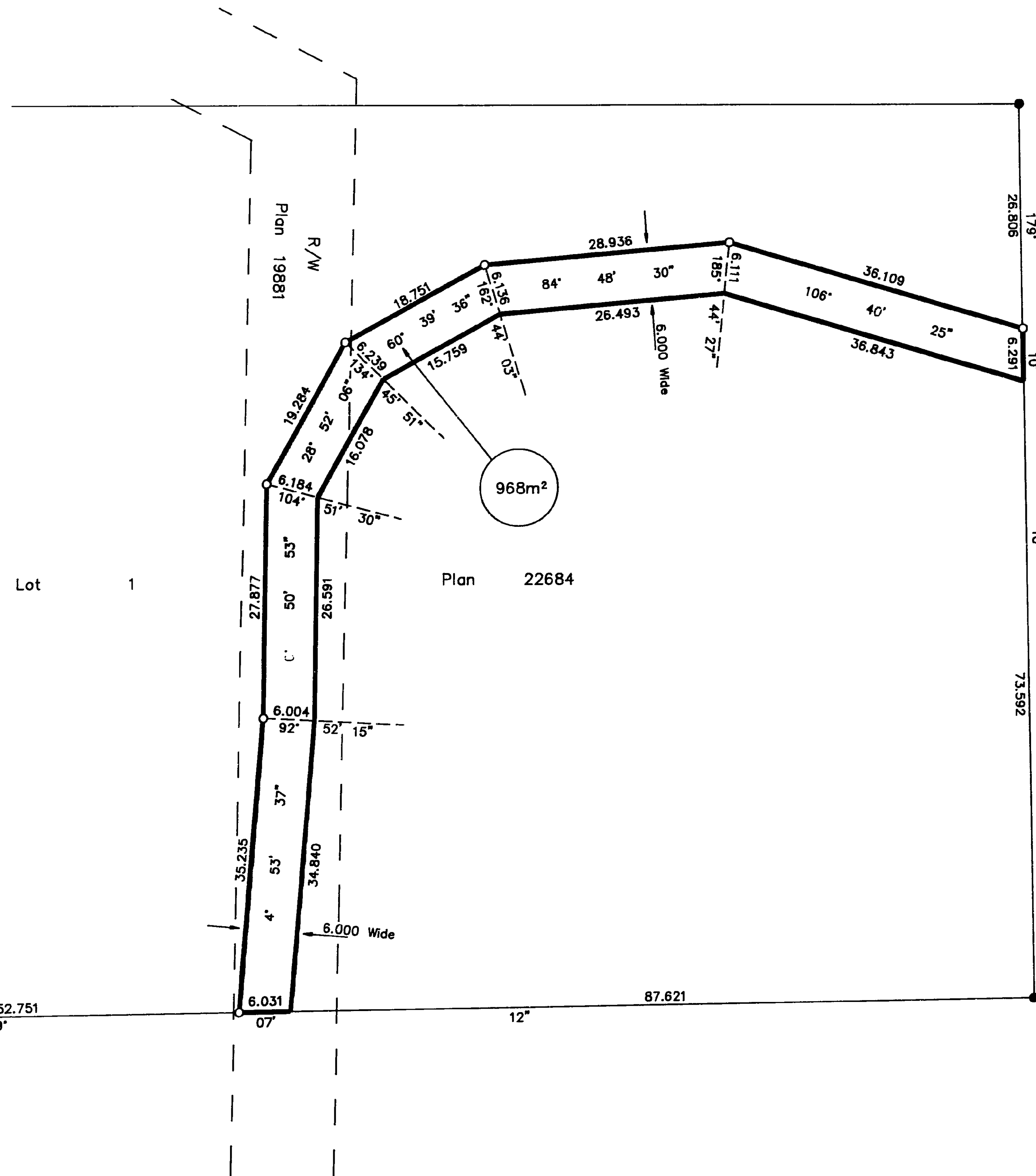


26-FF-226

PLAN NO. PGP35670

Deposited in the Land Title Office at Prince George this 07 day of OCT. 1991.

W.G. GANDY
REGISTRAR *per: a*



REFERENCE PLAN OF RIGHT OF WAY
WITHIN LOT 1, PLAN 22684, DISTRICT
LOT 935, CARIBOO DISTRICT. (B.C.G.S.
93G.097)

Scale: 1 : 500 (Distances are in metres)



Bearings are astronomic, derived from
Plan 22684

LEGEND

- Standard Iron Post Found
- Standard Iron Post Placed

I, Dale L. Keown, a British Columbia Land Surveyor of
Prince George in British Columbia, certify that I was
present at and personally superintended the survey
represented by this plan and that the survey and plan
are correct. The survey was completed on the 24th day
of September, 1991.

Dale L. Keown
Dale L. Keown, B.C.L.S.

This plan lies within the Fraser-Fort
George Regional District.

KILBRIDE SURVEYS British Columbia Land Surveyors Prince George, B.C. Ph: (604) 562-1196 Fax: 562-3656		
F.B.- RA	D.L.- 935	REF. NO.- 91710