

26-FF-226

REFERENCE PLAN OF STORM SEWER EASEMENT WITHIN LOTS A, B & C, PLAN PGP35522, DISTRICT LOT 343, CARIBOO DISTRICT.

B.C.G.S. 93G.097

PLAN NO. PGP35526

Deposited in the Land Title Office at Prince
George this 19 day of July 1991.

W.D. Handy /lwk
REGISTRAR

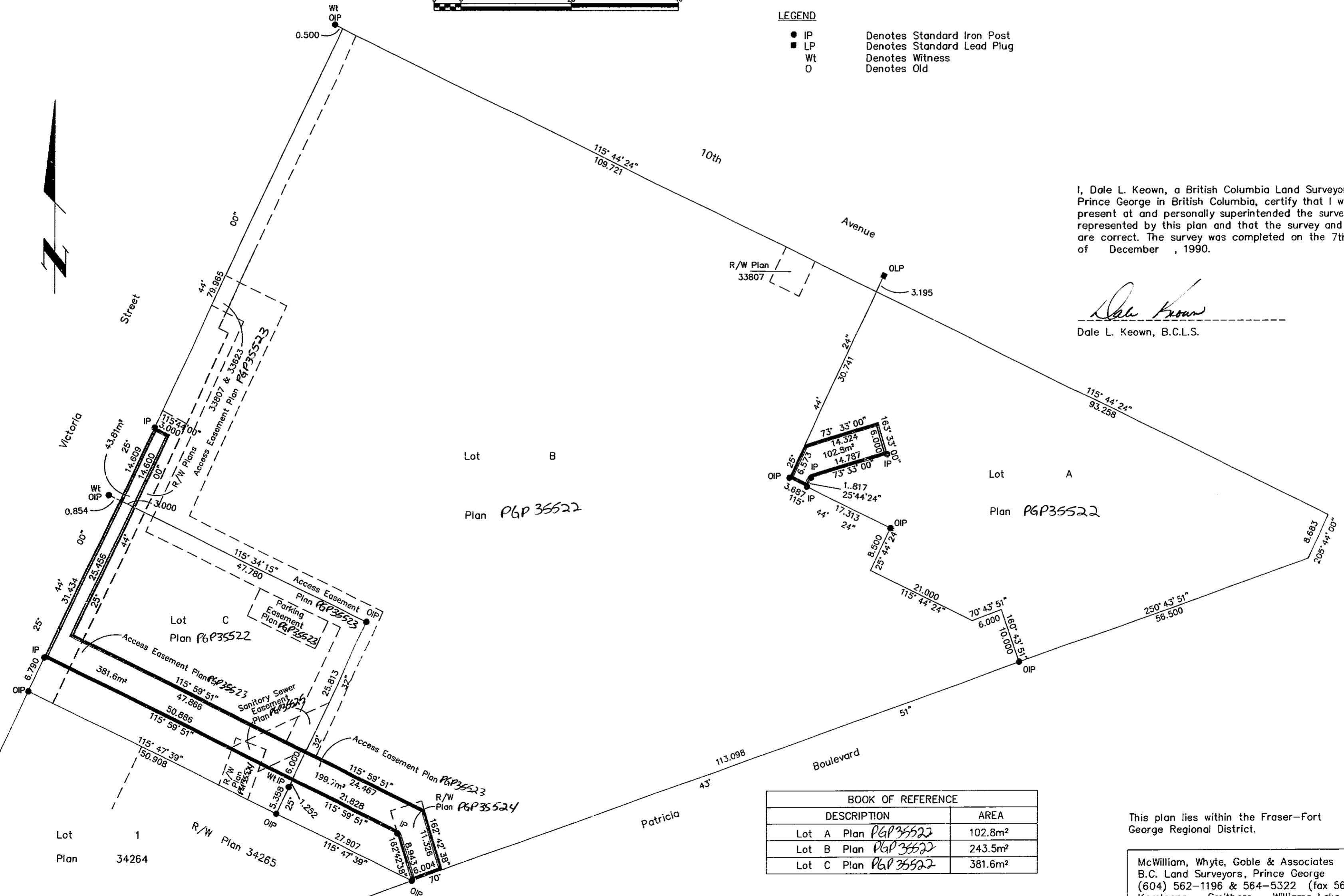
Scale: 1 : 500 (Distances are in metres)



Bearings are astronomic, derived from
Plan 33622

LEGEND

- IP Denotes Standard Iron Post
- LP Denotes Standard Lead Plug
- Wt Denotes Witness
- Denotes Old



I, Dale L. Keown, a British Columbia Land Surveyor of
Prince George in British Columbia, certify that I was
present at and personally supervised the survey
represented by this plan and that the survey and plan
are correct. The survey was completed on the 7th day
of December, 1990.

Dale Keown
Dale L. Keown, B.C.L.S.

BOOK OF REFERENCE	
DESCRIPTION	AREA
Lot A Plan PGP35522	102.8m²
Lot B Plan PGP35522	243.5m²
Lot C Plan PGP35522	381.6m²

This plan lies within the Fraser-Fort
George Regional District.

McWilliam, Whyte, Goble & Associates
B.C. Land Surveyors, Prince George
(604) 562-1196 & 564-5322 (fax 562-3656)
Kamloops - Smithers - Williams Lake