

# 26-FF-226

PLAN NO. PGP35525

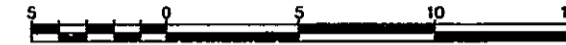
Deposited in the Land Title Office at Prince George this 19 day of July 1991.

REGISTRAR *W. D. Hardy*

REFERENCE PLAN OF SANITARY SEWER EASEMENT WITHIN LOT C, PLAN PGP35522 DISTRICT LOT 343, CARIBOO DISTRICT.

B.C.G.S. 93G.097

Scale: 1 : 250 (Distances are in metres)

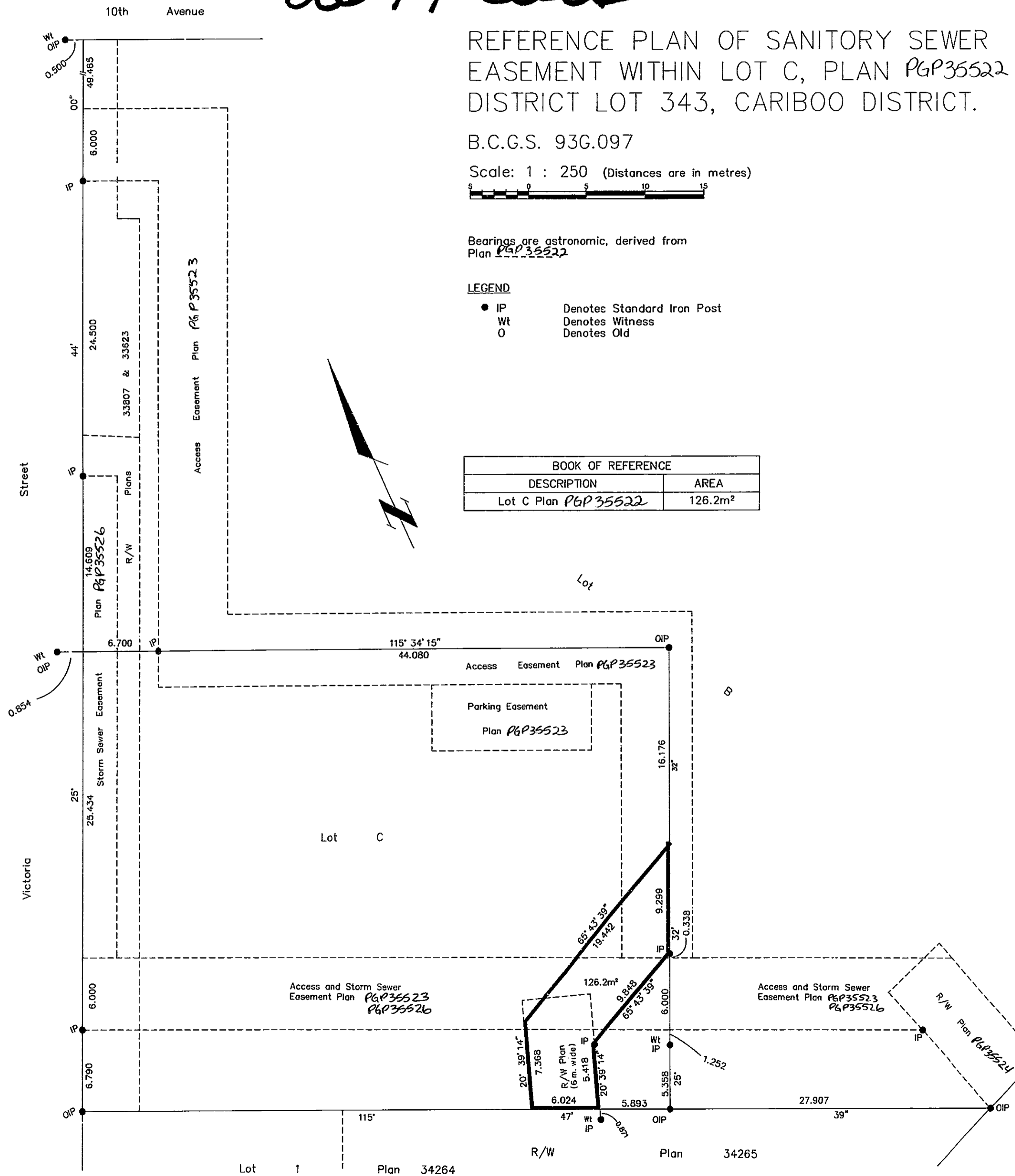


Bearings are astronomic, derived from Plan PGP35522

**LEGEND**

- IP Denotes Standard Iron Post
- Wt Denotes Witness
- O Denotes Old

BOOK OF REFERENCE	
DESCRIPTION	AREA
Lot C Plan PGP35522	126.2m <sup>2</sup>



I, Dale L. Keown, a British Columbia Land Surveyor of Prince George in British Columbia, certify that I was present at and personally superintended the survey represented by this plan and that the survey and plan are correct. The survey was completed on the 7th day of December, 1990.

*Dale Keown*  
Dale L. Keown, B.C.L.S.

This plan lies within the Fraser-Fort George Regional District.

McWilliam, Whyte, Goble & Associates  
B.C. Land Surveyors, Prince George  
(604) 562-1196 & 564-5322 (fax 562-3656)  
Kamloops - Smithers - Williams Lake

F.B.- RA    D.L.- 343    REF. NO.- 90719SS