

26-FF-226

PLAN NO. PGP 35513
 Deposited in the Land Title Office
 at Prince George, B.C.
 this 27th day of July 1991
 "W. J. Gandy" / Clerk
 Registrar

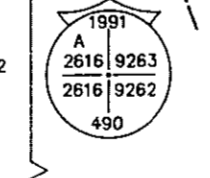
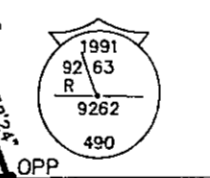
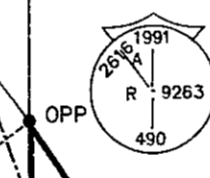
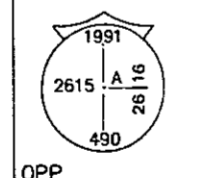
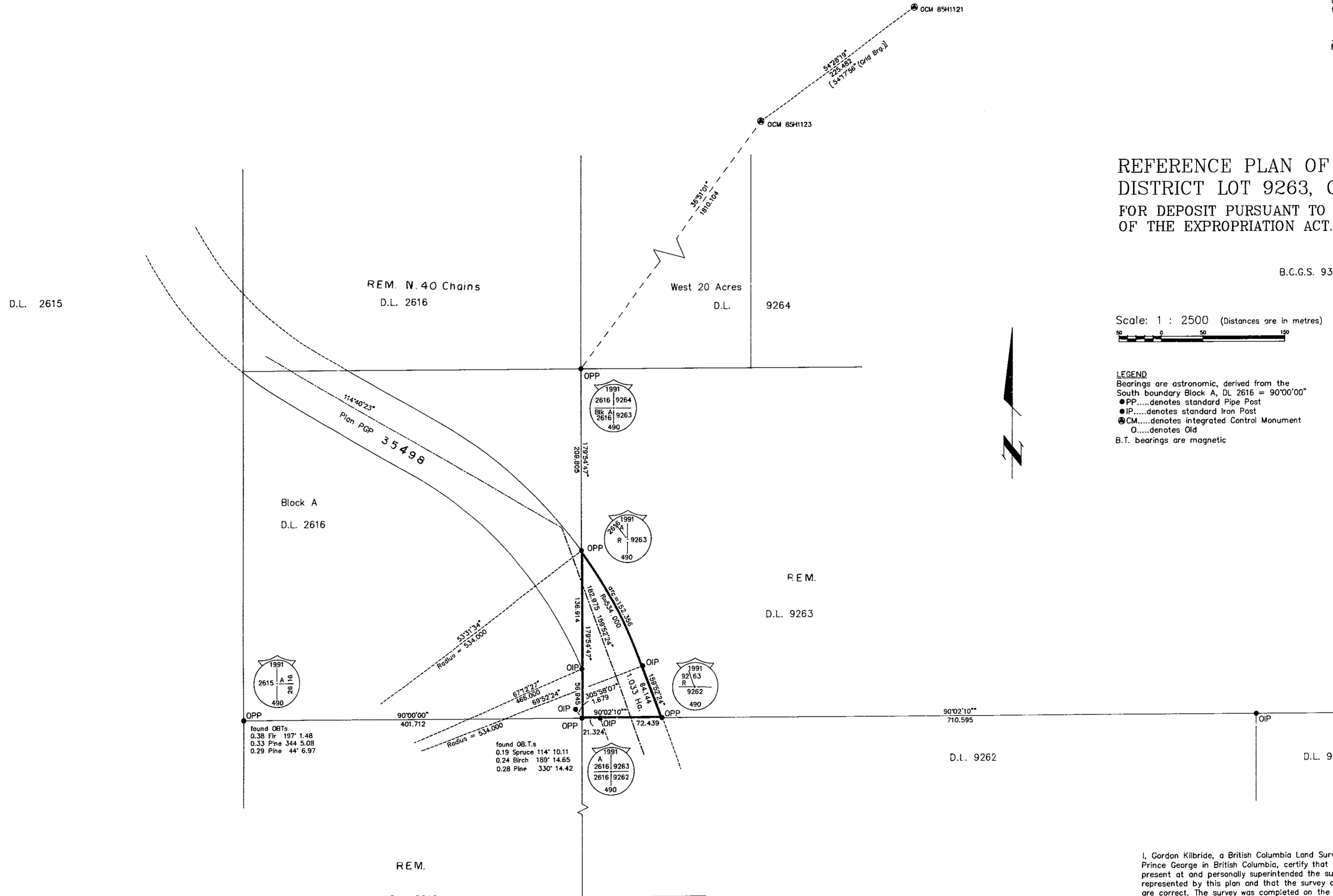
REFERENCE PLAN OF PART OF
 DISTRICT LOT 9263, CARIBOO DISTRICT.
 FOR DEPOSIT PURSUANT TO SECTION 6
 OF THE EXPROPRIATION ACT.

B.C.G.S. 93G.086

Scale: 1 : 2500 (Distances are in metres)



LEGEND
 Bearings are astronomic, derived from the
 South boundary Block A, DL 2616 = 90°00'00"
 ●PP.....denotes standard Pipe Post
 ●IP.....denotes standard Iron Post
 ●CM.....denotes integrated Control Monument
 O.....denotes Old
 B.T. bearings are magnetic



found OB.T.s
 0.38 Fir 157' 1.48
 0.33 Pine 344 5.08
 0.29 Pine 44' 6.97

found OB.T.s
 0.19 Spruce 114' 10.11
 0.24 Birch 189' 14.65
 0.28 Pine 330' 14.42

Book of Reference	
Lot	Area
D.L. 9263	1.033 Ha.

I, Gordon Kilbride, a British Columbia Land Surveyor of
 Prince George in British Columbia, certify that I was
 present at and personally superintended the survey
 represented by this plan and that the survey and plan
 are correct. The survey was completed on the 24 day
 of June, 1991.

Gordon Kilbride
 Gordon Kilbride, B.C.L.S.

This plan lies within the Fraser Fort
 George Regional District.

KILBRIDE SURVEYS
 British Columbia Land Surveyors
 Prince George, B.C.
 Ph: (604) 562-1196 Fax: 562-3656
 F.B.- SU 23 D.L.- 9263 REF. NO.- 91388