

REFERENCE PLAN OF
 STATUTORY RIGHT-OF-WAY
 IN S.W. 1/4 OF DISTRICT LOT 4028,
 CARIBOO DISTRICT.

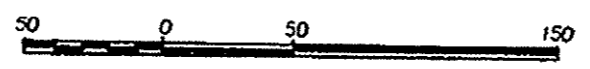
PLAN NO. PGP35439

Deposited in the Land Title Office at Prince
 George this 26 day of June 1997

W. J. Gandy Clerk
 Registrar

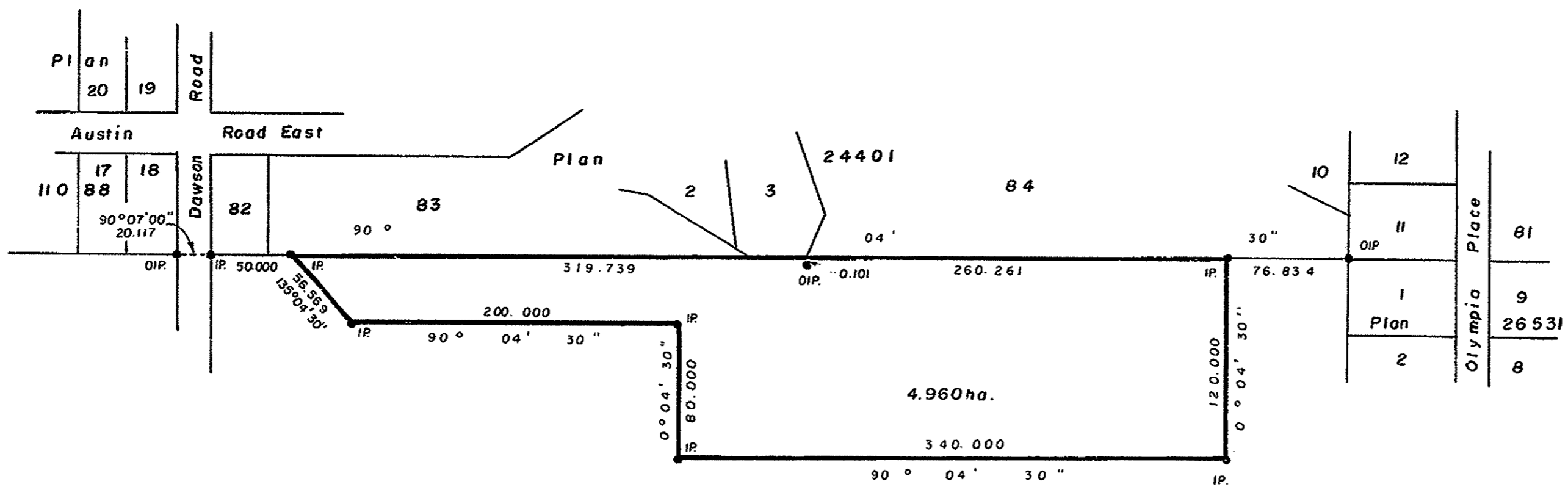
B.C.G.S. 936.097

SCALE: 1: 2500 (Distances are in metres)



Bearings are astronomic derived from
 Plan 24401.

- IP.....Standard Iron Post.
-Denotes old.



S. W. 1 / 4
 D. L. 4028

I, G. Kilbride a British Columbia Land Surveyor, of
 Prince George in British Columbia, certify that I was
 present at and personally superintended the survey
 represented by this plan and that the survey and plan are
 correct. The survey was completed on the 2 day
 of March, 1990.

Gordon Kilbride
 G. Kilbride, B.C.L.S.

Book of Reference	
Description	Area
S.W. 1/4 D. L. 4028	4.960ha.

This plan lies within the Fraser Fort George
 Regional District.

McWilliam, Whyte, Goble & Associates,
 B.C. Land Surveyors,
 Prince George (604) 562-1196,
 Kamloops - Smithers - Williams Lake

REF. NO. 89806 - 2 RQ 52