

PLAN NO. PGP 35434

Deposited in the Land Title Office of Prince George this 24th day of June, 1991.

W. L. Standy
Registrar

REFERENCE PLAN OF FOREST SERVICE ROAD WITHIN DISTRICT LOTS 2011, 2012, 2013 AND 2015, CARIBOO DISTRICT. (FOR DEPOSIT UNDER SECTION 107 OF THE LAND TITLE ACT.)

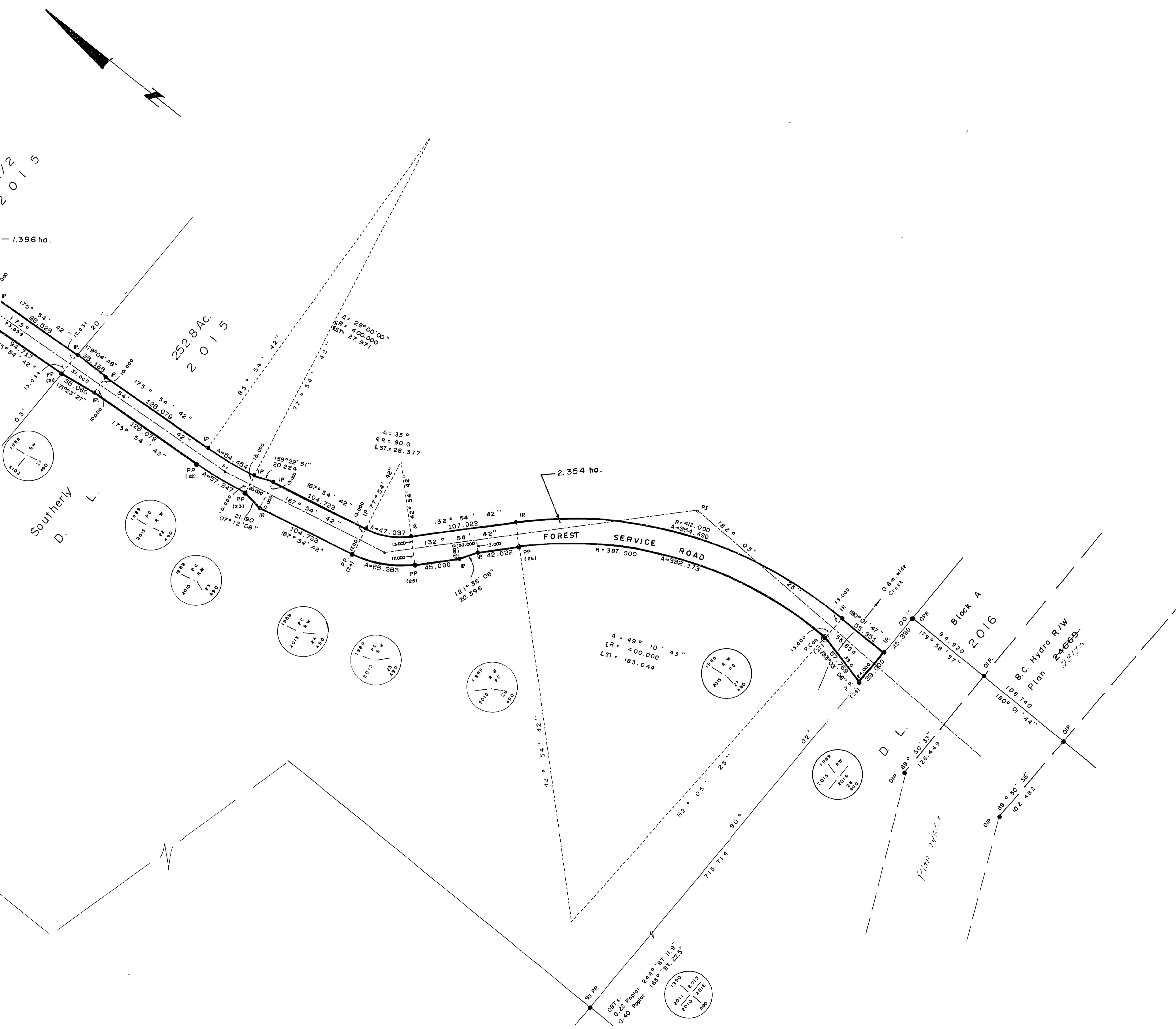
B.C.G.S. 93 G.087

Scale: 1:2000 (All distances are in metres)



Bearings are astronomic derived from stellar observation and referred to the meridian through the N.W. Corner of Block A, D.L. 2016.

- IP.....Standard Iron Post.
- PR.....Standard Pipe Post.
-Denotes 'old'
- Con.....Standard Post in Concrete.
- WT.....Denotes witness.



APPROVAL AS TO DEDICATION OF ROAD
BRITISH COLUMBIA HYDRO AND POWER AUTHORITY
OWNERS OF CHARGE NO. C7471
BY ITS ATTORNEYS IN FACT (D.F. NO. PBL0097)
Hajime Hideo
Name: Hajime Hideo
Witness (As to Attorneys in Fact)
Nancy Akemi Madellon
Name: Nancy Akemi Madellon
Address: 910 Burrard St - 1st Floor, Vancouver, BC V6Z 1Y3
Occupation: Legal Services Clerk

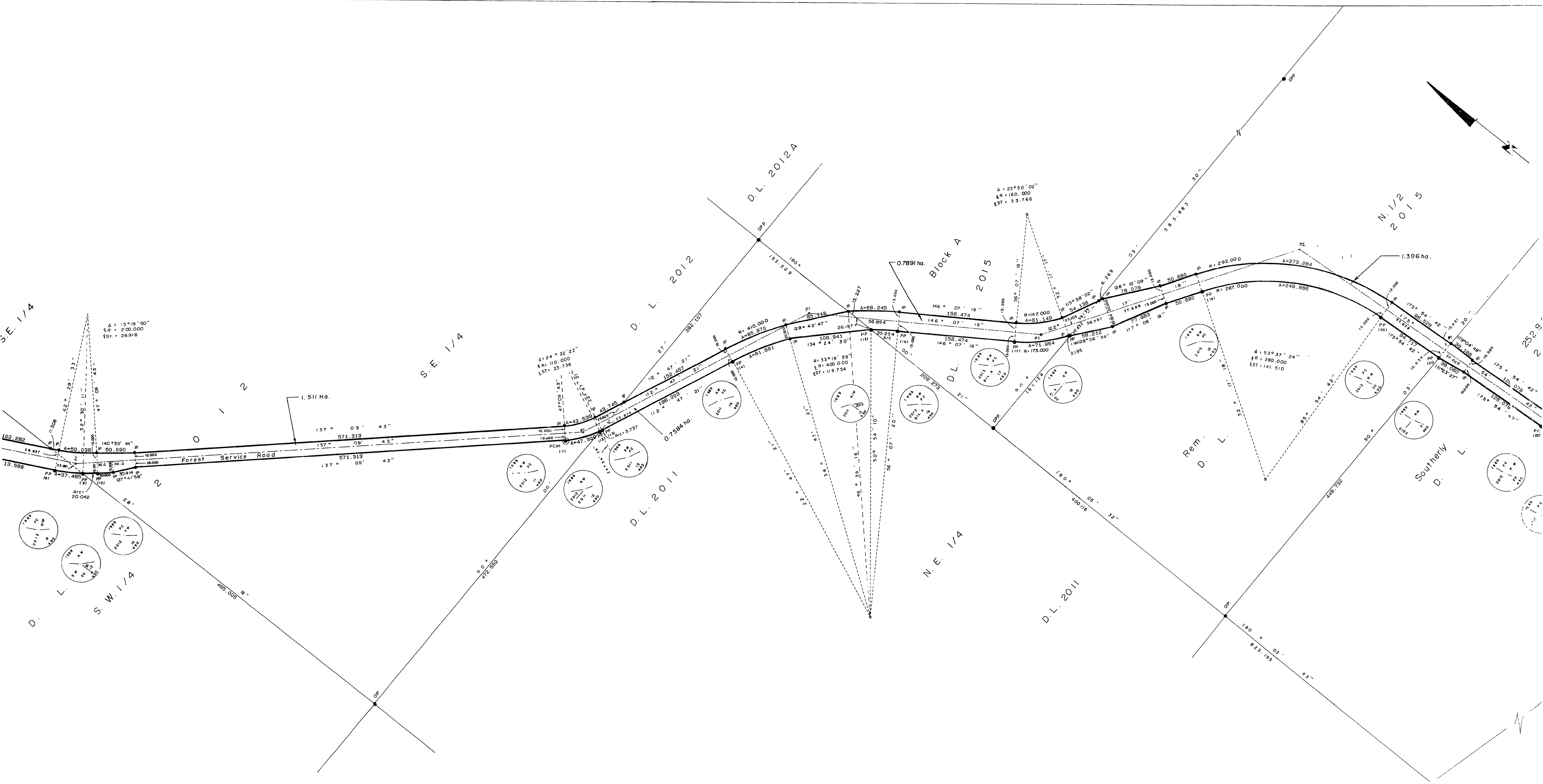
I, G. Kilbride, a British Columbia Land Surveyor of Prince George in British Columbia, certify that I was present at and personally superintended the survey represented by this plan, and that the survey and plan are correct. The survey was completed on the 25 day of January, 1990.
Gordon Kilbride
G. Kilbride, B.C.L.S.

Book of Reference	
Description	Area
S. 252.8 Ac. of D.L. 2015	2.352 ha.
Rem. N. 1/2 D.L. 2015	1.396 ha.
Blk. A D.L. 2015	0.7891 ha.
NE. 1/4 D.L. 2011	0.7584 ha.
S.E. 1/4 D.L. 2012	1.511 ha.
S.W. 1/4 D.L. 2012	0.7674 ha.
N.W. 1/4 D.L. 2012	2.023 ha.
Lot 7, P. 9902, D.L. 2013	0.4147 ha.
Unsurveyed portion of S. 252.8 Ac. of D.L. 2015 (being bed of creek)	24.4 sq. m.

The Roman Catholic Episcopal Corporation of Prince Rupert
J. E. Larkin
Authorized Signatory
Print Name: J. E. LARKIN
Witness: *[Signature]*
Print Name: C. Stimpert
Address: 825-2 St. John's Cres, Prince George, Postal Code V2N 4H9
Occupation: Bus. Mgr.

This plan lies within the Fraser Fort George Regional District.

The forest road through Crown Land shown hereon is established pursuant to Section 9(1) of the Ministry of Lands, Parks and Housing Act.
[Signature]
for the Ministry of Crown Lands
Victoria, B.C. January 31, 1991



S.E. 1/4

S.E. 1/4

D.L. 2012

D.L. 2012A

N.E. 1/4

D.L. 2011

N. 1/2 2015

Southerly D.L.

D.L.

S.W. 1/4

1.511 Ho.

Forest Service Road

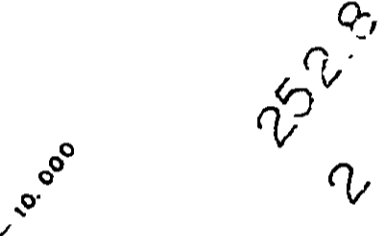
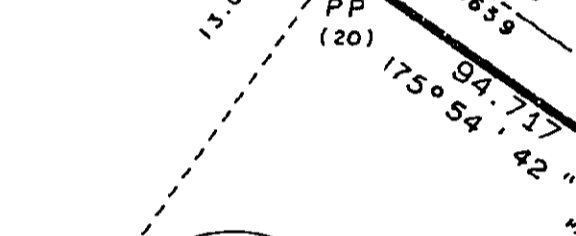
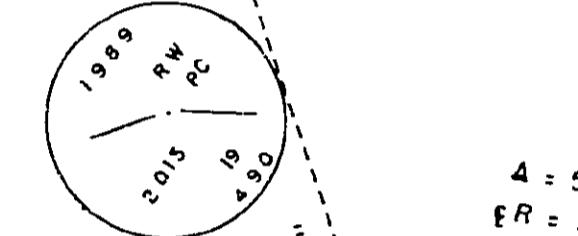
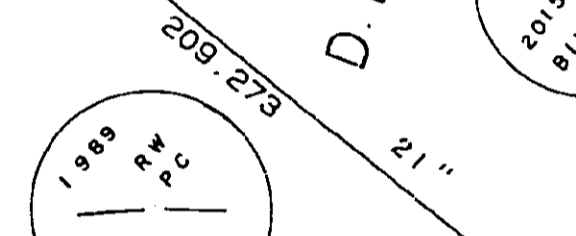
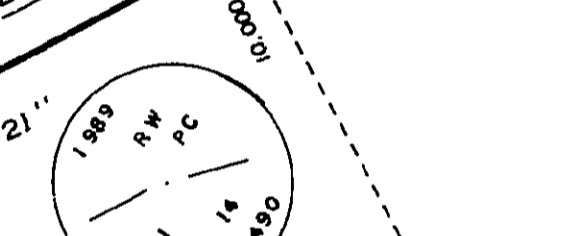
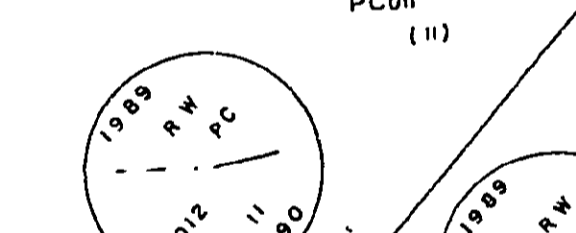
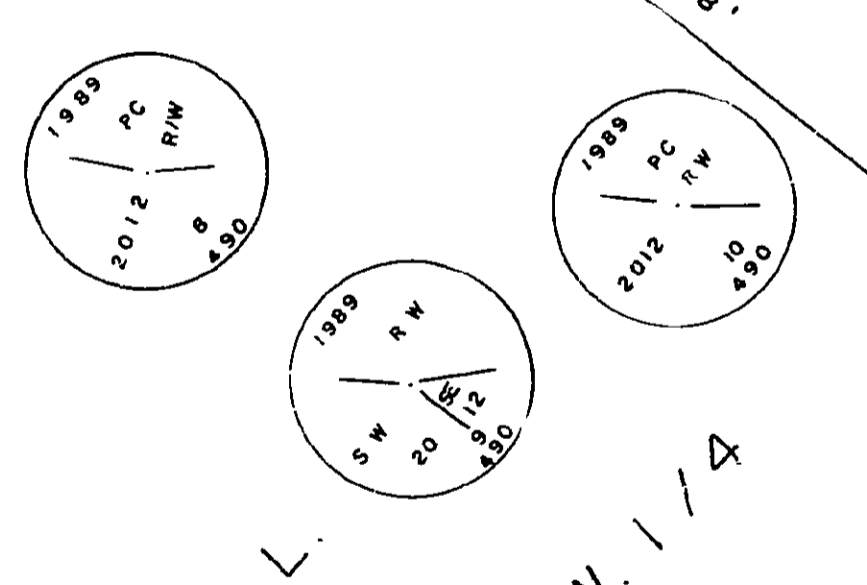
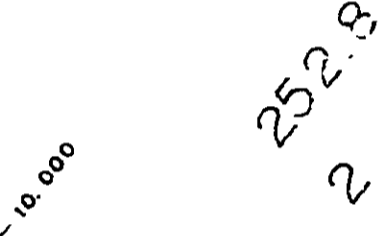
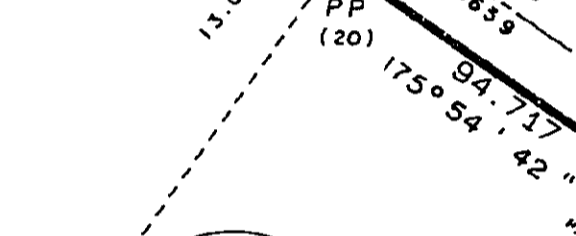
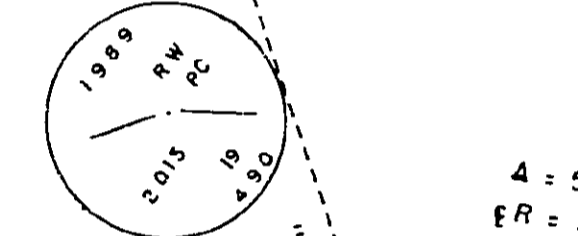
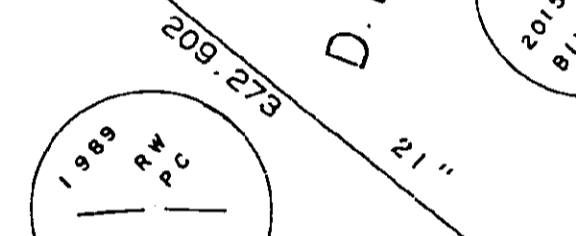
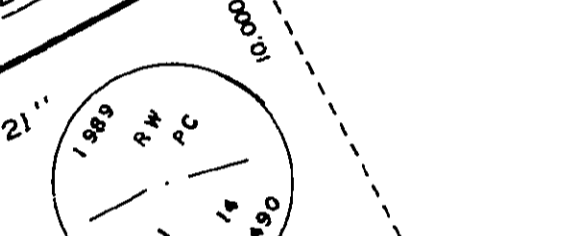
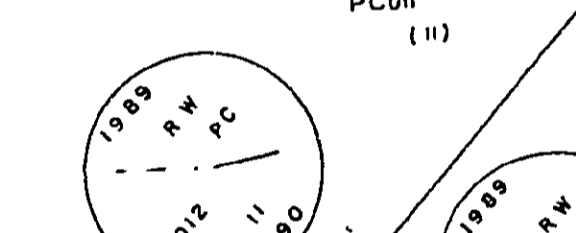
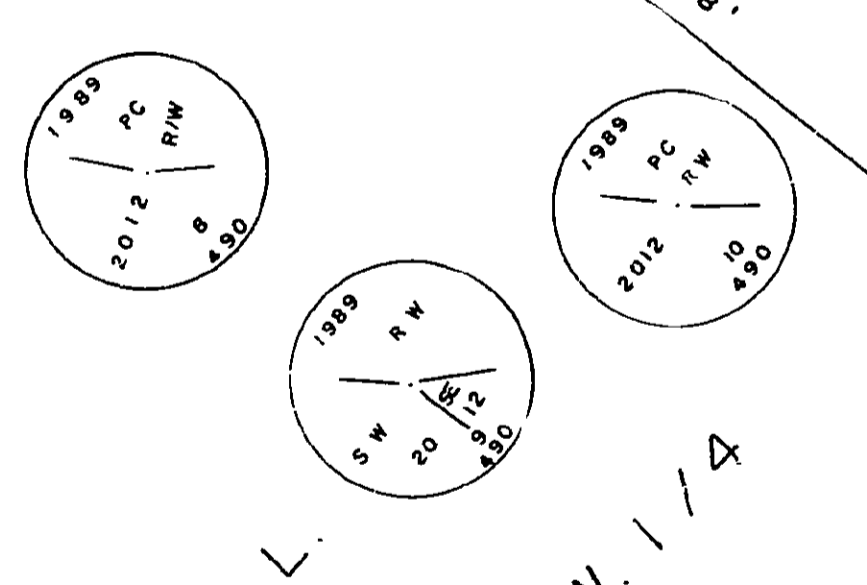
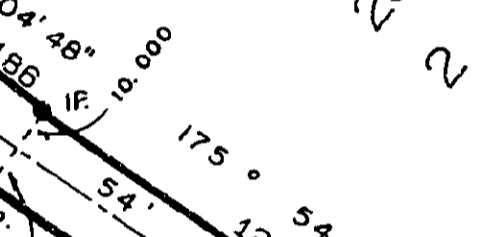
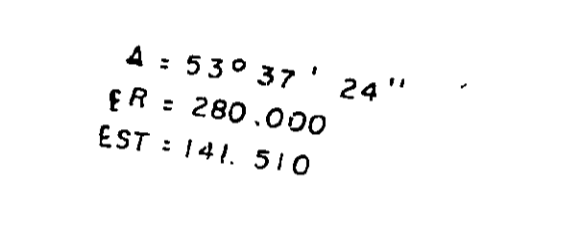
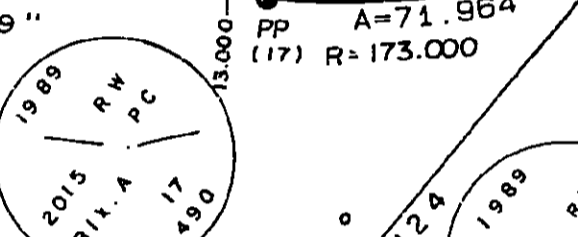
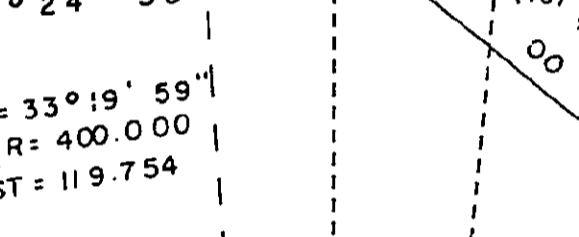
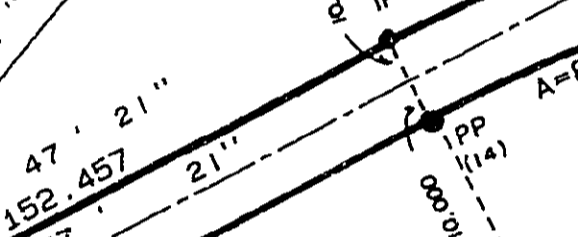
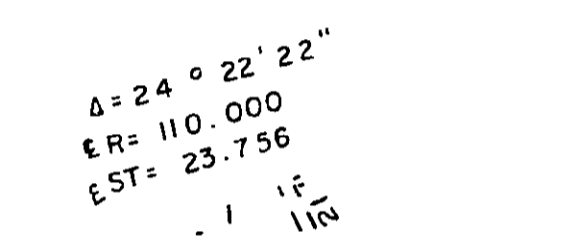
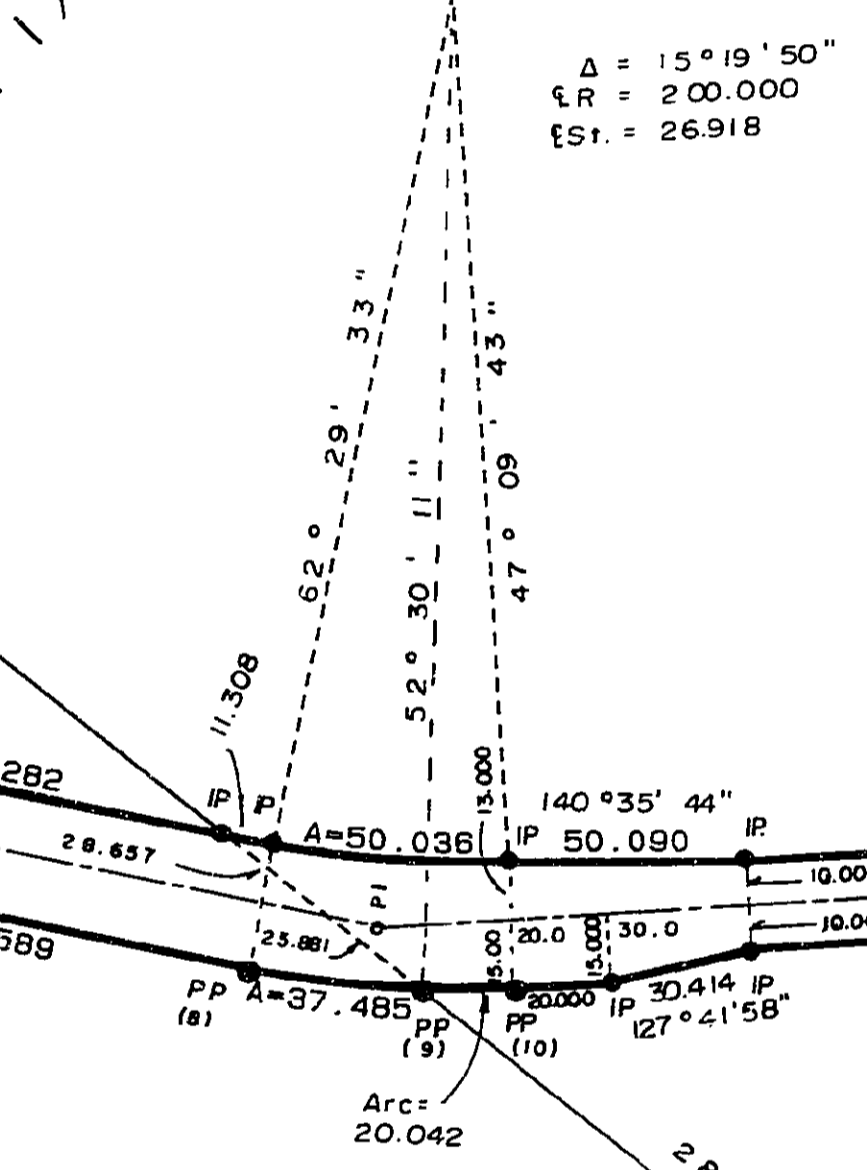
D.L. 2011

Block A

Rem. D.L.

S.E. 1/4

Southerly D.L.



26-FF

