

26-FF.226

REFERENCE PLAN OF
 STATUTORY RIGHT OF WAY
 OVER PART OF REM. OF
 NE 1/4 OF DL 4045,
 CARIBOO DISTRICT.

B.C.G.S. 93G.097

PLAN NO. PGP 35379

Deposited in the Land Title Office
 at Prince George, B.C.
 this 31st day of May 1991.

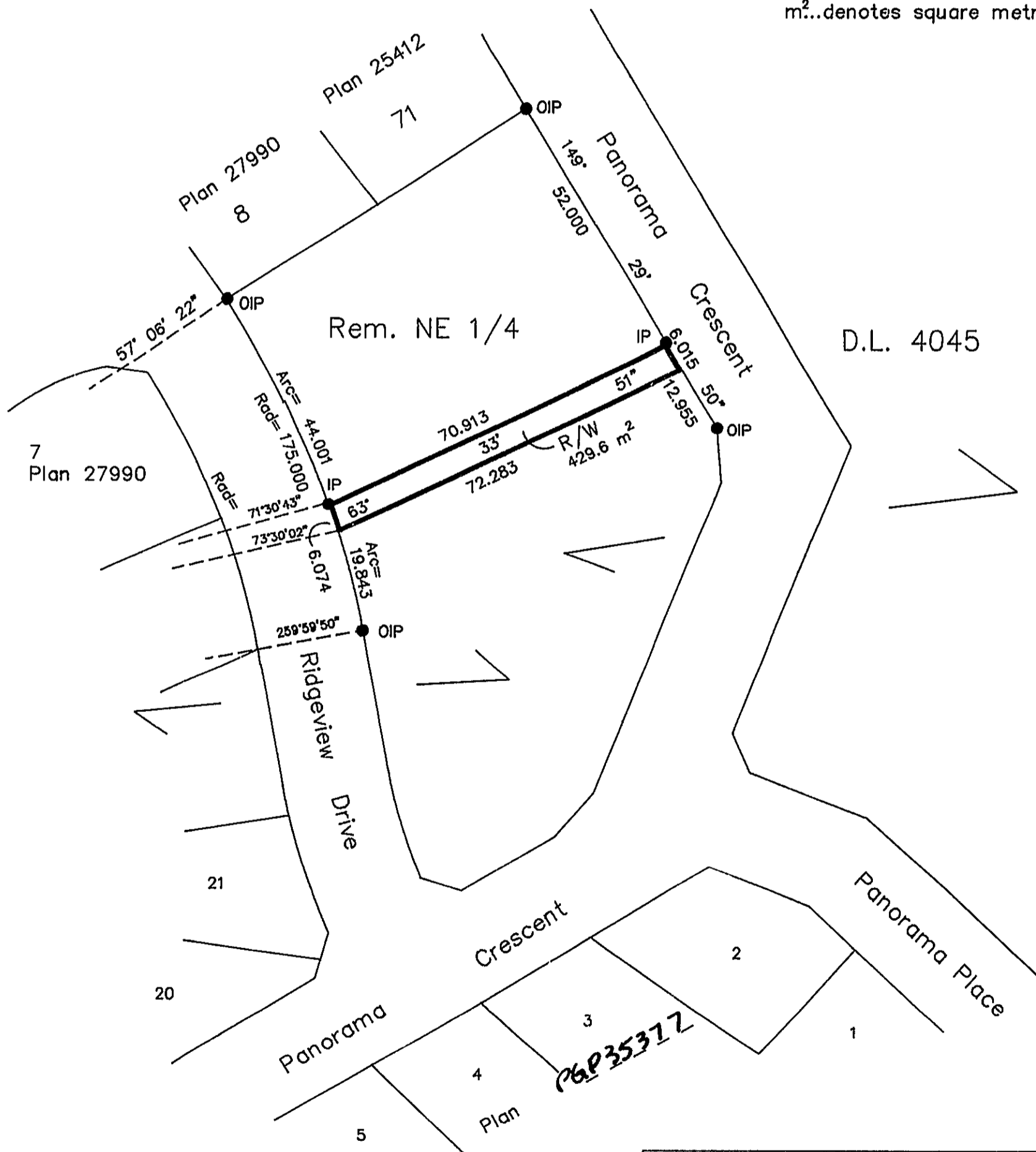
"W. G. Gandy" / lwk
 Registrar

Scale: 1 : 1000 (Distances are in metres)



LEGEND

Bearings are astronomic, derived
 from plan PGP35377
 ●IP....denotes standard iron post
 O....denotes Old
 m²...denotes square metres



I, Gordon Kilbride, a British Columbia Land Surveyor of Prince George in British Columbia, certify that I was present at and personally superintended the survey represented by this plan and that the survey and plan are correct. The survey was completed on the 23 day of May, 1990

Gordon Kilbride
 Gordon Kilbride, B.C.L.S.

BOOK OF REFERENCE	
DESCRIPTION	AREA
NE 1/4 DL 4045	429.6 m ²

This plan lies within the Fraser Fort George Regional District.

McWilliam, Whyte, Goble & Associates B.C. Land Surveyors, Prince George (604) 562-1196 & 564-5322 (fax 562-3656) Kamloops - Smithers - Williams Lake		
F.B.-	D.L.- 4045	REF. NO.- 90025D