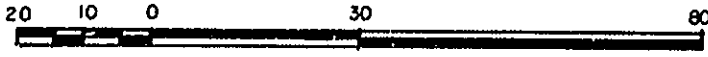


# 26-FF.226

REFERENCE PLAN OF  
 STATUTORY RIGHT OF WAY  
 OVER PART OF REM. OF  
 NE 1/4 OF DL 4045,  
 CARIBOO DISTRICT.

B.C.G.S. 93G.097

Scale : 1:1250 (Distances are in metres)



PGP35378

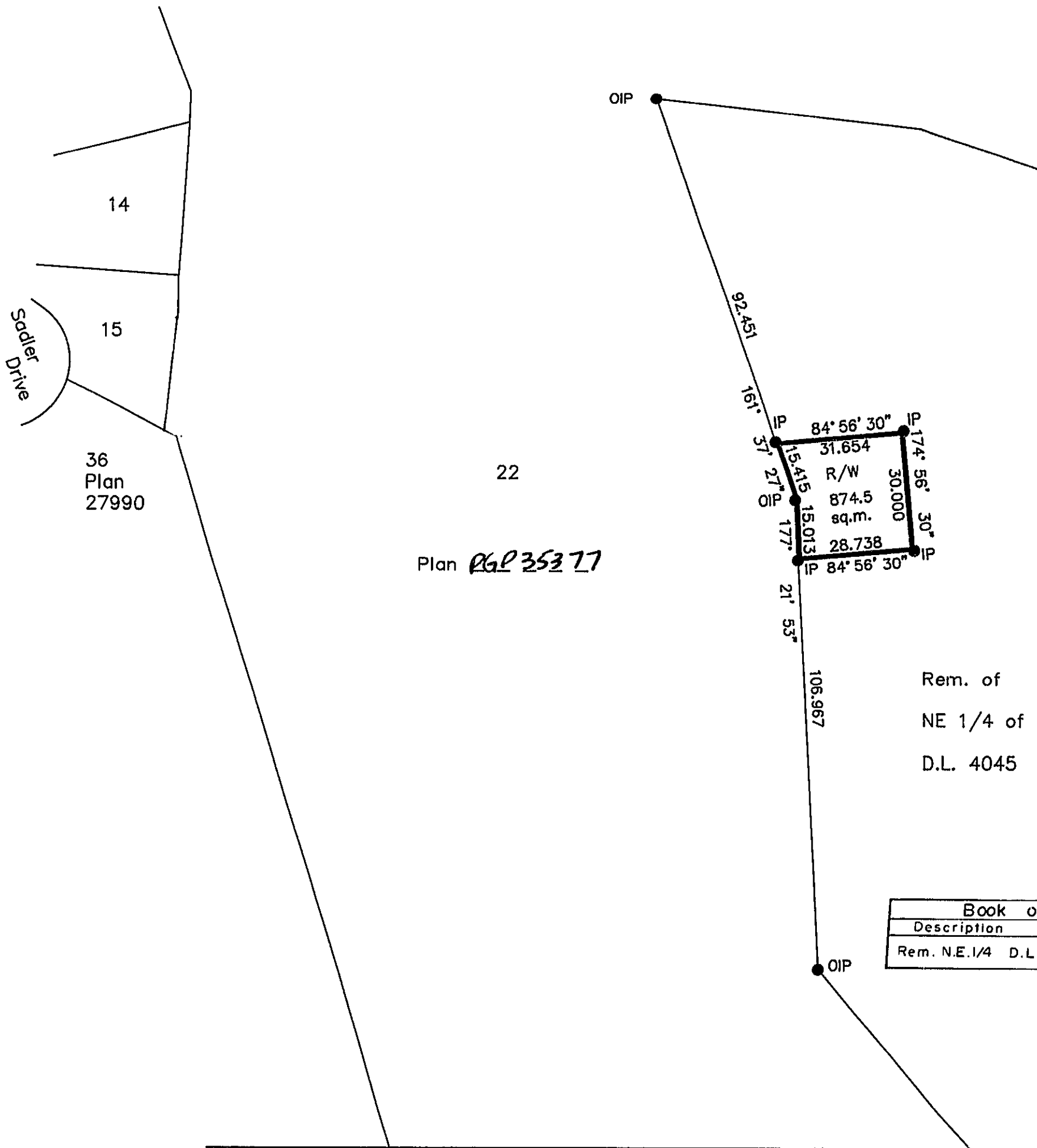
PLAN NO. \_\_\_\_\_

Deposited in the Land Title Office  
 at Prince George, B.C.  
 this 31 day of May 1991.

"W.D. Handy" / Jusk  
 Registrar

**LEGEND**

Bearings are astronomic, derived  
 from Plan **PGP35377**  
 ● IP...denotes standard Iron Post  
 O...denotes Old



Rem. of  
 NE 1/4 of  
 D.L. 4045

Book of Reference	
Description	Area
Rem. N.E.1/4 D.L. 4045	874.5 Ha.

SE 1/4 of D.L. 4045

I, Gordon Kilbride, a British Columbia Land Surveyor of Prince George in British Columbia, certify that I was present at and personally superintended the survey represented by this plan and that the survey and plan are correct. The survey was completed on the 17 day of September, 1990.

Gordon Kilbride  
 Gordon Kilbride, B.C.L.S.

This plan lies within the Fraser Fort  
 George Regional District.

McWilliam, Whyte, Goble & Associates B.C. Land Surveyors, Prince George (604) 562-1196 & 564-5322 (fax 562-3656) Kamloops - Smithers - Williams Lake		
F.B.- SC 38	D.L.- 4045	REF. NO.- 90025C