

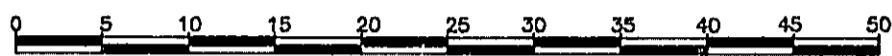
# 26-FF.226

PLAN No. PGP **35324**

REFERENCE PLAN OF EASEMENT THROUGH  
 LOT 5, PLAN 19732  
 DISTRICT LOT 2101  
 CARIBOO DISTRICT  
 SCALE 1 : 500 B.C.G.S. 93G.096

DEPOSITED IN THE LAND TITLE OFFICE  
 AT PRINCE GEORGE, B.C., THIS 3  
 DAY OF May, 1991.

REGISTRAR W/G Gandy *pr/R*



BEARINGS ARE ASTRONOMIC, DERIVED FROM THE WEST  
 BOUNDARY OF LOT 5, PLAN 19732, D.L. 2101.

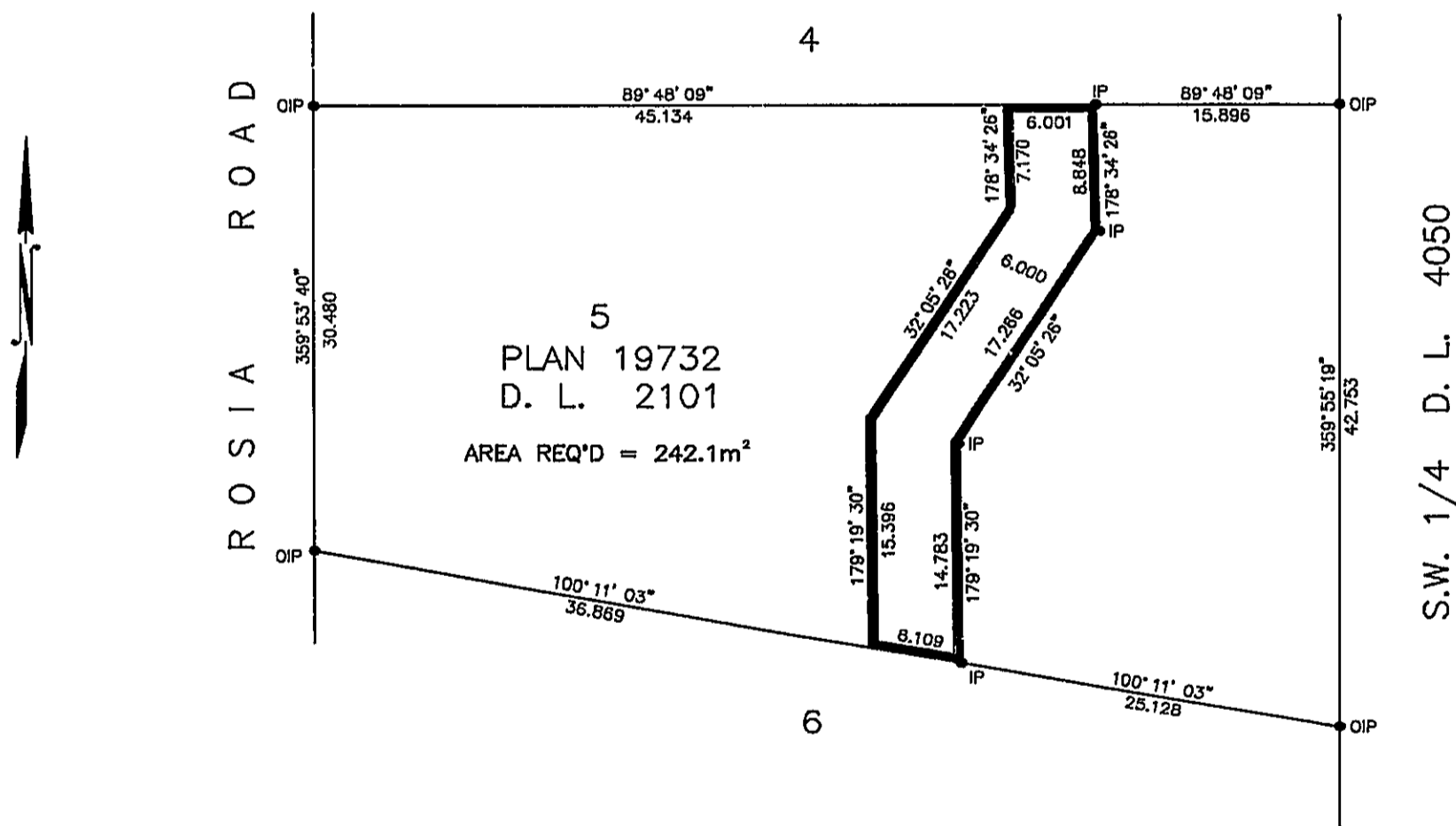
ALL DISTANCES ARE SHOWN IN METRES.

LEGEND

- OIP DENOTES AN OLD IRON PIN FOUND.
- IP DENOTES AN IRON PIN SET.

BOOK OF REFERENCE

DESCRIPTION	AREA REQUIRED
LOT 5, PLAN 19732, D.L. 2101	242.1 m <sup>2</sup>



I, RONALD L. JOHNS, A BRITISH COLUMBIA LAND SURVEYOR, OF PRINCE GEORGE, IN BRITISH COLUMBIA, CERTIFY THAT I WAS PRESENT AT AND PERSONALLY SUPERINTENDED THE SURVEY REPRESENTED BY THIS PLAN AND THAT THE SURVEY AND PLAN ARE CORRECT. THE SURVEY WAS COMPLETED ON THE 24TH DAY OF APRIL, 1991.

THIS PLAN LIES WITHIN THE FRASER-FORT GEORGE REGIONAL DISTRICT.

R.L. JOHNS, B.C.L.S.

R.L. JOHNS & ASSOCIATES  
 LEGAL AND ENGINEERING SURVEYS  
 P.O. BOX 824  
 PRINCE GEORGE, B.C. V2L 4V3  
 (604) 562-5759