

26-FF.226

PLAN NO. PGP35285

Deposited in the Land Title Office of Prince George this 15<sup>th</sup> day of April 1991

W. J. Handy  
Registrar

REM. S. 1/2  
D.L. 821A

DETAIL  
NO SCALE

PLAN 14924

REM. S1/2  
D.L. 821A

N.E. 1/4  
D.L. 818

D.L. 4037

N/W 1/4  
D.L. 818

DETAIL  
NO SCALE

REM. S. 1/2  
D.L. 821A

N.E. 1/4  
D.L. 818

S.E. 1/4 D.L. 818  
AREA REQD = 2.639 HA.

REM. D.L. 819

D.L. 4037

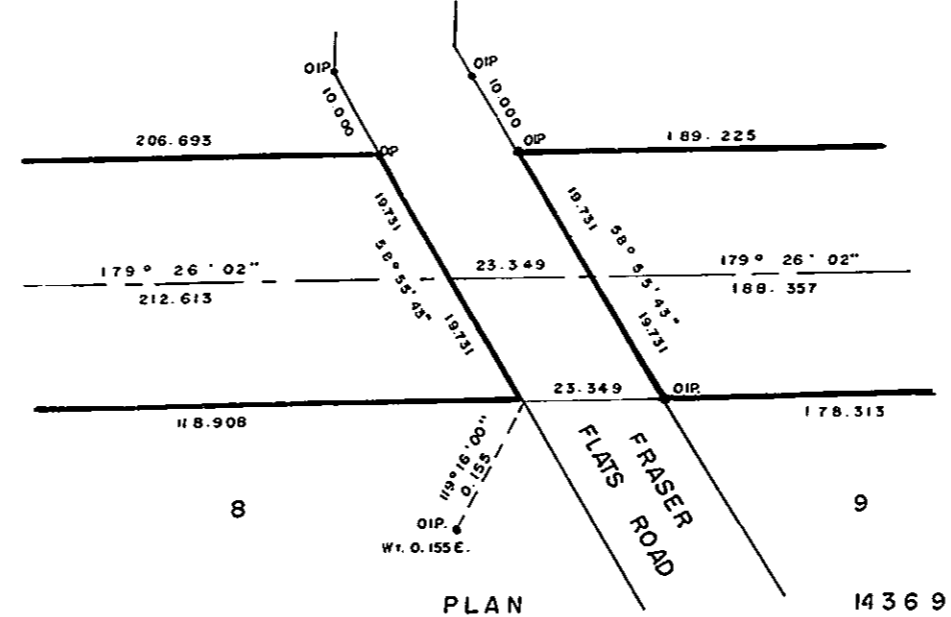
N.W. 1/4 D.L. 818

S.W. 1/4  
D.L. 818

NE 1/4 OF NW 1/4  
D.L. 819

DETAIL  
NO SCALE

S.E. 1/4 D.L. 818



BRITISH COLUMBIA HYDRO & POWER AUTHORITY  
PLAN OF STATUTORY RIGHT -OF-WAY  
(PURSUANT TO THE HYDRO AND POWER  
AUTHORITY ACT R.S.B.C. 1979, CHAPTER 188)  
THROUGH DISTRICT LOTS 818, 821A, 4026  
AND 4036, CARIBOO DISTRICT -  
BRITISH COLUMBIA. S.C.S. 936.097 a 93J. 007

SCALE : 1 : 2500



Bearings are astronomic derived from  
R/W Plan 29862.

- IP Standard Iron Post.
- PP Standard Pipe Post.
- CIP Capped Iron Post
- PCon Standard Post in Concrete
- Denotes old
- WI Denotes witness.
- B.T. Bearing Trees

B.T. bearings are magnetic.  
All distances are in metres.

BOOK OF REFERENCE	
Description	Area
S.E. 1/4 D.L. 818	2.639ha.
S. 1/2 OF NW 1/2 OF D.L. 821A	1.358ha.
S.E. 1/4 D.L. 4026	0.8534ha.
E. 1/2 OF SW 1/4 OF D.L. 4026	1.627ha.
W. 1/2 OF SW 1/4 OF D.L. 4026	1.630ha.
S. 1/2 OF D.L. 4036	0.3796ha.

I, G. Kilbride, a British Columbia Land Surveyor, of Prince George in British Columbia, certify that I was present at and personally superintended the survey represented by this plan and that the survey and plan are correct. The survey was completed on the 1st day of December, 1989.

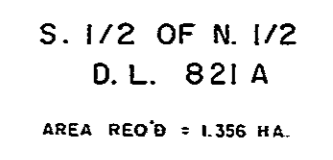
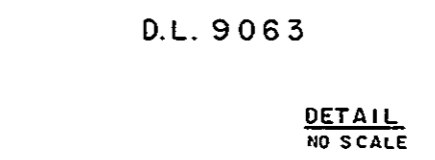
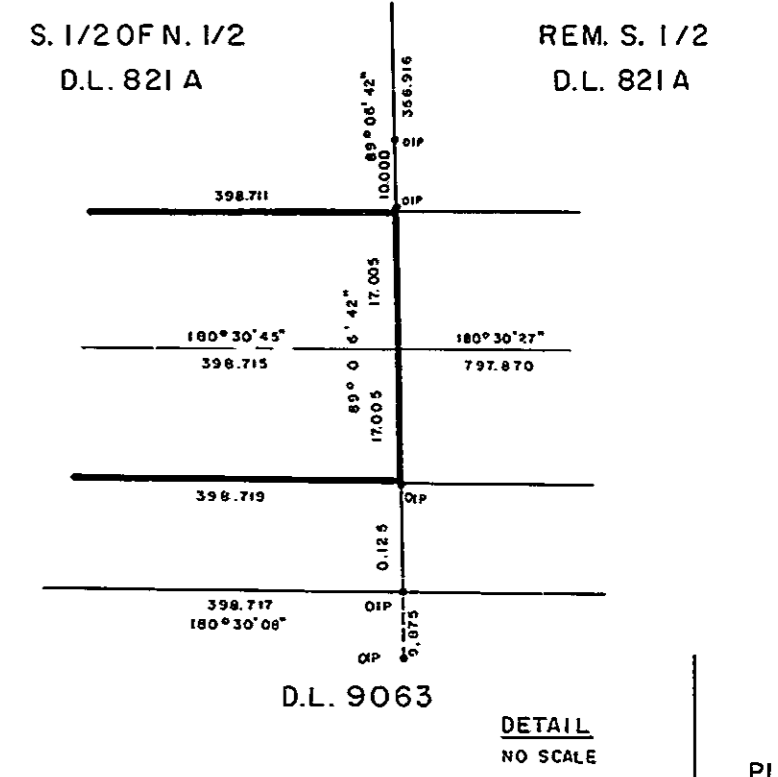
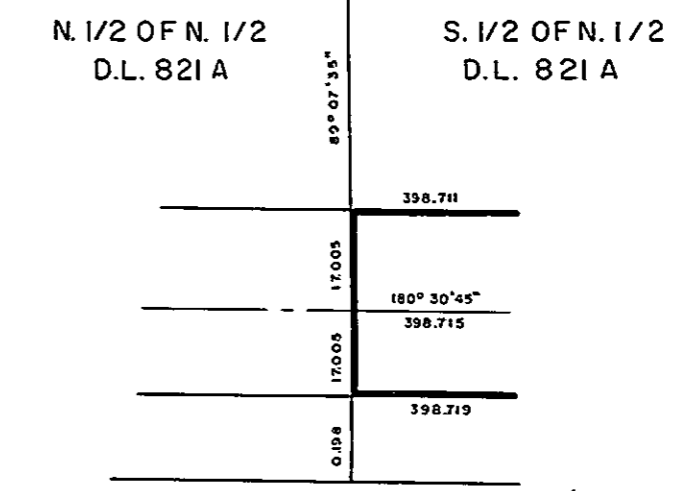
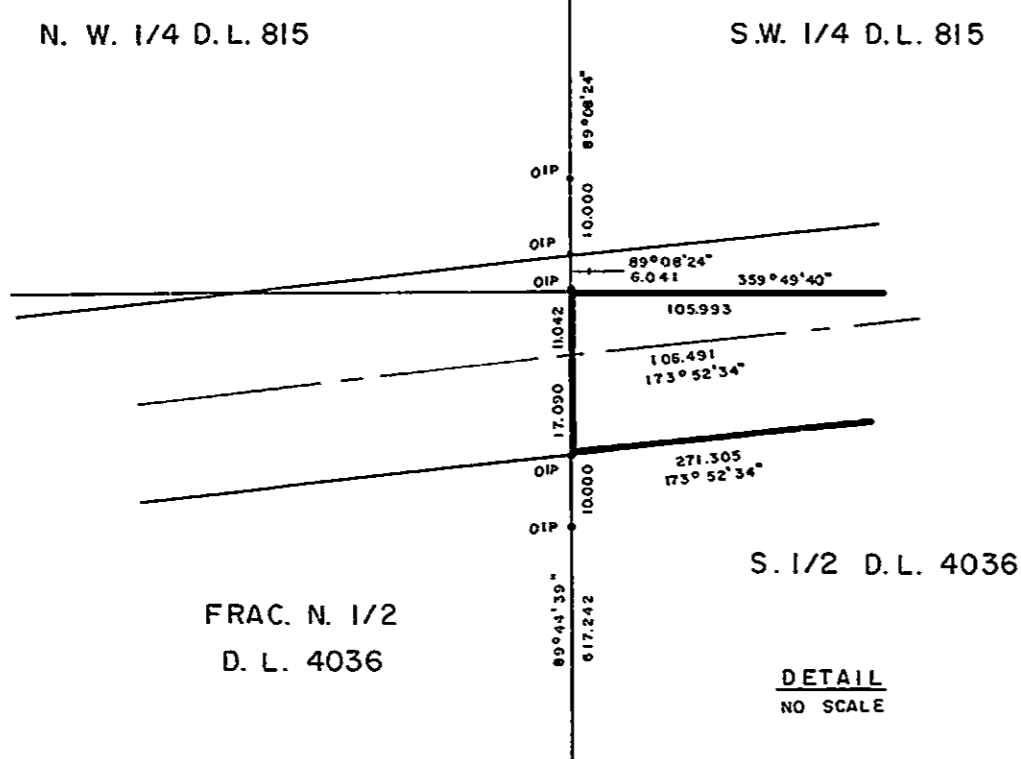
G. Kilbride  
G. Kilbride, B.C.L.S.

I hereby certify that this is a true copy of the Official Plan on deposit with the Surveyor General, Ministry of Crown Lands, and numbered Plan 4 Type 1493  
Deputy Surveyor General  
Victoria, B.C. March 28, 1991.

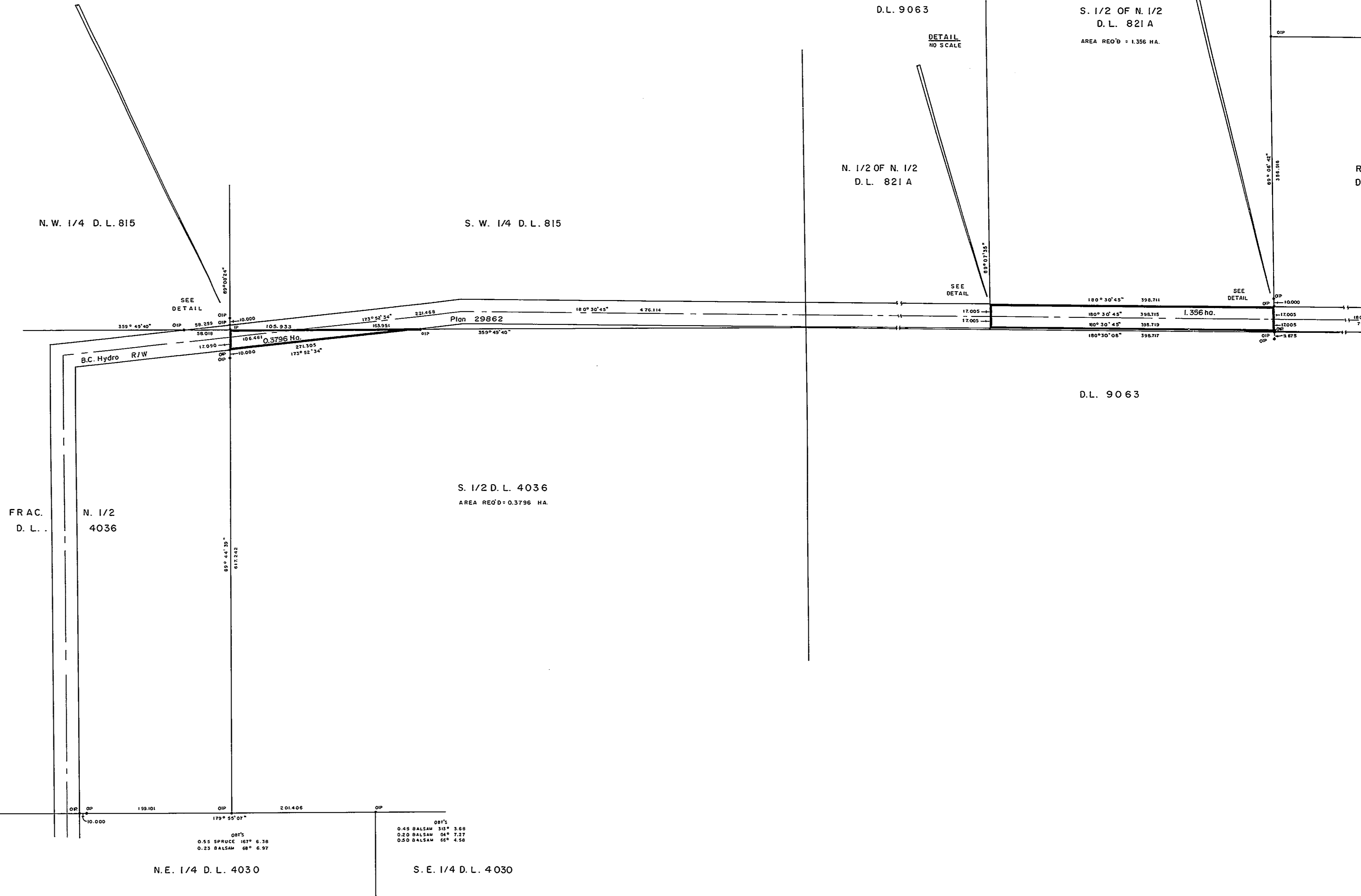
This plan lies within the Fraser Fort George Regional District.

McWilliam Whyte Goble & Associates  
B.C. Land Surveyors,  
Prince George (604) 562-1196  
Kamloops - Smithers - Williams Lake - Salmon Arm

REF. NO. 13871 PF, PL, RW 39



PLAN 14924



N.E. 1/4 D.L. 4030

S.E. 1/4 D.L. 4030

0.51 SPRUCE 107' 6.38  
 0.25 BALSAM 88' 6.97

0.45 BALSAM 315' 3.68  
 0.20 BALSAM 56' 7.57  
 0.20 BALSAM 151' 6.58



