

26-FF-226

PLAN NO. PGP35232

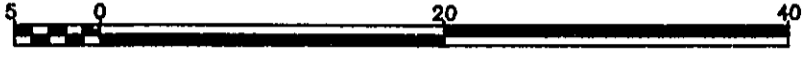
REFERENCE PLAN OF STATUTORY
RIGHT OF WAY IN LOTS A AND B,
PLAN PGP35231, DISTRICT LOT 753,
CARIBOO DISTRICT.

Deposited in the Land Title Office
at Prince George, B.C.
this 20 day of March, 1991.

B.C.G.S. 93G.087

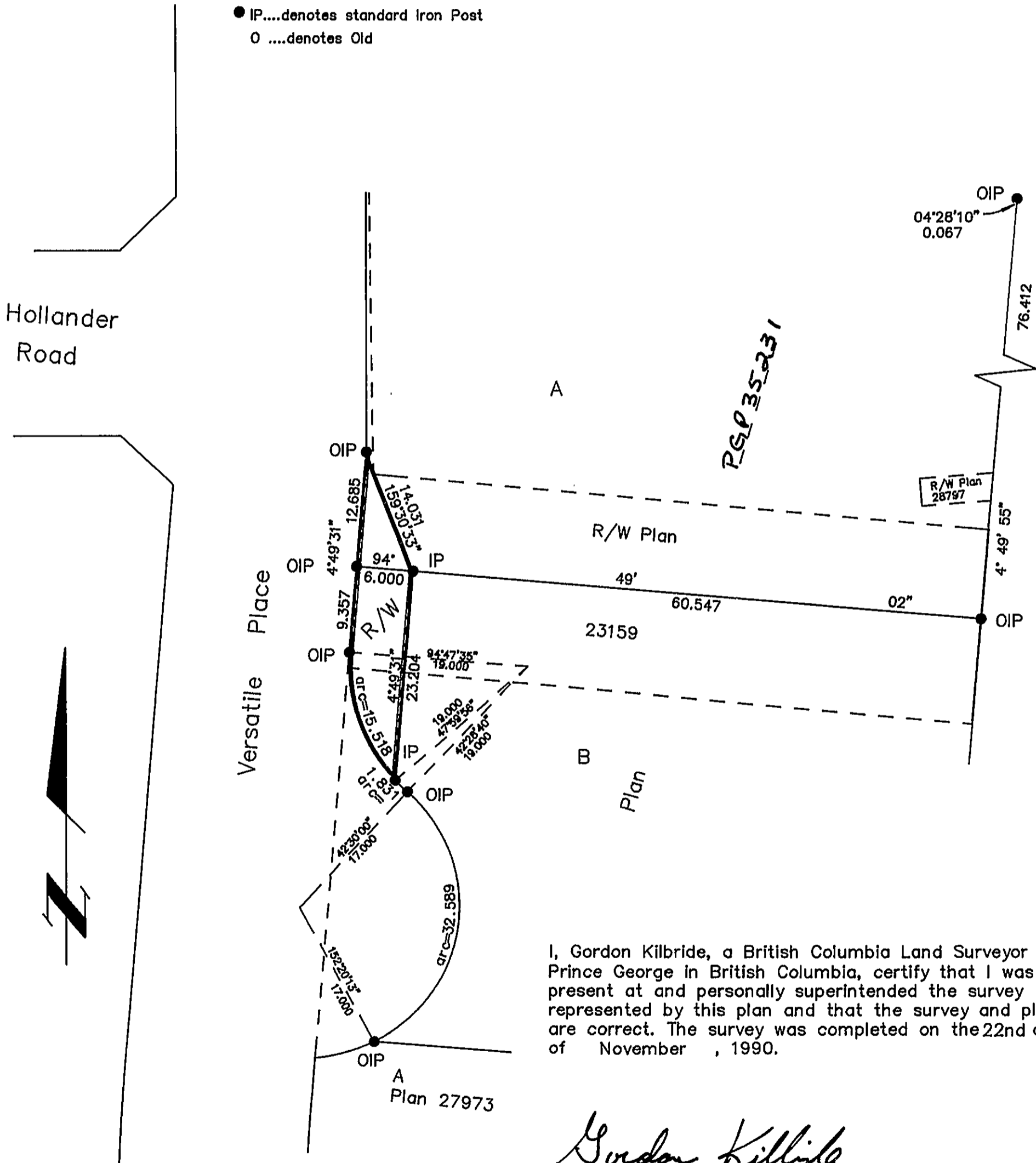
W. G. Kandy
Registrar

Scale: 1 : 500 (Distances are in metres)



LEGEND

- Bearings are astronomic,
derived from Plan
- IP....denotes standard Iron Post
-denotes Old



I, Gordon Kilbride, a British Columbia Land Surveyor of Prince George in British Columbia, certify that I was present at and personally superintended the survey represented by this plan and that the survey and plan are correct. The survey was completed on the 22nd day of November, 1990.

Gordon Kilbride
Gordon Kilbride, B.C.L.S.

Book of Reference	
Lot	Area
A	38.05 sq m
B	113.5 sq m

This plan lies within the Fraser Fort George Regional District.

McWilliam, Whyte, Goble & Associates B.C. Land Surveyors, Prince George (604) 562-1196 & 564-5322 (fax 562-3656) Kamloops - Smithers - Williams Lake		
F.B.- RW 76	D.L.- 753	REF. NO.- 90960