

EXPLANATORY PLAN OF STATUTORY RIGHT OF WAY
THROUGH PART OF LOTS 43 AND 66, DISTRICT LOT 754
CARIBOO DISTRICT, PLAN 10486.

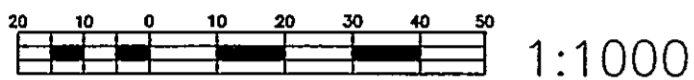
B.C.G.S. 93 G.087

26-FF

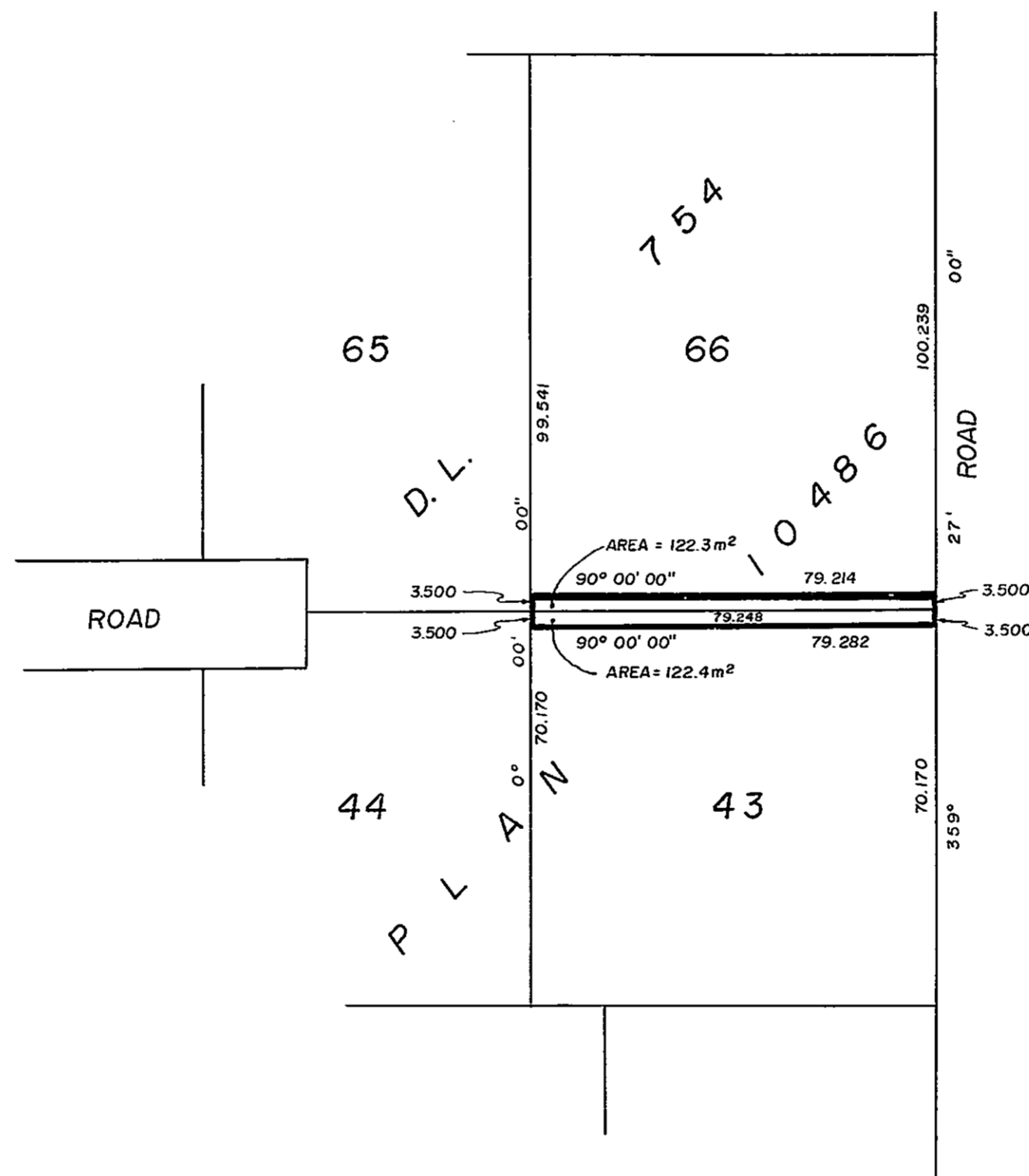
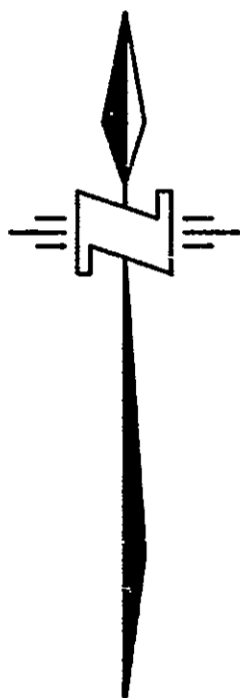
PLAN PGP35173

DEPOSITED IN THE LAND TITLE OFFICE
PRINCE GEORGE, B.C.
THIS 15 DAY OF Feb. 1991

W. G. Kenny
REGISTRAR *Per 8*



BEARINGS ARE ASTRONOMIC DERIVED FROM PLAN 10486
ALL DISTANCES ARE IN METERS AND DECIMALS THEREOF.



BOOK OF REFERENCE	
DESCRIPTION	AREA
LOT 66, D.L. 754 CD, PLAN 10486	122.3 m ²
LOT 43, D.L. 754 CD, PLAN 10486	122.4 m ²

THIS PLAN LIES WITHIN THE FRASER-FORT GEORGE REGIONAL DISTRICT.

McELHANNEY ASSOCIATES
PROFESSIONAL LAND SURVEYORS
1892 3rd AVENUE
PRINCE GEORGE, B.C. V2M 1G4
FILE 412-05057

CERTIFIED CORRECT
THIS 23rd DAY OF AUGUST, 1990.

H. E. Hickman
HARRY E. HICKMAN B.C.L.S.