

26-FF.226

PLAN NO. PGP34993

Deposited in the Land Title Office
at Prince George, B.C.
this 23 day of Nov 1990

W.G. Grandy
Registrar per R

EXPLANATORY PLAN OF EASEMENT
TO ACCOMPANY A PARTY WALL AGREEMENT
ON LOTS A AND B, PLAN **PGP34992**,
DISTRICT LOT 1605, CARIBOO DISTRICT.

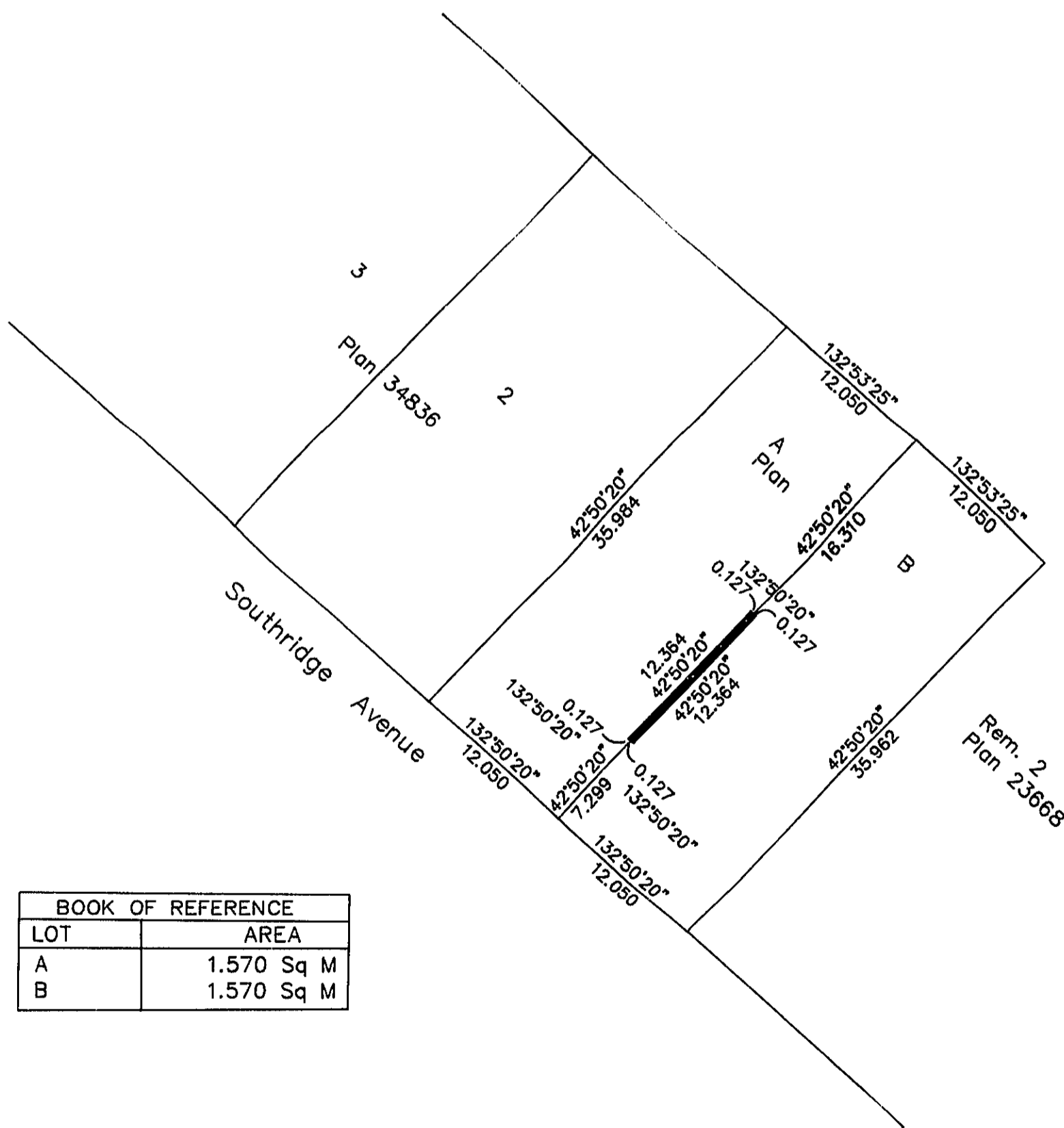
B.C.G.S. 93G.087

Scale: 1 : 400 (Distances are in metres)



LEGEND

Bearings are astronomic,
derived from Plan 34836.



BOOK OF REFERENCE	
LOT	AREA
A	1.570 Sq M
B	1.570 Sq M

Certified Correct
according to Land Title Office
records this 13th day of November, 1990.

Gordon Kilbride
Gordon Kilbride, B.C.L.S.

This plan lies within the Fraser Fort
George Regional District.

McWilliam, Whyte, Goble & Associates
B.C. Land Surveyors, Prince George
(604) 562-1196 & 564-5322 (fax 562-3656)
Kamloops - Smithers - Williams Lake

F.B.- SD 57 D.L.- 1605 REF. NO.- 90903F