

26-FF.226

PLAN NO PGP34991

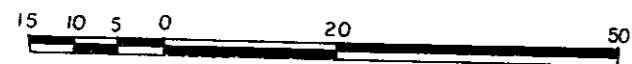
Deposited in the Land Title Office at Prince George this 29 day of NOVEMBER 1990.

W. J. Bandy *new*  
REGISTRAR

REFERENCE PLAN OF EASEMENT  
WITHIN LOTS B AND C, PLAN PGP34990  
DISTRICT LOT 2097, CARIBOO DISTRICT.

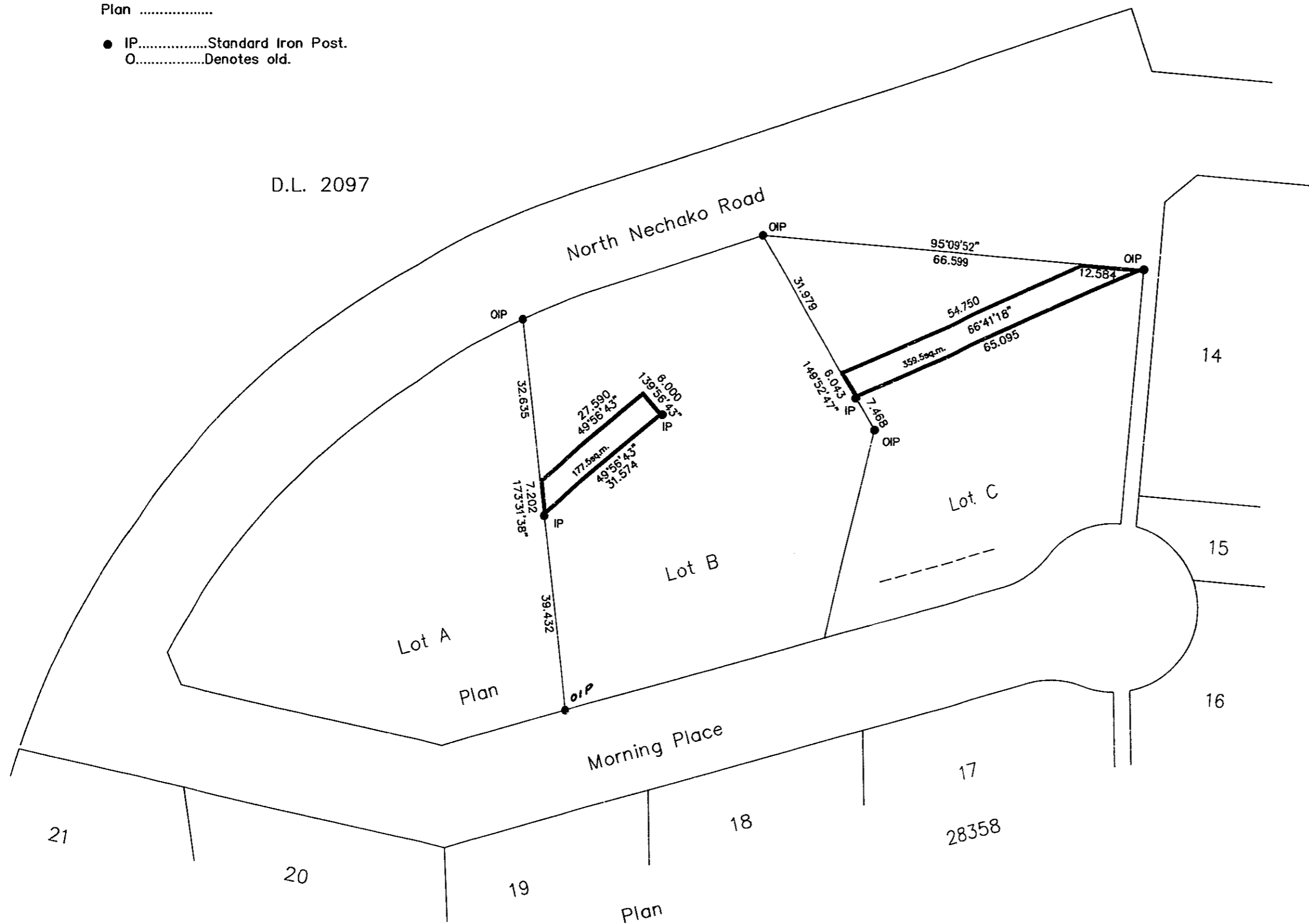
B.C.G.S. 93G.096

Scale: 1: 750 ( All distances are in metres. )



Bearings are astronomic derived from Plan .....

- IP.....Standard Iron Post.
- .....Denotes old.



I, Gordon Kilbride, a British Columbia Land Surveyor of Prince George in British Columbia, certify that I was present at and personally superintended the survey represented by this plan and that the survey and plan are correct. The survey was completed on the 6th day of June, 1990.

*Gordon Kilbride*  
Gordon Kilbride, B.C.L.S.

Book of Reference	
Description	Area
Lot B, Plan	177.5sq.m.
Lot C, Plan	359.5sq.m.

This plan lies within the Fraser Fort George Regional District.

McWilliam, Whyte, Goble & Associates  
B.C. Land Surveyors, Prince George  
(604) 562-1196 & 564-5322 (fax 562-3656)  
Kamloops - Smithers - Williams Lake

F.B.- SK 7 | D.L.- 2097 | REF. NO.- 89494A