

# 26-FF-226

EXPLANATORY PLAN OF LEASE OF  
PARTS OF THE BUILDING ON  
PARCEL I, PLAN 30421,  
DISTRICT LOT 343, CARIBOO DISTRICT.

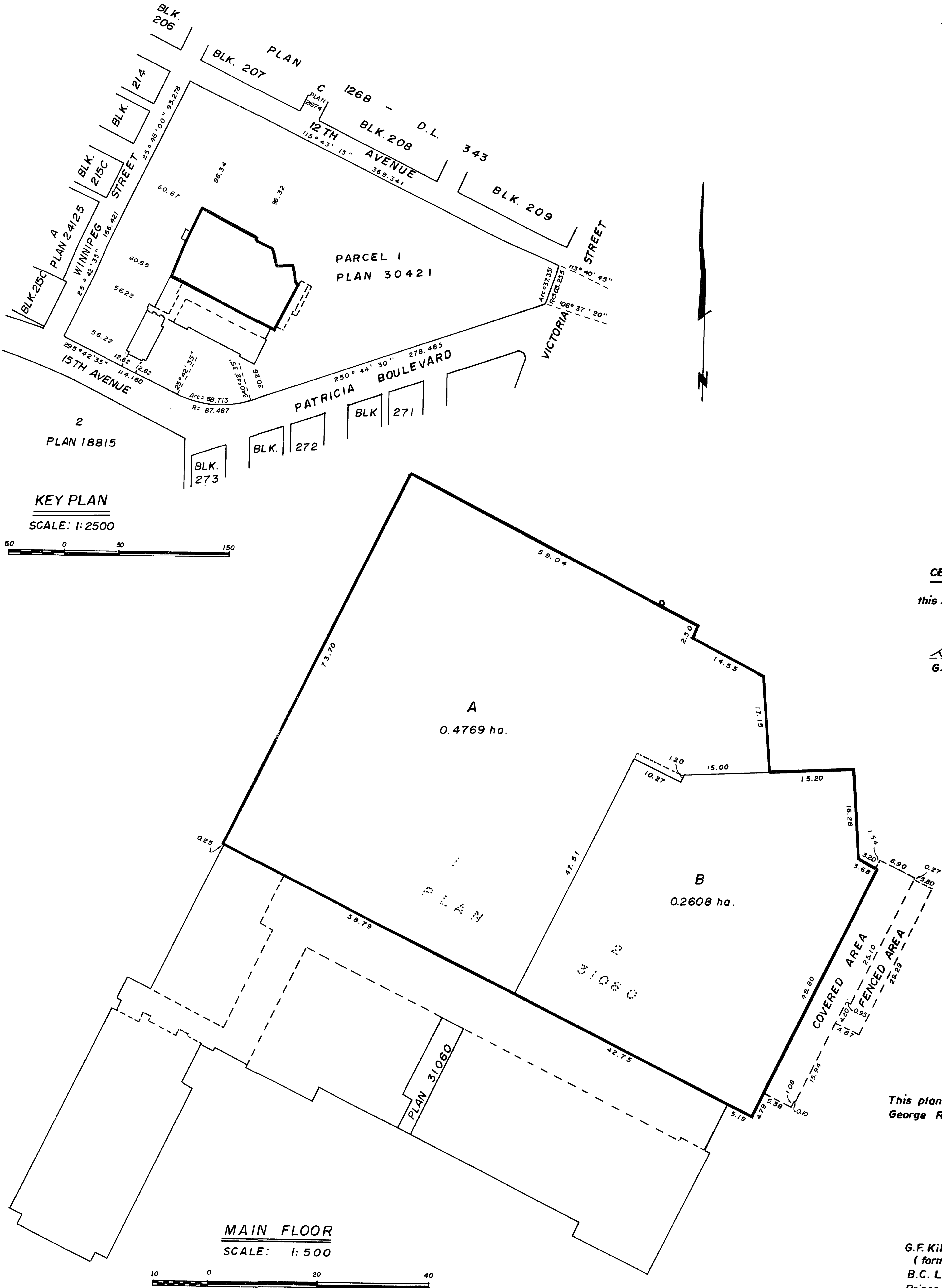
Scales are as indicated.

Bearings are astronomic derived from Plan 30421.

PLAN NO. 32701

Deposited in the Land Title Office at  
Prince George this 29 day of Dec, 1987.

W. B. Bandy  
Registrar



**CERTIFIED CORRECT**

this 19th day of May, 1987.

Gordon Kilbride  
G. Kilbride, B.C.L.S.

This plan lies within the Fraser Fort  
George Regional District.

G.F. Kilbride & Associates,  
(formerly Usher's)  
B.C. Land Surveyors,  
Prince George — B.C.  
File No. 14838-1 PU33