

# Cariboo District B.C.

Plan 1329

SCALE 4 CHAINS = 1 INCH

I, D. Mc DOUGALL, OF FORT GEORGE, B.C. A BRITISH COLUMBIA  
LAND SURVEYOR, MAKE OATH AND SAY, THAT I WAS PRESENT  
AT, AND DID PERSONALLY SUPERINTEND THE SURVEY  
REPRESENTED BY THIS PLAN, AND THAT THE SAID SUR-  
VEY AND PLAN ARE CORRECT; THE SAID SURVEY WAS  
COMPLETED ON THE 21<sup>ST</sup> DAY OF NOVEMBER, A.D. 1918.

SUBSCRIBED BEFORE ME THIS 11<sup>TH</sup> DAY OF NOVEMBER, 1918.

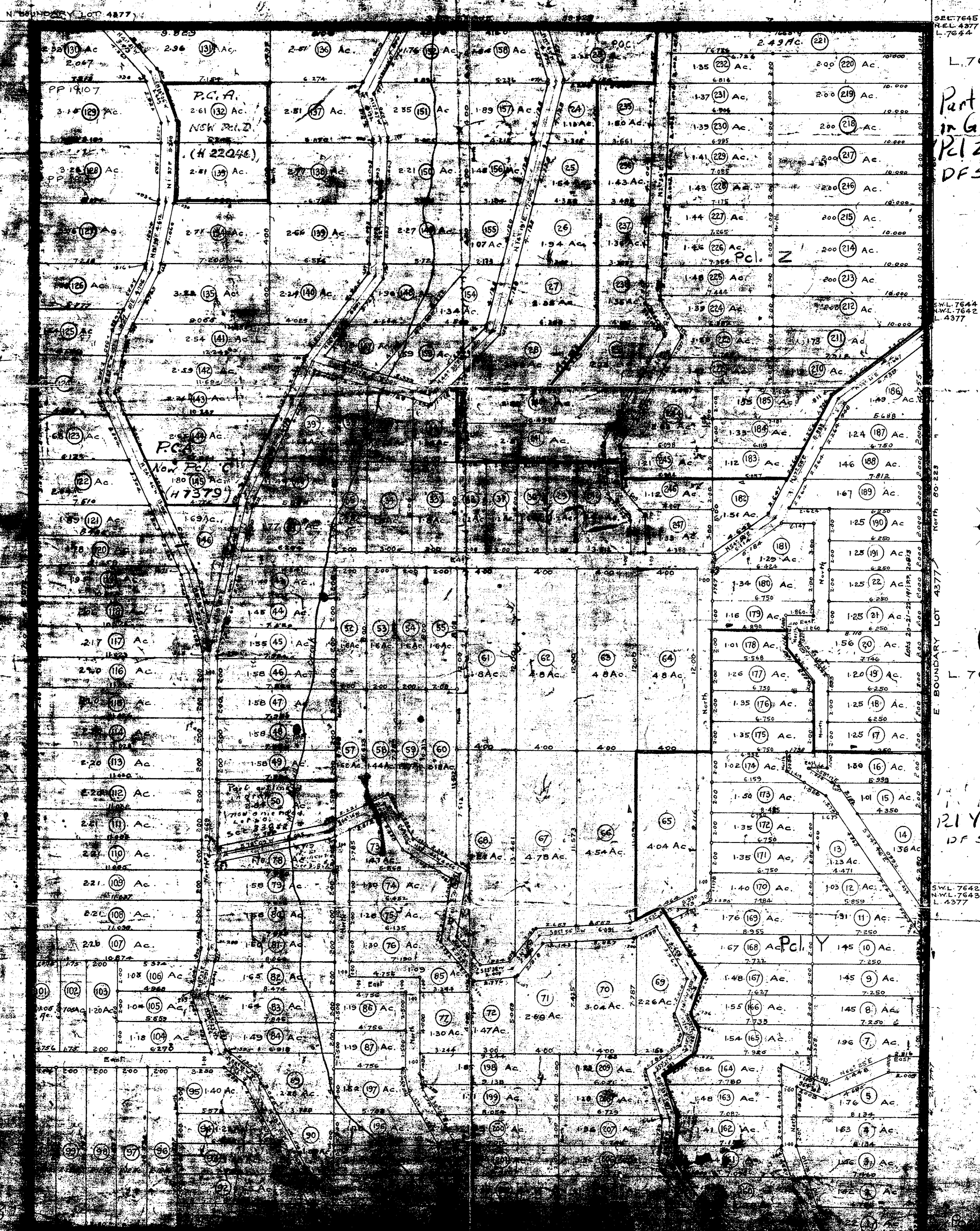
*D. Mc Dougall*  
D. Mc Dougall  
B.C.L.S.

*Witness*  
Witness  
Jennie H. Miller

NOTE:  
THE CORNERS OF ALL LOTS SHOWN  
ON THIS PLAN ARE DEFINED ON  
THE GROUND BY 5" X 3" X 30"  
WOODEN POSTS.

FOR ALL BOUNDARIES OF ROADS  
SHOWN FROM CENTRE LINE, WHERE  
NECESSARY.

BEARINGS ARE ASTRONOMIC  
AND ARE DERIVED FROM  
EAST BOUNDARY LOT 4377.



L. 7644

Part outline  
in Green Now  
P.C.I. 2 See  
DF 52710

S.W.L. 7644  
N.W.L. 7642  
L. 4377

L. 7642

Part outline  
in Blue  
P.C.I. 2 See  
DF 52710

S.W.L. 7642  
N.W.L. 7642  
L. 4377