

Plan of Subdivision of Part
of the South East 1/4 of District Lot 954
Plan B 1643 except Plan 9683
Cariboo District
Scale 1" = 100'

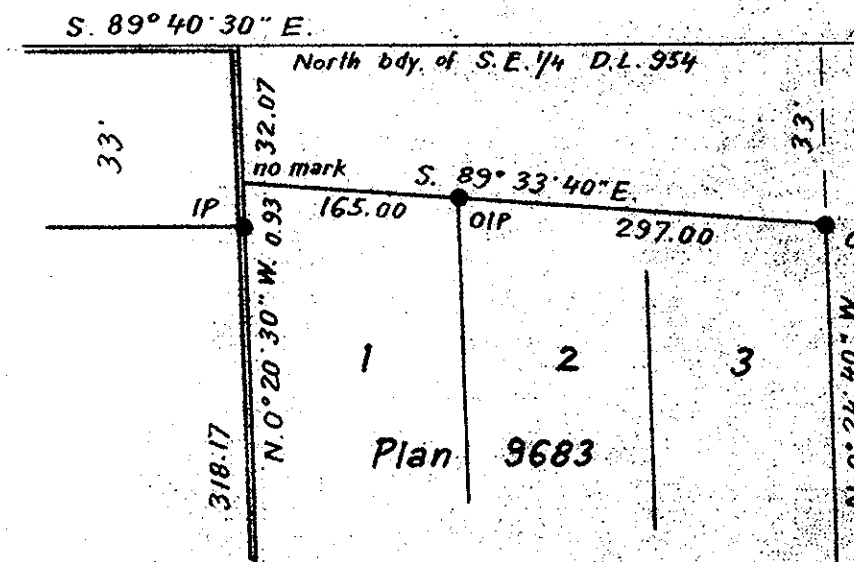
PLAN 11699
Deposited in the Land Registry Office at Kamloops, B.C.
this 25th day of August 1961

[Signature]
Registrar

Legend
Bearings are astronomic and are derived from
a solar observation referred to the meridian
through the NW corner of the S.E. 1/4 D.L. 954
Old iron posts found shown ● OIP
Iron posts set shown ● IP

N.E. 1/4 of D.L. 954

Detail Not to Scale



APPROVED BY
[Signature]
Island Registrar
MANAGER OF LANDS
[Signature]
REGISTRAR

I, R.J. Goble, of the city of Prince George, British Columbia, do hereby
make oath and say that I was present at and did personally supervise the
survey represented by this plan, and that the survey and plan are correct.
The said survey was completed on the 15th day of August 1961.

Shown before me at the city of Prince George
this 25th day of SEPTEMBER 1961

[Signature]
Notary Public for British Columbia
with British Columbia

Approved under the Land Registry Act
this 3rd day of AUGUST 1961

In Trust
Sebastien Poly
owner
Walter Lopez
witness

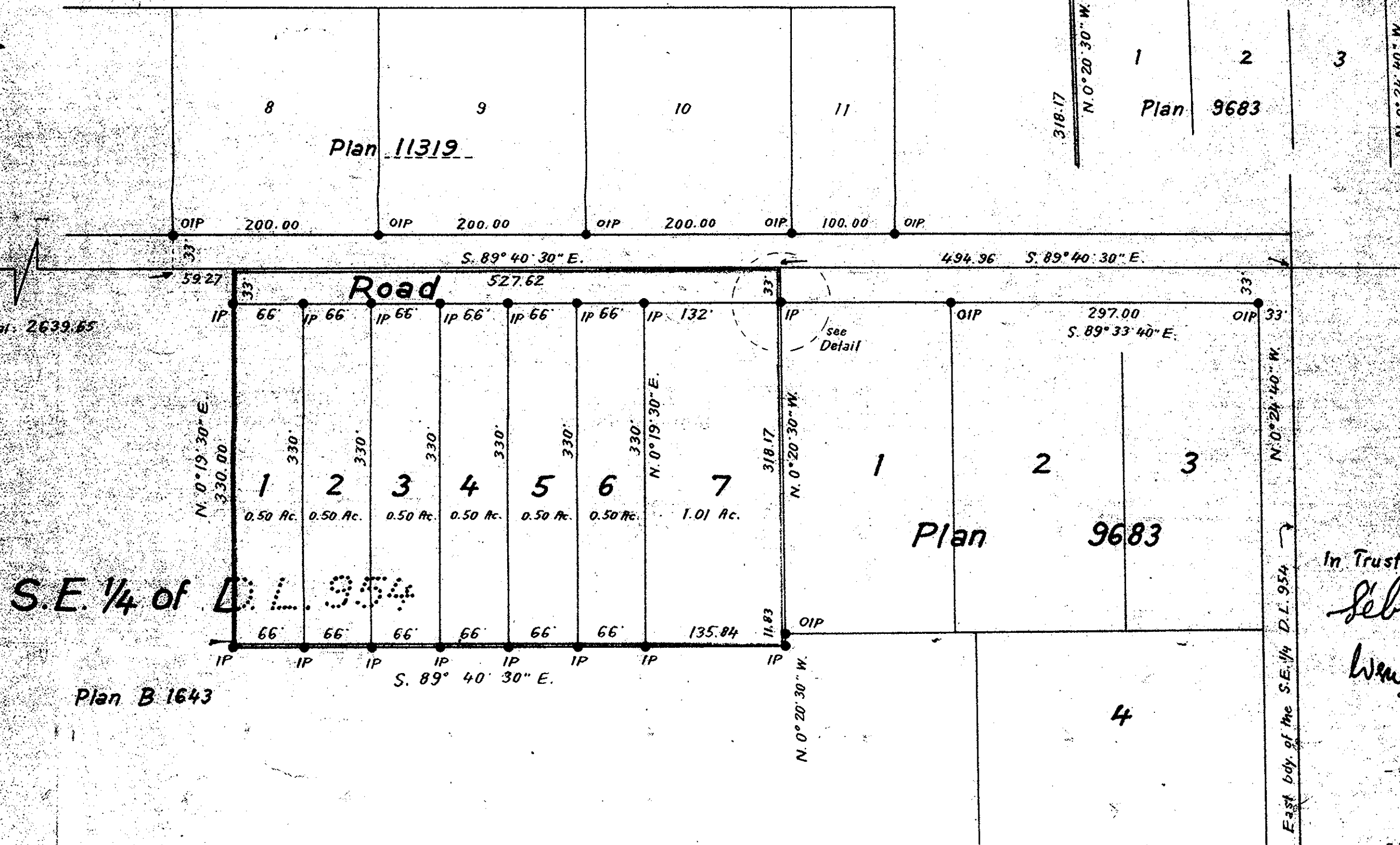
Sebastien Poly
owner
Walter Lopez
witness
AUGUST 22nd 1961

McWilliam Whyte Stephen Goble
British Columbia Land Surveyors

Ref. No. 600

Frac.
N.W. 1/4
D.L. 954

S.W. 1/4
D.L. 954



Found
OIP and DWP
S. 89° 40' 30" E.
1557.80
NW corner
of S.E. 1/4 D.L. 954
Total: 2639.65

S.E. 1/4 of D.L. 954
Plan B 1643