

Plan of Subdivision of  
Part of District Lot 10224  
Cariboo District  
Scale 1" = 100'

Legend  
Bearings are astronomic and are derived  
from the East boundary of D.L. 10222  
as shown on Plan 10836  
Old standard pipe post found shown • OPP  
Old iron post found shown • OIP  
Iron post set shown • IP

Lot A, Plan 10836

PLAN 11552

Deposited in the Land Registry Office at Kamloops, B.C.  
this 19<sup>th</sup> day of June 1961

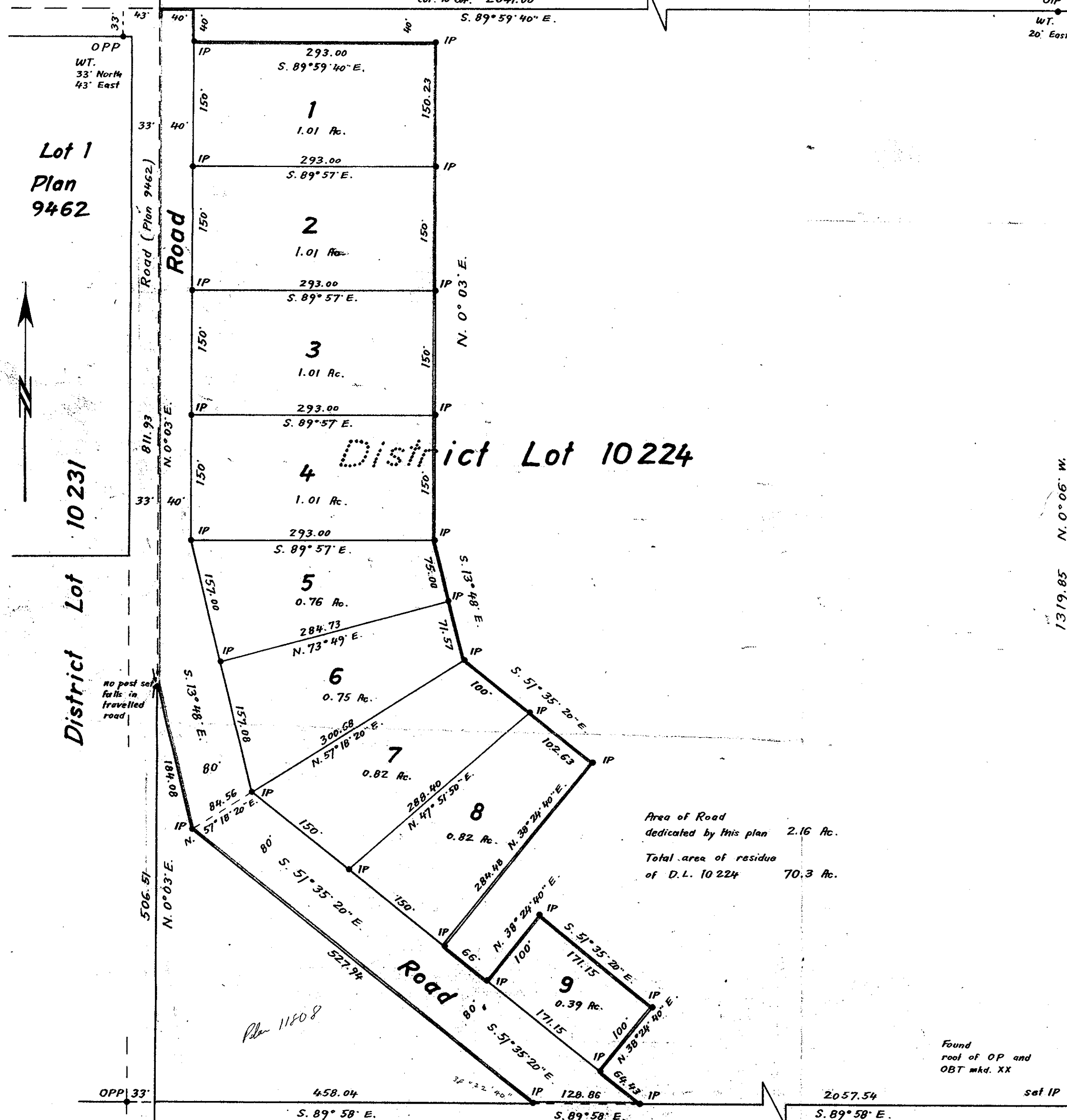
*[Signature]*  
Registrar

D.L. 10230

District Lot 10223

D.L. 10222

District Lot 2609



I, R.J. Goble, of the city of Prince George, British Columbia Land Surveyor, make oath and say that I was present at and did personally superintend the survey represented by this plan and that the survey and plan are correct. The said survey was completed on the 17<sup>th</sup> day of May 1961.

Sworn before me this  
17<sup>th</sup> day of MAY 1961

B.C.L.S.

*[Signature]*  
A Commissioner for taking affidavits  
within British Columbia

*[Signature]*  
owner

*[Signature]*  
witness

Approved under the Land Registry Act  
this 31<sup>st</sup> day of MAY 1961.

*[Signature]*  
Approving Officer  
Dept. of Highways, Prince George, B.C.

Approved May 17  
*[Signature]*  
Dept. of Municipal Affairs

McWilliam, Whyte, Serle & Goble  
British Columbia Land Surveyors

Ref. No. 61013