

SUBDIVISION OF LOT 3683

CARIBOO DISTRICT,
B. C.

SCALE 4 CHAINS TO 1 INCH

*The certifying that we are the legal
owners of Lot 3683, group 10th
in Cariboo Dist. B.C. and wish
to register this map of a
sub-division in the name
of the land-owners as per
the plan enclosed by the parties
and the survey is as follows -*

*1153
7 Feb 1912
A. J. Burden*

Parts outlined cancelled under Plans Cancellation Act, Sec 9/1341/61, D.F. 40958

Part outlined in ... to be known as Parcel 'A'

Part outlined in ... to be known as Parcel 'B'

Part outlined in ... to be known as Parcel 'C'

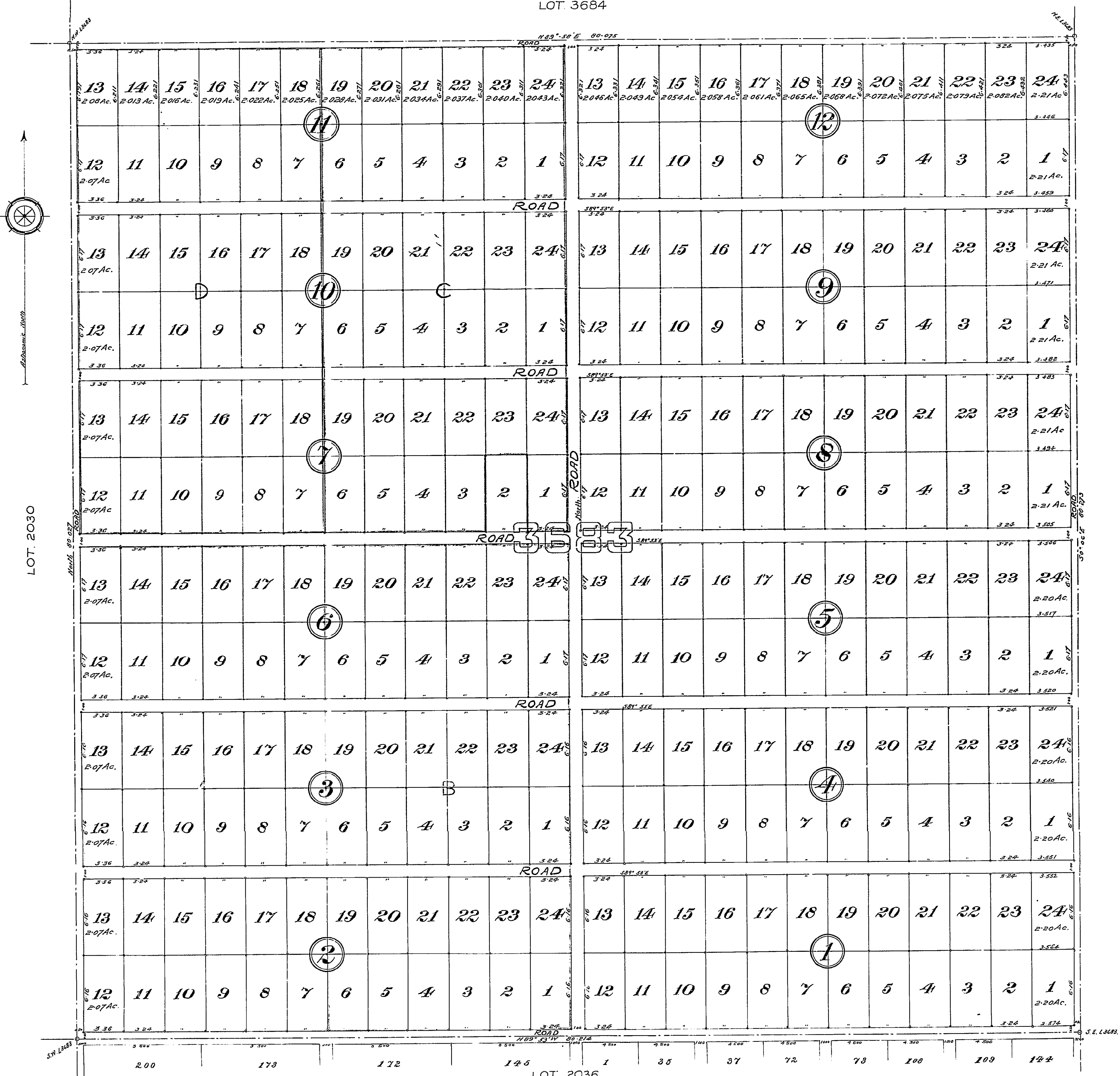
Part outlined in Blue to be known as Parcel 'D'

*I, F. P. Burden a British Columbia Land Surveyor make oath
and say that I was present at Lot 3683, Cariboo District,
and did personally supervise the survey represented by this
plan, and that the survey and plan are correct. The
said survey was completed on the 11th day of June 1912
Signed before me this
7th day of June 1912.*

F. P. Burden, D.C.S.

*Note - The corners of all lots shown
on this plan are defined on the ground
by 3" x 3" wooden posts.
Bearings are astronomic being taken from west boundary of lot 3683
Distances are in chains and decimals thereof.*

LOT 3684



LOTS 6.17 x 3.24 CHAINS, CONTAIN 2 ACRES

LOT 2036