

D. L. 953

Found OWP  
marked 1/4 D.L. 953  
1/4 D.L. 954  
set IP

NW corner  
of N.E. 1/4 D.L. 954  
Made BT's  
10" pine S 12° E. 11.2'  
10" pine S. 44° W. 15.2'  
14" pine N. 45° W. 21.7'

# Plan of Subdivision of Part of the North East 1/4 of District Lot 954 Cariboo District Scale 1" = 100'

## PLAN 11319

Deposited in the Land Registry Office at Kamloops, B.C.,  
this 10<sup>th</sup> day of March 1961.

*[Signature]*  
Registrar

Legend  
Bearings are astronomic and are derived from  
a solar observation referred to the meridian  
through the SW corner of the N.E. 1/4 D.L. 954  
Old iron posts found shown ● OIP  
Iron posts set shown ● IP

Plan 5  
012596305.  
DL 954

Approved under the Land Registry Act  
this 11<sup>th</sup> day of JANUARY 1961.

*[Signature]*  
Approving Officer  
Dept. of Highways, Victoria, B.C.

I, R.J. Goble, of the city of Prince George, British Columbia Land Surveyor,  
make oath and say that I was present at and did personally superintend  
the survey represented by this plan and that the survey and plan are correct.  
The said survey was completed on the 18<sup>th</sup> day of September 1960.

Sworn before me at the city of Prince George  
this 2<sup>nd</sup> day of SEPTEMBER 1960.

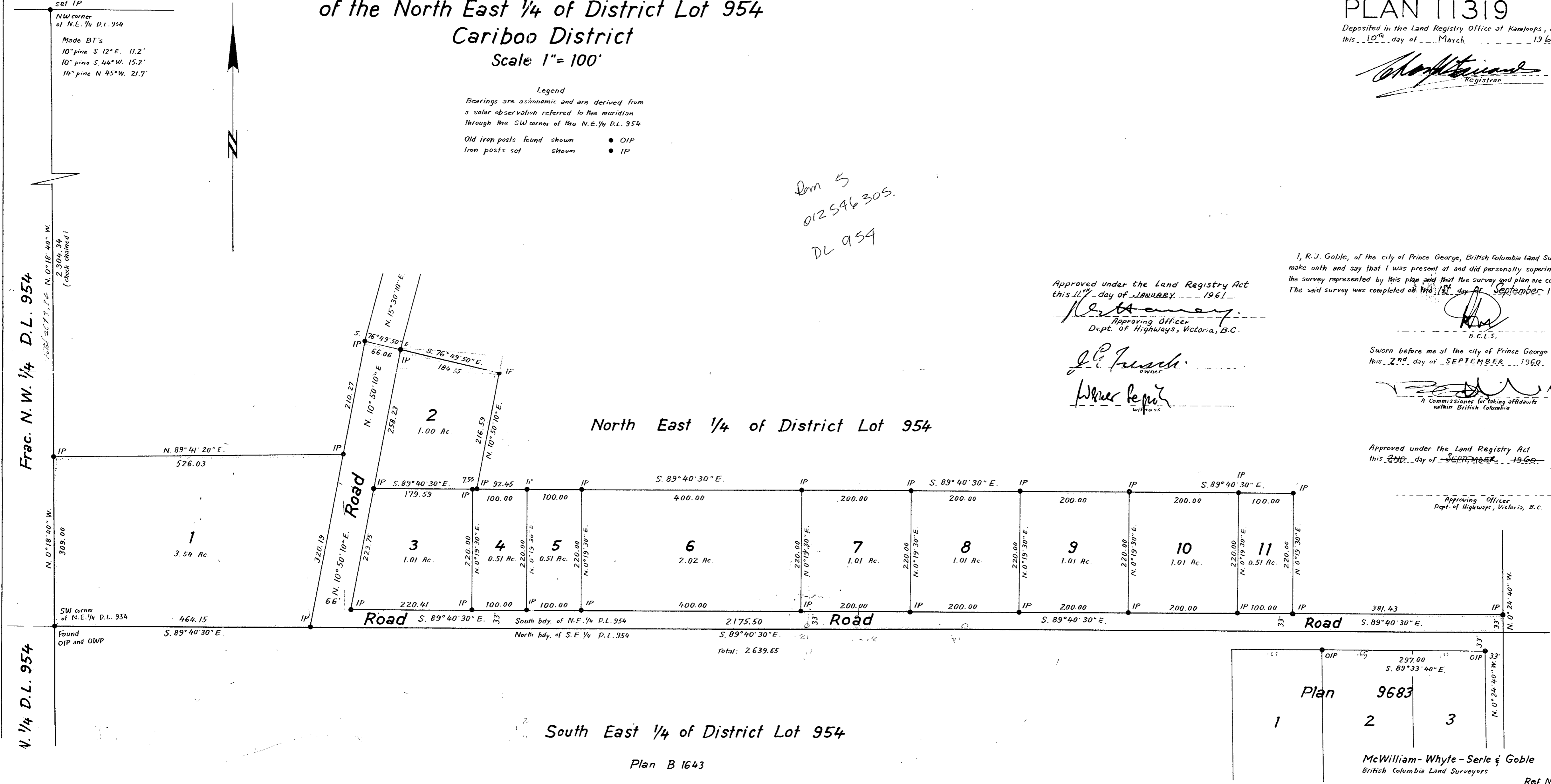
*[Signature]*  
A Commissioner for taking affidavits  
within British Columbia

Approved under the Land Registry Act  
this 2<sup>nd</sup> day of SEPTEMBER 1960.

Approving Officer  
Dept. of Highways, Victoria, B.C.

Frac. N.W. 1/4 D.L. 954

N. 1/4 D.L. 954



North East 1/4 of District Lot 954

South East 1/4 of District Lot 954

Plan B 1643

McWilliam-Whyte-Serle & Goble  
British Columbia Land Surveyors

Ref. No. 60036