

PLAN OF SUBDIVISION
OF PART OF THE N.1/2 D.L. 4047
CARIBOO DISTRICT, BRITISH COLUMBIA
SCALE: 1" = 100'

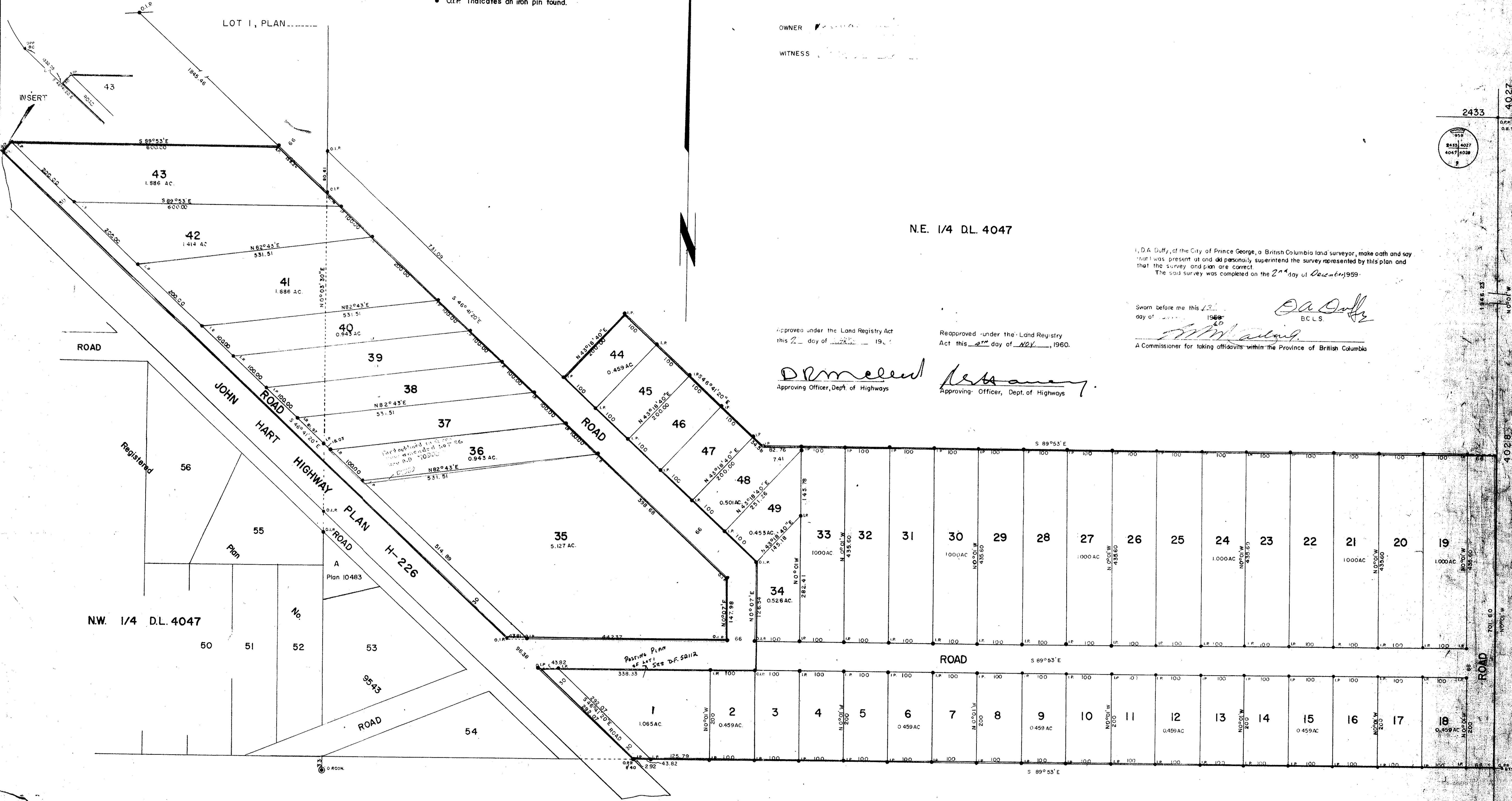
PLAN NO. 11088
Deposited in the Land Registry
Office at Kamloops this 6th
day of December 1960.

[Signature]
Registrar

NOTE: Bearings are astronomic, derived from Highway Plan H-226.

- LEGEND:
- P.P. indicates a pipe post placed.
 - O.P.P. indicates a pipe post found.
 - O.P.Con. indicates a concrete monument found.
 - I.P. indicates an iron pin placed.
 - O.I.P. indicates an iron pin found.

OWNER _____
WITNESS _____



N.E. 1/4 D.L. 4047

I, D.A. Duffy, of the City of Prince George, a British Columbia land surveyor, make oath and say that I was present and did personally superintend the survey represented by this plan and that the survey and plan are correct.
The said survey was completed on the 2nd day of December 1959.

Sworn before me this 13th day of 1960
[Signature]
B.C.L.S.
A Commissioner for taking affidavits within the Province of British Columbia

Approved under the Land Registry Act
this 7th day of _____ 1960.

Reapproved under the Land Registry
Act this 27th day of NOV., 1960.

[Signature]
Approving Officer, Dept. of Highways

[Signature]
Approving Officer, Dept. of Highways

2433
40.27
O.P.P.
O.S.T.
1959
2433 4027
4047 4028
9