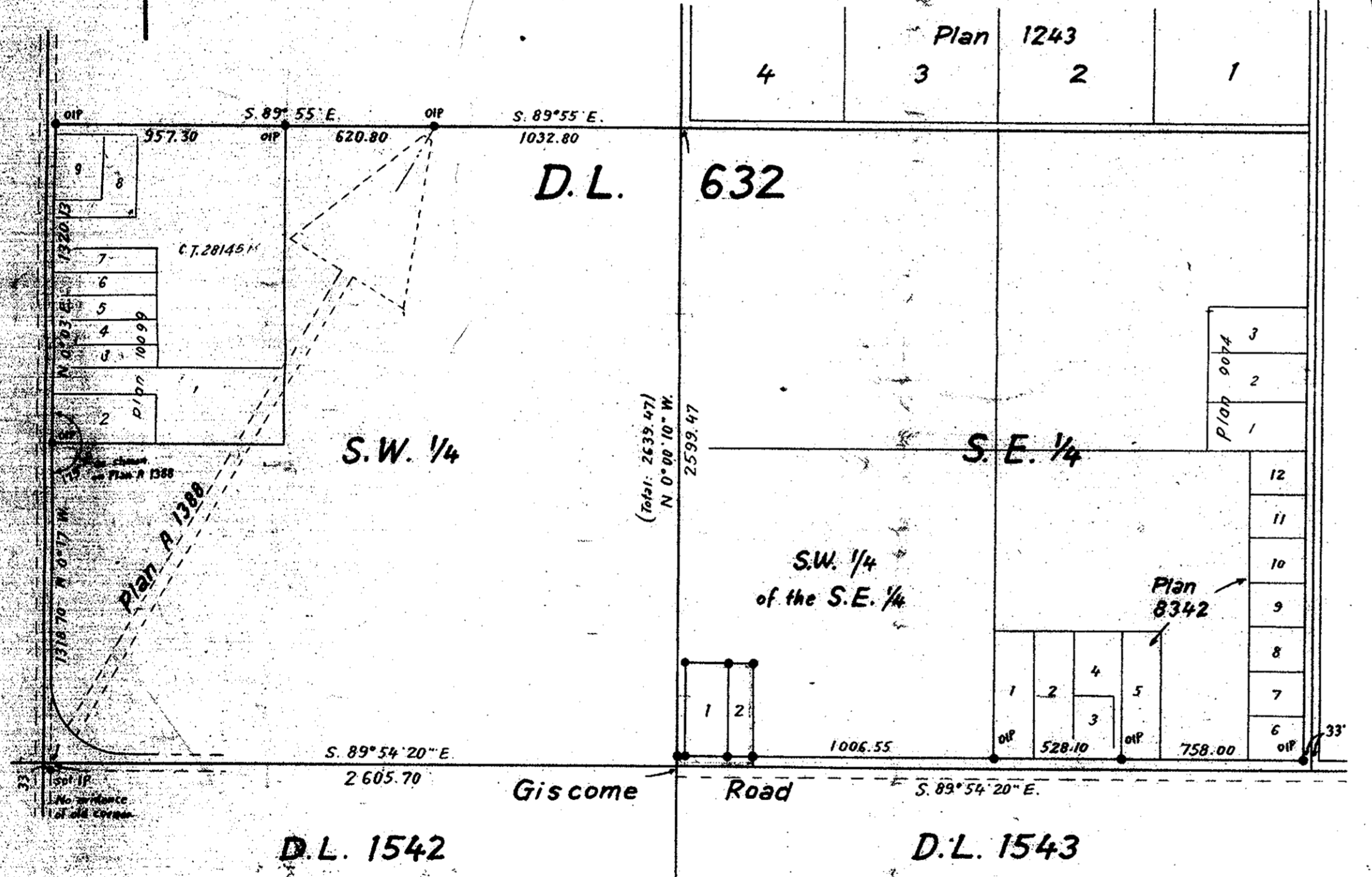


Plan of Subdivision of Part of
Parcel A of District Lot 632, D.D. 5257 M,
and of Part of the Remainder
of the S.W. 1/4 of the S.E. 1/4 of District Lot 632,
Cariboo District
Scale 1" = 100'

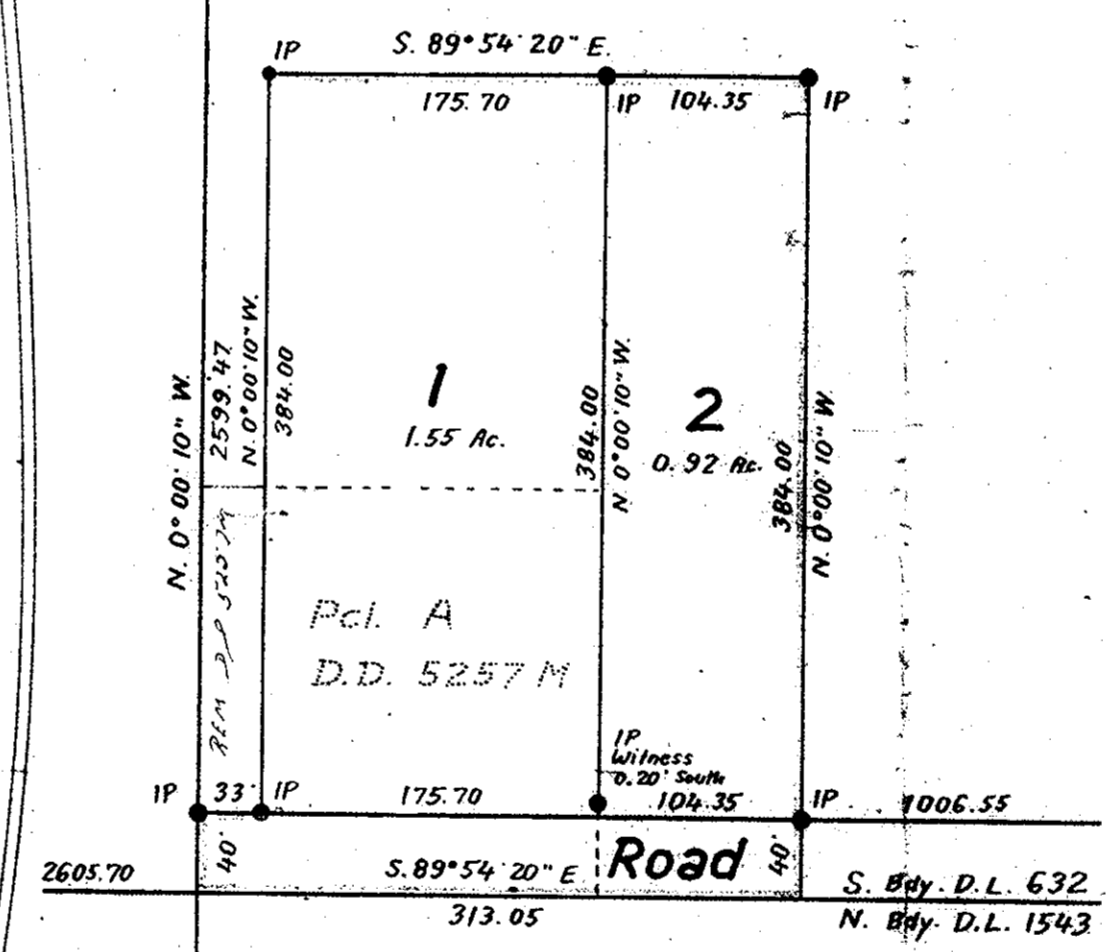
PLAN 11071
Deposited in the Land Registry Office at Kamloops, B.C.,
this 13th day of Dec. 1960

[Signature]

Key Plan Scale 1" = 500'



Legend
Bearings are astronomic and are derived
from the South bdy. D.L. 632 as shown as
S. 89° 54' 20" E. on Plan 8342.
Old iron posts found shown ● OIP
Iron posts set shown ● IP



Inspected this 25th day of August 1960

I, R.J. Goble, of the City of Prince George, British Columbia, do hereby
make oath and say that I was present at and did personally supervise the
survey represented by this plan and that the bearings and distances
thereon were correctly measured and reduced to mean sea level.
The said survey was completed on the 22nd day of April 1960.

Sworn before me at the City of Prince George
this 22nd day of April 1960

Approved under the Land Registry Act
this 1st day of NOVEMBER 1960

W. R. Chitterson
[Signature]
Werner Lager
witness to both signatures

[Signature]
Approving Officer
Dept. of Mines, Victoria, B.C.

McWilliam - Whyte - Serie & Goble
British Columbia Land Surveyors
Ref. No. 60020