

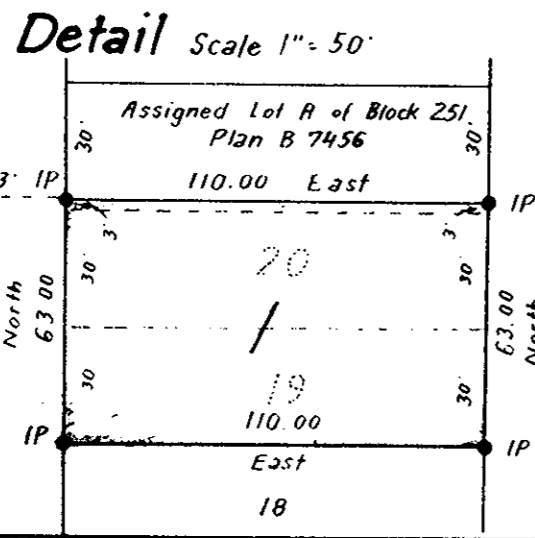
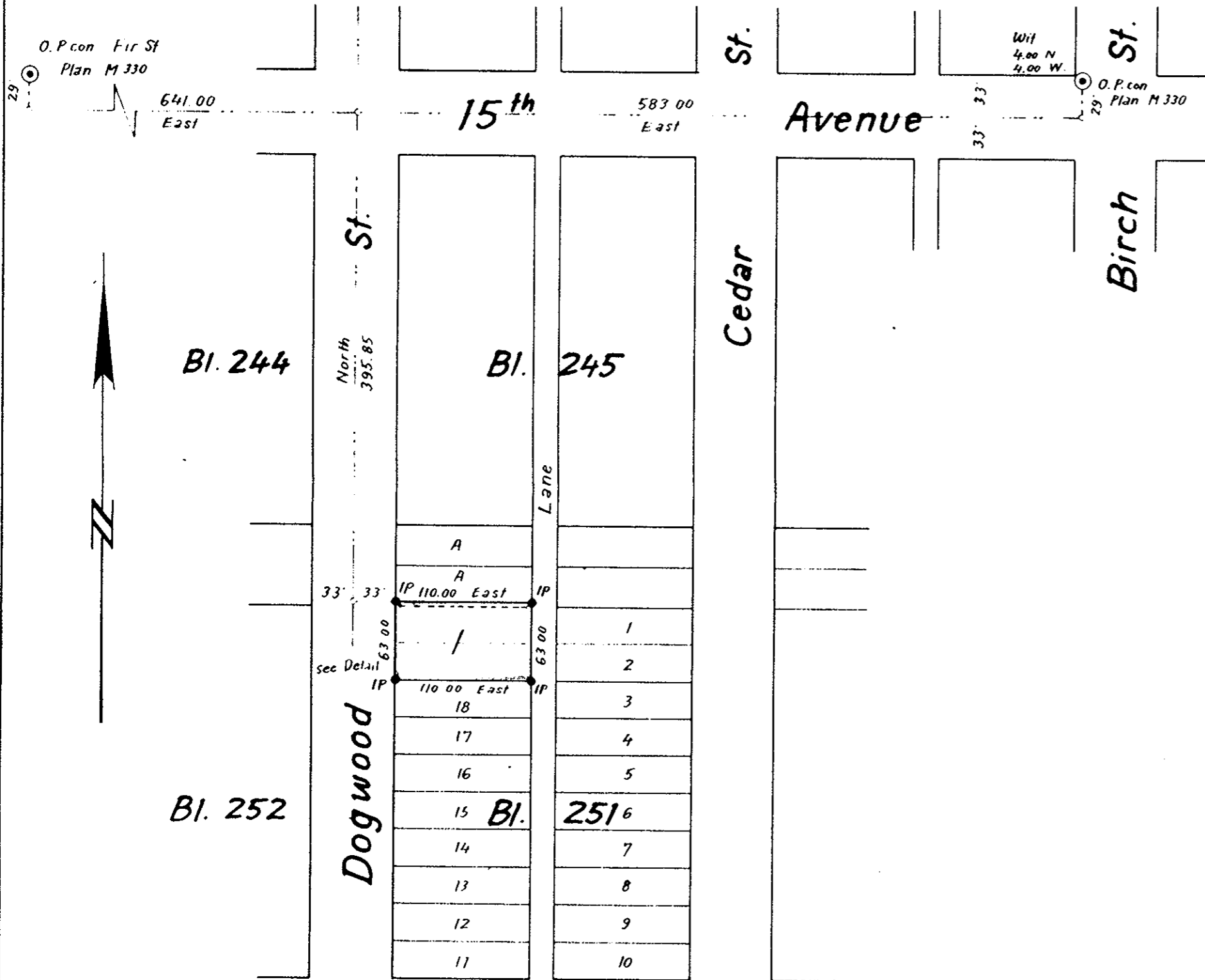
Plan of Subdivision of Lots 19 and 20, Block 251,  
and Part of Assigned Lot A of Block 251, Plan B 7456,  
Plan 1268, District Lot 343, Cariboo District

Scale 1" = 100'

PLAN No. 10896  
Deposited in the Land Registry Office at Kamloops, B.C.  
this 19<sup>th</sup> day of Sept. 1960

*Christie*  
Registrar

Legend  
Bearings are astronomic and are derived from  
15<sup>th</sup> Avenue as East as shown on Plans  
1268 and M 330  
Old standard pipe posts in concrete found shown ● O.P. con  
Iron posts set shown ● IP



I, R.J. Goble, of the city of Prince George, British Columbia Land Surveyor,  
make oath and say that I was present at and did personally superintend the  
survey represented by this plan and that the survey and plan are correct.  
The said survey was completed on the 8<sup>th</sup> day of September 1960.

*R.J. Goble*  
P.C.L.S.

Sworn before me at the city of Prince George  
this 9 day of September 1960.

*W. Beckley*  
A Commissioner for taking affidavits  
within British Columbia

Approved under the Land Registry Act  
this 12 day of September 1960.

*Ernest A. Calymond*  
*Udale M. Calymond*  
witness to both signatures.

*C. Jones*  
Approving Officer  
City of Prince George, B.C.

McWilliam-Whyte-Serle & Goble  
British Columbia Land Surveyors

Ref. No. 60123