

D.L. 2425

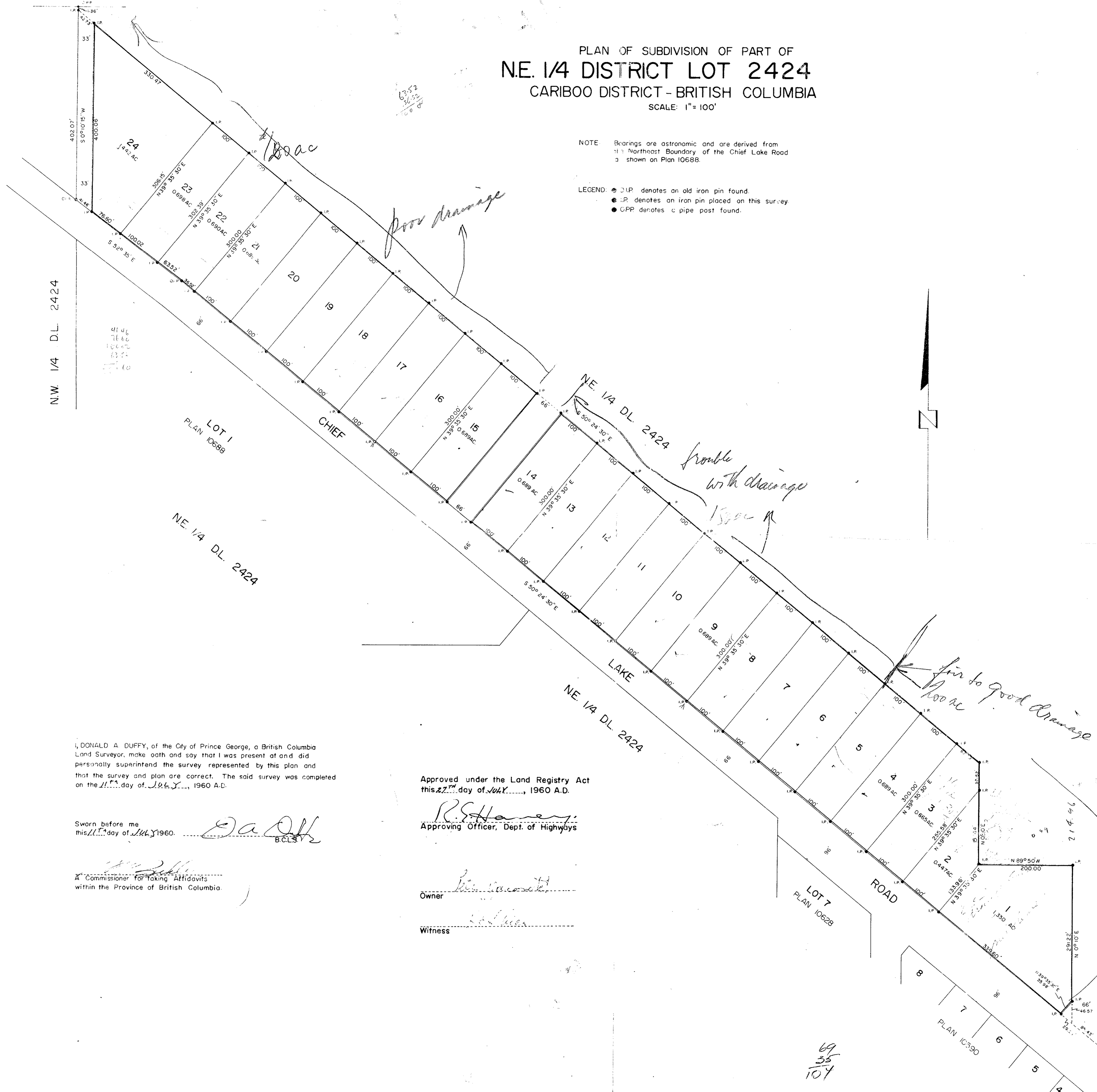
PLAN OF SUBDIVISION OF PART OF
N.E. 1/4 DISTRICT LOT 2424
CARIBOO DISTRICT - BRITISH COLUMBIA
SCALE: 1" = 100'

PLAN NO. 10807
Deposited in the Land Registry
Office at Kamloops, B.C.
this 16th day of Aug., 1960.

Donald A. Duffy
Registrar

NOTE: Bearings are astronomic and are derived from
1. Northeast Boundary of the Chief Lake Road
2. shown on Plan 10688.

LEGEND: ● I.P. denotes an old iron pin found.
● I.P. denotes an iron pin placed on this survey.
● C.P.P. denotes a pipe post found.



N.W. 1/4 D.L. 2424

LOT 1
PLAN 10688

NE 1/4 D.L. 2424

NE 1/4 D.L. 2424

LOT 7
PLAN 10628

PLAN 10390

PLAN 10061

I, DONALD A. DUFFY, of the City of Prince George, a British Columbia
Land Surveyor, make oath and say that I was present at and did
personally superintend the survey represented by this plan and
that the survey and plan are correct. The said survey was completed
on the 11th day of July, 1960 A.D.

Sworn before me
this 11th day of July, 1960.

Donald A. Duffy
B.C.L.S.

A Commissioner for Taking Affidavits
within the Province of British Columbia.

Approved under the Land Registry Act
this 27th day of July, 1960 A.D.

R.S. Hamer
Approving Officer, Dept. of Highways

Owner

Witness

69
35
107