

PLAN OF SUBDIVISION OF PART OF PARCEL A, PLAN 9856 AND PART OF CLOSED PORTION OF CARNEY STREET, PLAN B 7445 DISTRICT LOT 936 G.1 CARIBOO DISTRICT

SCALE 1" = 100'

PLAN 10005
Deposited in the Land Registry Office at Kamloops, B.C.
this 16th day of December, 1960.

W. J. Goble
Surveyor-General

57

56
Plan 696
D.L. 936

Y
D.L. 1429

St. _____ St. _____ St. _____

148

16th

149

17th

150

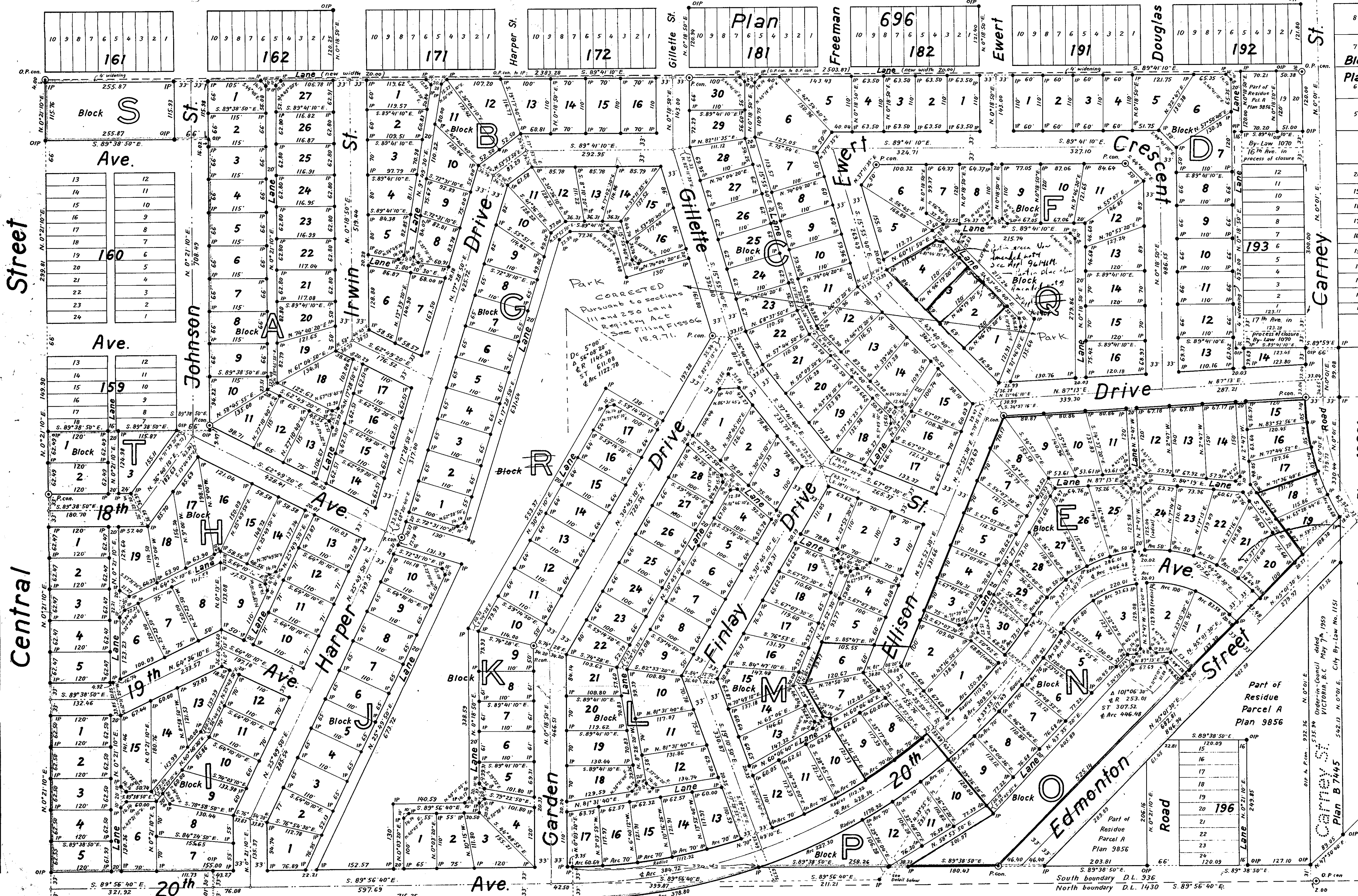
151

152

Central Street

15th

Avenue



Block A
Plan 7458

Plan 1268

Lot 343

Plan 10231

Plan 9856

Plan 49

Legend
Bearings are astronomic and are derived from Plan 3856.
Old standard pipe posts in concrete found shown \odot O.P. con.
Old iron posts found shown \bullet O.I.P.
Standard pipe posts in concrete set shown \circ P. con.
Iron posts set shown \bullet IP

Approved under Section 80 (3) of the Land Registry Act according to my Order dated August 18th, 1959, and filed in the Land Registry Office at Kamloops, B.C., as number 22, Dated at Victoria, B.C., this 22nd day of November, 1960.

W. J. Goble
SURVEYOR - GENERAL

Corporation of the City of Prince George

John ...
Municipal Manager

Part outlined in green cancelled under Plan Cancellation A.I. D.F. 47626 and now known as Parcel Z.

I, R. J. Goble, of the city of Prince George, British Columbia Land Surveyor, make oath and say that I was present at and did personally superintend the survey represented by this plan and that the survey and plan are correct. The said survey was completed on the 5th day of August, 1960.

Sworn before me at the city of Prince George this 11th day of October, 1960.

W. J. Goble
City of Prince George, B.C.

Approved under the Land Registry Act this 11th day of October, 1960.

W. J. Goble
City of Prince George, B.C.

McWilliam - Whyte - Serle & Goble
British Columbia Land Surveyors

Ref. No. 58015

Plan 696
D.L. 936

Plan 1085
D.L. 1430

D.L. 1430

Detail 22

21

8

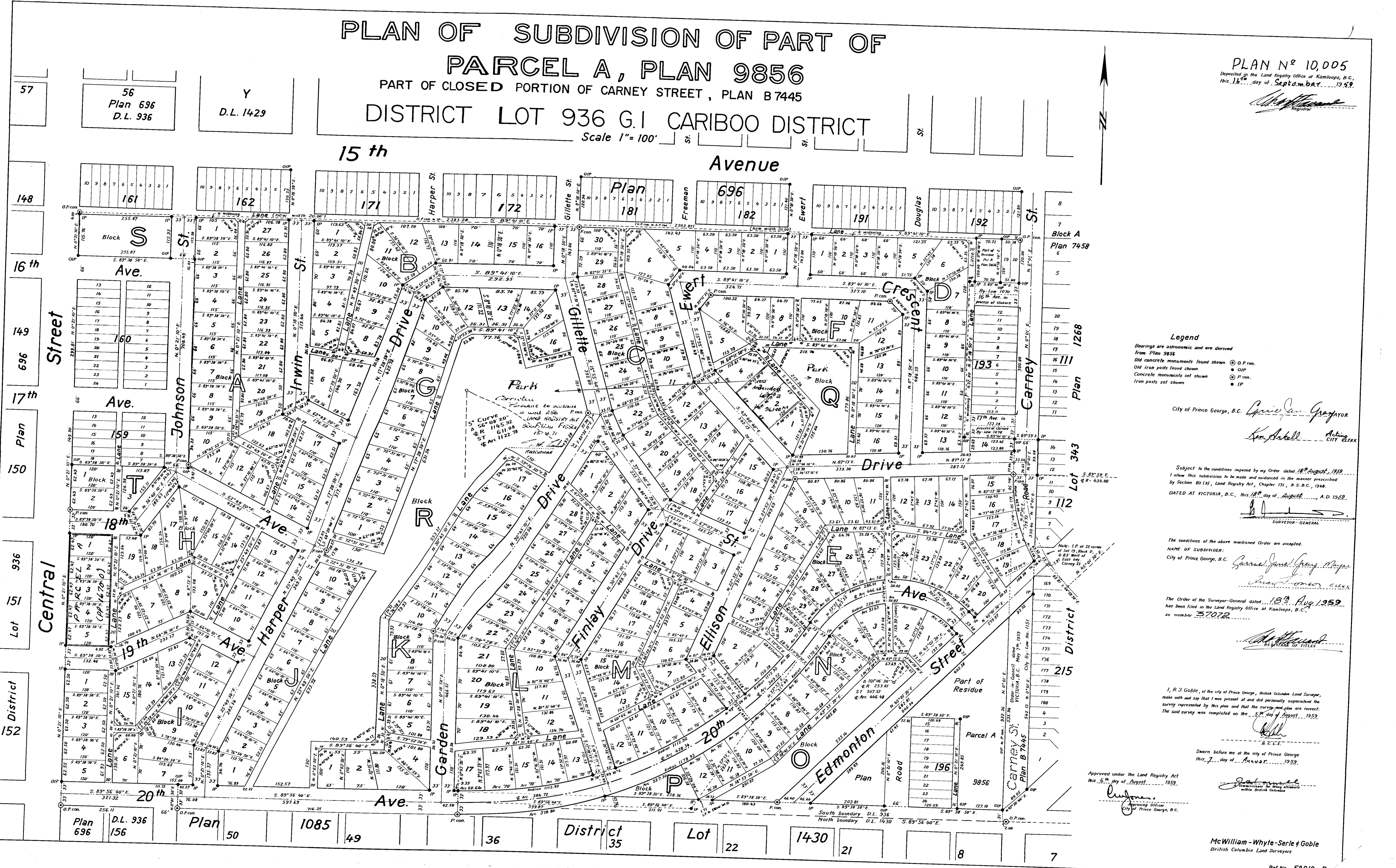
7

PLAN OF SUBDIVISION OF PART OF PARCEL A, PLAN 9856 PART OF CLOSED PORTION OF CARNEY STREET, PLAN B7445 DISTRICT LOT 936 G.I. CARIBOO DISTRICT

Scale 1" = 100'

PLAN N^o 10,005
Deposited in the Land Registry Office at Kamloops, B.C.,
this 18th day of September, 1959.

[Signature]
Registrar



Legend
Bearings are astronomic and are derived from Plan 9856
Old concrete monuments found shown \odot O.P. con.
Old iron posts found shown \bullet O.I.P.
Concrete monuments set shown \circ P. con.
Iron posts set shown \bullet I.P.

City of Prince George, B.C. *[Signature]* Mayor
[Signature] Acting City Clerk

Subject to the conditions imposed by my Order dated 18th August, 1959,
I allow this subdivision to be made and extended in the manner prescribed
by Section 80 (1), Land Registry Act, Chapter 171, R.S.B.C., 1948.
DATED AT VICTORIA, B.C., this 18th day of August, A.D. 1959.
[Signature]
SURVEYOR-GENERAL

The conditions of the above mentioned Order are accepted.
NAME OF SUBDIVIDER:
City of Prince George, B.C. *[Signature]*
[Signature] C.A.M.B.A.

The Order of the Surveyor-General dated 18th Aug. 1959
has been filed in the Land Registry Office at Kamloops, B.C.,
as number 37072.

[Signature]
REGISTRAR OF TITLES

I, R.J. Goble, of the City of Prince George, British Columbia Land Surveyor,
make oath and say that I was present at and did personally supervise the
survey represented by this plan and that the survey-map plan are correct.
The said survey was completed on the 5th day of August, 1959.

Sworn before me at the City of Prince George
this 7th day of August, 1959.
[Signature]
Approved under the Land Registry Act
this 5th day of August, 1959.
[Signature]
Acting Officer
City of Prince George, B.C.

McWilliam - Whyte - Serle & Goble
British Columbia Land Surveyors
Ref. No. 58019-R