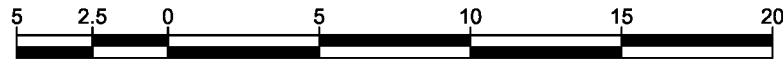


**Strata Plan of Lot 22, District Lot 2433,
Cariboo District, Plan 17020.**

BCGS 93J.007

Integrated Survey Area No. 39 Prince George, BC, NAD83 (CSRS) 4.0.0.BC.1



The intended plot size of this plan is 432mm in width by 280mm in height (B size) when plotted at a scale of 1:250.

All distances are in metres and decimals thereof.

Grid bearings are derived from Plan EPP95693.

This plan shows horizontal ground-level distances unless otherwise specified. To compute grid distances, multiply ground-level distances by the average combined factor of 0.9994862 which has been derived from Plan EPP95693.

Note:
Some posts are exaggerated for clarity.

Legend

- Denotes Found Standard Iron Post
- SL Strata Lot
- LCP Limited Common Property for the exclusive use of designated Strata Lot
- (C) Common Property
- HA Habitable Area

Strata Lot boundaries are defined by the centreline of the structural portion of walls and the middle of all ceilings between units.

All decks (LCP) are defined as to height by the centre of the floor above, or its extensions or where there is no floor above by the average height of a strata lot within the same building unless otherwise indicated.

The buildings included in this strata plan have not been previously occupied.

The buildings shown hereon are within the external boundaries of the land that is subject of the strata plan.

The field survey represented by this plan was completed on the 25th day of October, 2019.

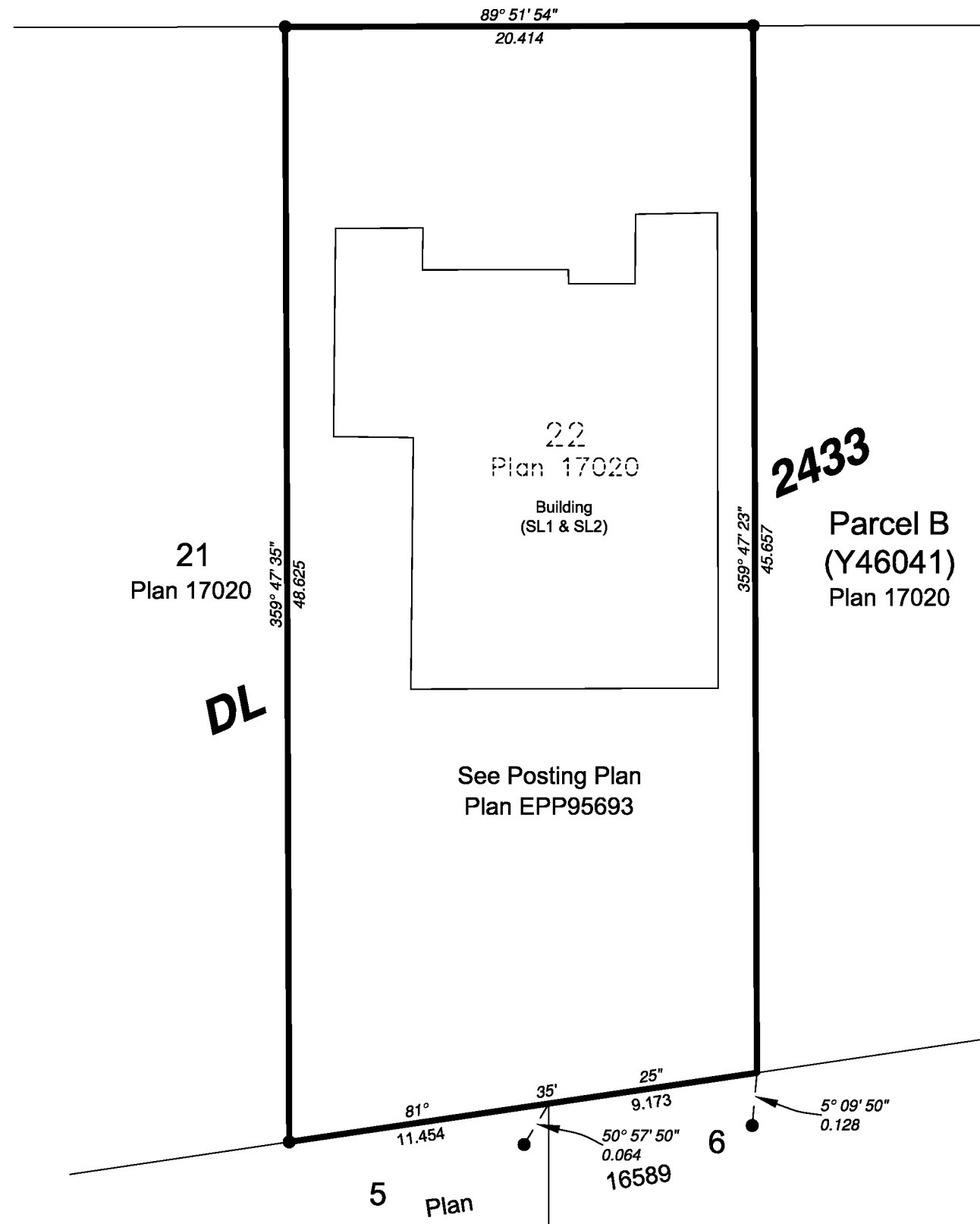
Scott A. Maguire BCLS 903
This plan lies within the Regional District of Fraser-Fort George.
This plan lies within the City of Prince George.

File: 19106-STRATA

Koehler Land Surveying Inc.
1698 Lyon Street
Prince George, BC V2N 1T3
Tel: (250) 614-9703

Knight Crescent

Strata Plan EPS6444
SHEET 1 OF 5



Civic Address:
SL1: 3943 Knight Crescent, Prince George, BC
SL2: 3945 Knight Crescent, Prince George, BC

Scott A. Maguire, BCLS 903
14th day of November, 2019

Building Foundation

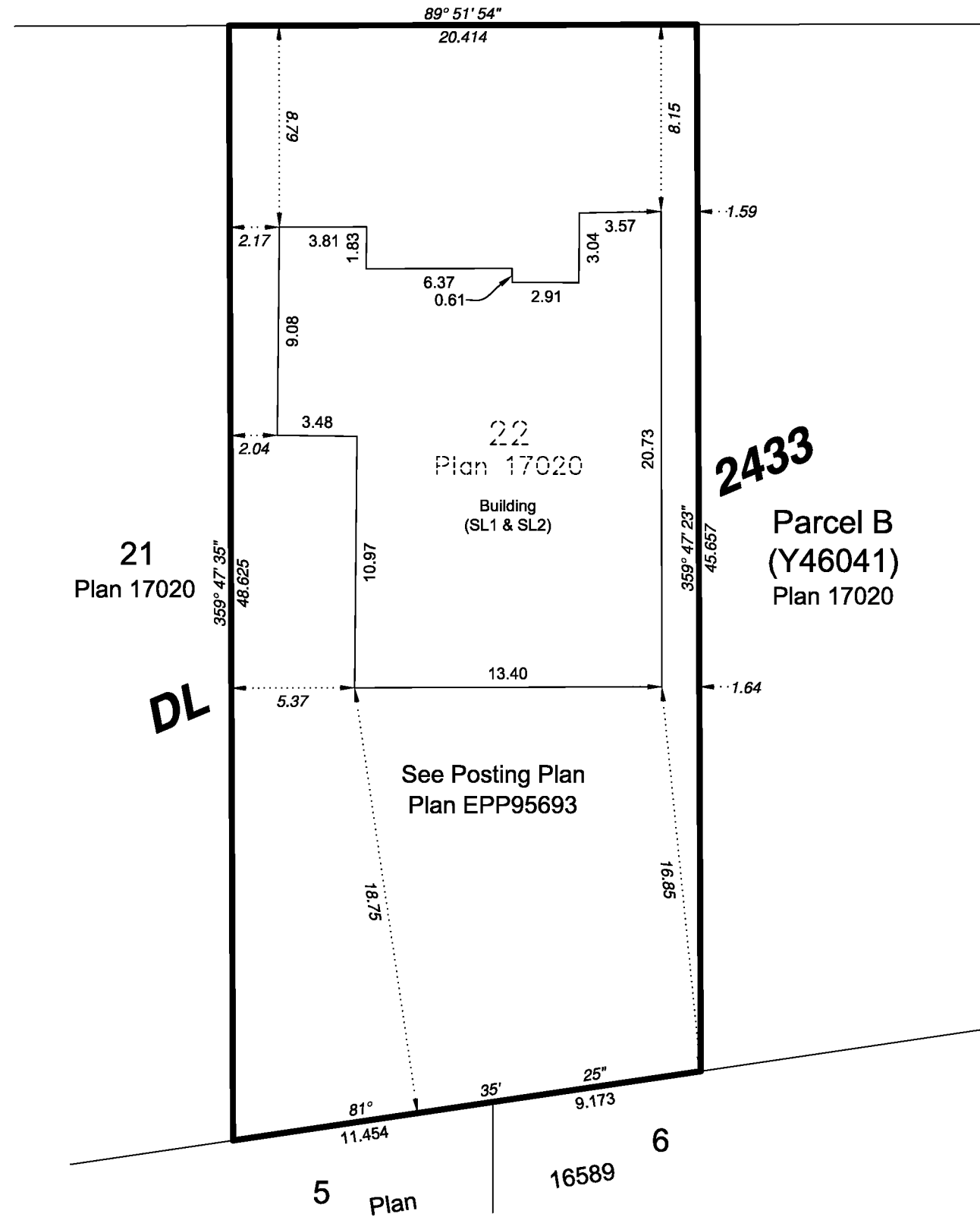
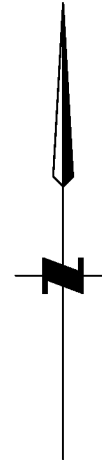


The intended plot size of this plan is 432mm in width by 280mm in height (B size) when plotted at a scale of 1:250.

All distances are in metres and decimals thereof.

Legend

SL Strata Lot



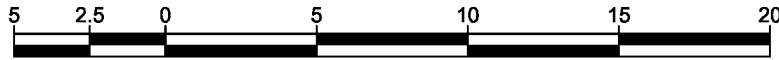
Note: Building dimensions shown on this sheet are shown to the exterior face of styrofoam on ICF foundation. Offsets to property lines are perpendicular thereto and are measured from the outside face of ICF styrofoam.

File: 19106-STRATA

Koehler Land Surveying Inc.
1698 Lyon Street
Prince George, BC V2N 1T3
Tel: (250) 614-9703

Scott A. Maguire, BCLS 903
14th day of November, 2019

Building: Strata Lots 1 and 2 First Floor

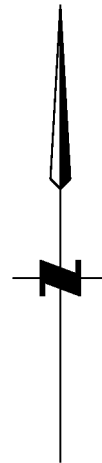


The intended plot size of this plan is 432mm in width by 280mm in height (B size) when plotted at a scale of 1:250.

All distances are in metres and decimals thereof.

Legend

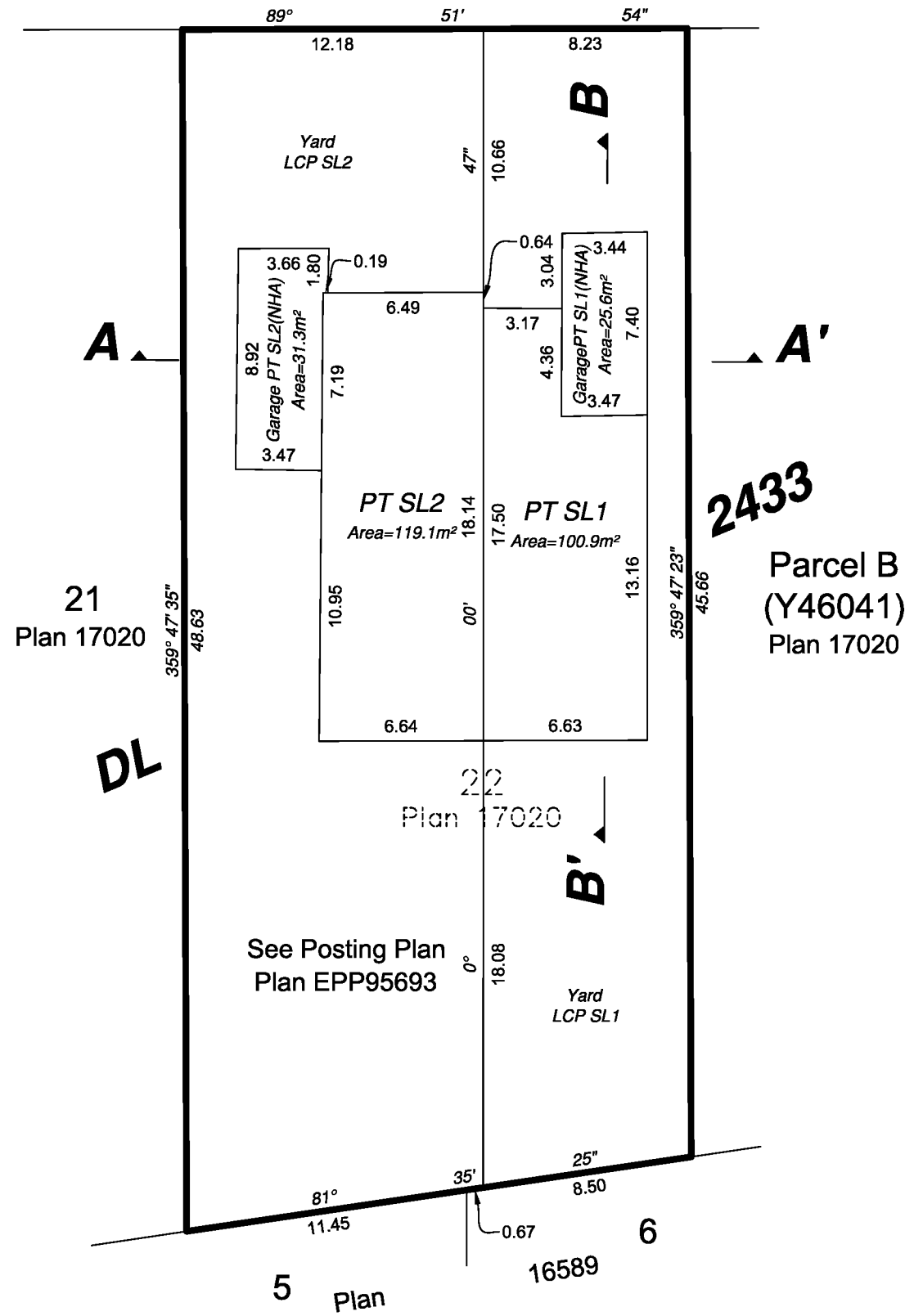
- SL Strata Lot
- LCP Limited Common Property for the exclusive use of designated Strata Lot
- HA Habitable Area
- NHA Non-Habitable Area
- PT Denotes part of



Note: This sheet shows strata lot boundary dimensions to the midpoint of the structural portion of exterior walls and the midpoint between structural portions of the party wall between strata lots.

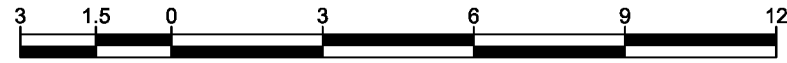
File: 19106-STRATA

Koehler Land Surveying Inc.
1698 Lyon Street
Prince George, BC V2N 1T3
Tel: (250) 614-9703



Building: Strata Lots 1 and 2 Second Floor

Strata Plan EPS6444
Sheet 4 of 5

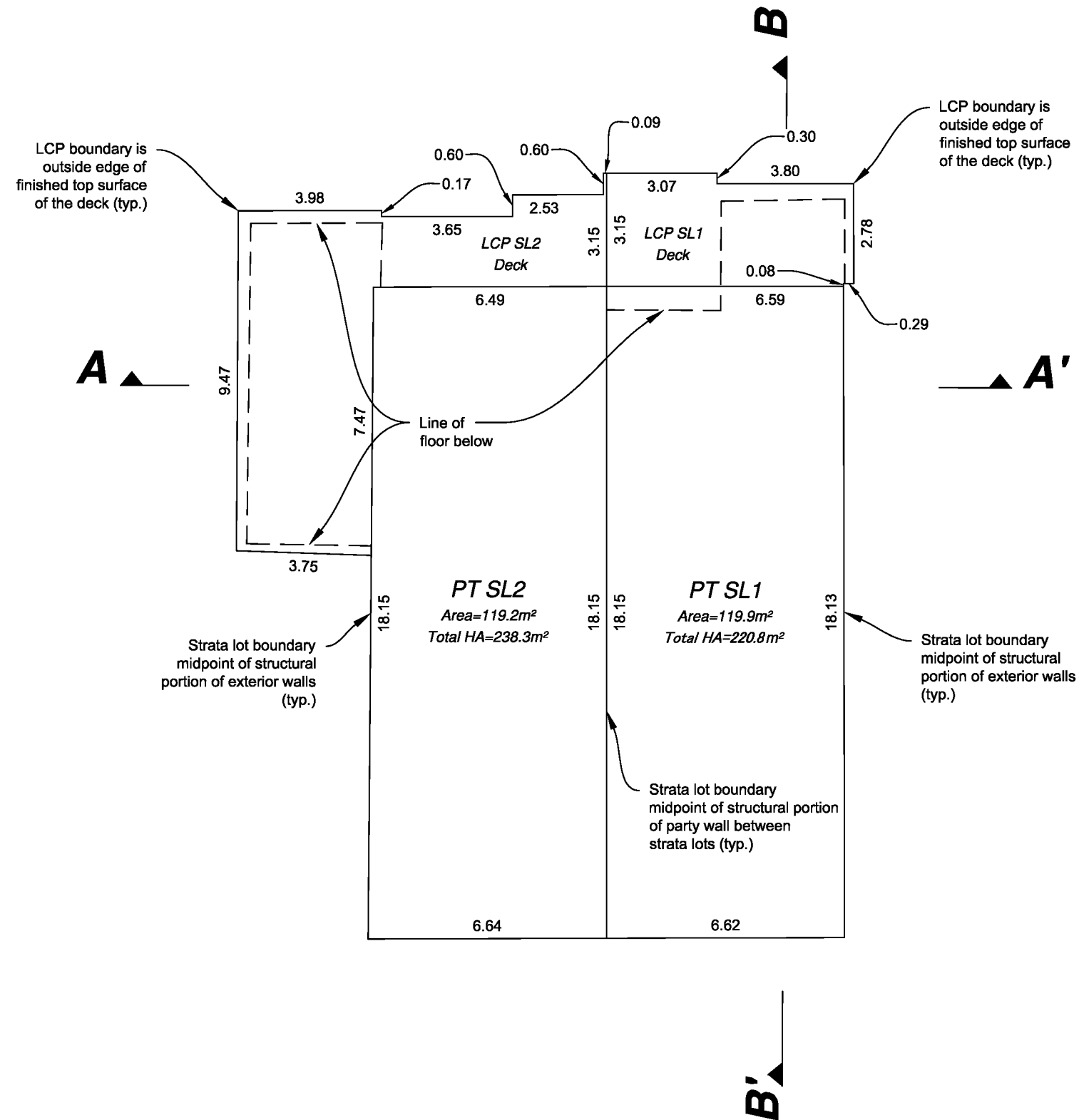
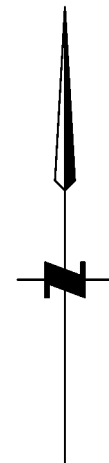


The intended plot size of this plan is 432mm in width by 280mm in height (B size) when plotted at a scale of 1:150.

All distances are in metres and decimals thereof.

Legend

- SL Denotes Strata Lot
- (C) Denotes Common Property
- LCP Denotes Limited Common Property for the exclusive use of designated Strata Lot
- HA Denotes Habitable Area
- PT Denotes part of



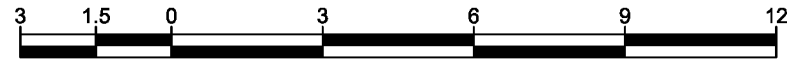
Note: This sheet shows strata lot boundary dimensions to the midpoint of the structural portion of exterior walls and the midpoint between structural portions of the party wall between strata lots.

File: 19106-STRATA
Koehler Land Surveying Inc.
1698 Lyon Street
Prince George, BC V2N 1T3
Tel: (250) 614-9703

Scott A. Maguire, BCLS 903
14th day of November, 2019

Building: Strata Lots 1 and 2 Cross Sections

Strata Plan EPS6444
Sheet 5 of 5

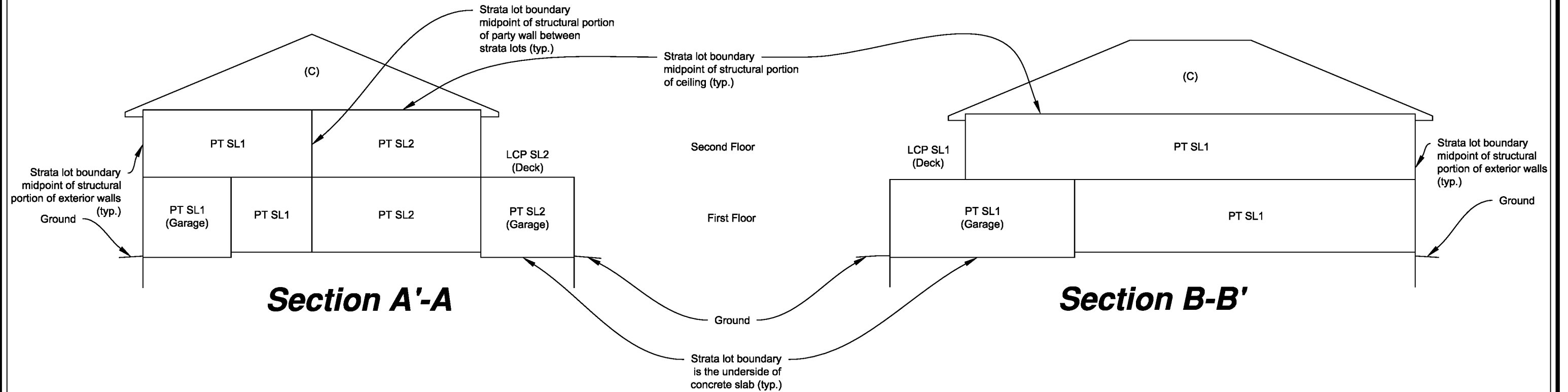


The intended plot size of this plan is 432mm in width by 280mm in height (B size) when plotted at a scale of 1:150.

All distances are in metres and decimals thereof.

Legend

- SL Denotes Strata Lot
- (C) Denotes Common Property
- LCP Denotes Limited Common Property for the exclusive use of designated Strata Lot
- PT Denotes part of



File: 19106-STRATA

Koehler Land Surveying Inc.
1698 Lyon Street
Prince George, BC V2N 1T3
Tel: (250) 614-9703

Scott A. Maguire, BCLS 903
14th day of November, 2019