

**PHASED BARELAND STRATA PLAN OF PART OF LOT A,
DISTRICT LOT 753, CARIBOO DISTRICT, PLAN EPP75658**

PLAN EPS4560
PHASE 1

PURSUANT TO THE STRATA PROPERTY ACT

INTEGRATED SURVEY AREA No. 39 PRINCE GEORGE, BC, NAD83 (CSRS) 4.0.0.BC.1

BCGS 93G.087



THE INTENDED PLOT SIZE OF THIS PLAN IS 560mm IN WIDTH BY 864mm IN HEIGHT (D SIZE) WHEN PLOTTED AT A SCALE OF 1:500.

ALL DISTANCES ARE IN METRES AND DECIMALS THEREOF.

GRID BEARINGS ARE DERIVED FROM PLAN EPP75658 AND ARE REFERRED TO THE CENTRAL MERIDIAN OF UTM ZONE 10 (123° WEST LONGITUDE)

THE UTM COORDINATES AND ESTIMATED HORIZONTAL POSITIONAL ACCURACY ACHIEVED DERIVED FROM TIES TO FOUND IRON POSTS SET ON PLAN EPP75658

THIS PLAN SHOWS HORIZONTAL GROUND-LEVEL DISTANCES UNLESS OTHERWISE SPECIFIED. TO COMPUTE GRID DISTANCES, MULTIPLY GROUND-LEVEL DISTANCES BY THE AVERAGE COMBINED FACTOR OF 0.9999508 WHICH HAS BEEN DERIVED FROM CONTROL MONUMENT 86H1824

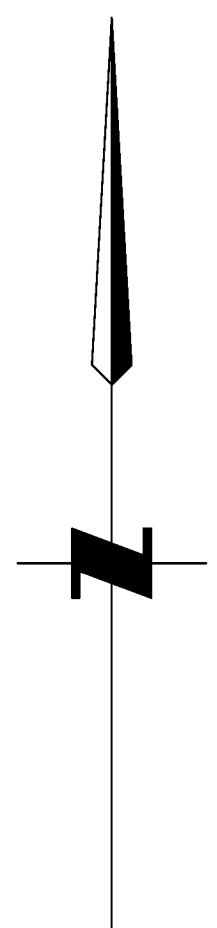
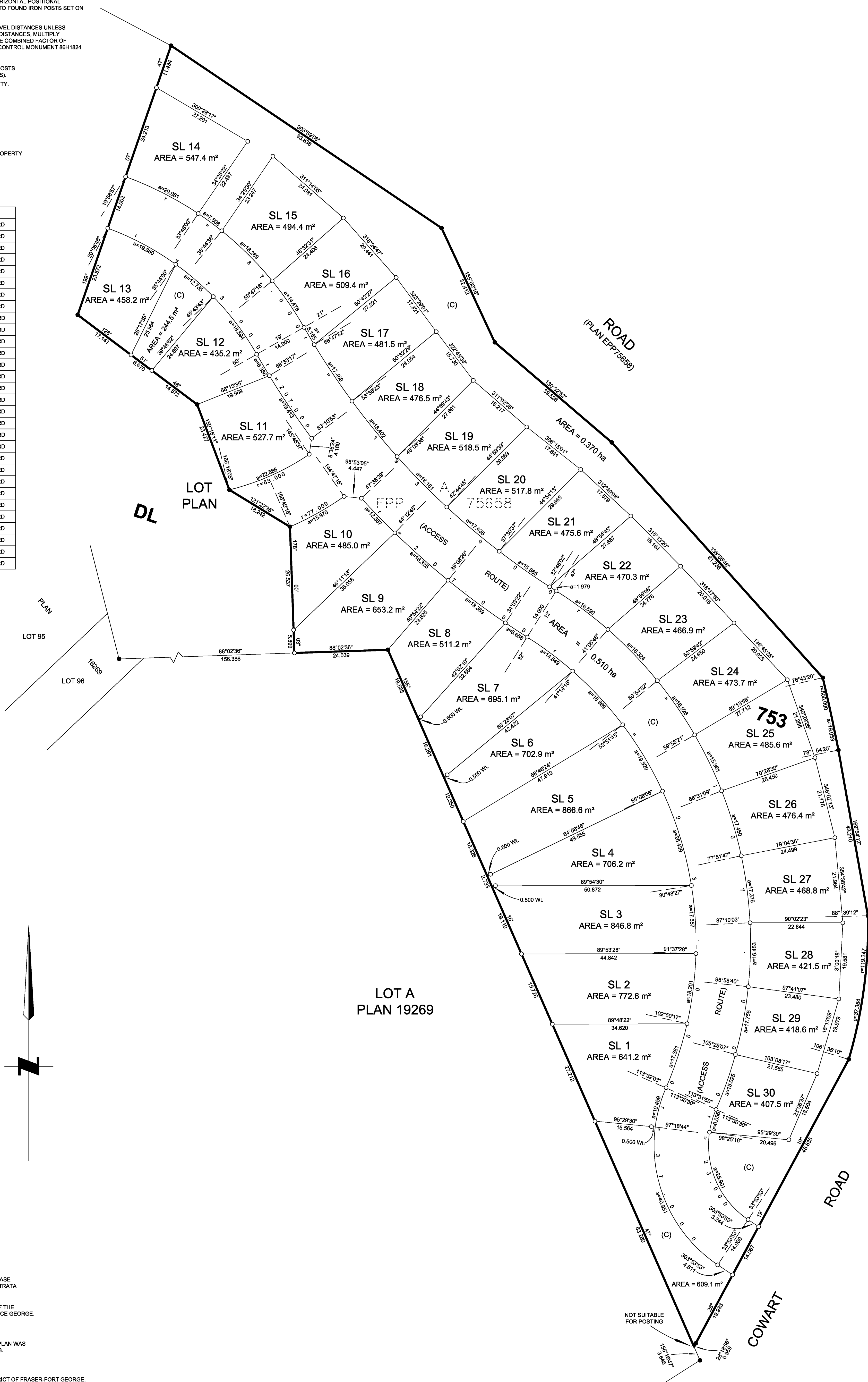
NOTE:
THIS PLAN SHOWS ONE OR MORE WITNESS POSTS WHICH ARE NOT SET ON THE TRUE CORNER(S).
SOME POSTS ARE EXAGGERATED FOR CLARITY.

LEGEND

SYMBOLS	DESCRIPTION
○	FOUND PLACED
●	STANDARD IRON POST
(C)	DENOTES COMMON PROPERTY

CIVIC ADDRESSES:

SL 1	105 - 4393 COWART RD
SL 2	115 - 4393 COWART RD
SL 3	125 - 4393 COWART RD
SL 4	135 - 4393 COWART RD
SL 5	155 - 4393 COWART RD
SL 6	165 - 4393 COWART RD
SL 7	175 - 4393 COWART RD
SL 8	185 - 4393 COWART RD
SL 9	205 - 4393 COWART RD
SL 10	215 - 4393 COWART RD
SL 11	305 - 4393 COWART RD
SL 12	315 - 4393 COWART RD
SL 13	335 - 4393 COWART RD
SL 14	340 - 4393 COWART RD
SL 15	330 - 4393 COWART RD
SL 16	320 - 4393 COWART RD
SL 17	310 - 4393 COWART RD
SL 18	300 - 4393 COWART RD
SL 19	210 - 4393 COWART RD
SL 20	200 - 4393 COWART RD
SL 21	190 - 4393 COWART RD
SL 22	180 - 4393 COWART RD
SL 23	170 - 4393 COWART RD
SL 24	160 - 4393 COWART RD
SL 25	150 - 4393 COWART RD
SL 26	140 - 4393 COWART RD
SL 27	130 - 4393 COWART RD
SL 28	120 - 4393 COWART RD
SL 29	110 - 4393 COWART RD
SL 30	100 - 4393 COWART RD



THIS PLAN IS PHASE ONE (1) OF A TWO (2) PHASE STRATA PLAN UNDER SECTION 224 OF THE STRATA PROPERTY ACT.

THIS PLAN LIES WITHIN THE JURISDICTION OF THE APPROVING OFFICER FOR THE CITY OF PRINCE GEORGE.

CPG FILE NO.: SD100534

THE FIELD SURVEY REPRESENTED BY THIS PLAN WAS COMPLETED ON THE 27TH DAY OF JULY, 2018.

ALBERT KOEHLER, BCLS 974

THIS PLAN LIES WITHIN THE REGIONAL DISTRICT OF FRASER-FORT GEORGE.

FILE: 20170029 - BLS
KOEHLER LAND SURVEYING INC.
1688 LYON STREET SOUTH
PRINCE GEORGE, BC V2N 1T3
TEL: (250) 614-9703