

STRATA PLAN OF LOT 1, DISTRICT LOT 2014, CARIBOO DISTRICT, PLAN EPP5390

BCGS 93G.087



The intended plot size of this plan is 432mm in width by 280mm in height (B size) when plotted at a scale of 1:750.

All distances are in metres and decimals thereof.

Integrated Survey Area No. 39, City of Prince George, NAD83 (CSRS) 4.0.0.BC.1.

Grid bearings are derived from Plan EPP5390.

This plan shows horizontal ground-level distances unless otherwise specified. To compute grid distances, multiply ground-level distances by the average combined factor of 0.9995088 which has been derived from Plan EPP5390.

This plan shows one or more witness posts which are not set on the true corner(s).

NOTE: Habitable area does not include garages or ground level storage.

LEGEND

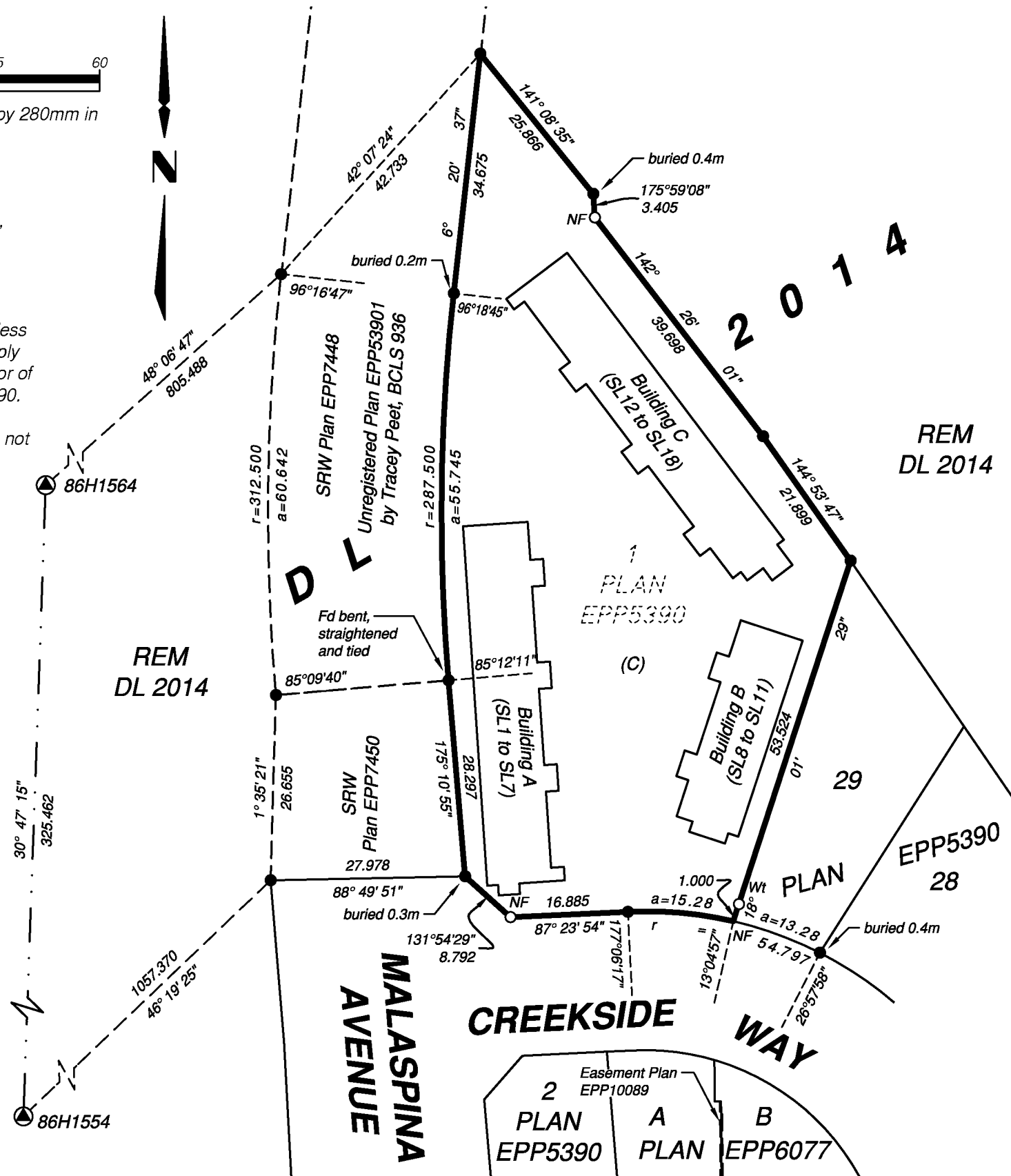
- ⊙ denotes control monument found
- denotes standard iron post found
- denotes standard iron post placed
- (C) denotes common property
- SL denotes strata lot
- LCP denotes limited common property

Civic Address:
7400 Creekside Way

This plan lies within the City of Prince George.

All building angles are multiples of 45° unless otherwise noted.

Building ties are from the building foundation at ground level perpendicular to property lines unless otherwise shown.



86H1554
UTM Zone 10 North
Datum: NAD83(CSRS) 4.0.0.BC.1
UTM Northing: 5966764.906
UTM Easting: 515466.841
Point Combined Factor: 0.9995083
Estimated Horizontal Positional Accuracy: 0.13m

86H1564
UTM Zone 10 North
Datum: NAD83(CSRS) 4.0.0.BC.1
UTM Northing: 5967044.363
UTM Easting: 515633.349
Point Combined Factor: 0.9995088
Estimated Horizontal Positional Accuracy: 0.13m

Strata lot boundaries are defined by the centre line of structural portion of walls.

Patios and balconies are defined by outermost edge of surface.

All patios and balconies are defined as to height by the centre of the floor above or its extensions, or where there is no floor above, by the average height of a strata lot within the same building unless otherwise indicated.

See Sheets 2, 3 and 4 for building perimeter dimensions.

This plan lies within the Regional District of Fraser-Fort George and the City of Prince George.

The buildings included in this strata plan have not been previously occupied.

The buildings shown hereon are within the external boundaries of the land that is the subject of the Strata Plan.

The field survey represented by this plan was completed on the 26th day of February, 2016.

Tracey Peet, BCLS 936



WSP Surveys (BC) Limited Partnership
780-3rd Avenue, Prince George, BC

PROJECT REF./DRAWING No.
010053397-SCSU01-R01

BUILDING A - LOCATION PLAN

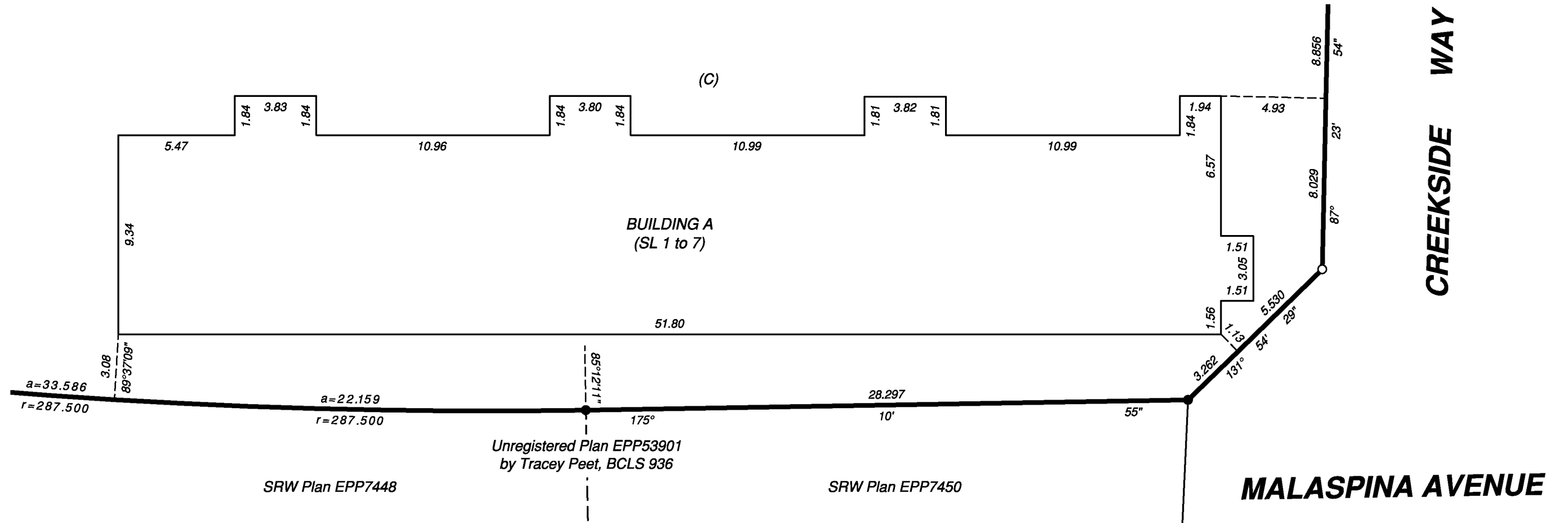
Sheet 2 of 16 Sheets

EPS3416



The intended plot size of this plan is 432mm in width by 280mm in height (B size) when plotted at a scale of 1:200.

All distances are in metres and decimals thereof.



2016/04/14 - 14:17 S:\PrinceGeorge\010053397\CAD\Working\010053397-SCSU\01-R01.dwg



WSP Surveys (BC) Limited Partnership
780-3rd Avenue, Prince George, BC

PROJECT REF./DRAWING No.
010053397-SCSU01-R01

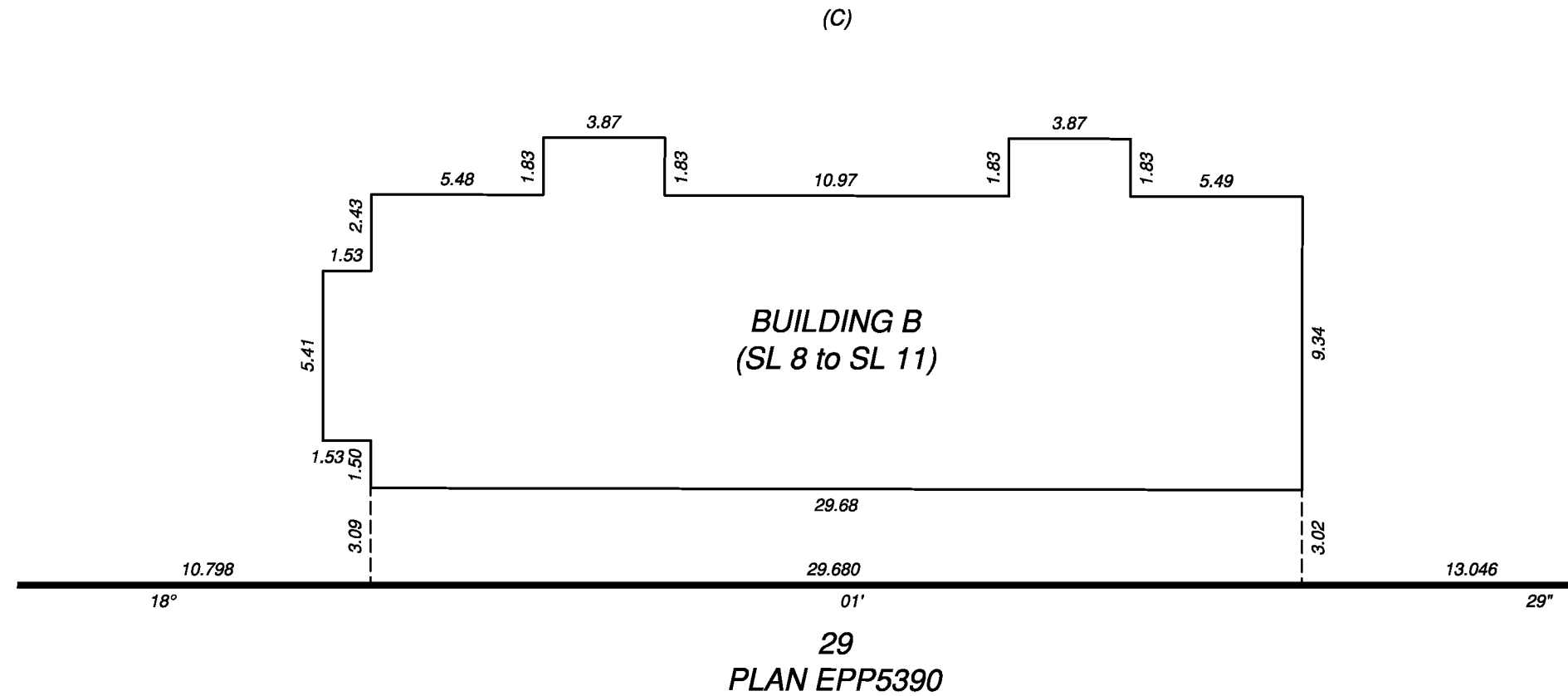
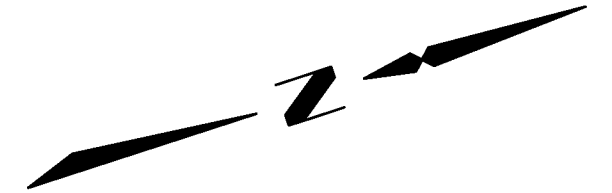
Tracey Peet, BCLS 936
April 14, 2016

BUILDING B - LOCATION PLAN



The intended plot size of this plan is 432mm in width by 280mm in height (B size) when plotted at a scale of 1:200.

All distances are in metres and decimals thereof.



2016/04/14 - 14:18 S:\PrinceGeorge\010053397\CAD\Working\010053397-SCSU01-R01.dwg



WSP Surveys (BC) Limited Partnership
780-3rd Avenue, Prince George, BC

PROJECT REF./DRAWING No.
010053397-SCSU01-R01

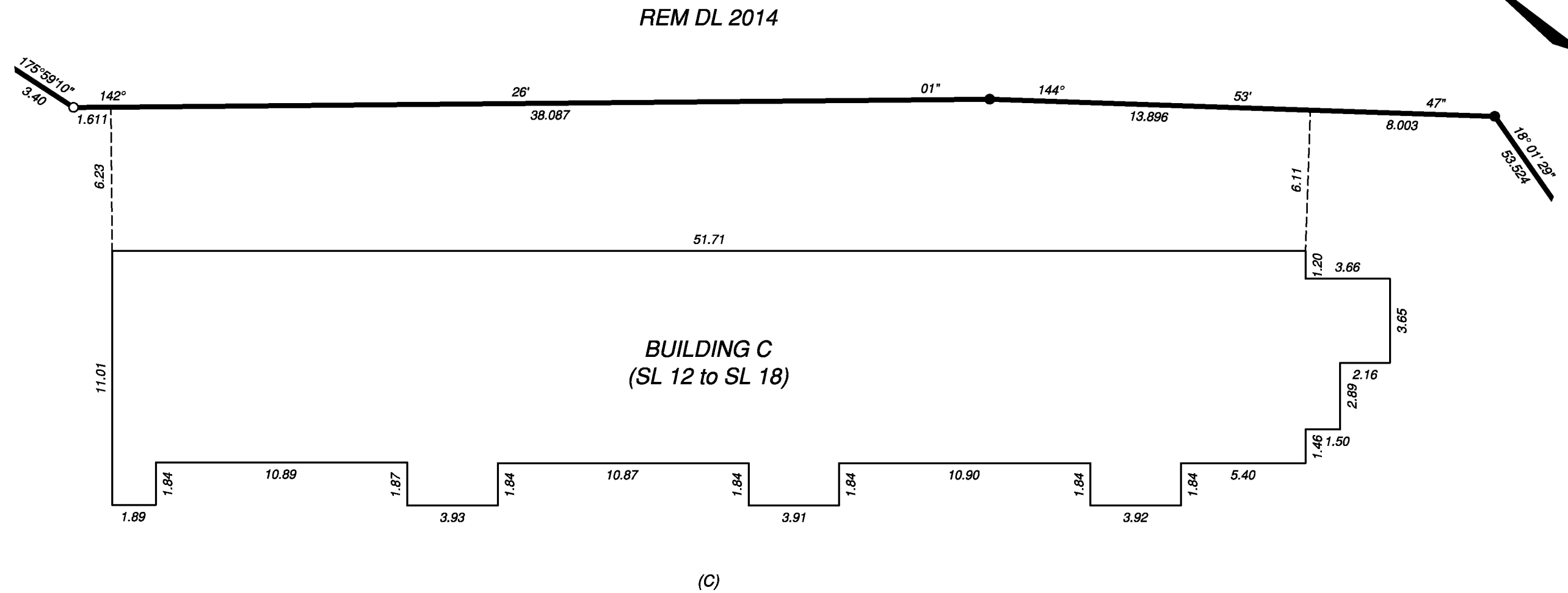
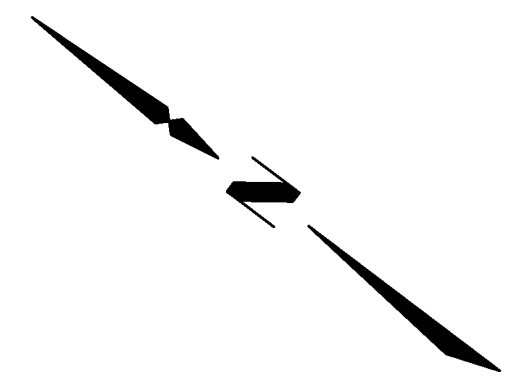
Tracey Peet, BCLS 936
April 14, 2016

BUILDING C - LOCATION PLAN



The intended plot size of this plan is 432mm in width by 280mm in height (B size) when plotted at a scale of 1:200.

All distances are in metres and decimals thereof.



2016/04/14 - 14:19 S:\PrinceGeorge\010053397\CAD\Working\010053397-SCSU01-R01.dwg



WSP Surveys (BC) Limited Partnership
780-3rd Avenue, Prince George, BC

PROJECT REF./DRAWING No.
010053397-SCSU01-R01

Tracey Peet, BCLS 936
April 14, 2016

BUILDING A - GROUND LEVEL SL's 1 TO 7 INCLUSIVE

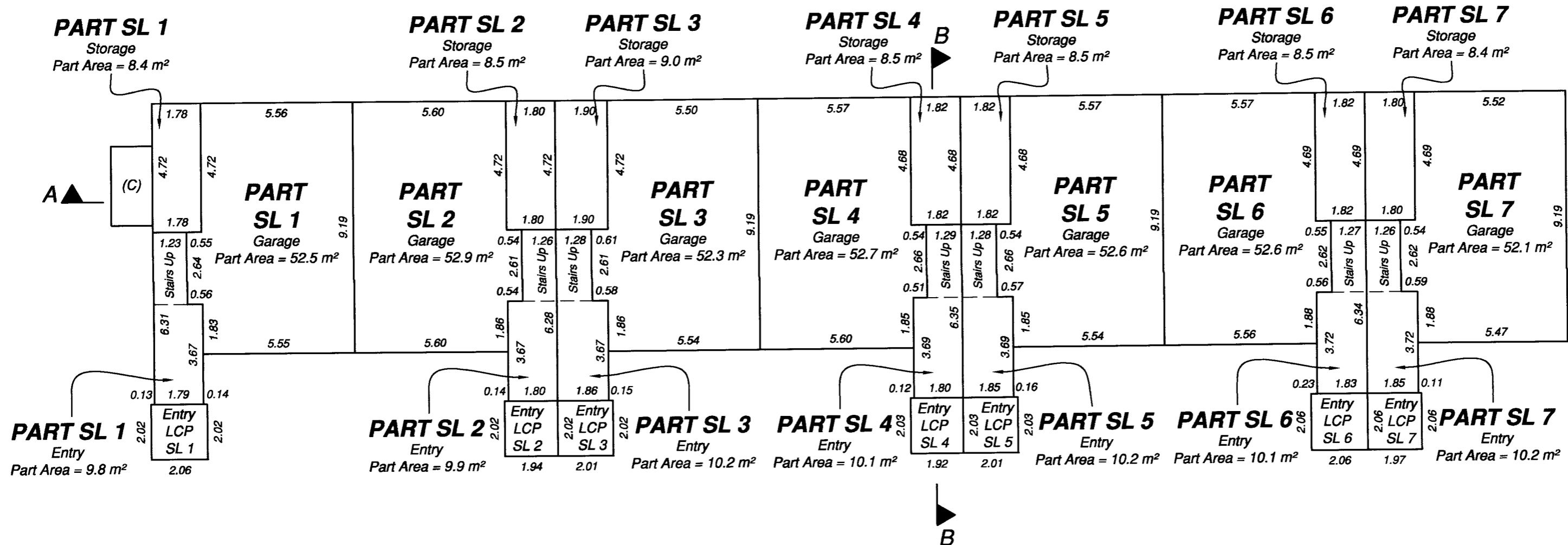
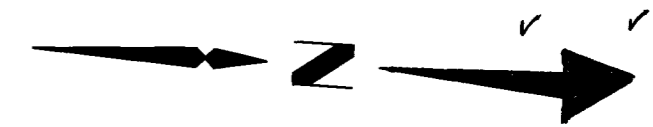
Corrected this 4 day of Aug 2016
See CAS401261
C. MacDonald per kv
Registrar

EPS3416



The intended plot size of this plan is 432mm in width by 280mm in height (B size) when plotted at a scale of 1:150.

All distances are in metres and decimals thereof.



2016/04/14 14:20 S:\PrinceGeorge\010053397\CAD\Working\010053397-SCSU01-R01.dwg



WSP Surveys (BC) Limited Partnership
780-3rd Avenue, Prince George, BC

PROJECT REF./DRAWING No.
010053397-SCSU01-R01

Tracey Peet, BCLS 936
April 14, 2016

BUILDING A - MAIN LEVEL SL's 1 TO 7 INCLUSIVE

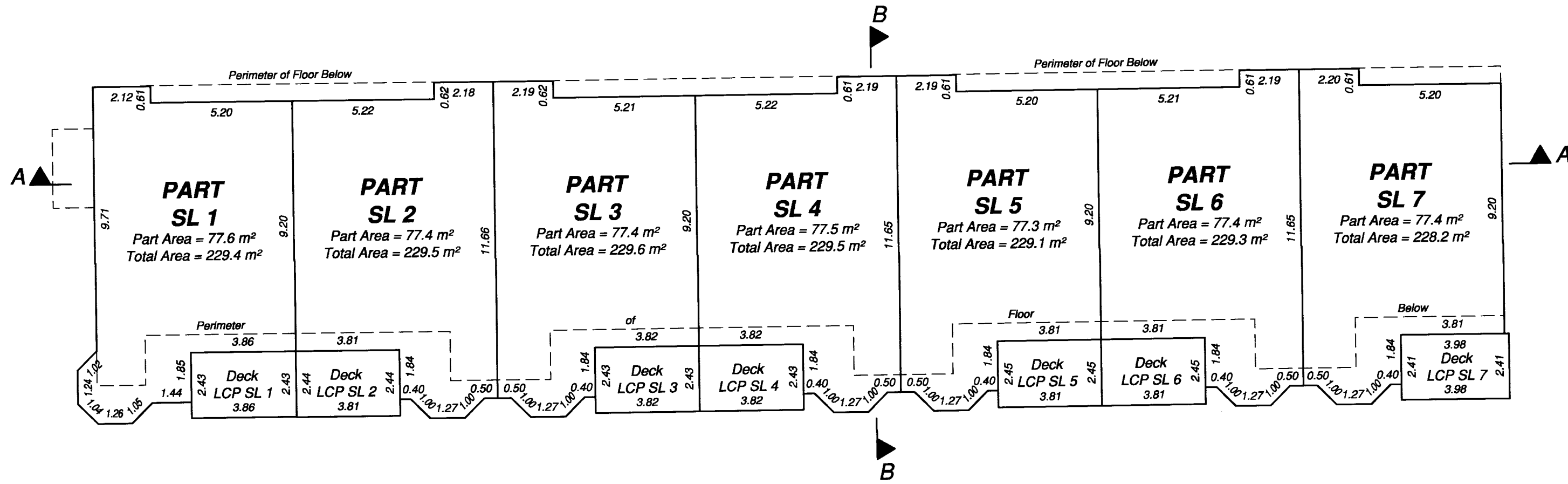
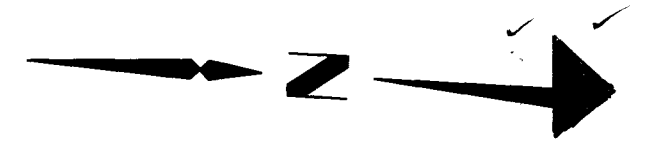
EPS3416

Corrected this 4 day of Aug 2016
See CA5401261
C. MacDonald per KV
Registrar



The intended plot size of this plan is 432mm in width by 280mm in height (B size) when plotted at a scale of 1:150.

All distances are in metres and decimals thereof.



2016/04/14 - 14:26 S:\PrinceGeorge\010053397\CAD\Working\010053397-SCSU01-R01.dwg



WSP Surveys (BC) Limited Partnership
780-3rd Avenue, Prince George, BC

PROJECT REF./DRAWING No.
010053397-SCSU01-R01

Tracey Peet, BCLS 936
April 14, 2016

BUILDING A - SECOND LEVEL SL's 1 TO 7 INCLUSIVE

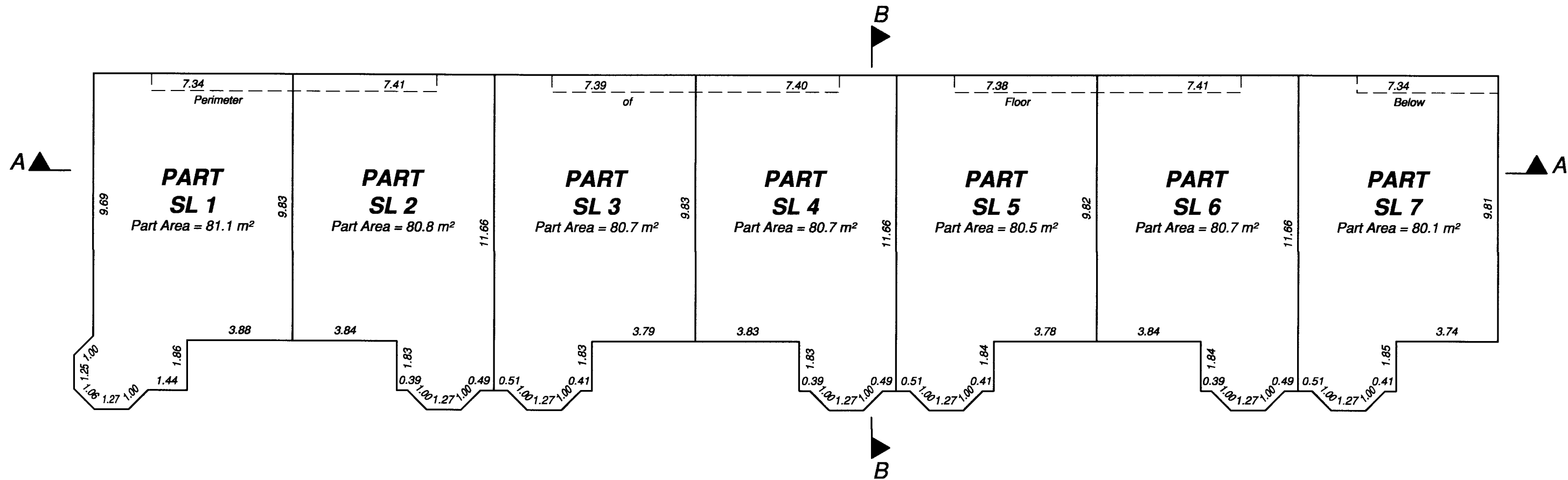
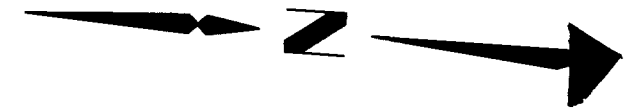
EPS3416

Corrected this 4 day of Aug 2016
See CAS401261
C. MacDonald per KV
Registrar



The intended plot size of this plan is 432mm in width by 280mm in height (B size) when plotted at a scale of 1:150.

All distances are in metres and decimals thereof.



2016/04/14 - 14:22 S:\PrinceGeorge\010053397\CAD\Working\010053397-SCSU01-R01.dwg



WSP Surveys (BC) Limited Partnership
780-3rd Avenue, Prince George, BC

PROJECT REF./DRAWING No.
010053397-SCSU01-R01

Tracey Peet, BCLS 936

April 14, 2016

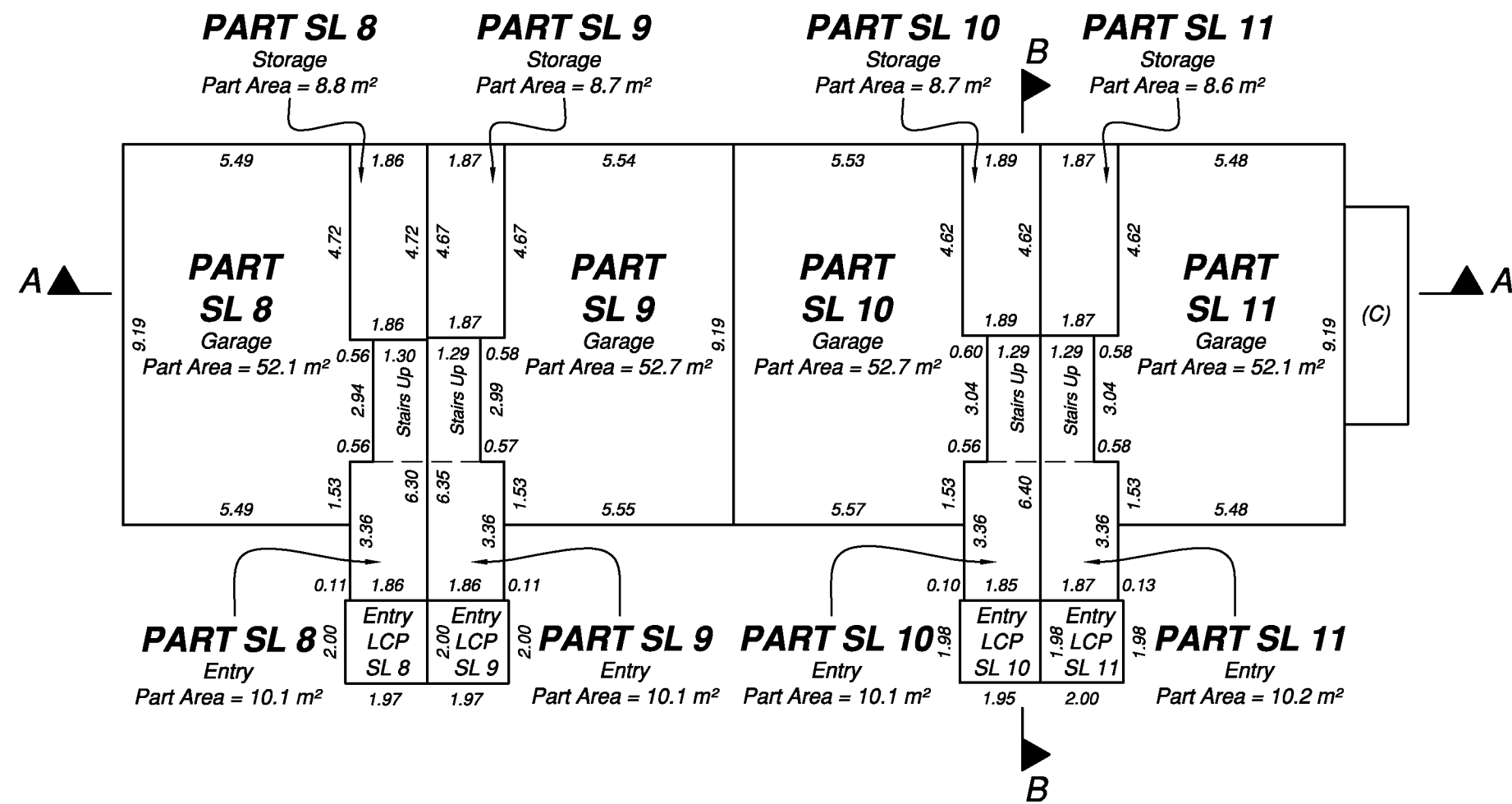
BUILDING B - GROUND LEVEL SL's 8 TO 11 INCLUSIVE

EPS3416



The intended plot size of this plan is 432mm in width by 280mm in height (B size) when plotted at a scale of 1:150.

All distances are in metres and decimals thereof.



2016/04/14 - 14:23 S:\PrinceGeorge\010053397\CAD\Working\010053397-SCSU01-R01.dwg



WSP Surveys (BC) Limited Partnership
780-3rd Avenue, Prince George, BC

PROJECT REF./DRAWING No.
010053397-SCSU01-R01

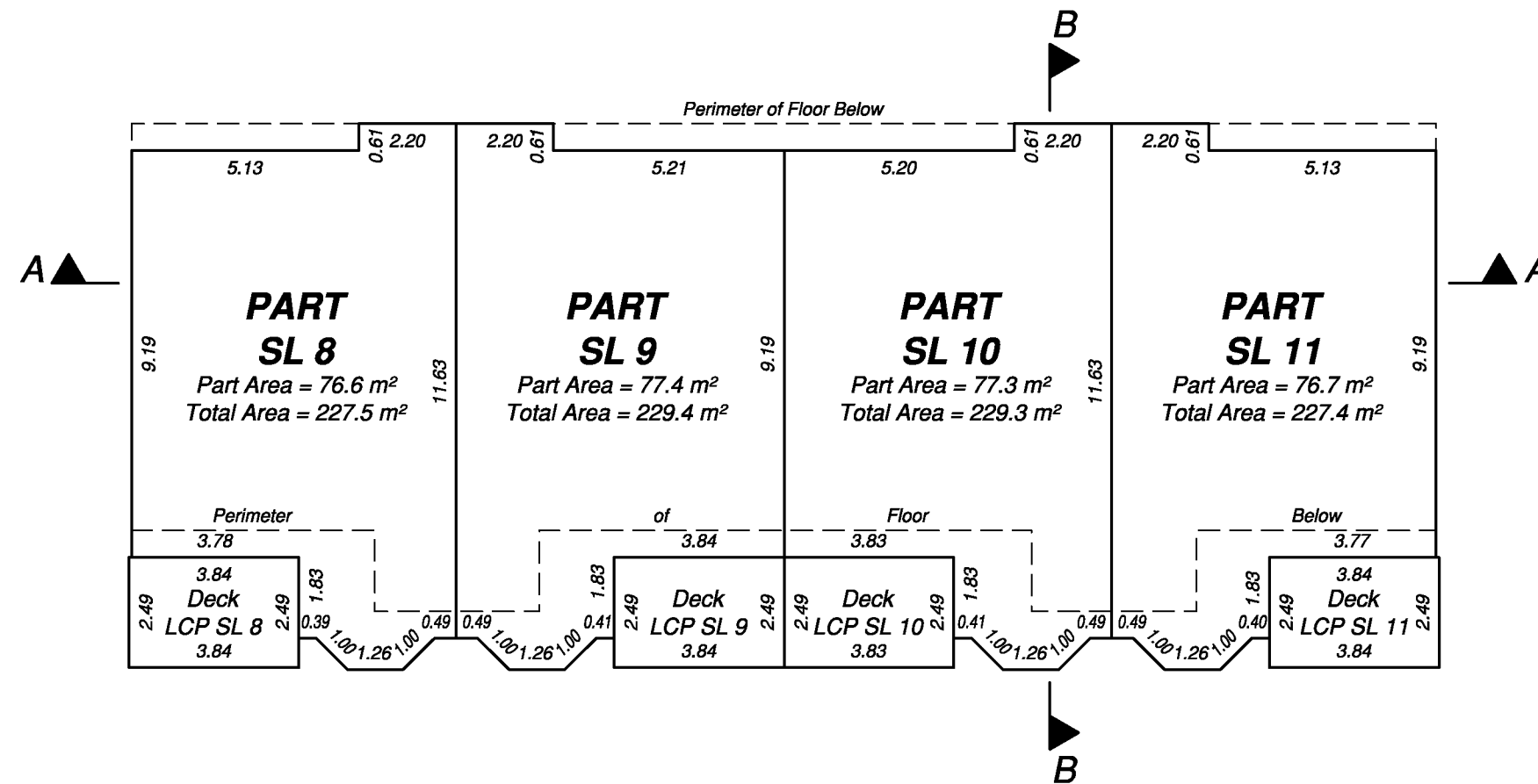
Tracey Peet, BCLS 936
April 14, 2016

**BUILDING B - MAIN LEVEL
SL's 8 TO 11 INCLUSIVE**



The intended plot size of this plan is 432mm in width by 280mm in height (B size) when plotted at a scale of 1:150.

All distances are in metres and decimals thereof.



2016/04/14 - 14:23 S:\PrinceGeorge\010053397\CAD\Working\010053397-SCSU01-R01.dwg



WSP Surveys (BC) Limited Partnership
780-3rd Avenue, Prince George, BC

PROJECT REF./DRAWING No.
010053397-SCSU01-R01

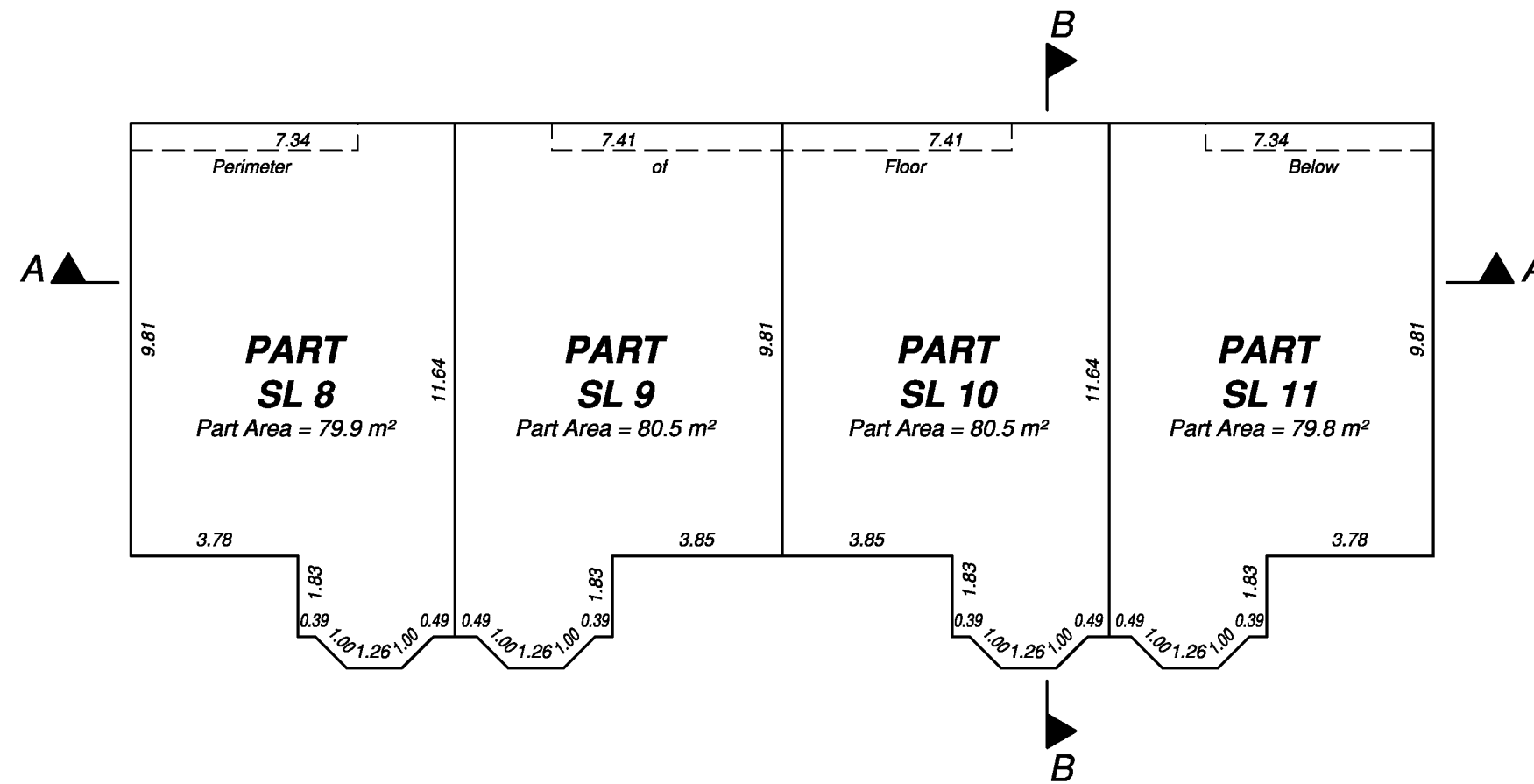
Tracey Peet, BCLS 936
April 14, 2016

**BUILDING B - SECOND LEVEL
SL's 8 TO 11 INCLUSIVE**



The intended plot size of this plan is 432mm in width by 280mm in height (B size) when plotted at a scale of 1:150.

All distances are in metres and decimals thereof.



2016/04/14 - 14:24 S:\PrinceGeorge\010053397\CAD\Working\010053397-SCSU01-R01.dwg



WSP Surveys (BC) Limited Partnership
780-3rd Avenue, Prince George, BC

PROJECT REF./DRAWING No.
010053397-SCSU01-R01

Tracey Peet, BCLS 936
April 14, 2016

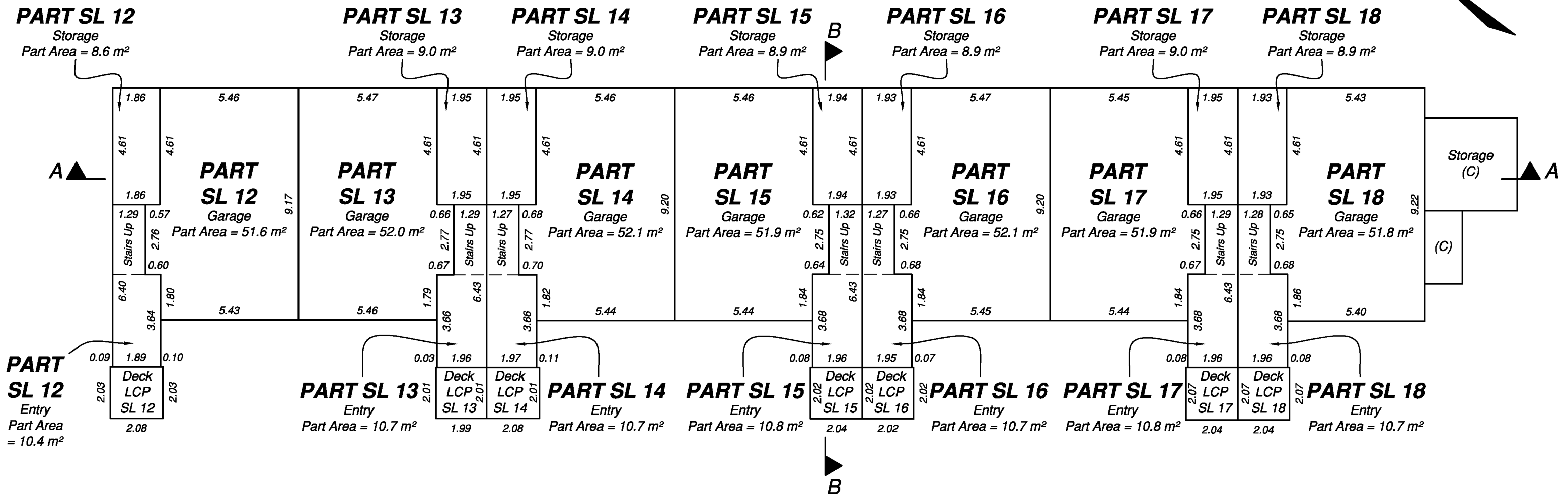
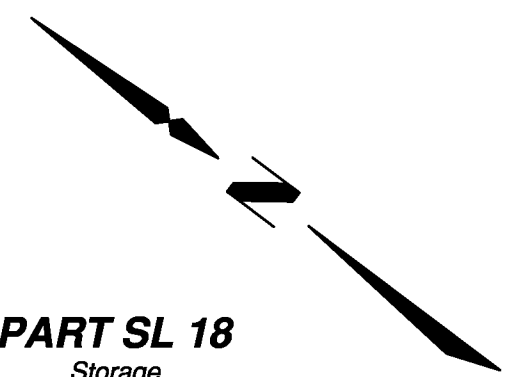
BUILDING C - GROUND LEVEL SL's 12 TO 18 INCLUSIVE

EPS3416



The intended plot size of this plan is 432mm in width by 280mm in height (B size) when plotted at a scale of 1:150.

All distances are in metres and decimals thereof.



2016/04/14 - 14:27 S:\PrinceGeorge\010053397\CAD\Working\010053397-SCSU01-R01.dwg



WSP Surveys (BC) Limited Partnership
780-3rd Avenue, Prince George, BC

PROJECT REF./DRAWING No.
010053397-SCSU01-R01

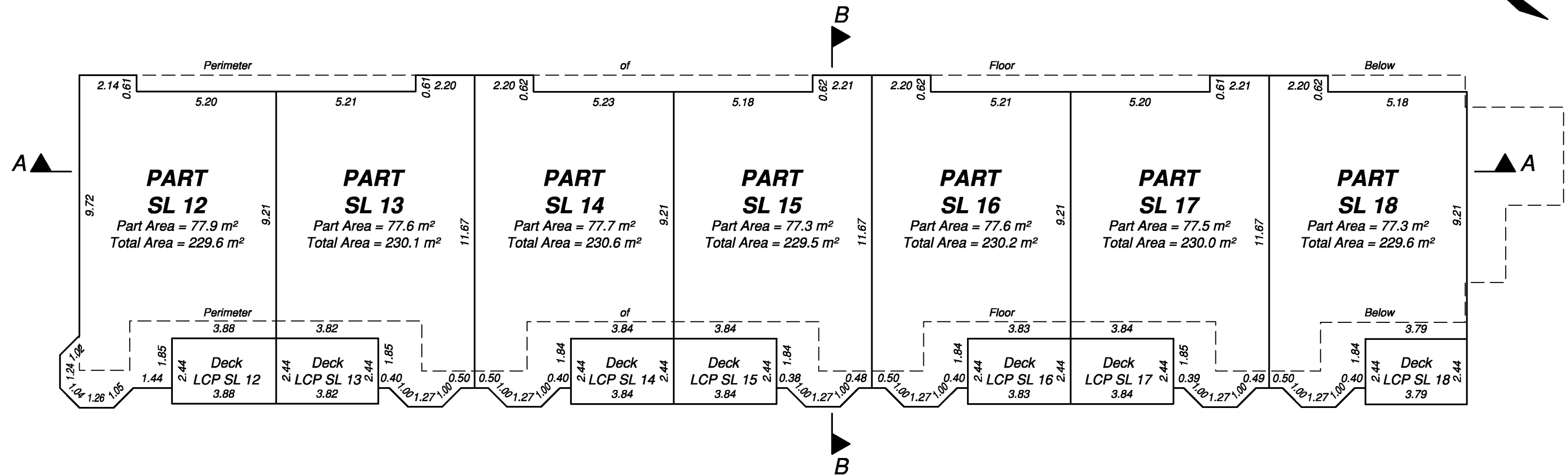
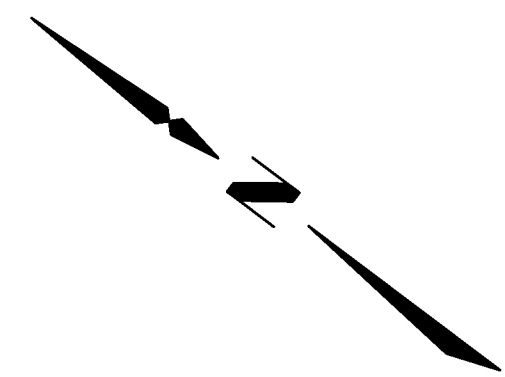
Tracey Peet, BCLS 936
April 14, 2016

BUILDING C - MAIN LEVEL SL's 12 TO 18 INCLUSIVE



The intended plot size of this plan is 432mm in width by 280mm in height (B size) when plotted at a scale of 1:150.

All distances are in metres and decimals thereof.



2016/04/14 - 14:29 S:\PrinceGeorge\010053397\CAD\Working\010053397-SCSU01-R01.dwg



WSP Surveys (BC) Limited Partnership
780-3rd Avenue, Prince George, BC

PROJECT REF./DRAWING No.
010053397-SCSU01-R01

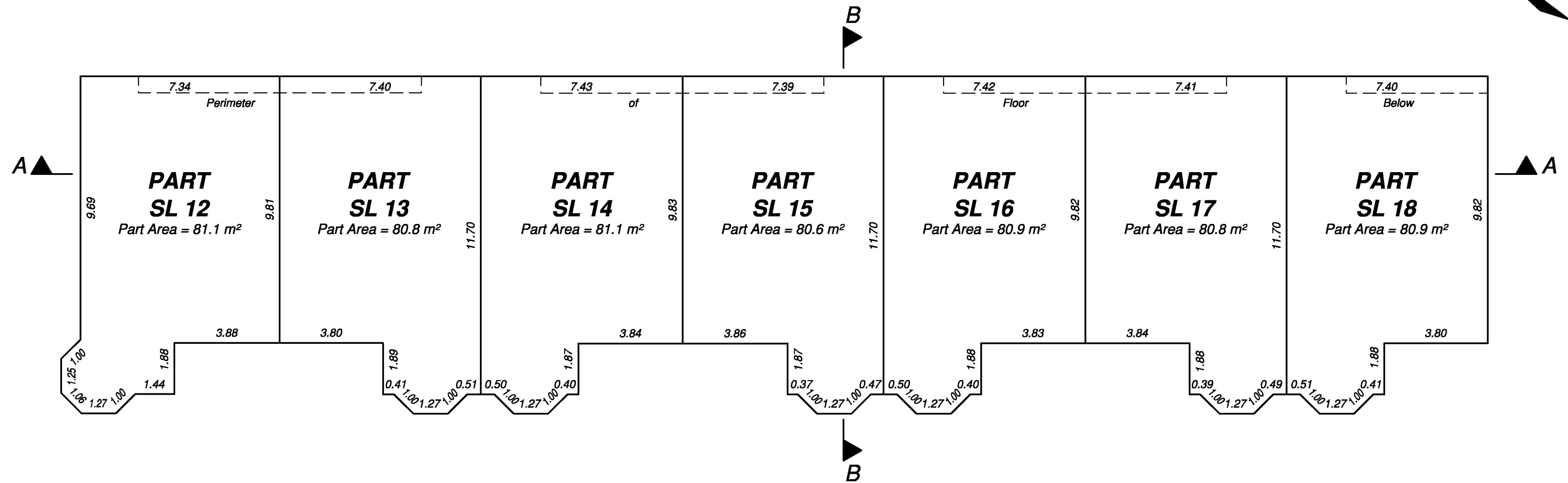
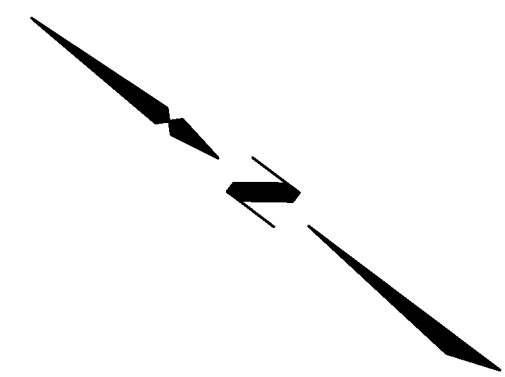
Tracey Peet, BCLS 936
April 14, 2016

BUILDING C - SECOND LEVEL SL's 12 TO 18 INCLUSIVE



The intended plot size of this plan is 432mm in width by 280mm in height (B size) when plotted at a scale of 1:150.

All distances are in metres and decimals thereof.



2016/04/14 - 14:29 S:\PrinceGeorge\010053397\CAD\Working\010053397-SCSU01-R01.dwg



WSP Surveys (BC) Limited Partnership
780-3rd Avenue, Prince George, BC

PROJECT REF./DRAWING No.
010053397-SCSU01-R01

Tracey Peet, BCLS 936
April 14, 2016

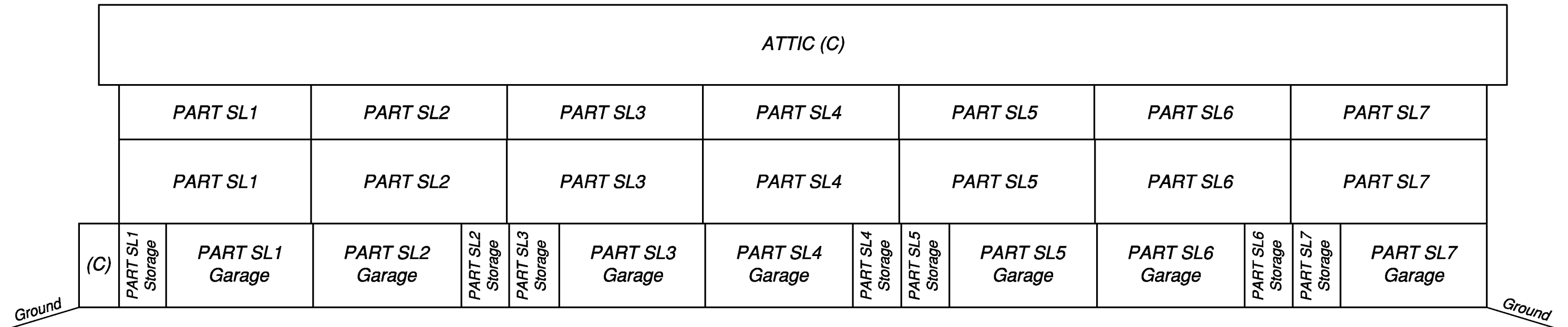
BUILDING A - SECTIONS SL's 1 TO 7 INCLUSIVE

EPS3416

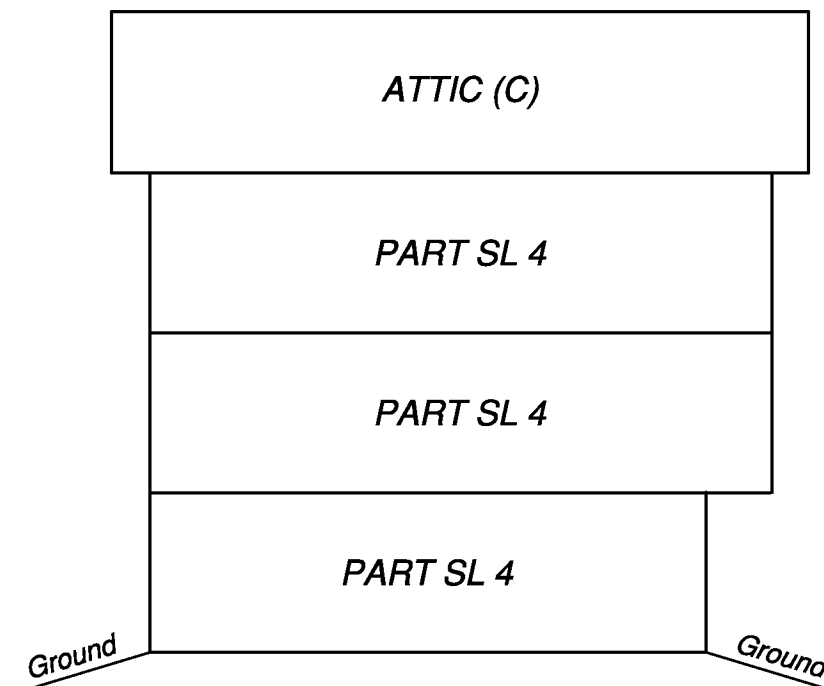


The intended plot size of this plan is 432mm in width by 280mm in height (B size) when plotted at a scale of 1:150.

All distances are in metres and decimals thereof.



SECTION A-A



SECTION B-B



WSP Surveys (BC) Limited Partnership
780-3rd Avenue, Prince George, BC

PROJECT REF./DRAWING No.
010053397-SCSU01-R01

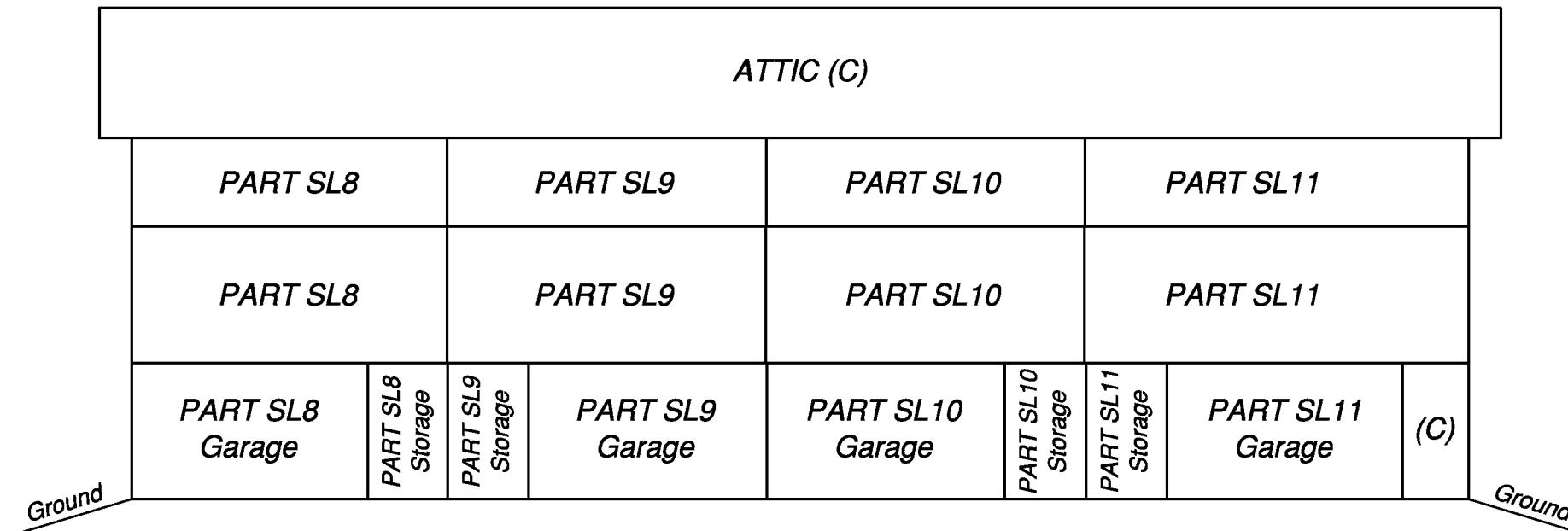
Tracey Peet, BCLS 936
April 14, 2016

BUILDING B - SECTIONS SL's 8 TO 11 INCLUSIVE

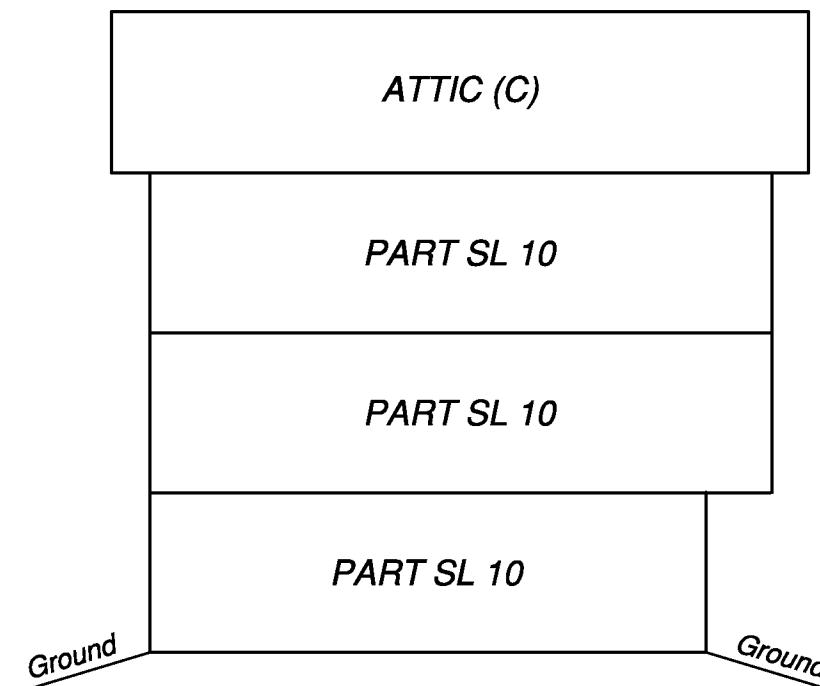


The intended plot size of this plan is 432mm in width by 280mm in height (B size) when plotted at a scale of 1:150.

All distances are in metres and decimals thereof.



SECTION A-A



SECTION B-B

S:\PrinceGeorge\010053397\CAD\Working\010053397-SCSU01-R01.dwg 2016/04/14 - 14:31



WSP Surveys (BC) Limited Partnership
780-3rd Avenue, Prince George, BC

PROJECT REF./DRAWING No.
010053397-SCSU01-R01

Tracey Peet, BCLS 936
April 14, 2016

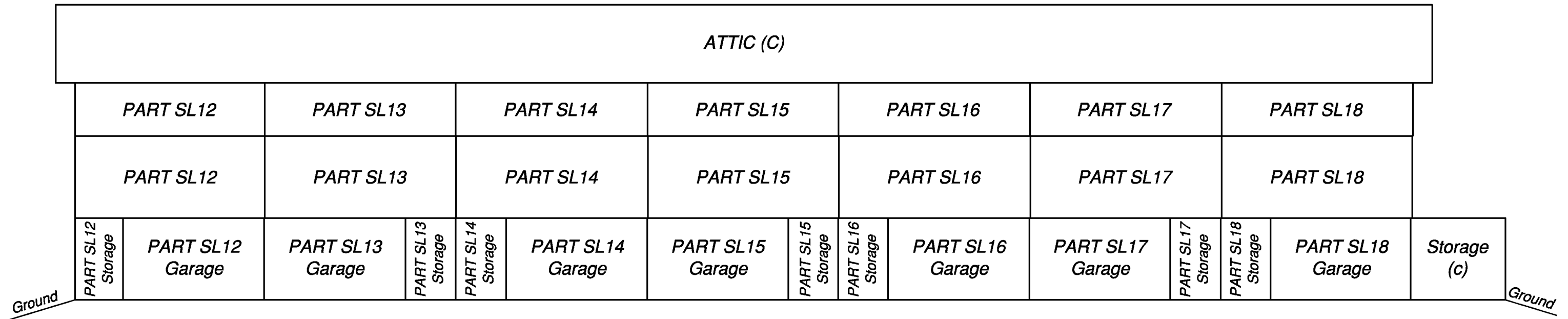
BUILDING C - SECTIONS SL's 12 TO 18 INCLUSIVE

EPS3416

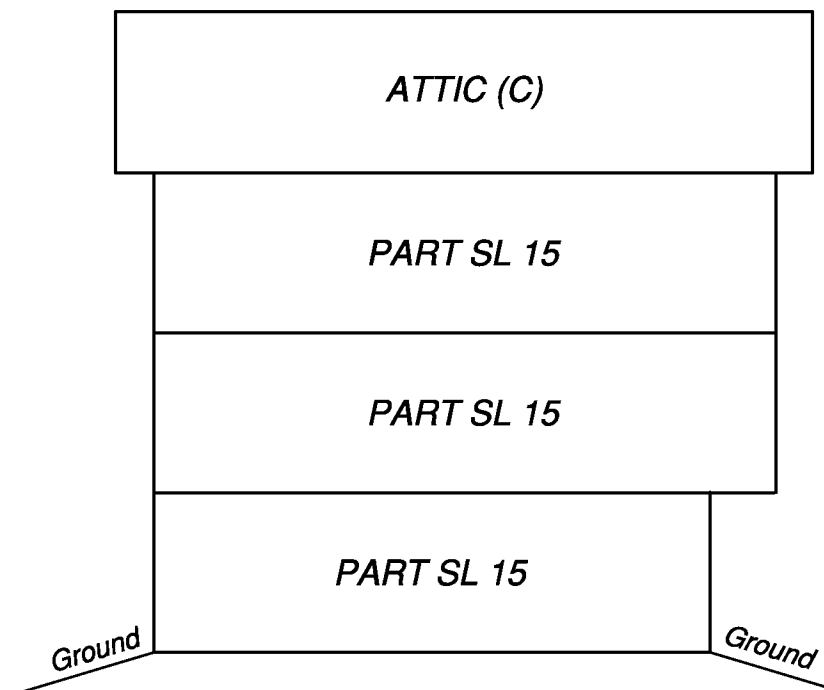


The intended plot size of this plan is 432mm in width by 280mm in height (B size) when plotted at a scale of 1:150.

All distances are in metres and decimals thereof.



SECTION A-A



SECTION B-B



WSP Surveys (BC) Limited Partnership
780-3rd Avenue, Prince George, BC

PROJECT REF./DRAWING No.
010053397-SCSU01-R01

Tracey Peet, BCLS 936
April 14, 2016