

# STRATA PLAN OF LOT 21, DISTRICT LOT 2014, CARIBOO DISTRICT, PLAN EPP5390

Sheet 1 of 5 Sheets

## STRATA PLAN EPS3221

BCGS 93G.087



The intended plot size of this plan is 432mm in width by 280mm in height (B size) when plotted at a scale of 1:250.

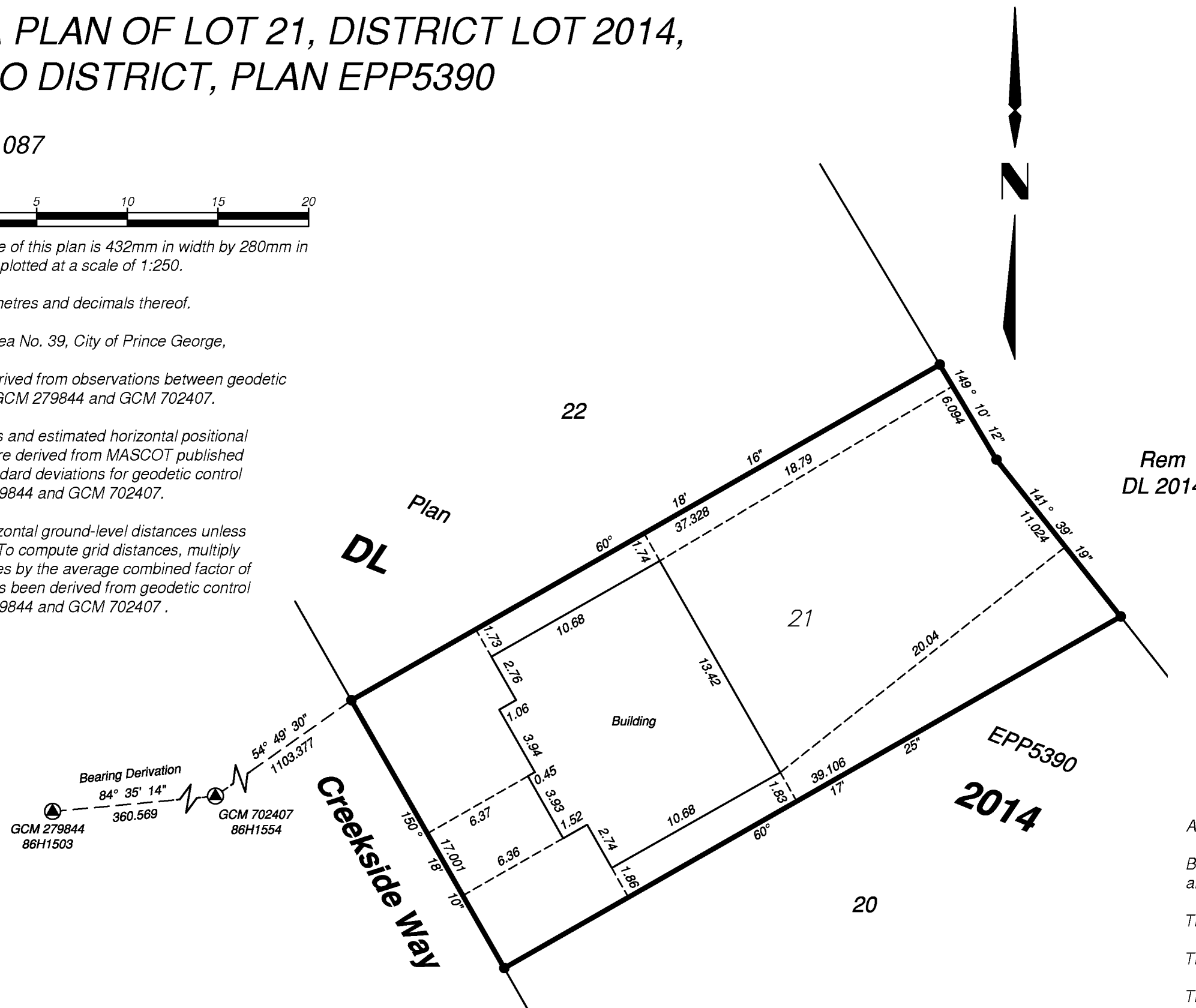
All distances are in metres and decimals thereof.

Integrated Survey Area No. 39, City of Prince George,

Grid Bearings are derived from observations between geodetic control monuments GCM 279844 and GCM 702407.

The UTM coordinates and estimated horizontal positional accuracy achieved are derived from MASCOT published coordinates and standard deviations for geodetic control monuments GCM 279844 and GCM 702407.

This plan shows horizontal ground-level distances unless otherwise specified. To compute grid distances, multiply ground-level distances by the average combined factor of 0.9995136 which has been derived from geodetic control monuments GCM 279844 and GCM 702407.



**LEGEND**

- ⊙ denotes control monument found
- denotes standard iron post found
- SL denotes strata lot
- LCP denotes limited common property
- Pt denotes part of

All building angles are multiples of 90° unless otherwise noted.

Building ties are from the exterior of the sheathing near ground level and are perpendicular to property lines unless otherwise shown.

This plan lies within the Regional District of Fraser-Fort George.

This plan lies within the City of Prince George.

The building included in this strata plan has not been previously occupied.

The building shown hereon is within the external boundaries of the land that is the subject of the Strata Plan.

The field survey represented by this plan was completed on the 13th day of October, 2015.

Richard Redfern, BCLS 525

GCM 279844  
 UTM Zone 10North  
 Datum: NAD83(CSRS) 4.0.0.BC.1  
 UTM Northing: 5966730.91  
 UTM Easting: 515108.05  
 Point Combined Factor: 0.9995068  
 Estimated Horizontal Positional Accuracy: 0.05m

GCM 702407  
 UTM Zone 10North  
 Datum: NAD83(CSRS) 4.0.0.BC.1  
 UTM Northing: 5966764.91  
 UTM Easting: 515466.84  
 Point Combined Factor: 0.9995083  
 Estimated Horizontal Positional Accuracy: 0.05m

Civic Address:

- SL 1 - 7540 Creekside Way,  
Prince George, BC, V2N 0C2
- SL 2 - 7544 Creekside Way,  
Prince George, BC, V2N 0C2



WSP Surveys (BC) Limited Partnership  
 780-3rd Avenue, Prince George, BC

PROJECT REF./DRAWING No.  
 010054567-SLSU01-R00

# GROUND FLOOR LEVEL

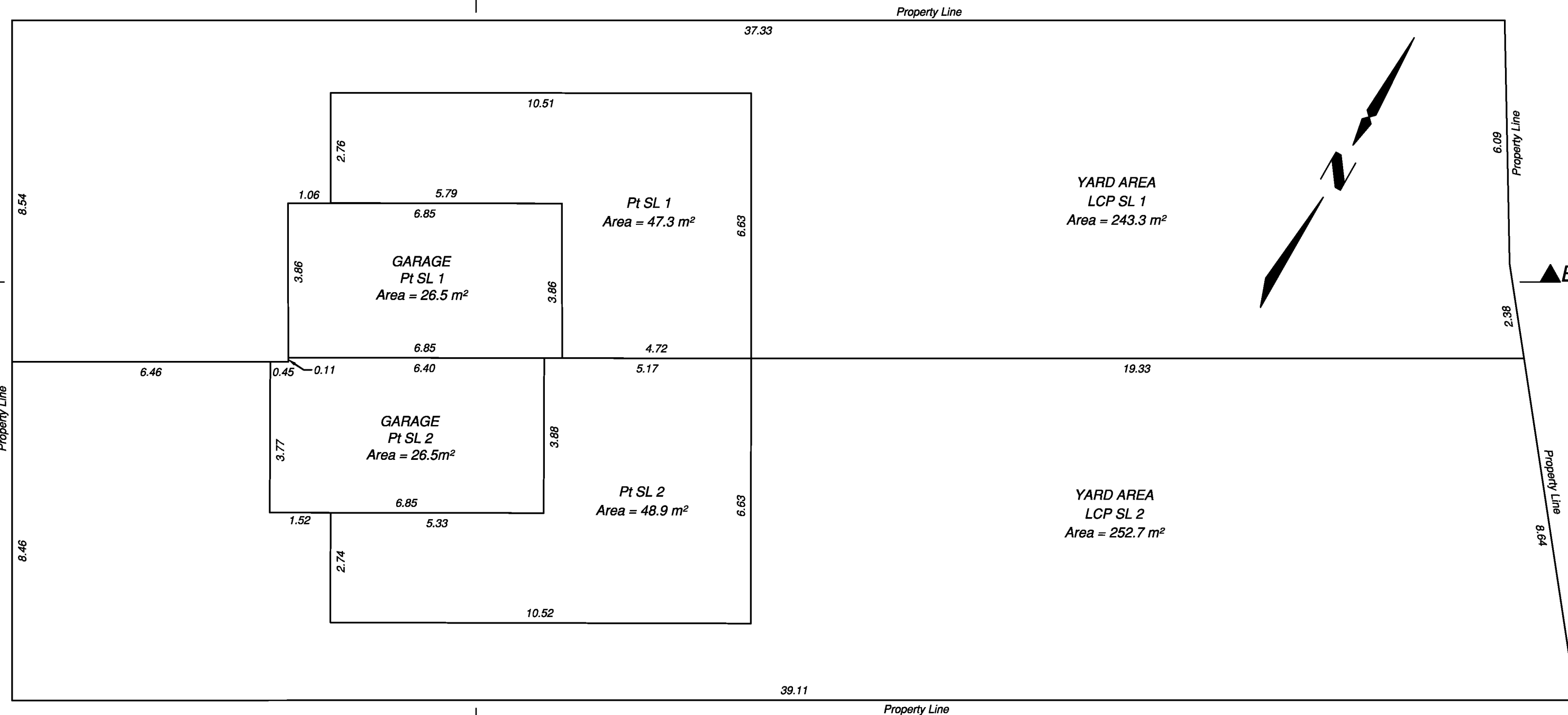
Sheet 2 of 5 Sheets

## STRATA PLAN EPS3221



The intended plot size of this plan is 432mm in width by 280mm in height (B size) when plotted at a scale of 1:100.

All distances are in metres and decimals thereof.



C:\Redfern\01 Projects\010054567\FORTWOOD\CAD\010054567\_SLSU01-R00.dwg 2015/11/04 - 16:00



WSP Surveys (BC) Limited Partnership  
780-3rd Avenue, Prince George, BC

PROJECT REF./DRAWING No.  
010054567-SLSU01-R00

Richard Redfern, BCLS 525  
October 29, 2015

# SECOND FLOOR LEVEL

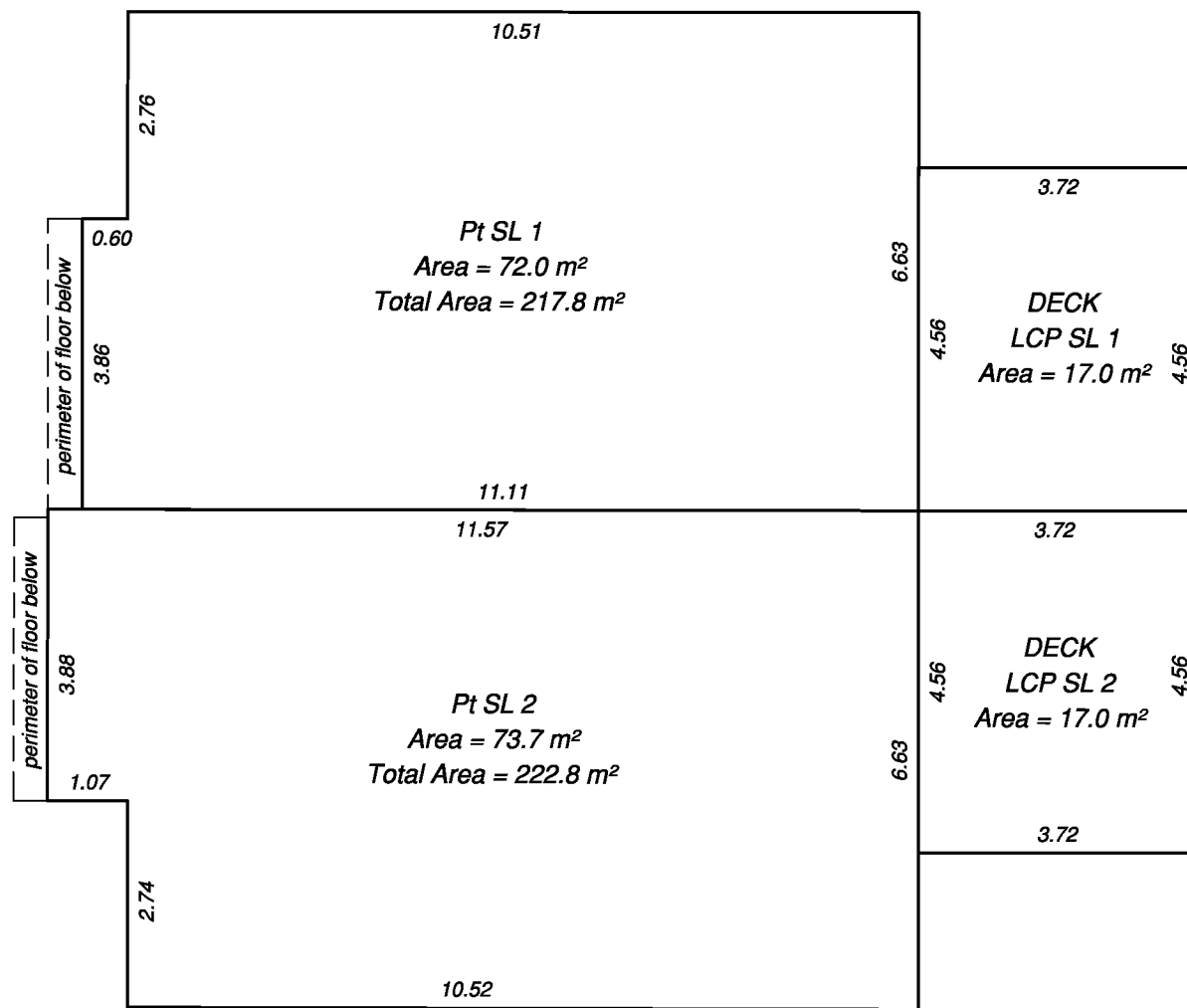
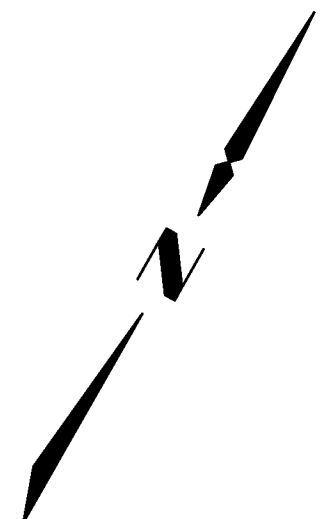
Sheet 3 of 5 Sheets

## STRATA PLAN EPS3221



The intended plot size of this plan is 432mm in width by 280mm in height (B size) when plotted at a scale of 1:100.

All distances are in metres and decimals thereof.



C:\Redfern\01 Projects\010054567\FORTWOOD\CAD\010054567\_SLSU01-R00.dwg 2015/10/29 - 13:54



WSP Surveys (BC) Limited Partnership  
780-3rd Avenue, Prince George, BC

PROJECT REF./DRAWING No.  
010054567-SLSU01-R00

Richard Redfern, BCLS 525  
October 29, 2015

# THIRD FLOOR LEVEL

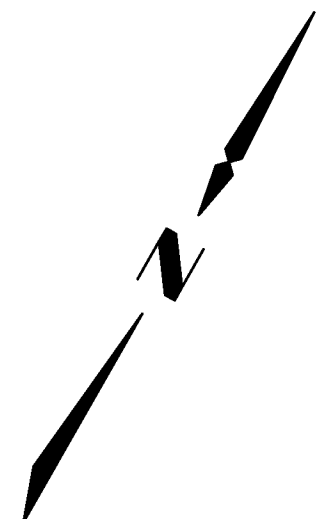
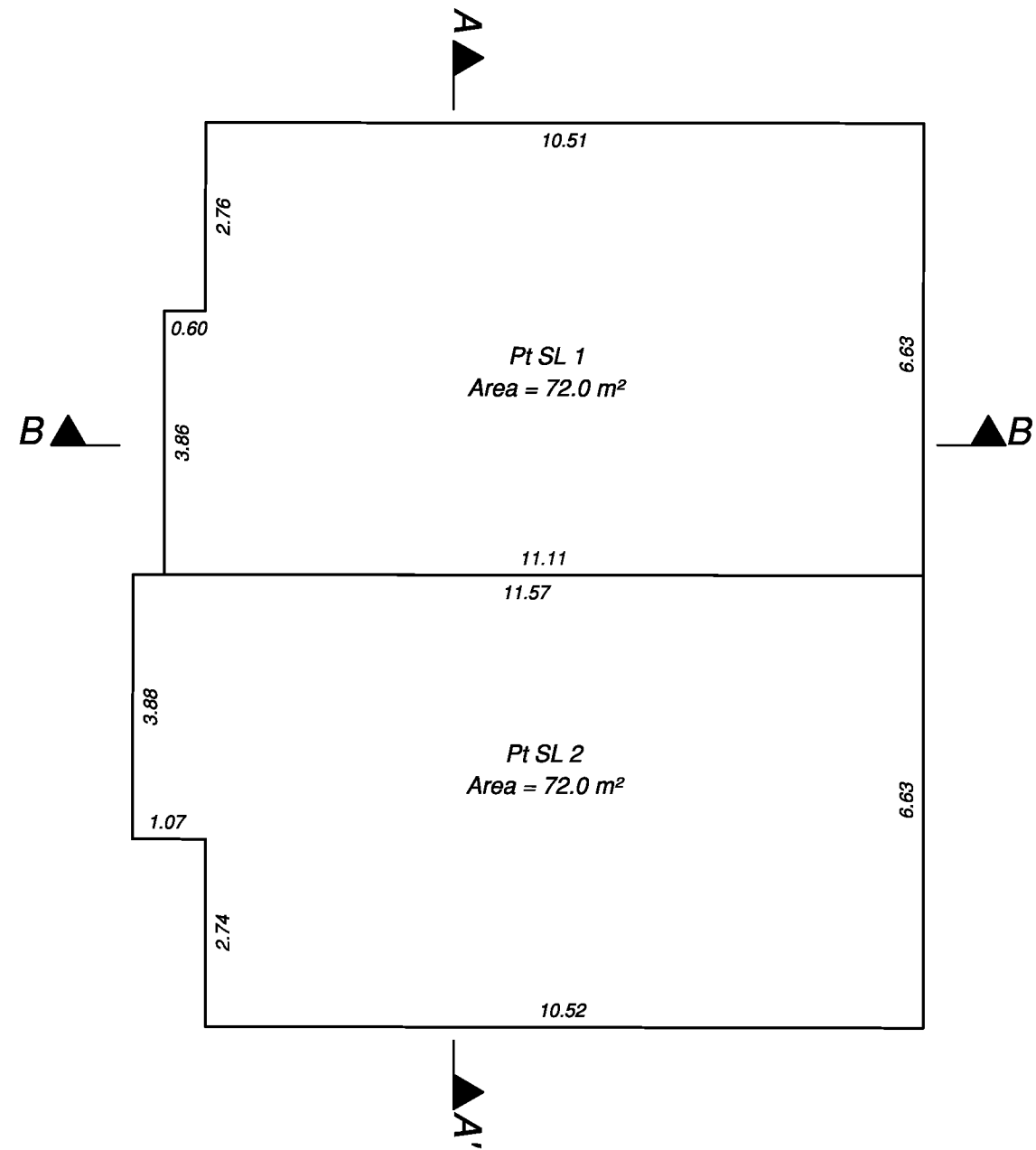
Sheet 4 of 5 Sheets

## STRATA PLAN EPS3221



The intended plot size of this plan is 432mm in width by 280mm in height (B size) when plotted at a scale of 1:100.

All distances are in metres and decimals thereof.



C:\Redfern\01 Projects\010054567\FORTWOOD\CAD\010054567\_SLSU01-R00.dwg  
2015/10/29 - 13:54



WSP Surveys (BC) Limited Partnership  
780-3rd Avenue, Prince George, BC

PROJECT REF./DRAWING No.  
010054567-SLSU01-R00

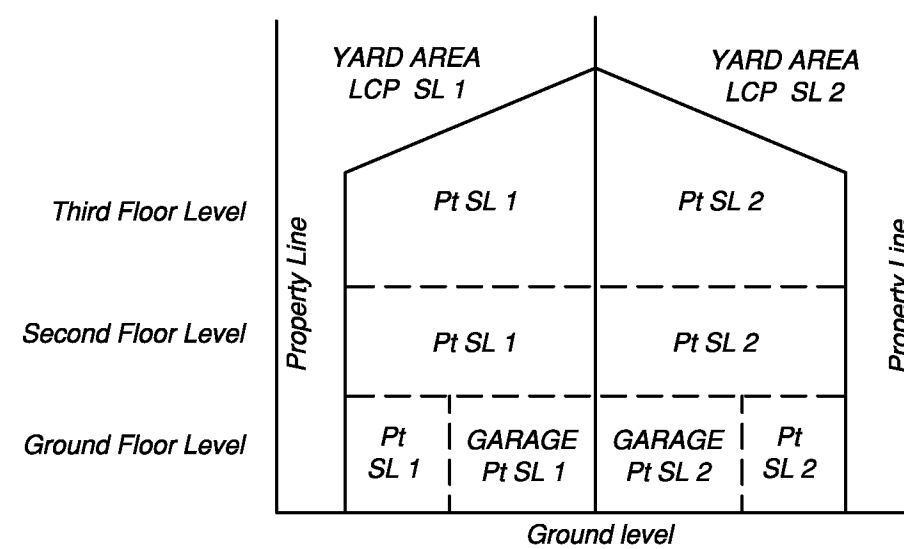
Richard Redfern, BCLS 525  
October 29, 2015

**STRATA PLAN EPS3221**

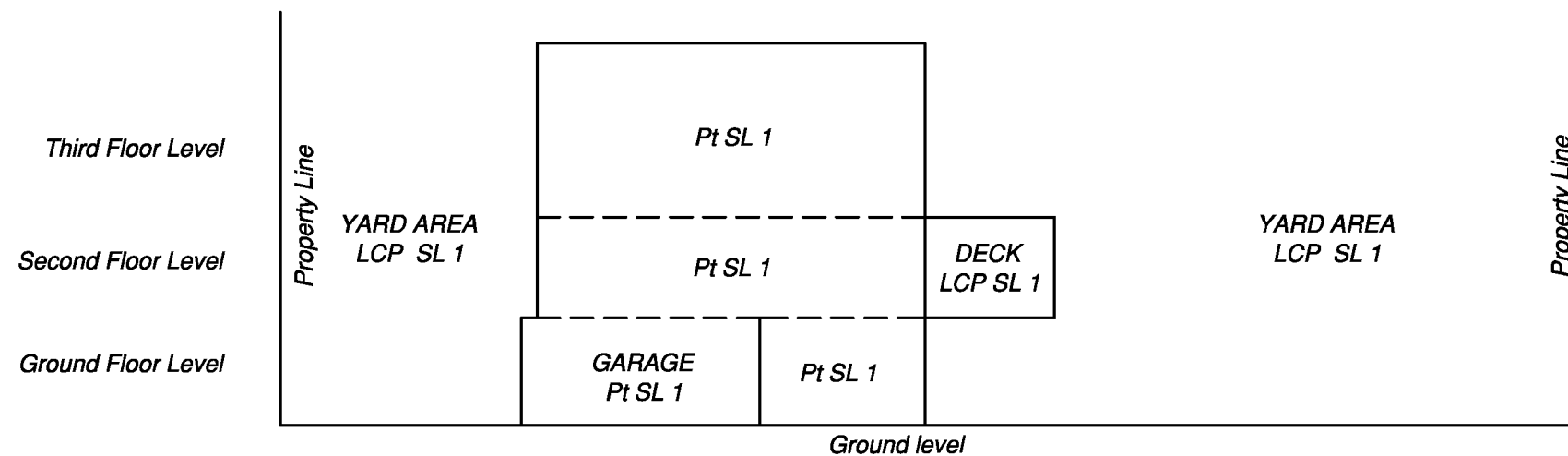
**SECTIONS**



The intended plot size of this plan is 432mm in width by 280mm in height (B size) when plotted at a scale of 1:200.



**Section A-A'**



**Section B-B'**

C:\Redfern\01 Projects\010054567\FORTWOOD\CAD\010054567\_SLSU01-R00.dwg 2015/10/29 - 13:54



WSP Surveys (BC) Limited Partnership  
780-3rd Avenue, Prince George, BC

PROJECT REF./DRAWING No.  
010054567-SLSU01-R00

Richard Redfern, BCLS 525  
October 29, 2015