

STRATA PLAN OF PART OF LOT 84, DISTRICT LOT 2003, CARIBOO DISTRICT, PLAN PGP41802.

Sheet 1 of 4 Sheets
**STRATA PLAN EPS1818
 Phase 1**

BCGS 93G.087

INTEGRATED SURVEY AREA No. 39, PRINCE GEORGE, NAD83 (CSRS)

GRID BEARINGS ARE DERIVED FROM PREVIOUSLY INTEGRATED PLAN PGP41802.

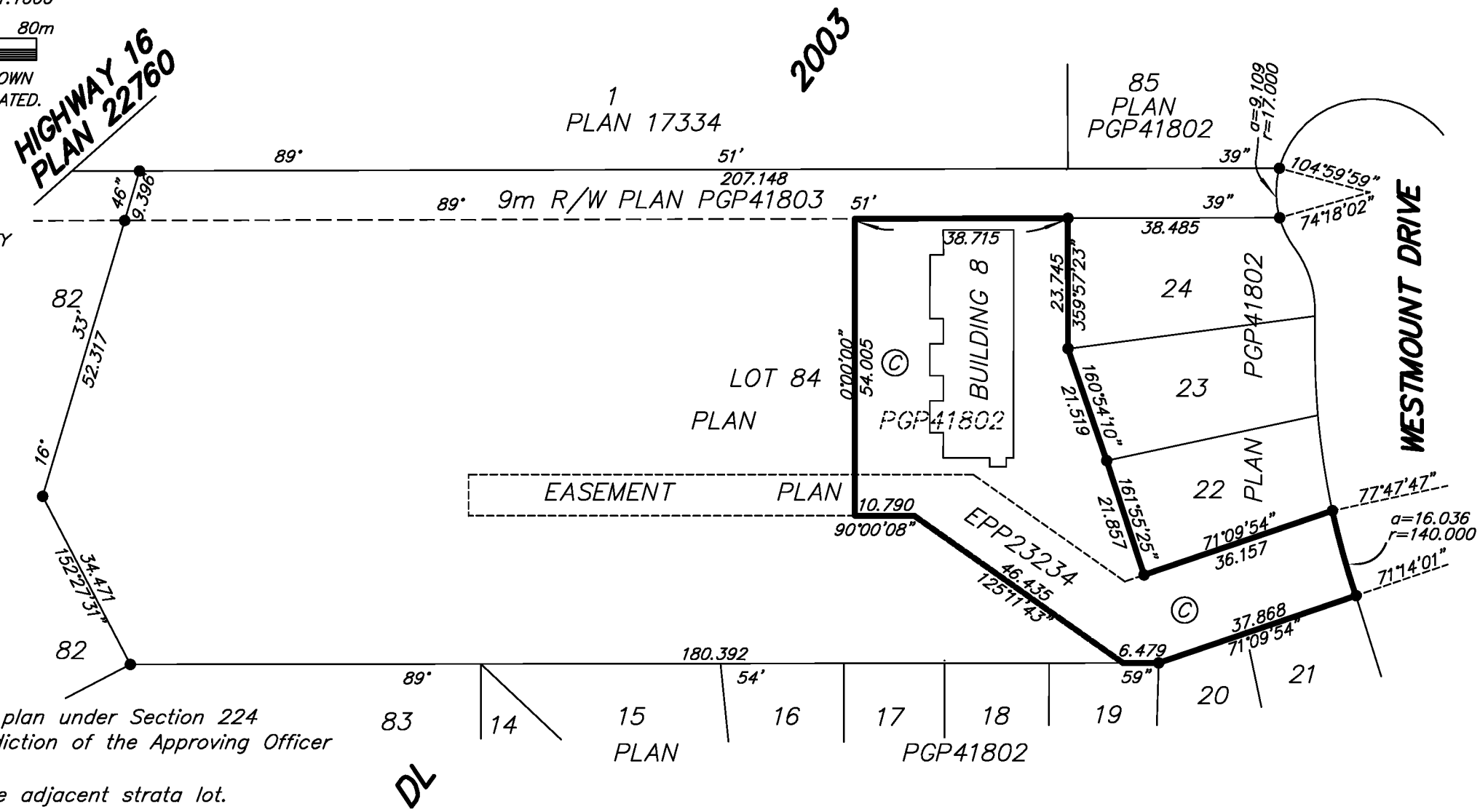
THE INTENDED PLOT SIZE OF THIS PLAN IS 432mm IN WIDTH BY 280mm IN HEIGHT (B SIZE) WHEN PLOTTED AT A SCALE OF 1:1000



ALL DISTANCES ARE HORIZONTAL GROUND-LEVEL AND ARE SHOWN IN METRES AND DECIMALS THEREOF, UNLESS OTHERWISE INDICATED.

LEGEND

- DENOTES STANDARD IRON POST FOUND
- B DENOTES BALCONY - LCP OF ADJACENT SL
- E DENOTES ELECTRICAL ROOM - COMMON PROPERTY
- ⊙ DENOTES COMMON PROPERTY
- SL DENOTES STRATA LOT
- LCP DENOTES LIMITED COMMON PROPERTY



This Plan is Phase One of a four phase strata plan under Section 224 of the Strata Property Act lying within the jurisdiction of the Approving Officer for the City of Prince George.

Balcony Height extends only to the height of the adjacent strata lot.
 All angles deflect by multiples of 45 degrees unless otherwise indicated.
 The buildings included in this strata plan have not been previously occupied.
 The buildings shown hereon are within the external boundaries of the land that is subject of the strata plan.

The field survey represented by this plan was completed by Dale Keown, BCLS, on the 18th day of April, 2013.
 This plan lies within the City of Prince George, B.C.
 This plan lies within the Regional District of Fraser-Fort George.

Civic Address
 6713 WESTMOUNT DRIVE
 PRINCE GEORGE, BC

McElhanney
 McElhanney Associates
 Land Surveying Ltd.
 Prince George, B.C.
 E-mail: pgmals@mcelhanney.com
 Ph: (250) 561-2229 Fax: (250) 563-1941

DL- 2003	File No. - 5830-ST-1
----------	----------------------

FOUNDATION PLANS BUILDING 8

BCGS 93G.087

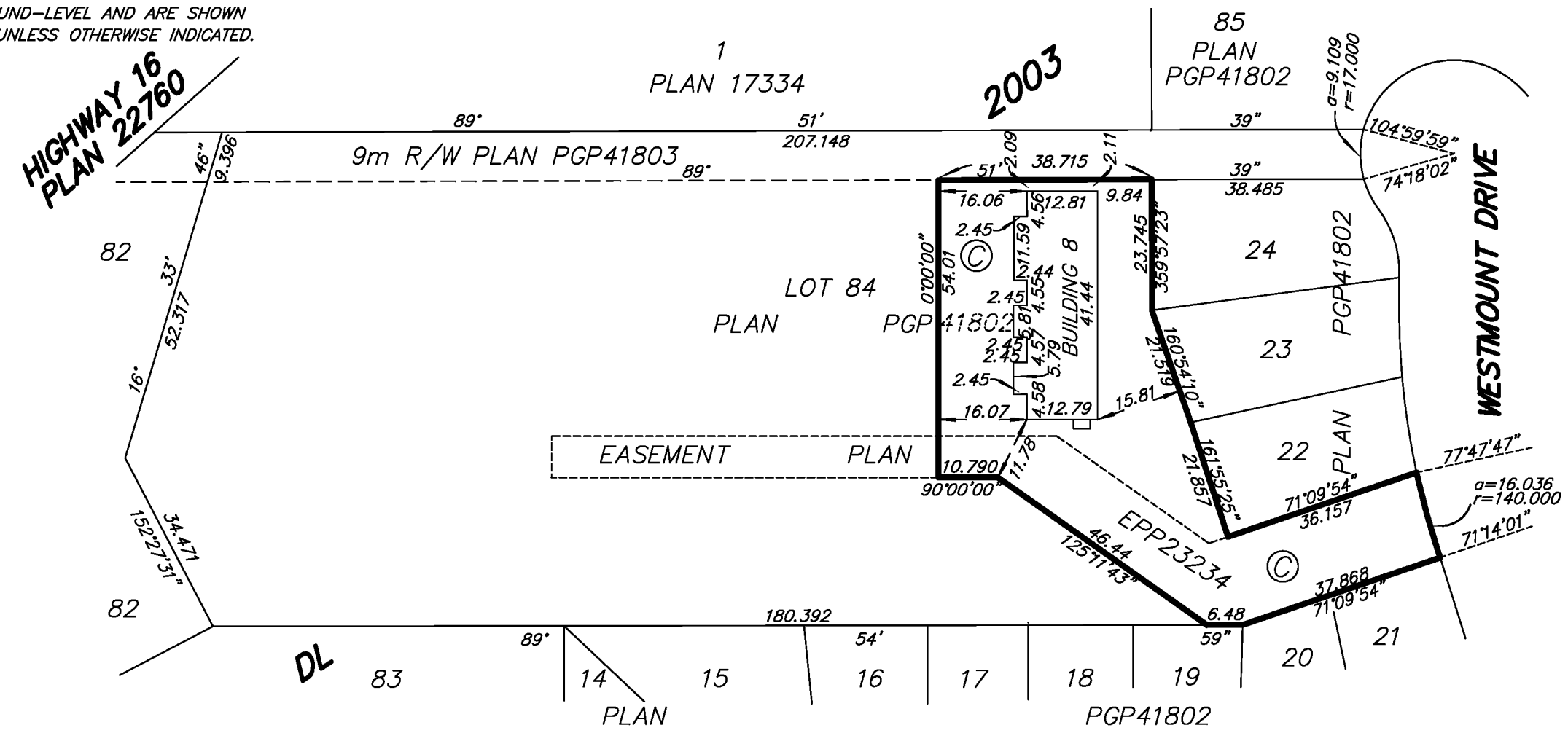
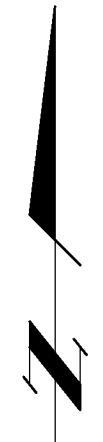
GRID BEARINGS ARE DERIVED FROM PREVIOUSLY INTEGRATED PLAN PGP41802.

THE INTENDED PLOT SIZE OF THIS PLAN IS 432mm IN WIDTH BY 280mm IN HEIGHT (B SIZE) WHEN PLOTTED AT A SCALE OF 1:1000



ALL DISTANCES ARE HORIZONTAL GROUND-LEVEL AND ARE SHOWN IN METRES AND DECIMALS THEREOF, UNLESS OTHERWISE INDICATED.

Sheet 2 of 4 Sheets
**STRATA PLAN EPS1818
Phase 1**

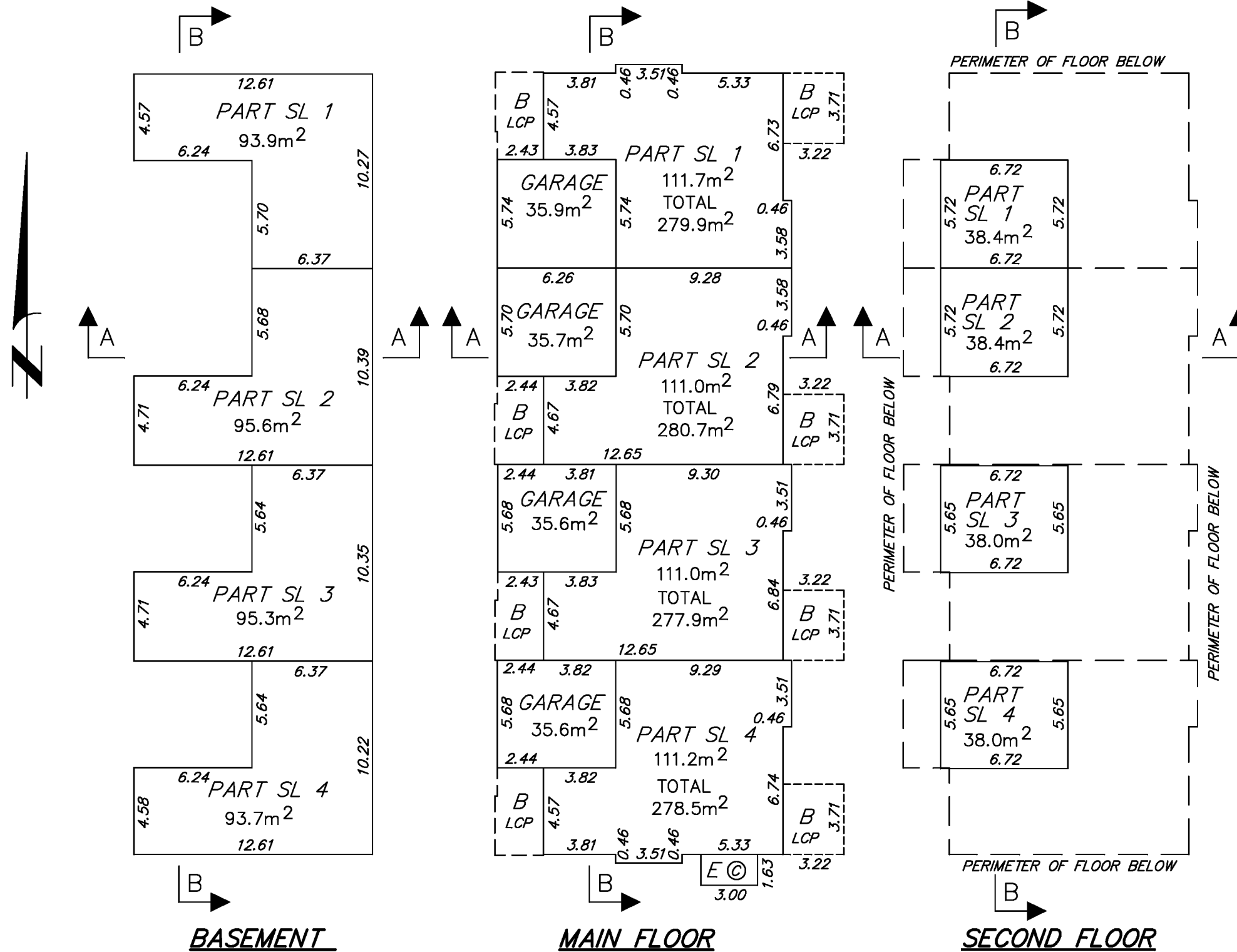


DALE KEOWN BCLS
APRIL 18, 2013

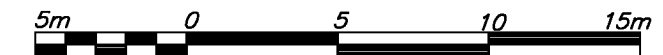
BUILDING 8 – FLOOR PLANS

SHEET 3 OF 4 SHEETS

STRATA PLAN EPS1818 Phase 1



THE INTENDED PLOT SIZE OF THIS PLAN IS 280mm IN WIDTH BY 432mm IN HEIGHT (B SIZE) WHEN PLOTTED AT A SCALE OF 1:250



ALL DISTANCES ARE HORIZONTAL GROUND-LEVEL AND ARE SHOWN IN METRES AND DECIMALS THEREOF, UNLESS OTHERWISE INDICATED.

LEGEND

- SL Denotes Strata Lot
- Strata lot boundaries as shown are to the midpoint of the structural portion of walls.
- Section arrows on this plan point in the direction of view.

DALE KEOWN, BCLS
APRIL 18, 2013

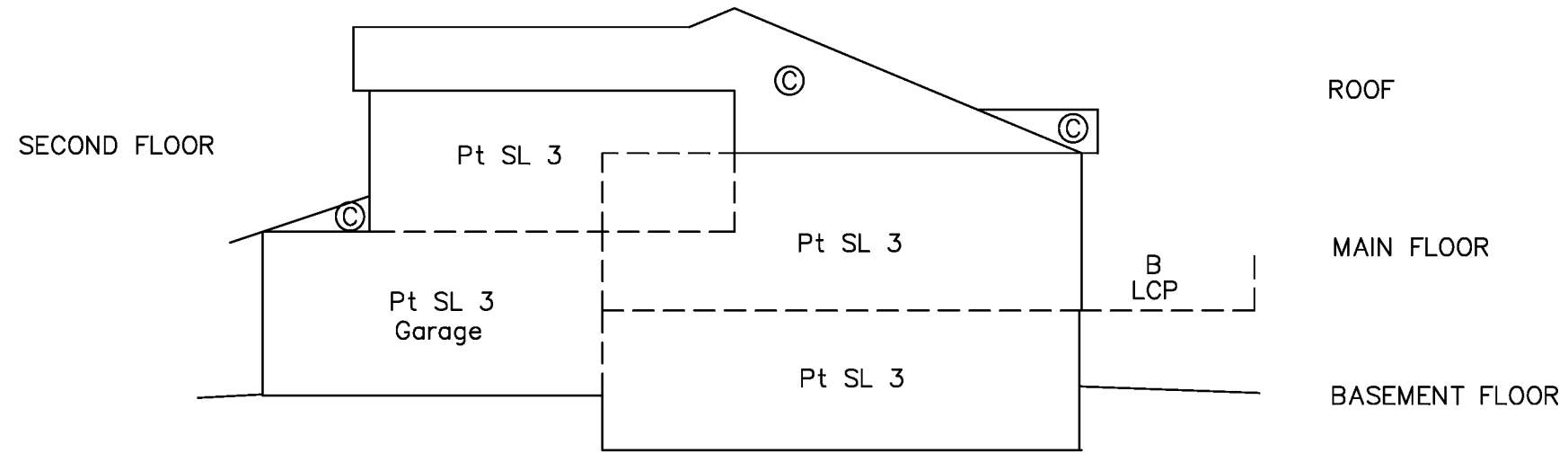
5830-ST-3

BUILDING 8 - SECTIONS

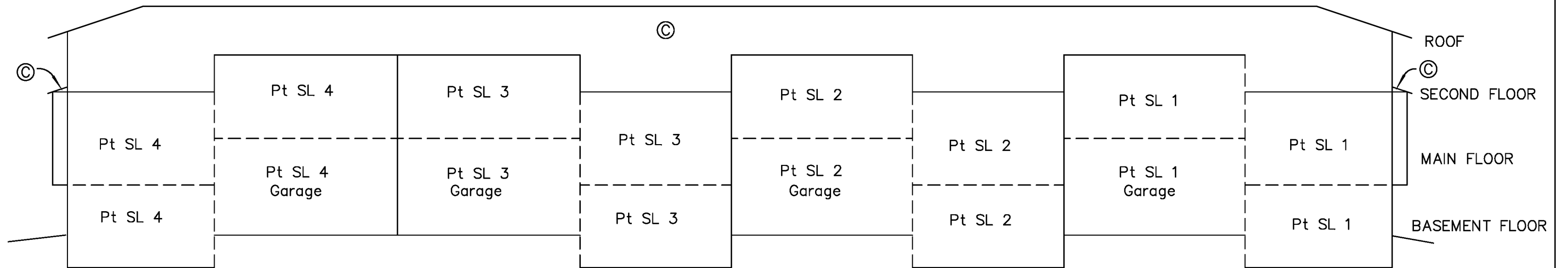
SHEET 4 OF 4 SHEETS

STRATA PLAN EPS1818 Phase 1

THE INTENDED PLOT SIZE OF THIS PLAN IS 280mm IN WIDTH BY
432mm IN HEIGHT (B SIZE) WHEN PLOTTED AT A SCALE OF 1:125



SECTION A-A



SECTION B-B

DALE KEOWN, BCLS
APRIL 18, 2013

5830-ST-4

STRATA PLAN OF PART OF LOT 84, DISTRICT LOT 2003, CARIBOO DISTRICT, PLAN PGP41802, EXCEPT PHASE ONE STRATA PLAN EPS1818.

STRATA PLAN EPS1818 Phase 2

BCGS 93G.087

INTEGRATED SURVEY AREA No. 39, PRINCE GEORGE, NAD83 (CSRS)4.0.0.BC.1

GRID BEARINGS ARE DERIVED FROM PREVIOUSLY INTEGRATED PLAN PGP41802

THE INTENDED PLOT SIZE OF THIS PLAN IS 432mm IN WIDTH BY 280mm IN HEIGHT (B SIZE) WHEN PLOTTED AT A SCALE OF 1:1000



ALL DISTANCES ARE HORIZONTAL GROUND-LEVEL AND ARE SHOWN IN METRES AND DECIMALS THEREOF, UNLESS OTHERWISE INDICATED.

LEGEND

- DENOTES STANDARD IRON POST FOUND
- B DENOTES BALCONY - LCP OF ADJACENT SL
- E DENOTES ELECTRICAL ROOM - COMMON PROPERTY
- G DENOTES GARAGE
- ⊙ DENOTES COMMON PROPERTY
- SL DENOTES STRATA LOT
- LCP DENOTES LIMITED COMMON PROPERTY

ALL ANGLES DEFLECT BY MULTIPLES OF 45 DEGREES UNLESS OTHERWISE INDICATED.

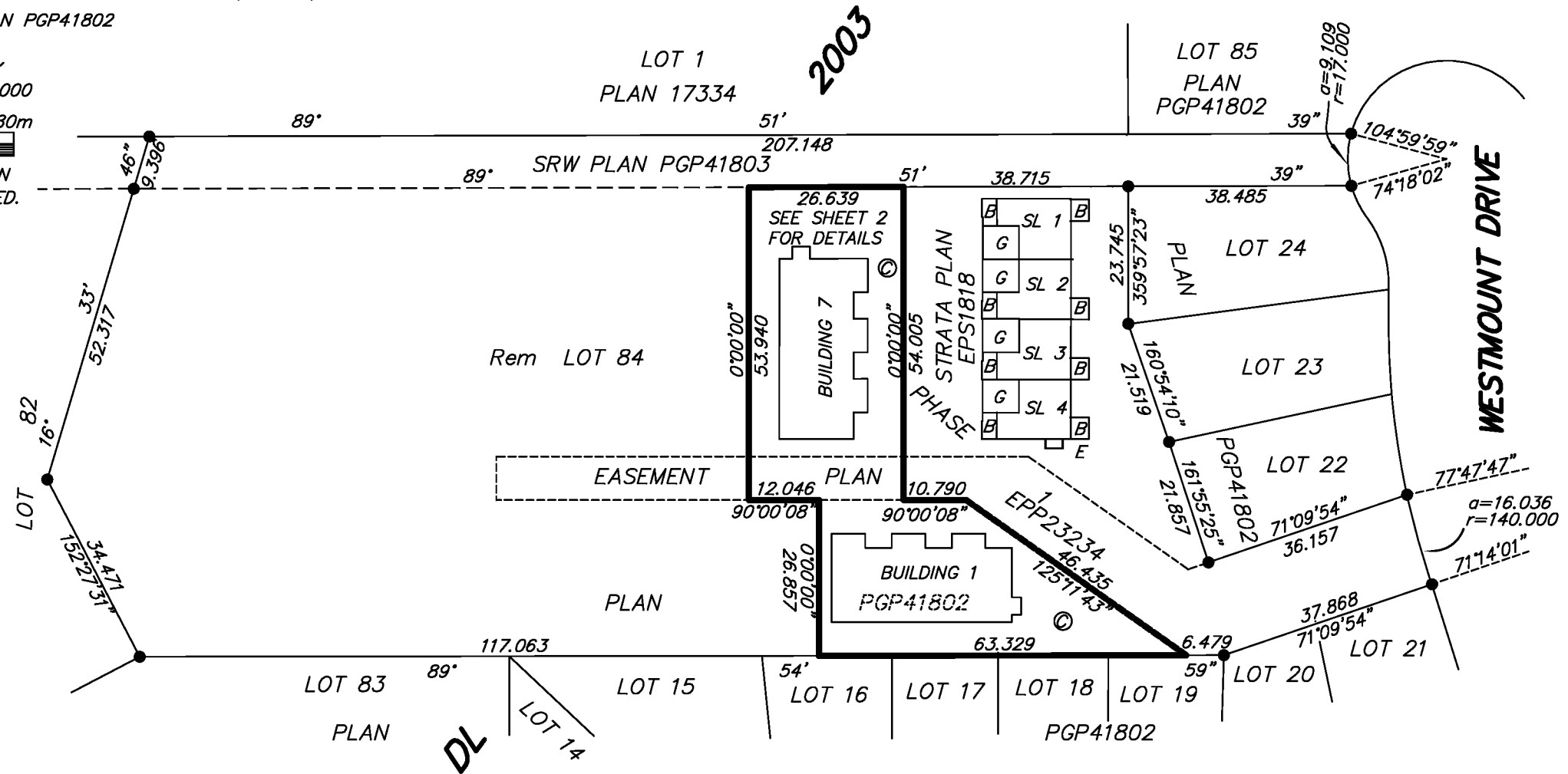
THIS PLAN IS PHASE 2 OF A 4 PHASE STRATA PLAN UNDER SECTION 224 OF THE STRATA PROPERTY ACT LYING WITHIN THE JURISDICTION OF THE APPROVING OFFICER FOR THE CITY OF PRINCE GEORGE.

THE BUILDINGS IN THIS STRATA PLAN HAVE NOT BEEN PREVIOUSLY OCCUPIED.

THE BUILDINGS SHOWN HEREON ARE WITHIN THE EXTERNAL BOUNDARIES OF THE LAND THAT IS THE SUBJECT OF THE STRATA PLAN.

ALL BALCONIES AND PATIOS ARE DEFINED AS TO HEIGHT BY THE CENTRE OF THE FLOOR ABOVE OR ITS EXTENSIONS, OR WHERE THERE IS NO FLOOR ABOVE BY THE AVERAGE HEIGHT OF A STRATA LOT WITHIN THE SAME BUILDING, UNLESS OTHERWISE INDICATED.

THE FIELD SURVEY REPRESENTED BY THIS PLAN WAS COMPLETED ON THE 21ST DAY OF MAY, 2014.
DALE KEOWN, BCLS 468



CIVIC ADDRESS

6713 WESTMOUNT DRIVE
PRINCE GEORGE, BC

THIS PLAN LIES WITHIN THE CITY OF PRINCE GEORGE, B.C.

THIS PLAN LIES WITHIN THE REGIONAL DISTRICT OF FRASER-FORT GEORGE.



McElhanney
McElhanney Associates
Land Surveying Ltd.
Prince George, B.C.

E-mail: pgmals@mcElhanney.com
Ph: (250) 561-2229 Fax: (250) 563-1941

DL- 2003

File No. - 5830-ST2-1

BUILDING FOUNDATIONS

Sheet 2 of 9 Sheets
**STRATA PLAN EPS1818
 Phase 2**

THE INTENDED PLOT SIZE OF THIS PLAN IS 432mm IN WIDTH BY 280mm IN HEIGHT (B SIZE) WHEN PLOTTED AT A SCALE OF 1:500

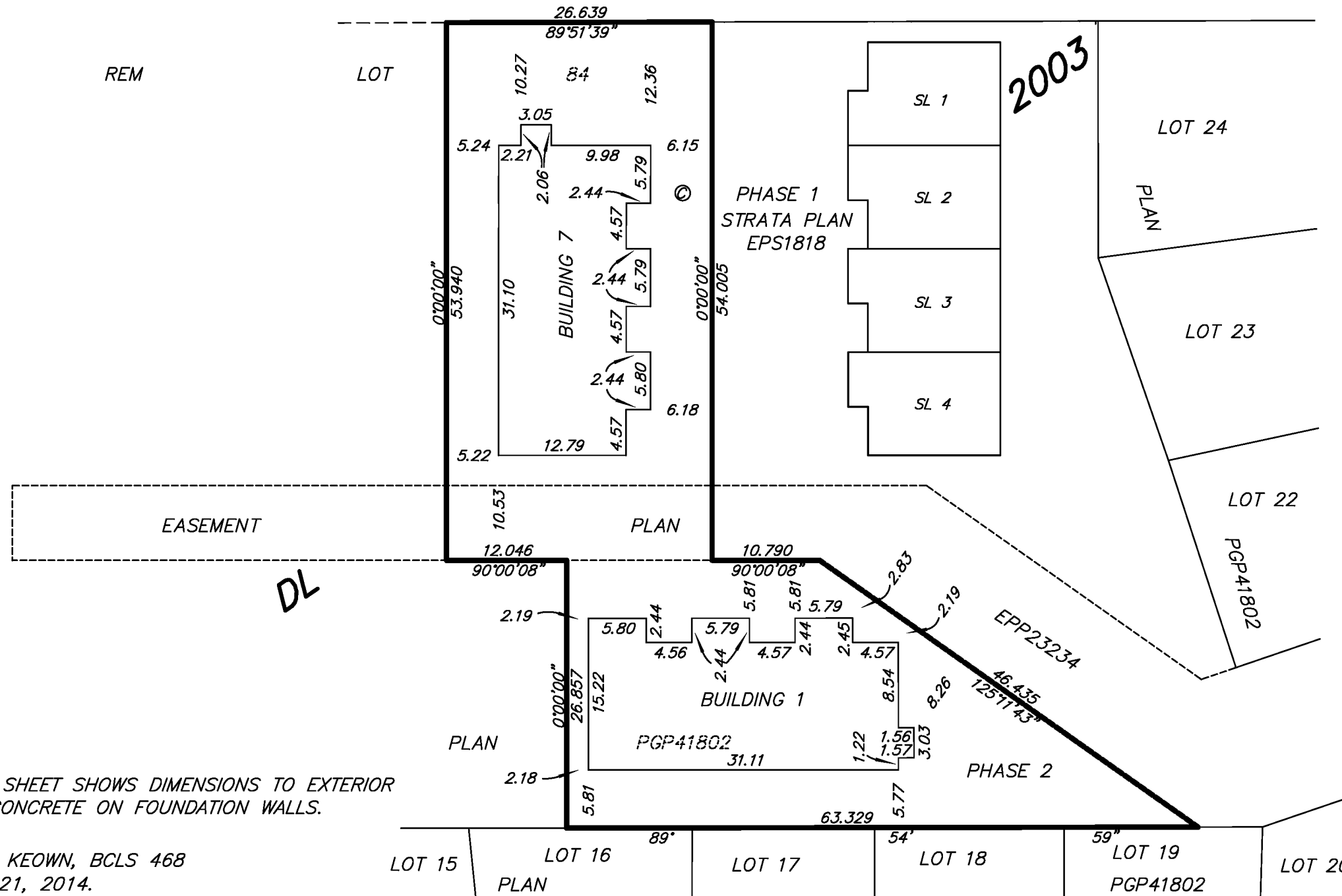


ALL DISTANCES ARE HORIZONTAL GROUND-LEVEL AND ARE SHOWN IN METRES AND DECIMALS THEREOF, UNLESS OTHERWISE INDICATED.

LOT 1
 PLAN 17334

LOT 85
 PLAN
 PGP41802

SRW PLAN PGP41803



THIS SHEET SHOWS DIMENSIONS TO EXTERIOR OF CONCRETE ON FOUNDATION WALLS.

DALE KEOWN, BCLS 468
 MAY 21, 2014.

McElhanney
 McElhanney Associates
 Land Surveying Ltd.
 Prince George, B.C.
 E-mail: pgmals@mcelhanney.com
 Ph: (250) 561-2229 Fax: (250) 563-1941

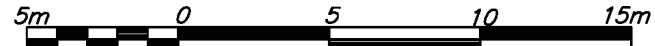
DL-2003	File No. - 5830-ST2-2
---------	-----------------------



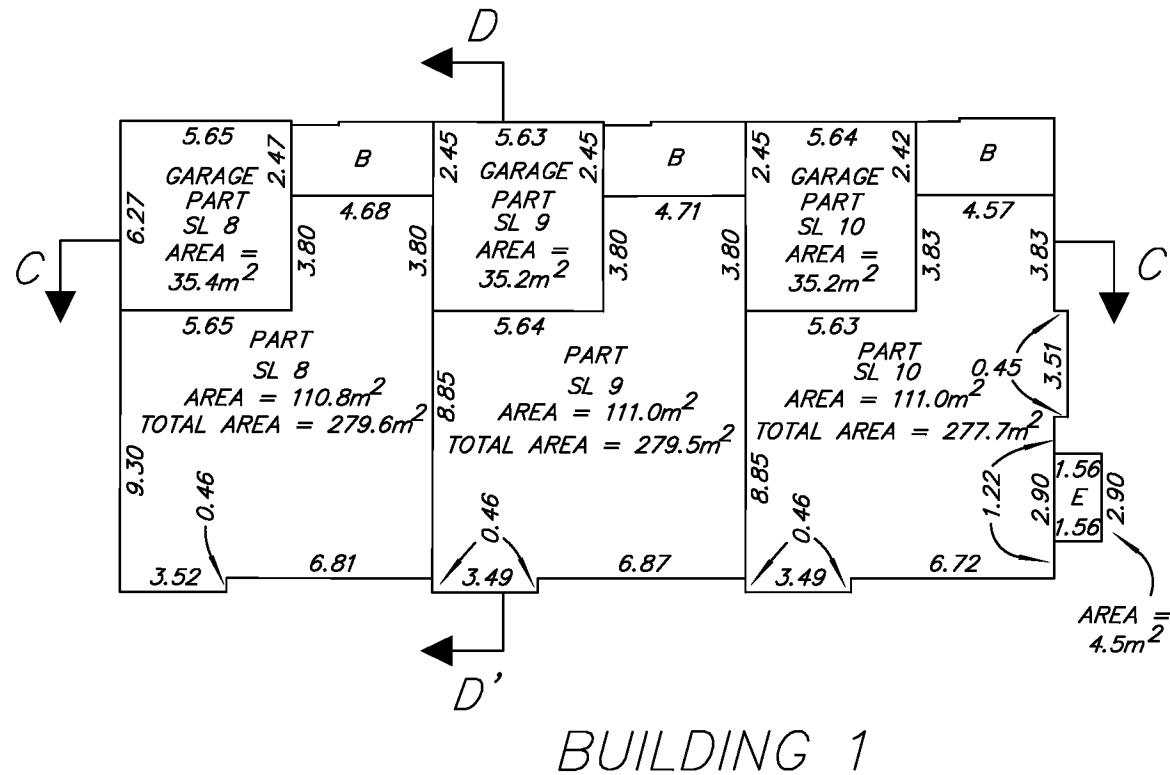
FIRST FLOOR BUILDING 1

STRATA PLAN EPS1818 Phase 2

THE INTENDED PLOT SIZE OF THIS PLAN IS 432mm IN WIDTH BY 280mm IN HEIGHT (B SIZE) WHEN PLOTTED AT A SCALE OF 1:250



ALL DISTANCES ARE HORIZONTAL GROUND-LEVEL AND ARE SHOWN IN METRES AND DECIMALS THEREOF, UNLESS OTHERWISE INDICATED.



SECTION ARROWS ON THIS PLAN POINT IN THE DIRECTION OF VIEW.

THIS SHEET SHOWS DIMENSIONS TO THE CENTRELINE OF ALL WALLS.

DALE KEOWN, BCLS 468
MAY 21, 2014.



McElhanney
McElhanney Associates
Land Surveying Ltd.
Prince George, B.C.

E-mail: pgmals@mcelhanney.com
Ph: (250) 561-2229 Fax: (250) 563-1941

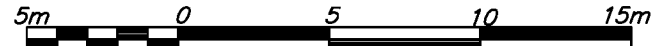
DL- 2003

File No. - 5830-ST2-3

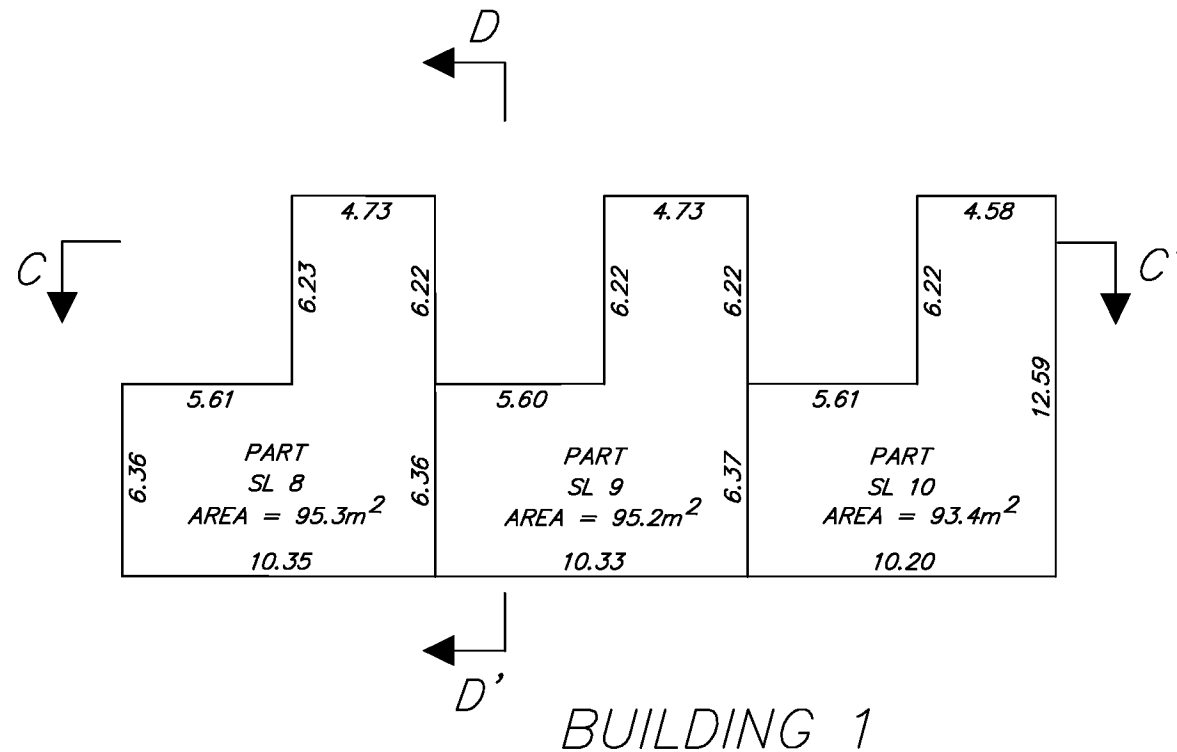
BASEMENT BUILDING 1

STRATA PLAN EPS1818 Phase 2

THE INTENDED PLOT SIZE OF THIS PLAN IS 432mm IN WIDTH BY 280mm IN HEIGHT (B SIZE) WHEN PLOTTED AT A SCALE OF 1:250



ALL DISTANCES ARE HORIZONTAL GROUND-LEVEL AND ARE SHOWN IN METRES AND DECIMALS THEREOF, UNLESS OTHERWISE INDICATED.



SECTION ARROWS ON THIS PLAN POINT IN THE DIRECTION OF VIEW.

THIS SHEET SHOWS DIMENSIONS TO THE CENTRELINE OF ALL WALLS.

DALE KEOWN, BCLS 468
MAY 21, 2014.



McElhanney
McElhanney Associates
Land Surveying Ltd.
Prince George, B.C.

E-mail: pgmals@mcelhanney.com
Ph: (250) 561-2229 Fax: (250) 563-1941

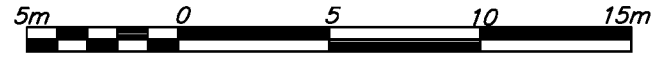
DL- 2003

File No. - 5830-ST2-3

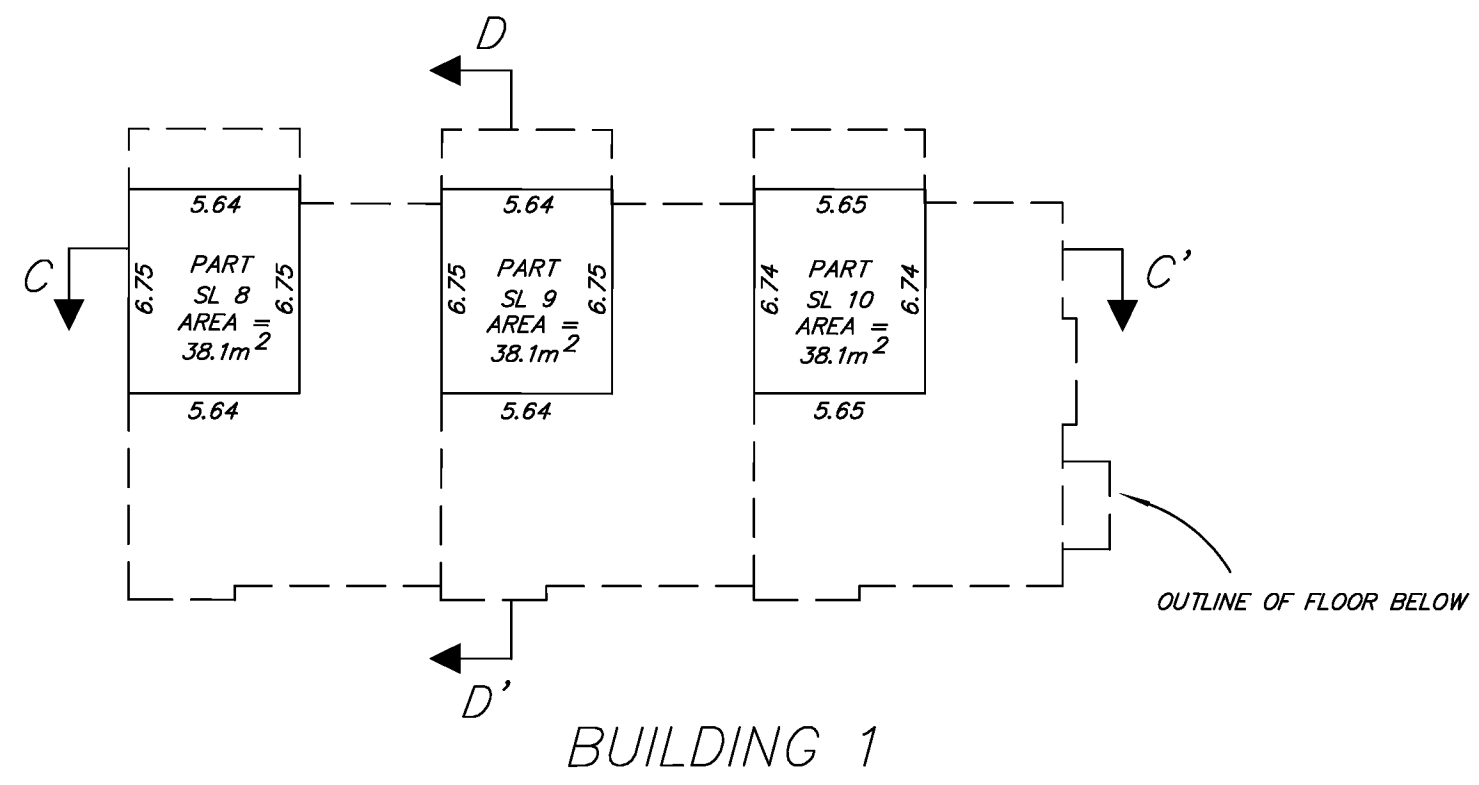
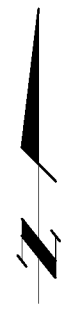
SECOND FLOOR BUILDING 1

STRATA PLAN EPS1818 Phase 2

THE INTENDED PLOT SIZE OF THIS PLAN IS 432mm IN WIDTH BY 280mm IN HEIGHT (B SIZE) WHEN PLOTTED AT A SCALE OF 1:250



ALL DISTANCES ARE HORIZONTAL GROUND-LEVEL AND ARE SHOWN IN METRES AND DECIMALS THEREOF, UNLESS OTHERWISE INDICATED.




BUILDING 1

SECTION ARROWS ON THIS PLAN POINT IN THE DIRECTION OF VIEW.

THIS SHEET SHOWS DIMENSIONS TO THE CENTRELINE OF ALL WALLS.

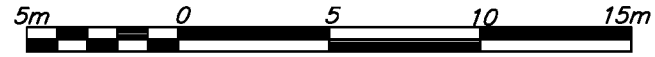
DALE KEOWN, BCLS 468
MAY 21, 2014.

 McElhanney McElhanney Associates Land Surveying Ltd. Prince George, B.C. E-mail: pgmals@mcelhanney.com Ph: (250) 561-2229 Fax: (250) 563-1941	
DL- 2003	File No. - 5830-ST2-3

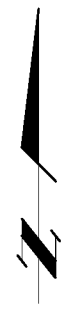
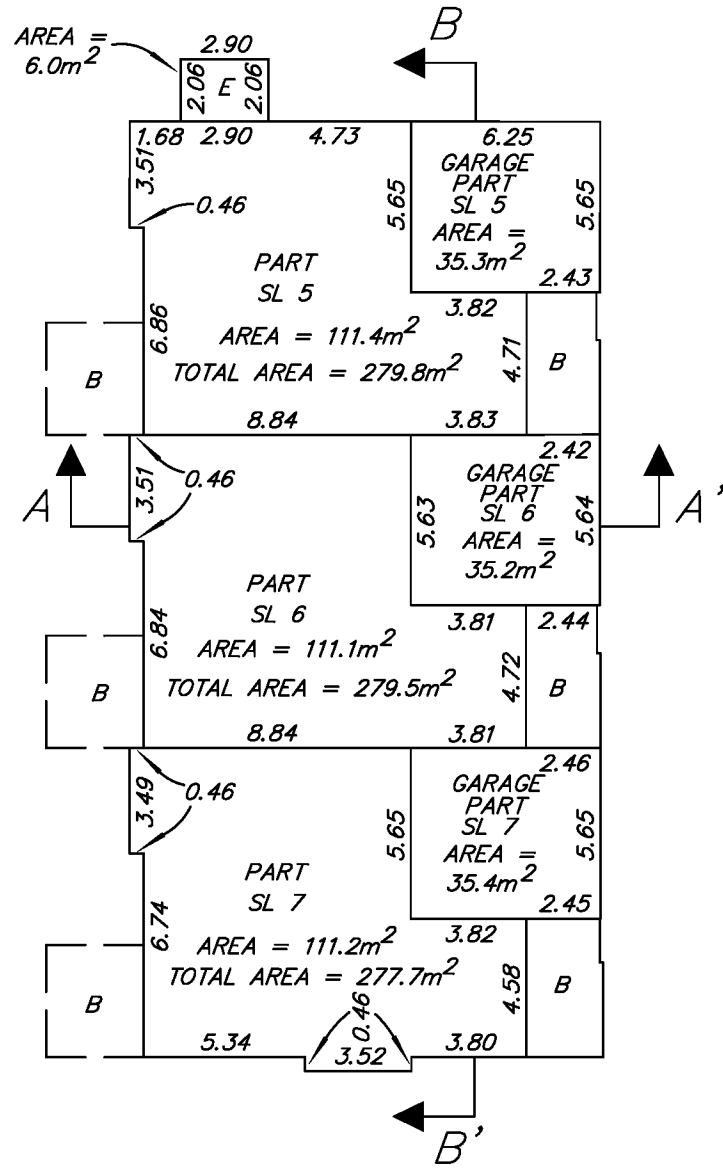
FIRST FLOOR BUILDING 7

STRATA PLAN EPS1818 Phase 2

THE INTENDED PLOT SIZE OF THIS PLAN IS 432mm IN WIDTH BY 280mm IN HEIGHT (B SIZE) WHEN PLOTTED AT A SCALE OF 1:250



ALL DISTANCES ARE HORIZONTAL GROUND-LEVEL AND ARE SHOWN IN METRES AND DECIMALS THEREOF, UNLESS OTHERWISE INDICATED.



BUILDING 7

SECTION ARROWS ON THIS PLAN POINT IN THE DIRECTION OF VIEW.

THIS SHEET SHOWS DIMENSIONS TO THE CENTRELINE OF ALL WALLS.

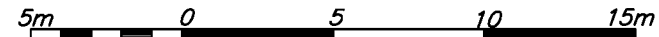
DALE KEOWN, BCLS 468
MAY 21, 2014.

 McElhanney McElhanney Associates Land Surveying Ltd. Prince George, B.C. E-mail: pgmals@mcelhanney.com Ph: (250) 561-2229 Fax: (250) 563-1941	
DL- 2003	File No. - 5830-ST2-3

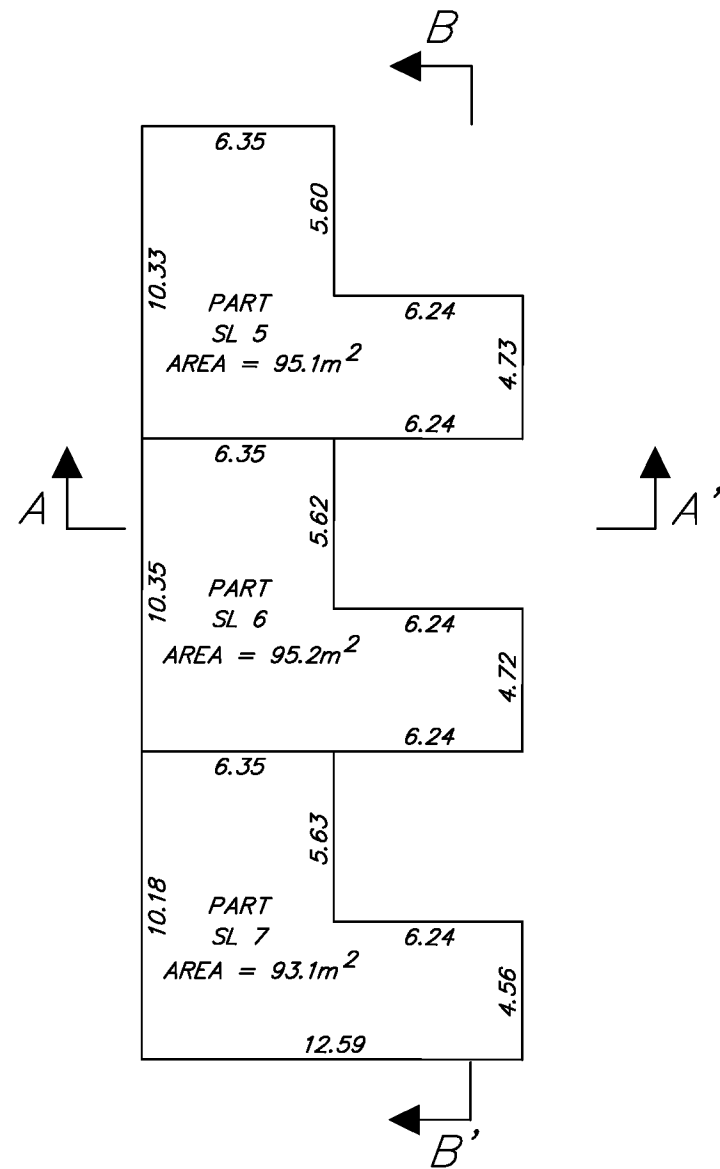
STRATA PLAN EPS1818 Phase 2

BASEMENT BUILDING 7

THE INTENDED PLOT SIZE OF THIS PLAN IS 432mm IN WIDTH BY 280mm IN HEIGHT (B SIZE) WHEN PLOTTED AT A SCALE OF 1:250



ALL DISTANCES ARE HORIZONTAL GROUND-LEVEL AND ARE SHOWN IN METRES AND DECIMALS THEREOF, UNLESS OTHERWISE INDICATED.



BUILDING 7

SECTION ARROWS ON THIS PLAN POINT IN THE DIRECTION OF VIEW.

THIS SHEET SHOWS DIMENSIONS TO THE CENTRELINE OF ALL WALLS.

DALE KEOWN, BCLS 468
MAY 21, 2014.



McElhanney
McElhanney Associates
Land Surveying Ltd.
Prince George, B.C.

E-mail: pgmals@mcelhanney.com
Ph: (250) 561-2229 Fax: (250) 563-1941

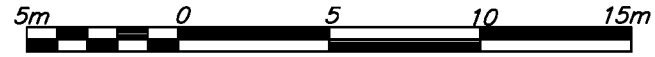
DL- 2003

File No. - 5830-ST2-3

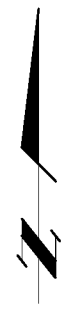
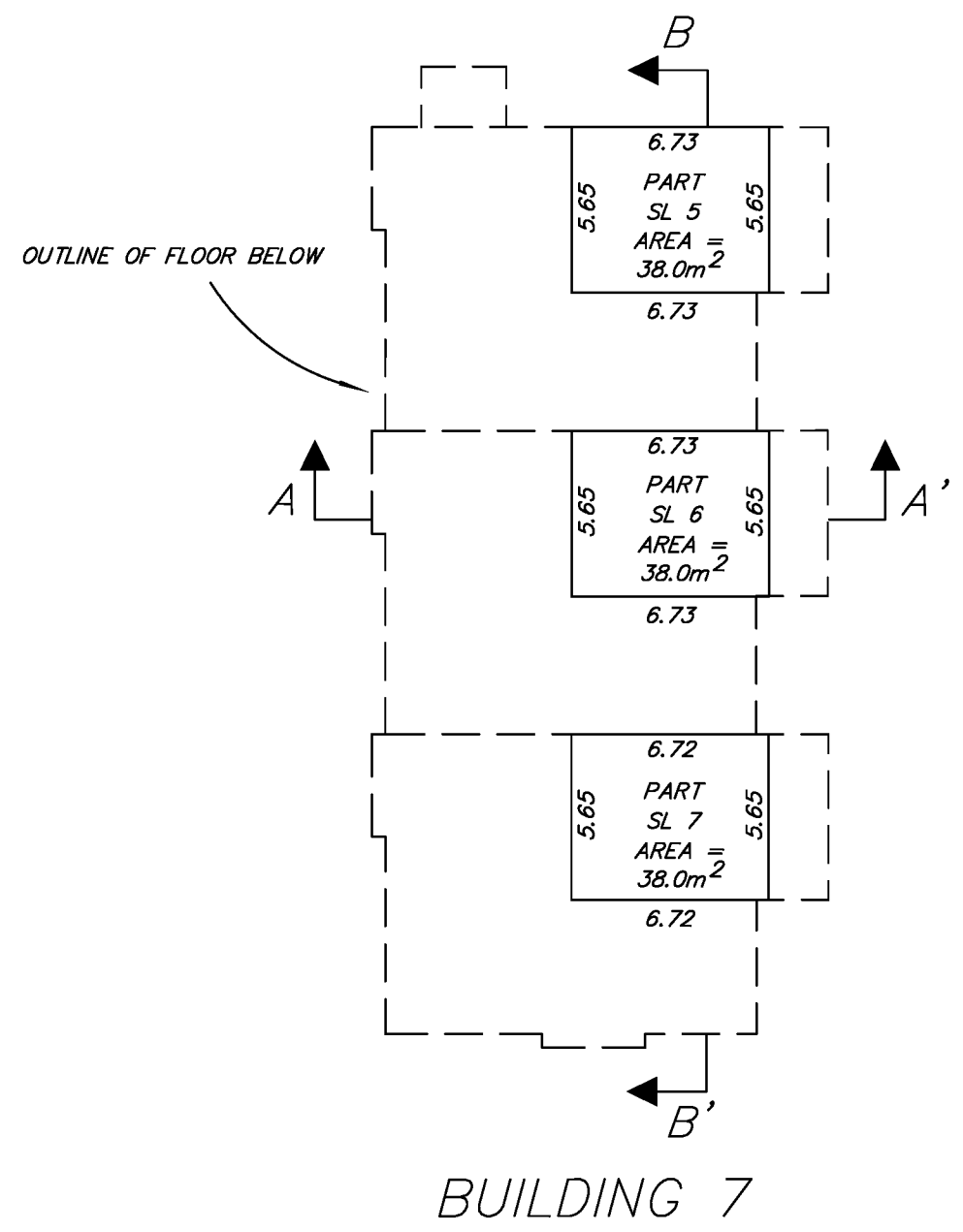
SECOND FLOOR BUILDING 7

STRATA PLAN EPS1818 Phase 2

THE INTENDED PLOT SIZE OF THIS PLAN IS 432mm IN WIDTH BY 280mm IN HEIGHT (B SIZE) WHEN PLOTTED AT A SCALE OF 1:250




ALL DISTANCES ARE HORIZONTAL GROUND-LEVEL AND ARE SHOWN IN METRES AND DECIMALS THEREOF, UNLESS OTHERWISE INDICATED.



SECTION ARROWS ON THIS PLAN POINT IN THE DIRECTION OF VIEW.

THIS SHEET SHOWS DIMENSIONS TO THE CENTRELINE OF ALL WALLS.

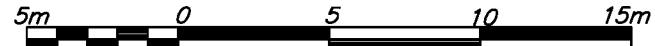
DALE KEOWN, BCLS 468
MAY 21, 2014.

 McElhanney McElhanney Associates Land Surveying Ltd. Prince George, B.C. E-mail: pgmals@mcelhanney.com Ph: (250) 561-2229 Fax: (250) 563-1941	
DL- 2003	File No. - 5830-ST2-3

STRATA PLAN EPS1818 Phase 2

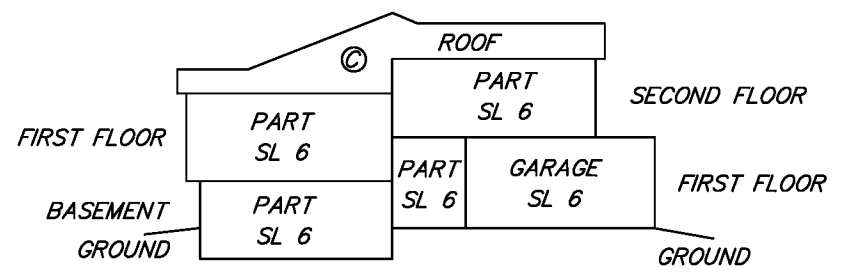
CROSS SECTIONS

THE INTENDED PLOT SIZE OF THIS PLAN IS 432mm IN WIDTH BY 280mm IN HEIGHT (B SIZE) WHEN PLOTTED AT A SCALE OF 1:250

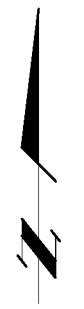
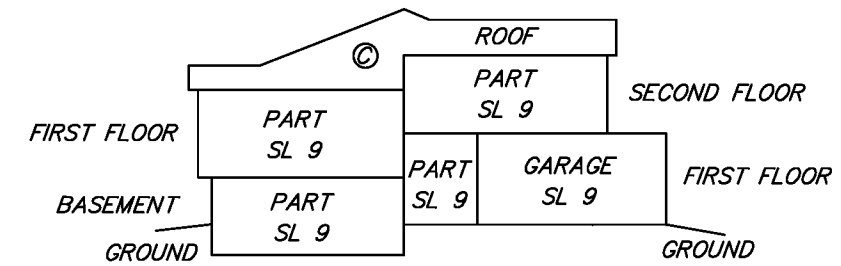
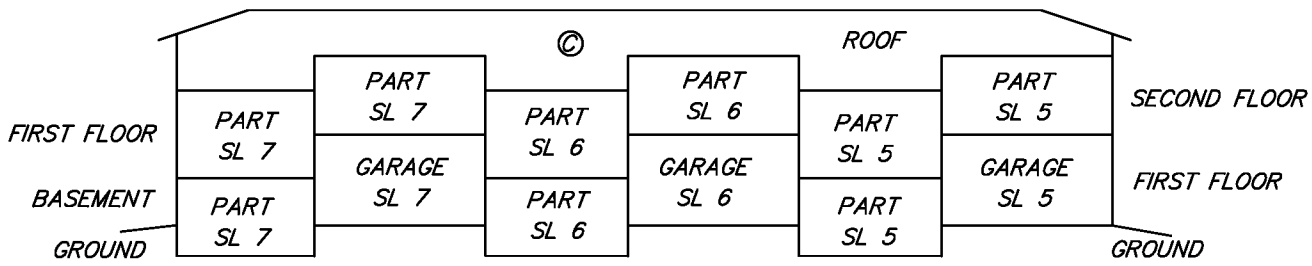
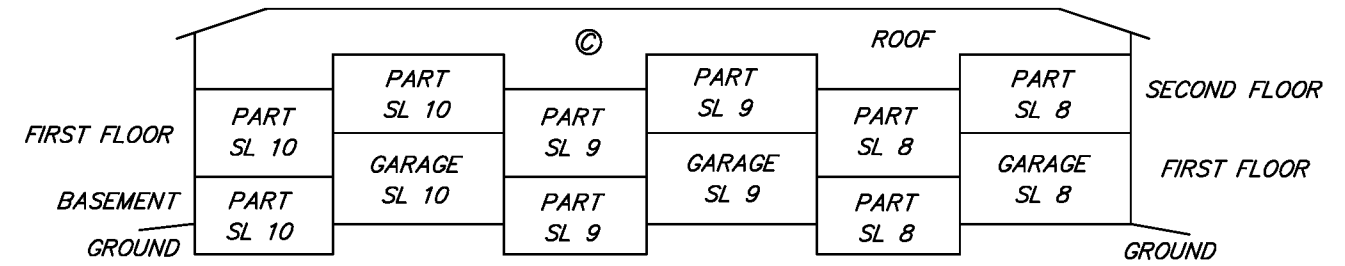


ALL DISTANCES ARE HORIZONTAL GROUND-LEVEL AND ARE SHOWN IN METRES AND DECIMALS THEREOF, UNLESS OTHERWISE INDICATED.

BUILDING 7



BUILDING 1



DALE KEOWN, BCLS 468
MAY 21, 2014.

 McElhanney McElhanney Associates Land Surveying Ltd. Prince George, B.C. E-mail: pgmals@mcelhanney.com Ph: (250) 561-2229 Fax: (250) 563-1941	
DL- 2003	File No. - 5830-ST2-3