

**BARE LAND STRATA PLAN OF LOT 1, DISTRICT LOTS 905 AND 2003, CARIBOO DISTRICT, PLAN EPP30392.**

BCGS 93G.087

PURSUANT TO THE STRATA PROPERTY ACT.  
INTEGRATED SURVEY AREA No. 39, PRINCE GEORGE, NAD83 (CSRS)

THE INTENDED PLOT SIZE OF THIS PLAN IS 864mm IN WIDTH BY 560mm IN HEIGHT (D SIZE) WHEN PLOTTED AT A SCALE OF 1:750



ALL DISTANCES ARE SHOWN IN METRES AND DECIMALS THEREOF, UNLESS OTHERWISE INDICATED.

**LEGEND**

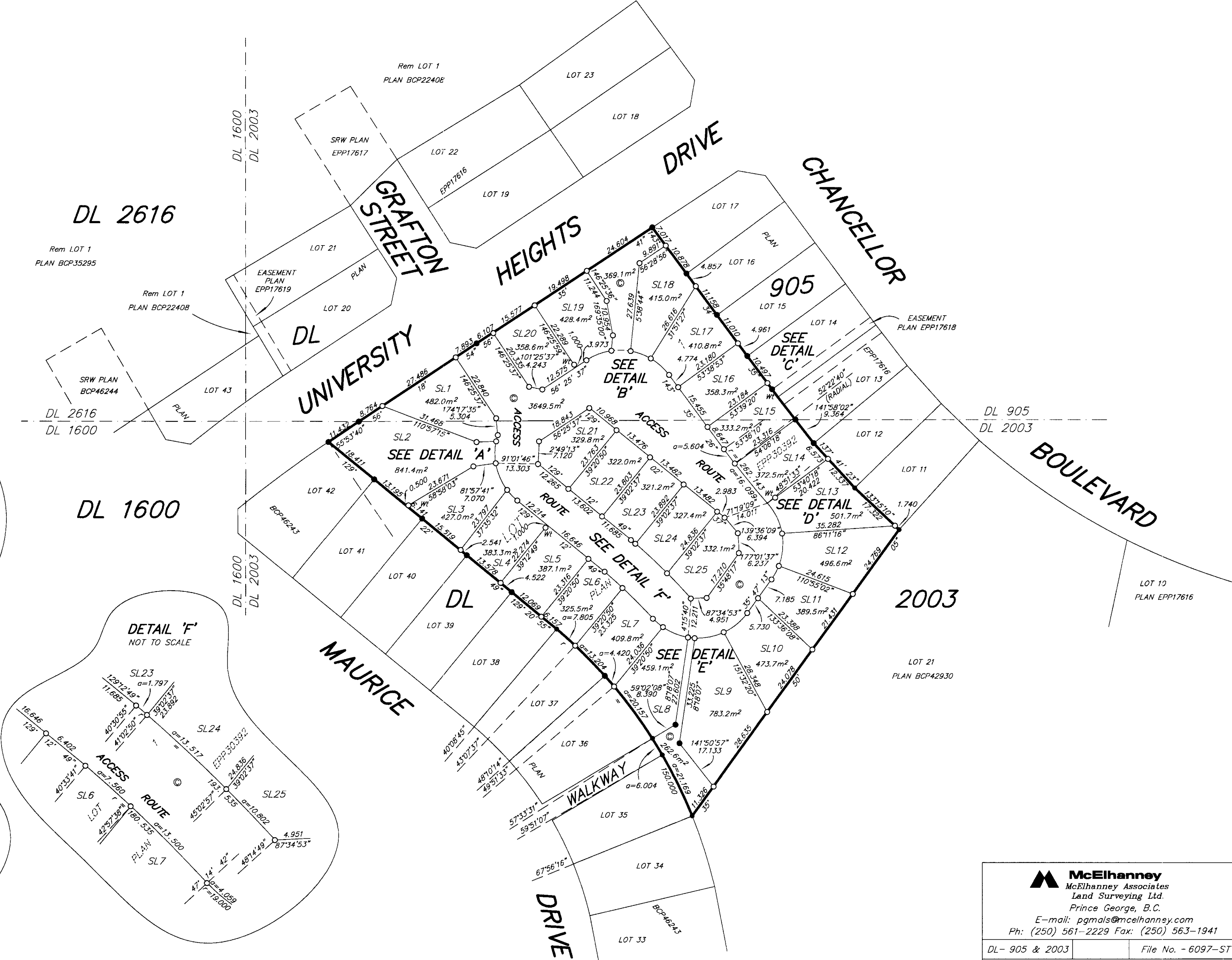
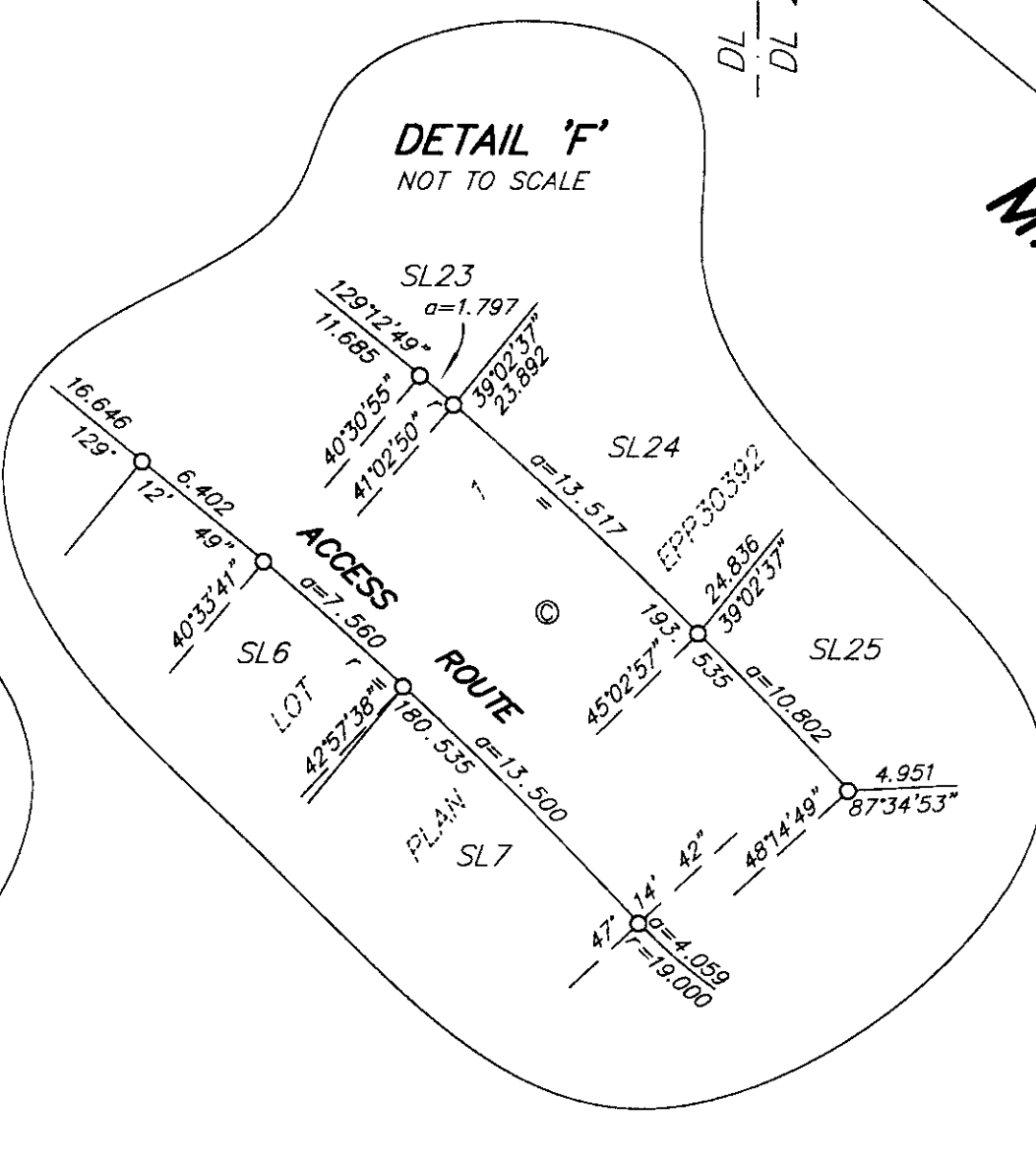
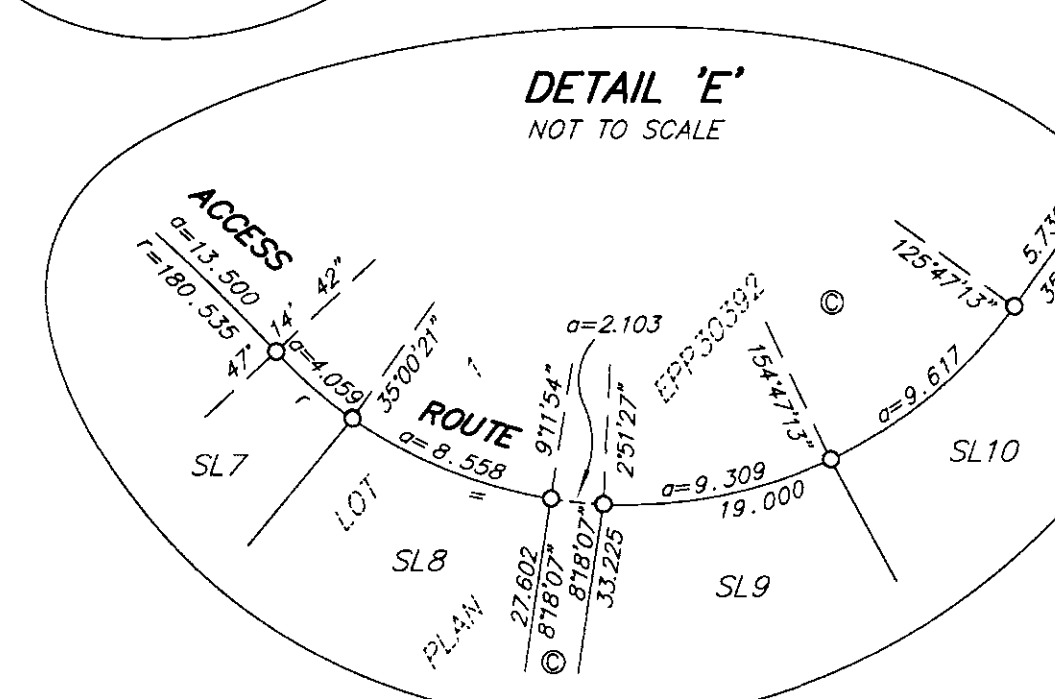
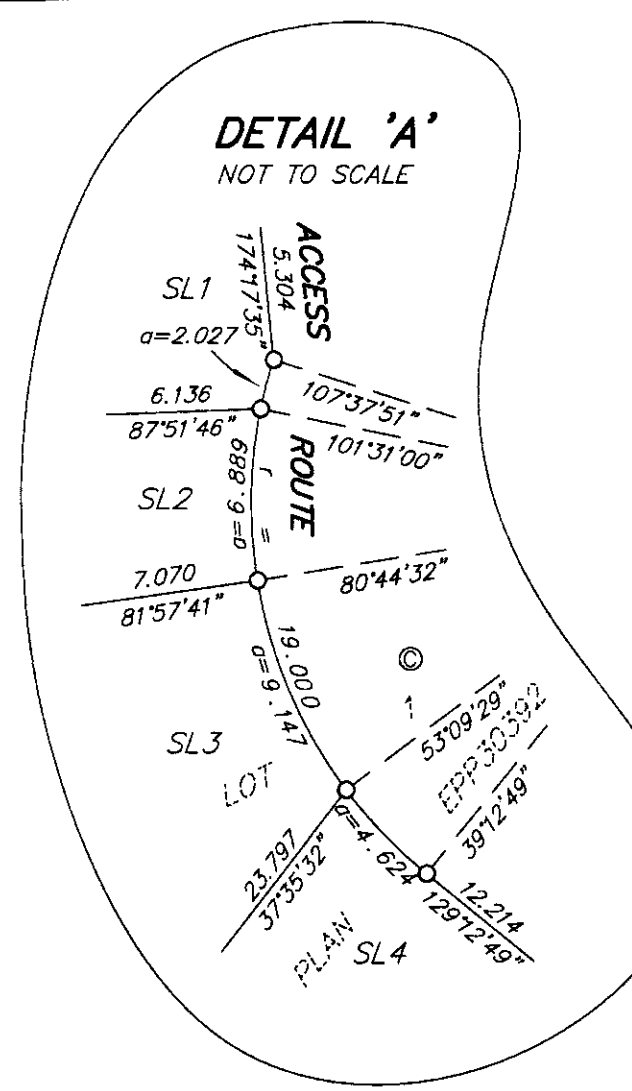
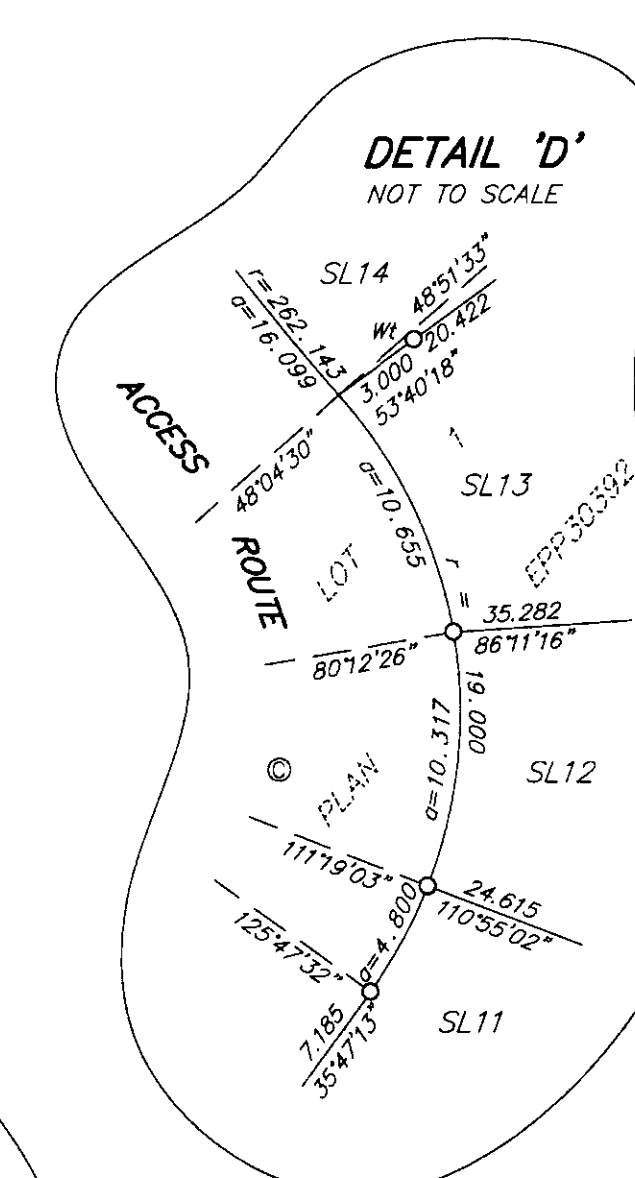
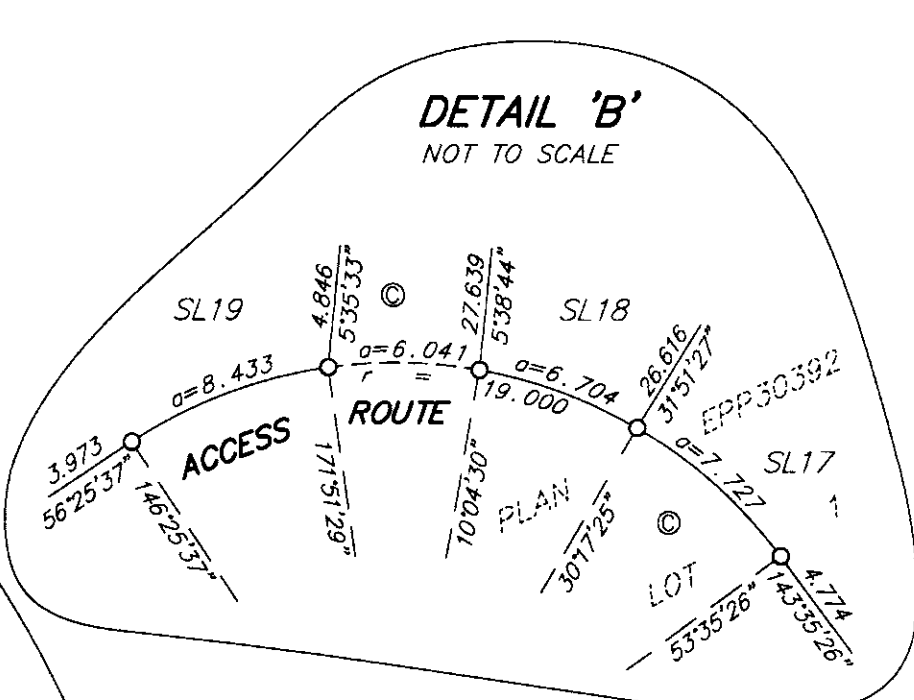
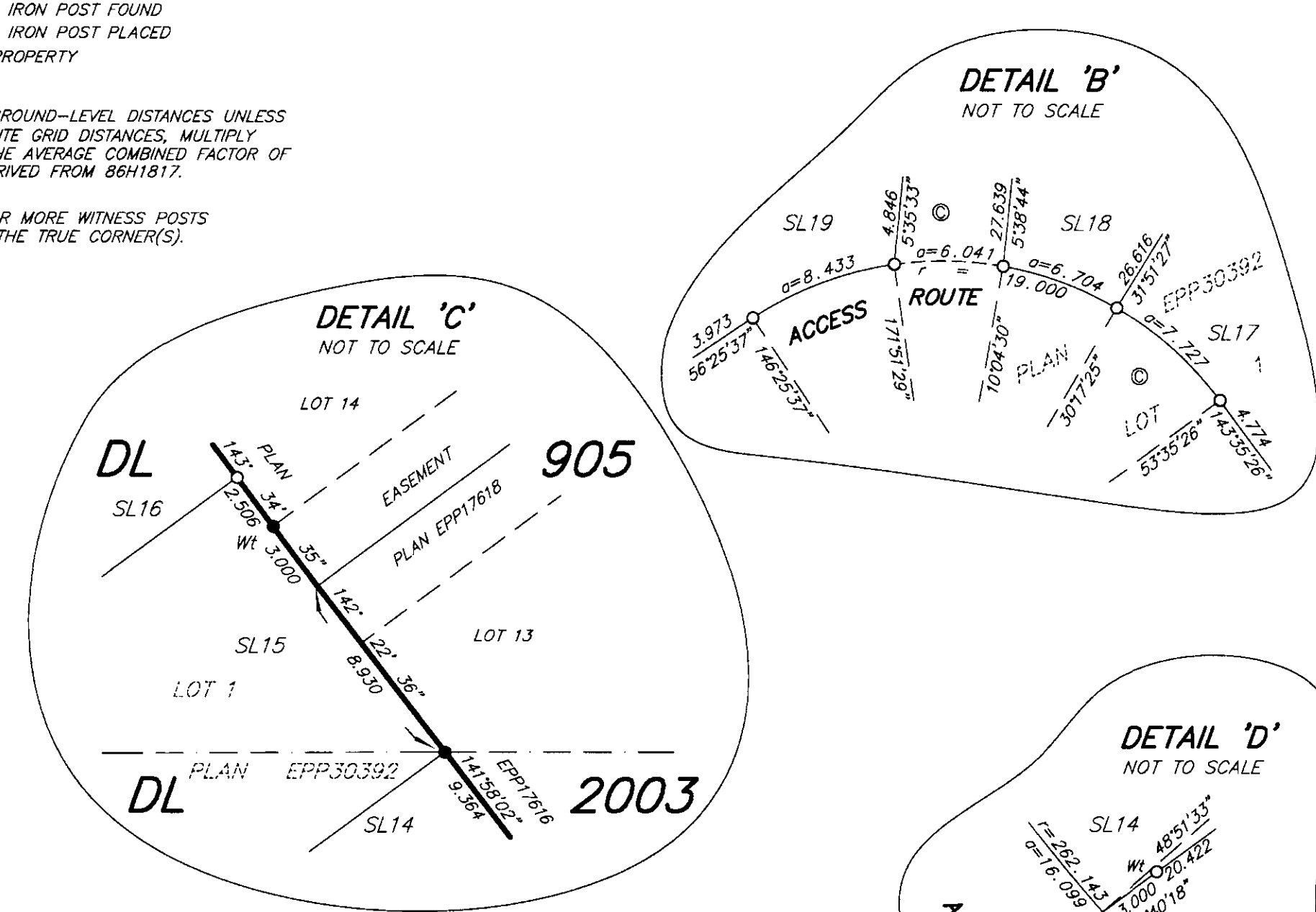
GRID BEARINGS ARE DERIVED FROM PREVIOUSLY INTEGRATED PLAN EPP30392.

- DENOTES STANDARD IRON POST FOUND
- DENOTES STANDARD IRON POST PLACED
- ⊙ DENOTES COMMON PROPERTY

THIS PLAN SHOWS HORIZONTAL GROUND-LEVEL DISTANCES UNLESS OTHERWISE SPECIFIED TO COMPUTE GRID DISTANCES. MULTIPLE GROUND-LEVEL DISTANCES BY THE AVERAGE COMBINED FACTOR OF 0.9995022 WHICH HAS BEEN DERIVED FROM 864/861.7.

NOTE: THIS PLAN SHOWS ONE OR MORE WITNESS POSTS WHICH ARE NOT SET ON THE TRUE CORNER(S).

NOTE:  
⊙ TOTAL AREA = 4281.2 m<sup>2</sup>



CIVIC ADDRESS	LOT
SL1	101-4303 UNIVERSITY HEIGHTS DRIVE
SL2	102-4303 UNIVERSITY HEIGHTS DRIVE
SL3	103-4303 UNIVERSITY HEIGHTS DRIVE
SL4	104-4303 UNIVERSITY HEIGHTS DRIVE
SL5	105-4303 UNIVERSITY HEIGHTS DRIVE
SL6	106-4303 UNIVERSITY HEIGHTS DRIVE
SL7	107-4303 UNIVERSITY HEIGHTS DRIVE
SL8	108-4303 UNIVERSITY HEIGHTS DRIVE
SL9	109-4303 UNIVERSITY HEIGHTS DRIVE
SL10	110-4303 UNIVERSITY HEIGHTS DRIVE
SL11	111-4303 UNIVERSITY HEIGHTS DRIVE
SL12	112-4303 UNIVERSITY HEIGHTS DRIVE
SL13	113-4303 UNIVERSITY HEIGHTS DRIVE
SL14	114-4303 UNIVERSITY HEIGHTS DRIVE
SL15	115-4303 UNIVERSITY HEIGHTS DRIVE
SL16	116-4303 UNIVERSITY HEIGHTS DRIVE
SL17	117-4303 UNIVERSITY HEIGHTS DRIVE
SL18	118-4303 UNIVERSITY HEIGHTS DRIVE
SL19	119-4303 UNIVERSITY HEIGHTS DRIVE
SL20	120-4303 UNIVERSITY HEIGHTS DRIVE
SL21	121-4303 UNIVERSITY HEIGHTS DRIVE
SL22	122-4303 UNIVERSITY HEIGHTS DRIVE
SL23	123-4303 UNIVERSITY HEIGHTS DRIVE
SL24	124-4303 UNIVERSITY HEIGHTS DRIVE
SL25	125-4303 UNIVERSITY HEIGHTS DRIVE

CORRECTED MARCH 27, 2014  
BY CA3463345 Nov. 19, 2013  
NEW VERSION OF PLAN EPS1568  
L. Blaschuk per BS

**PLAN EPS1568**

THIS BARE LAND STRATA PLAN LIES WITHIN THE JURISDICTION OF THE APPROVING OFFICER FOR THE CITY OF PRINCE GEORGE.  
CPG File: SD100426

THE FIELD SURVEY REPRESENTED BY THIS PLAN WAS COMPLETED ON THE 25th DAY OF SEPTEMBER, 2013.  
DALE KEOWN, BCLS 468

THIS PLAN LIES WITHIN THE REGIONAL DISTRICT OF FRASER - FORT GEORGE.

**McElhanney**  
McElhanney Associates  
Land Surveying Ltd.  
Prince George, B.C.  
E-mail: pgm@mcclhannsey.com  
Ph: (250) 561-2229 Fax: (250) 563-1941

DL- 905 & 2003 File No. - 6097-ST  
CPG File No. SD100426

CORRECTED March 27, 2014  
 See CA3463345 Nov. 19, 2013  
 See New Version of Plan EPS1568  
 L. Blaschuk per BB

**PLAN EPS1568**

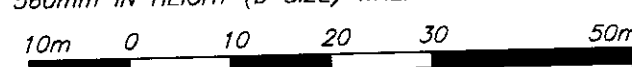
**BARE LAND STRATA PLAN OF LOT 1, DISTRICT  
 LOTS 905 AND 2003, CARIBOO DISTRICT, PLAN EPP30392.**

BCGS 93G.087

PURSUANT TO THE STRATA PROPERTY ACT.

INTEGRATED SURVEY AREA No. 39, PRINCE GEORGE, NAD83 (CSRS)

THE INTENDED PLOT SIZE OF THIS PLAN IS 864mm IN WIDTH BY  
 560mm IN HEIGHT (D SIZE) WHEN PLOTTED AT A SCALE OF 1:750



ALL DISTANCES ARE SHOWN IN METRES AND DECIMALS THEREOF,  
 UNLESS OTHERWISE INDICATED.

**LEGEND**

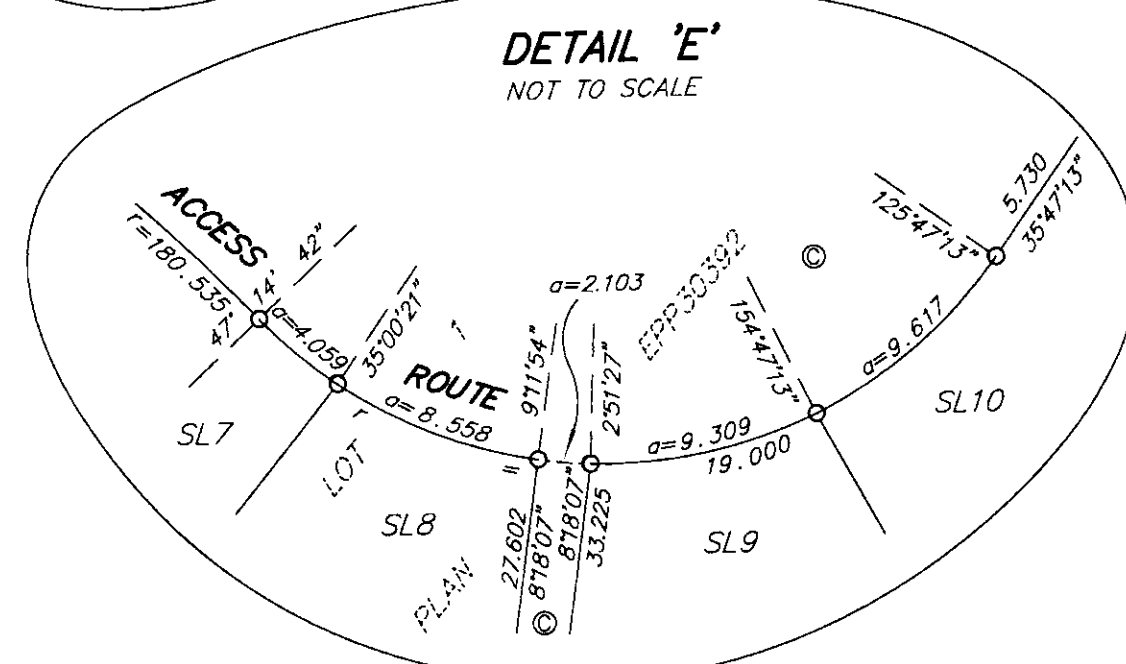
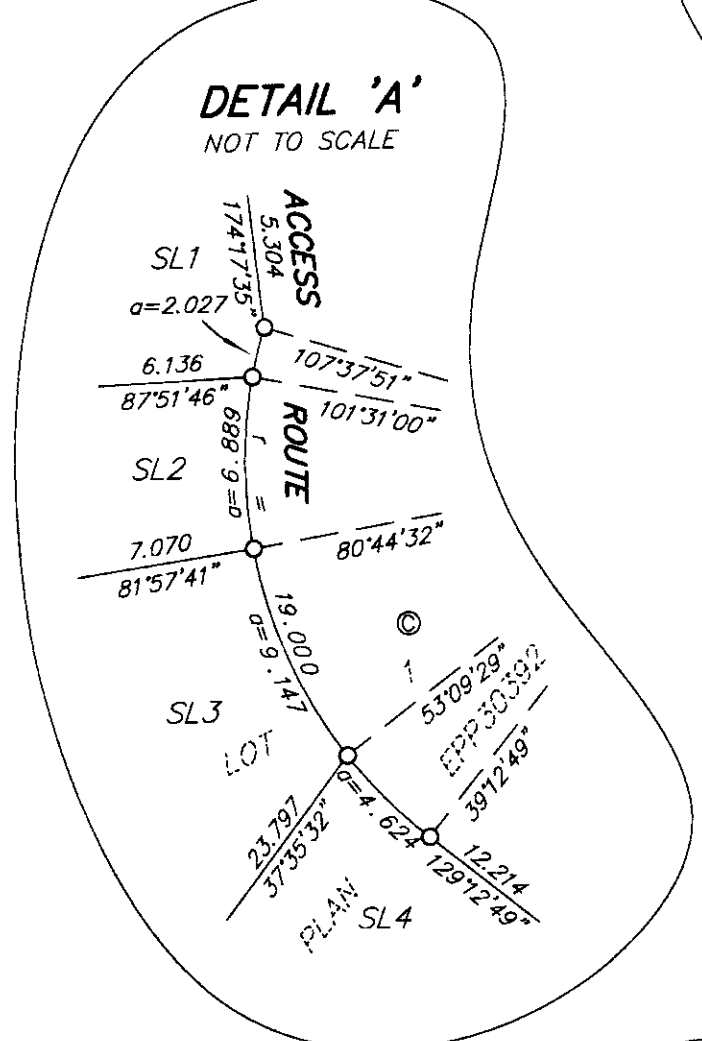
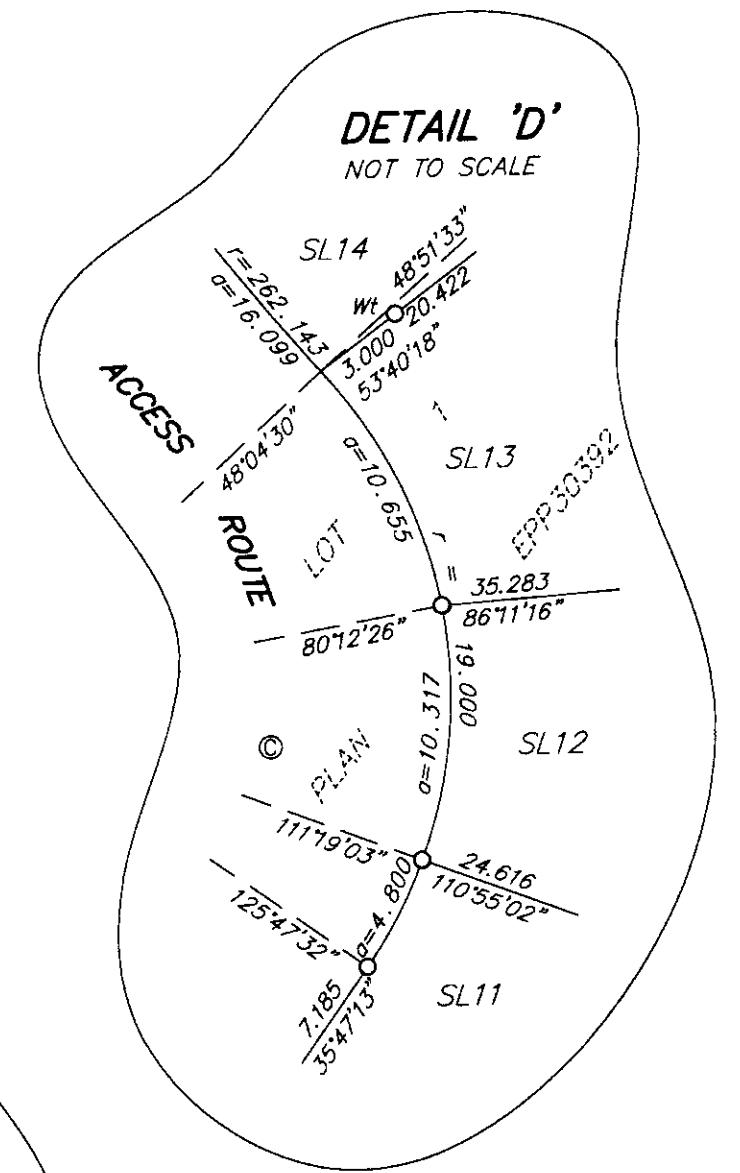
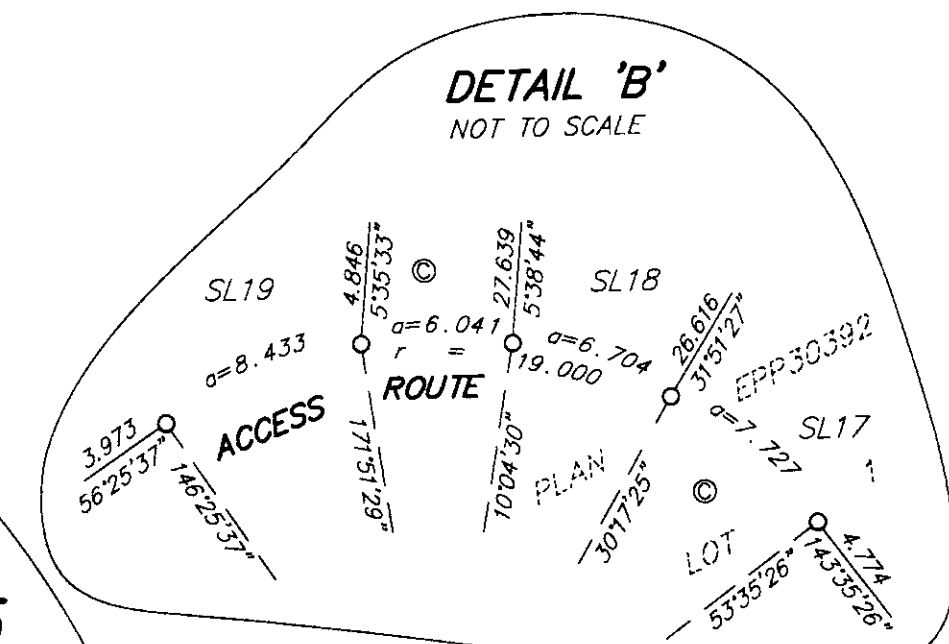
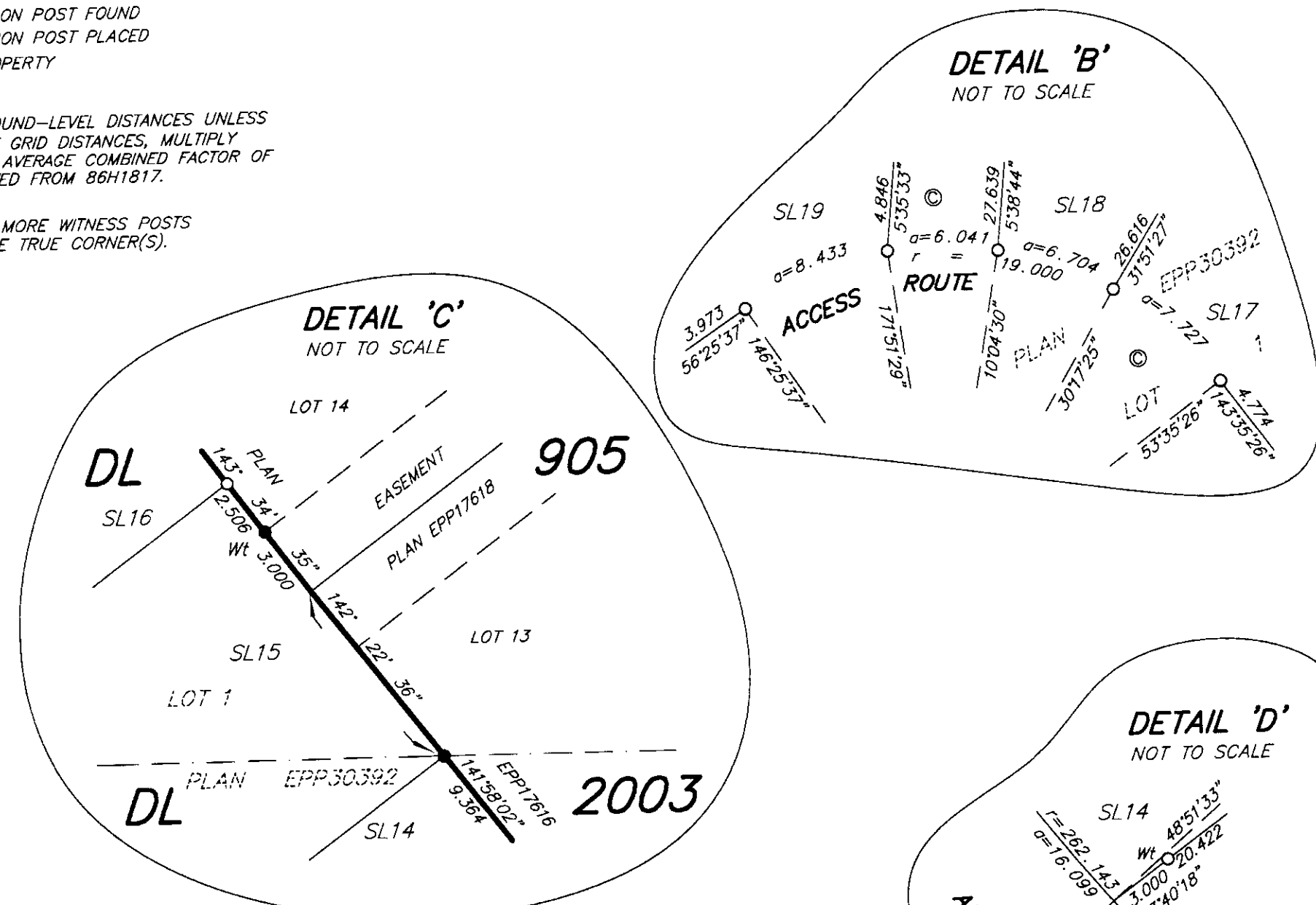
GRID BEARINGS ARE DERIVED FROM PREVIOUSLY  
 INTEGRATED PLAN EPP30392.

- DENOTES STANDARD IRON POST FOUND
- DENOTES STANDARD IRON POST PLACED
- ⊙ DENOTES COMMON PROPERTY

THIS PLAN SHOWS HORIZONTAL GROUND-LEVEL DISTANCES UNLESS  
 OTHERWISE SPECIFIED TO COMPUTE GRID DISTANCES. MULTIPLY  
 GROUND-LEVEL DISTANCES BY THE AVERAGE COMBINED FACTOR OF  
 0.9995022 WHICH HAS BEEN DERIVED FROM 86H1817.

NOTE: THIS PLAN SHOWS ONE OR MORE WITNESS POSTS  
 WHICH ARE NOT SET ON THE TRUE CORNER(S).

NOTE:  
 ● TOTAL AREA = 4281.2m<sup>2</sup>



CIVIC ADDRESS	LOT
SL1	101-4303 UNIVERSITY HEIGHTS DRIVE
SL2	102-4303 UNIVERSITY HEIGHTS DRIVE
SL3	103-4303 UNIVERSITY HEIGHTS DRIVE
SL4	104-4303 UNIVERSITY HEIGHTS DRIVE
SL5	105-4303 UNIVERSITY HEIGHTS DRIVE
SL6	106-4303 UNIVERSITY HEIGHTS DRIVE
SL7	107-4303 UNIVERSITY HEIGHTS DRIVE
SL8	108-4303 UNIVERSITY HEIGHTS DRIVE
SL9	109-4303 UNIVERSITY HEIGHTS DRIVE
SL10	110-4303 UNIVERSITY HEIGHTS DRIVE
SL11	111-4303 UNIVERSITY HEIGHTS DRIVE
SL12	112-4303 UNIVERSITY HEIGHTS DRIVE
SL13	113-4303 UNIVERSITY HEIGHTS DRIVE
SL14	114-4303 UNIVERSITY HEIGHTS DRIVE
SL15	115-4303 UNIVERSITY HEIGHTS DRIVE
SL16	116-4303 UNIVERSITY HEIGHTS DRIVE
SL17	117-4303 UNIVERSITY HEIGHTS DRIVE
SL18	118-4303 UNIVERSITY HEIGHTS DRIVE
SL19	119-4303 UNIVERSITY HEIGHTS DRIVE
SL20	120-4303 UNIVERSITY HEIGHTS DRIVE
SL21	121-4303 UNIVERSITY HEIGHTS DRIVE
SL22	122-4303 UNIVERSITY HEIGHTS DRIVE
SL23	123-4303 UNIVERSITY HEIGHTS DRIVE
SL24	124-4303 UNIVERSITY HEIGHTS DRIVE
SL25	125-4303 UNIVERSITY HEIGHTS DRIVE

THIS BARE LAND STRATA PLAN LIES WITHIN THE JURISDICTION OF  
 THE APPROVING OFFICER FOR THE CITY OF PRINCE GEORGE.  
 CPG File: SD100426

THE FIELD SURVEY REPRESENTED BY THIS PLAN WAS  
 COMPLETED ON THE 25th DAY OF SEPTEMBER, 2013.  
 DALE KEOWN, BCLS 468

THIS PLAN LIES WITHIN THE REGIONAL DISTRICT OF FRASER - FORT GEORGE.

**McElhanney**  
 McElhanney Associates  
 Land Surveying Ltd.  
 Prince George, B.C.  
 E-mail: pgm@mcnelhanney.com  
 Ph: (250) 561-2229 Fax: (250) 563-1941

DL - 905 & 2003	File No. - 6097-ST
CPG File No. SD100426	