

**BARELAND STRATA PLAN OF LOT 25,
DISTRICT LOT 4047, CARIBOO DISTRICT,
PLAN 9543**

BCGS 93G.087



All distances are in metres

The intended plot size of this plan is 559 mm in width
by 432 mm in height when plotted at scale 1:500
(use C size sheet)

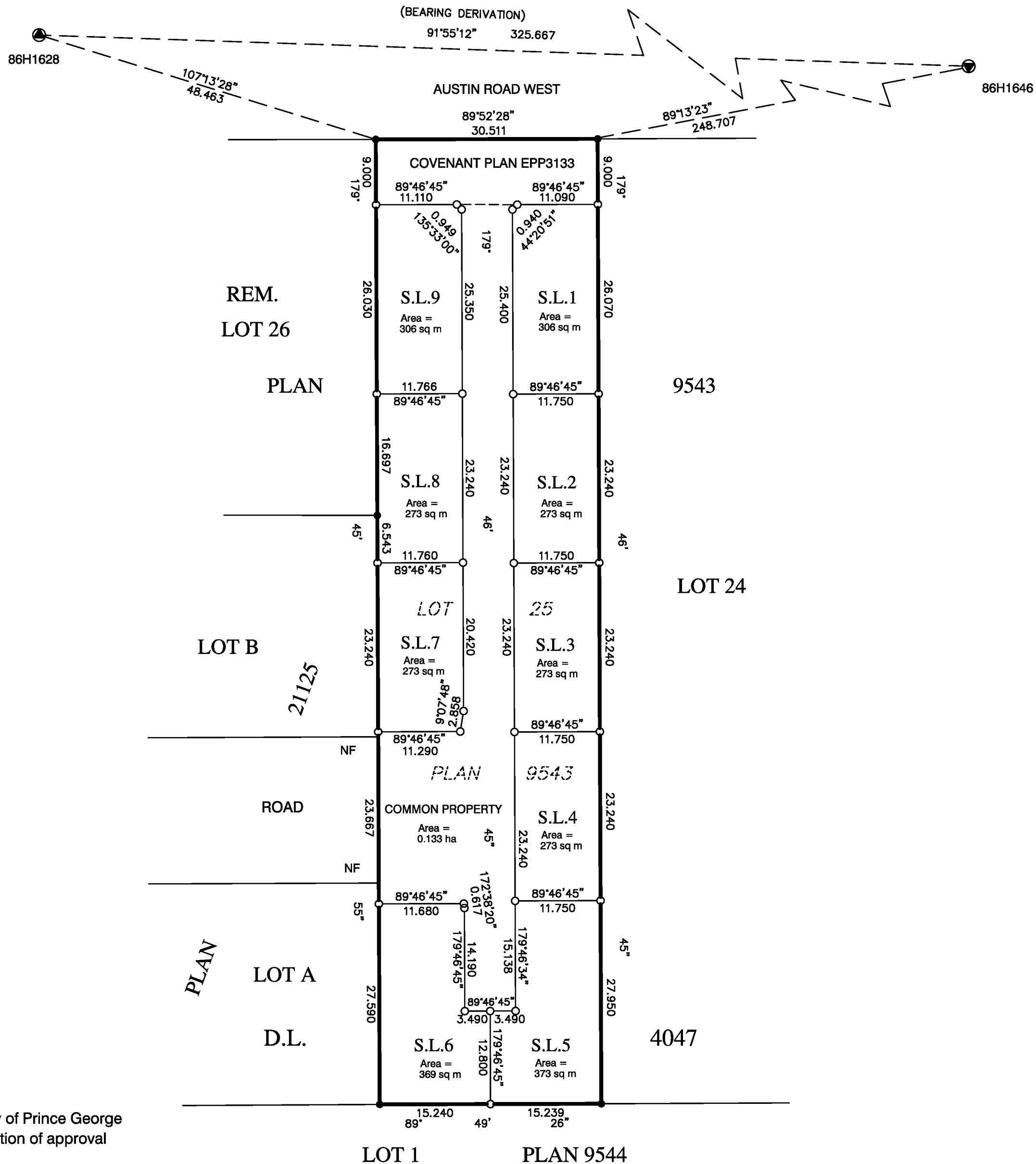
LEGEND

- Denotes Standard Iron Post Placed
- Denotes Standard Iron Post Found
- ⊙ Integrated Survey Area Control Monument

Grid bearings are derived from observations between control monuments 86H1628 and 86H1646, Integrated Survey Area Number 39, City of Prince George.

This plan shows ground level measured distances.
Prior to computation of U.T. M. coordinates
multiply by combined factor of 0.9994848

Civic Address:
4397 Austin Road West
Prince George, BC



A covenant in the name of the City of Prince George pursuant to Section 219 is a condition of approval for subdivision

This plan lies within the jurisdiction of the Approving Officer for the City of Prince George

**R.E. GOOK & ASSOCIATES
B.C. & CANADA LAND SURVEYORS**

886 VANCOUVER STREET
PRINCE GEORGE, B.C. V2L 2P5
PHONE: 250-564-4242
FAX: 250-564-5343

FILE:09-0544PG
e-mail regook@northern-surveys.com

This plan lies within the Regional District of Fraser - Fort George

The field survey represented by this plan was completed by Richard E. Gook, B.C.L.S. on the 11th day of June, 2009