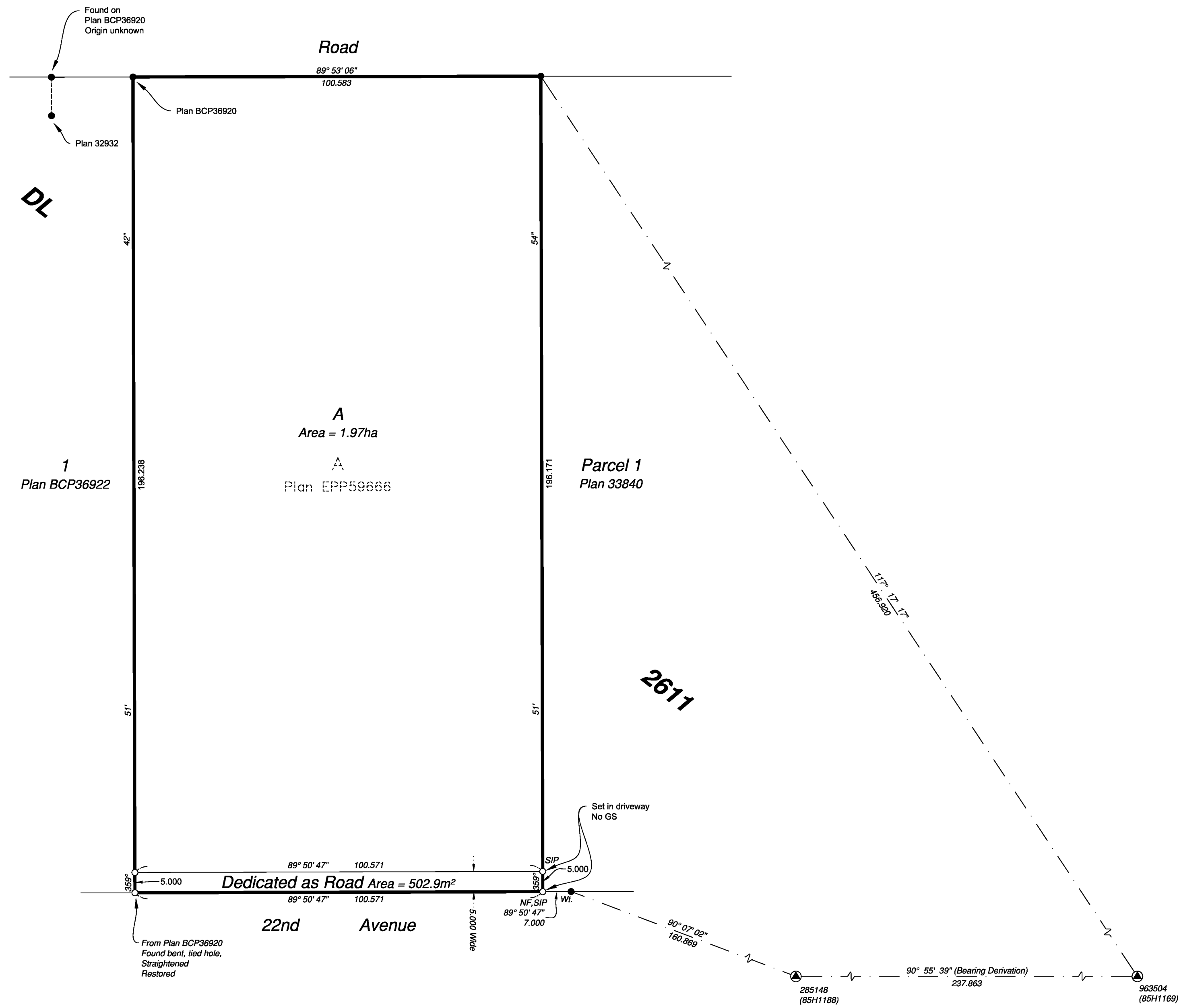


**PLAN EPP99871**



**Reference Plan of Lot A,  
District Lot 2611, Cariboo  
District, Plan EPP59666**

Pursuant to Section 100(1)(a) and 107(1)(a) of the Land Title Act

Integrated survey area No. 39 Prince George, BC,  
NAD83 (CSRS) 4.0.0.BC.1

BCGS 93G.096



The intended plot size of this plan is 559mm in width by 432mm in height (C size) when plotted at a scale of 1:750.

All distances are in metres and decimals thereof.

Grid bearings are derived from observations between geodetic control monuments 285148 and 963504 and are referred to the central meridian of UTM Zone10 (123° west longitude).

The UTM coordinates and estimated absolute accuracy achieved have been derived from mascot published coordinates and standard deviations for geodetic control monuments 285148 and 963504.

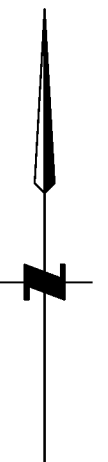
This plan shows horizontal ground-level distances unless otherwise specified. To compute grid distances, multiply ground-level distances by the average combined factor of 0.9995095 which has been derived from control monument 285148.

**Note:**

This plan shows one or more witness posts which are not set on the true corner(s).  
Wooden guard stakes set or found at every corner unless otherwise noted.

**Legend**

Found	Placed	Description
▲		Control Monument
●	○	Standard Iron Post
SIP		Short Iron Post
GS		Wooden Guard Stake
CSF		Combined Scale Factor
EAA		Estimated Absolute Accuracy



Georeferencing Positions UTM Coordinates, Zone 10, NAD 83 (CSRS), 4.0.0.BC.1				
Station	Northing	Easting	EAA	CSF
285148	5972556.82	512995.36	0.10	0.9995095
963504	5972548.82	513232.97	0.10	0.9995099

CPG File No.: BP 040522  
BP 040713

The field survey represented by this plan was completed on the 31st day of January, 2020.

Scott Maguire, BCLS 903

This plan lies within the Regional District of Fraser-Fort George  
This plan lies within the jurisdiction of the approving officer for the City of Prince George.

File: 18048-REF  
**KOEHLER LAND SURVEYING INC.**  
1698 Lyon Street South  
Prince George, BC V2N 1T3  
Tel: (250) 614-9703