

# STATUTORY RIGHT OF WAY PLAN

PLAN EPP99426

Over Part of Lot C District Lot 8180  
Cariboo District Plan EPP96883

Pursuant to Section 113 of the Land Title Act.

BCGS 93G.087

This plan lies within Integrated Survey Area No. 39,  
Prince George, NAD83 (CSRS) 4.0.0.BC.1



The intended plot size of this plan is 560mm in width by 432mm in height (C size) when plotted at a scale of 1:1000.

Grid bearings are derived from observations between geodetic control monuments 85H1126 and 85H1130 and are referred to the central meridian of UTM Zone 10 North.

The UTM coordinates and estimated absolute accuracy achieved are derived from the MASCOT published coordinates and standard deviations for geodetic control monuments 85H1126 and 85H1130.

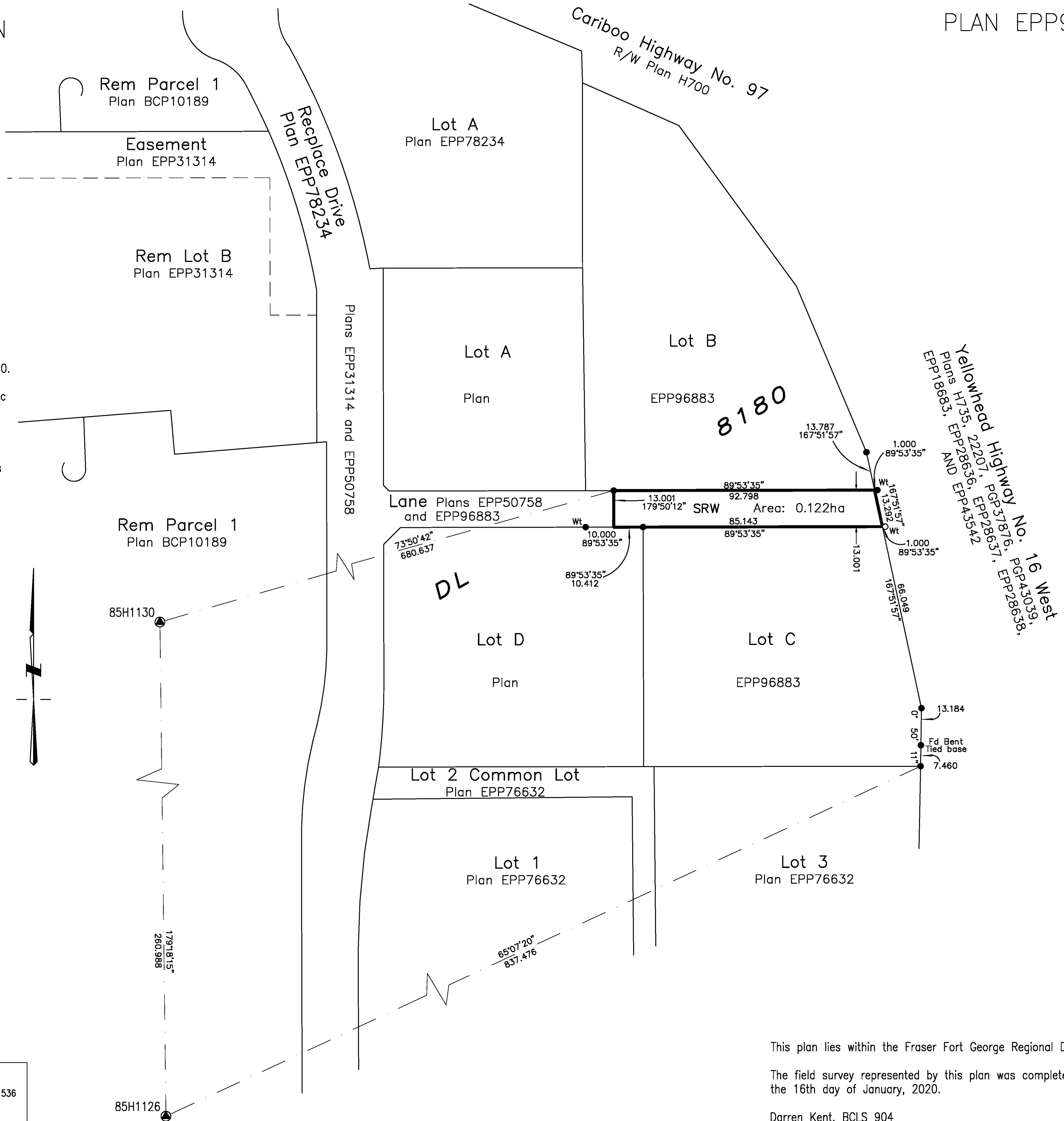
This plan shows horizontal ground-level distances, unless otherwise specified. To compute grid distances, multiply ground-level distances by the average combined factor of 0.999512. The average combined factor has been determined based on geodetic control monuments 85H1126 and 85H1130.

Note:  
This plan shows one or more witness posts which are not set on the true corner(s).

LEGEND:

Symbols		Description
Found	Placed	
●	○	Standard Iron Post
⊙		Control Monument
EAA No.		Estimated Absolute Accuracy Number

UTM Zone 10 Coordinates (Published) NAD83 (CSRS) 4.0.0.BC.1			
Station	Northing	Easting	EAA
85H1126	5971541.21	514495.91	0.10
85H1130	5971802.05	514492.75	0.10



HBH File No. CPG1902-SRW



Prince George  
203-1300 1st Ave.  
Prince George, BC V2L 2Y3  
250.640.2287

Smithers  
3750 1st Ave. PO Box 536  
Smithers, BC V0J 2N0  
250.847.3808

www.HBHLandSurveying.com

This plan lies within the Fraser Fort George Regional District.

The field survey represented by this plan was completed on the 16th day of January, 2020.

Darren Kent, BCLS 904