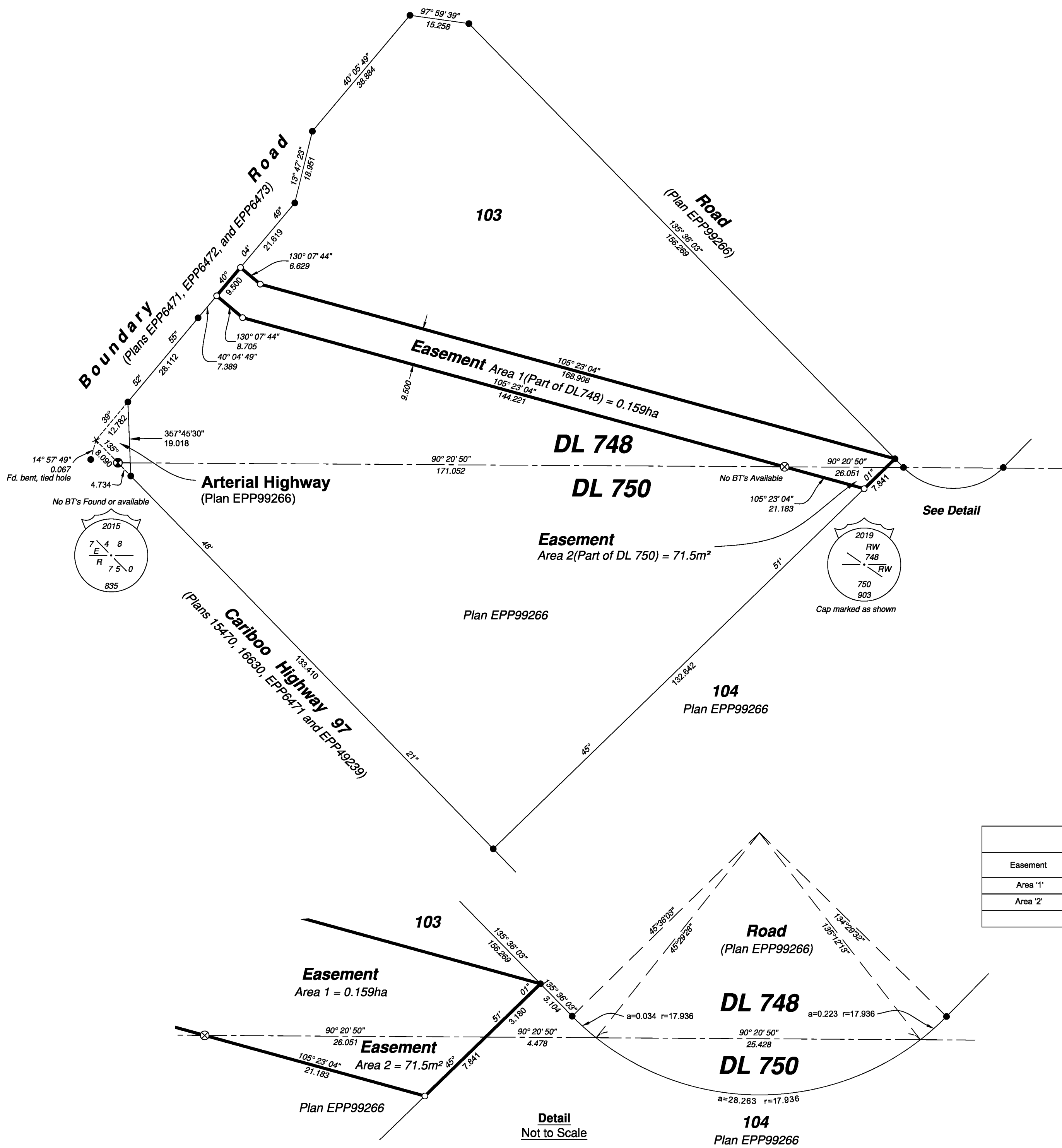
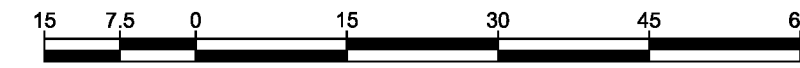


PLAN EPP99267



Reference Plan of Easement over part of Lot 103, District Lots 748 and 750, Cariboo District, Plan EPP99266

Pursuant to Section 99(1)(e) of the Land Title Act.
Integrated survey area No. 39 Prince George, BC,
NAD83 (CSRS) 4.0.0.BC.1
BCGS 93G.087



The intended plot size of this plan is 559mm in width by 432mm in height (C size) when plotted at a scale of 1:750.

All distances are in metres and decimals thereof.

Grid bearings are derived from Plan EPP99266 and are referred to the central meridian of UTM Zone 10 (123° west longitude).

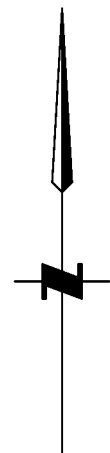
This plan shows horizontal ground-level distances unless otherwise specified. To compute grid distances, multiply ground-level distances by the average combined factor of 0.99950145 which has been derived from Plan EPP99266.

The UTM coordinates and estimated absolute accuracy achieved are derived from Plan EPP99266.

Note:
Some posts are exaggerated for clarity.
No wooden guard stakes set at posts at time of survey due to ongoing construction.

Legend

Symbols	Description
Found: Placed:	Standard Capped Post
Found: Placed:	Standard Iron Post
CSF	Combined Scale Factor



Book of Reference		
Easement	Description	Area required
Area '1'	Part of Lot 103, District Lot 748, Cariboo District, Plan EPP99266.	0.159 ha
Area '2'	Part of Lot 103, District Lot 750, Cariboo District, Plan EPP99266.	71.5 m²
Total Area		0.166 ha

City of Prince George File No.: SD 100576

The field survey represented by this plan was completed on the 11th day of December, 2019.

Scott Maguire, BCLS 903

This plan lies within the Regional District of Fraser-Fort George

File: 19126-REF

KOEHLER LAND SURVEYING INC.
1698 Lyon Street South
Prince George, BC V2N 1T3
Tel: (250) 614-9703