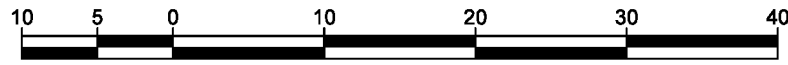


REFERENCE PLAN OF EASEMENT OVER PART OF LOTS 1 TO 5 INCLUSIVE AND 11 TO 16 INCLUSIVE, DISTRICT LOT 2425, CARIBOO DISTRICT, PLAN EPP98524.

PLAN EPP99041

PURSUANT TO SECTION 99(1)(e) OF THE LAND TITLE ACT.
FOR EASEMENT PURPOSES

BCGS 93J.006



THE INTENDED PLOT SIZE OF THIS PLAN IS 560mm IN WIDTH BY 432mm IN HEIGHT (C SIZE) WHEN PLOTTED AT A SCALE OF 1:500.

ALL DISTANCES ARE IN METRES AND DECIMALS THEREOF.

GRID BEARINGS ARE DERIVED FROM OBSERVATIONS TO GEODETIC CONTROL MONUMENTS 86H1588 AND 86H1610.

THE UTM COORDINATES AND ESTIMATED ABSOLUTE ACCURACY ACHIEVED HAVE BEEN DERIVED FROM MASCOT PUBLISHED COORDINATES AND STANDARD DEVIATIONS FOR GEODETIC CONTROL MONUMENT 86H1610.

THIS PLAN SHOWS HORIZONTAL GROUND-LEVEL DISTANCES UNLESS OTHERWISE SPECIFIED. TO COMPUTE GRID DISTANCES, MULTIPLY GROUND-LEVEL DISTANCES BY THE COMBINED FACTOR OF 0.9994840 WHICH HAS BEEN DERIVED FROM GEODETIC CONTROL MONUMENT 86H1610.

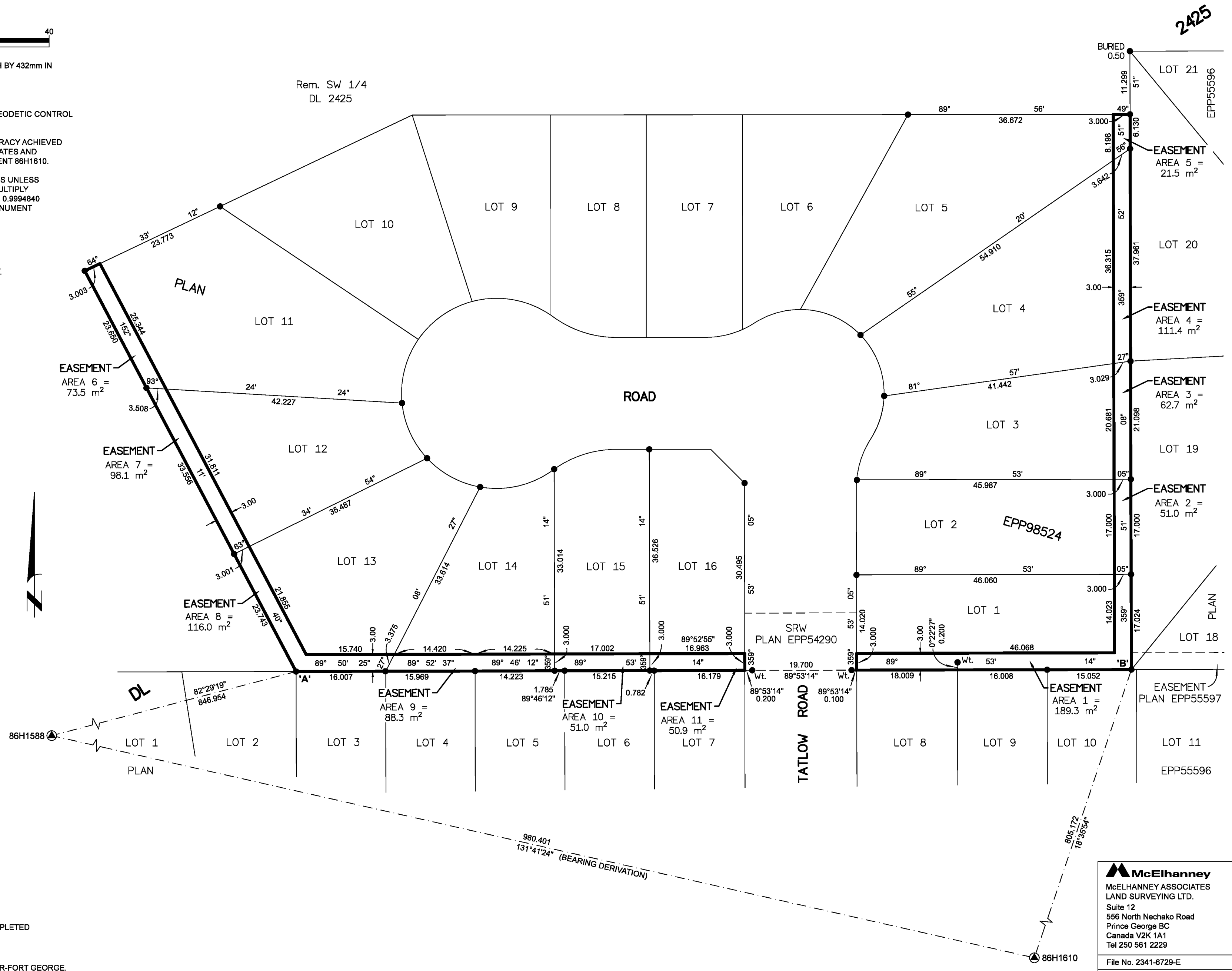
NOTE:
THIS PLAN SHOWS ONE OR MORE WITNESS POSTS WHICH ARE NOT SET ON THE TRUE CORNER(S).
SOME POSTS AND LINES ARE EXAGGERATED FOR CLARITY.

LEGEND

SYMBOLS		DESCRIPTION
FOUND	PLACED	
		CONTROL MONUMENT
		STANDARD IRON POST
EAA		ESTIMATED ABSOLUTE ACCURACY

GEOREFERENCING POSITIONS UTM COORDINATES, ZONE 10, NAD 83 (CSRS), 4.0.0.BC.1			
STATION	NORTHING	EASTING	EAA
Fd. IP 'A'	5984907.74	511935.93	0.09
Fd. IP 'B'	5984908.08	512085.08	0.09

BOOK OF REFERENCE	
DESCRIPTION	AREA
LOT 1, DISTRICT LOT 2425, CARIBOO DISTRICT, PLAN EPP98524.	AREA 1 = 189.3 m ²
LOT 2, DISTRICT LOT 2425, CARIBOO DISTRICT, PLAN EPP98524.	AREA 2 = 51.0 m ²
LOT 3, DISTRICT LOT 2425, CARIBOO DISTRICT, PLAN EPP98524.	AREA 3 = 62.7 m ²
LOT 4, DISTRICT LOT 2425, CARIBOO DISTRICT, PLAN EPP98524.	AREA 4 = 111.4 m ²
LOT 5, DISTRICT LOT 2425, CARIBOO DISTRICT, PLAN EPP98524.	AREA 5 = 21.5 m ²
LOT 11, DISTRICT LOT 2425, CARIBOO DISTRICT, PLAN EPP98524.	AREA 6 = 73.5 m ²
LOT 12, DISTRICT LOT 2425, CARIBOO DISTRICT, PLAN EPP98524.	AREA 7 = 98.1 m ²
LOT 13, DISTRICT LOT 2425, CARIBOO DISTRICT, PLAN EPP98524.	AREA 8 = 116.0 m ²
LOT 14, DISTRICT LOT 2425, CARIBOO DISTRICT, PLAN EPP98524.	AREA 9 = 88.3 m ²
LOT 15, DISTRICT LOT 2425, CARIBOO DISTRICT, PLAN EPP98524.	AREA 10 = 51.0 m ²
LOT 16, DISTRICT LOT 2425, CARIBOO DISTRICT, PLAN EPP98524.	AREA 11 = 50.9 m ²
TOTAL AREA	913.7 m ²



THE FIELD SURVEY REPRESENTED BY THIS PLAN WAS COMPLETED ON THE 3rd DAY OF DECEMBER, 2019
SHAUNA C. GOERTZEN, BCLS 798

THIS PLAN LIES WITHIN THE REGIONAL DISTRICT OF FRASER-FORT GEORGE.

McElhanney
McELHANNEY ASSOCIATES
LAND SURVEYING LTD.
Suite 12
556 North Nechako Road
Prince George BC
Canada V2K 1A1
Tel 250 561 2229
File No. 2341-6729-E