

CORRECTED THIS 1st DAY OF APRIL, 2021.
SEE CA8893707.

**Explanatory Plan of Easement
over parts of Lots 29 through 39,
inclusive, District Lot 1014,
Cariboo District, Plan EPP96993**

Pursuant to Section 99(1)(e) of the Land Title Act.
BCGS 93G.087
Integrated survey area No. 39 Prince George, BC,
NAD83 (CSRS) 4.0.0.BC.1

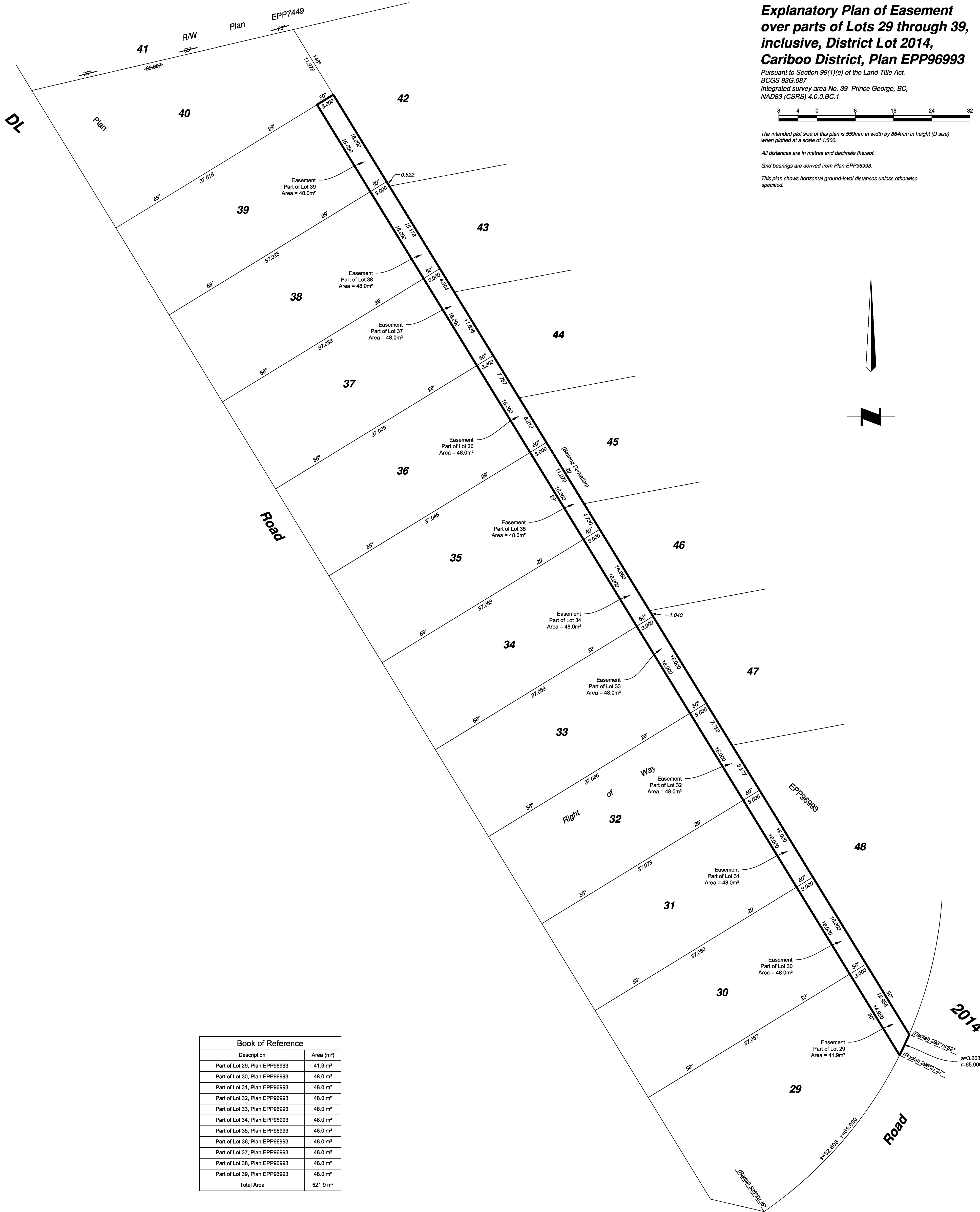
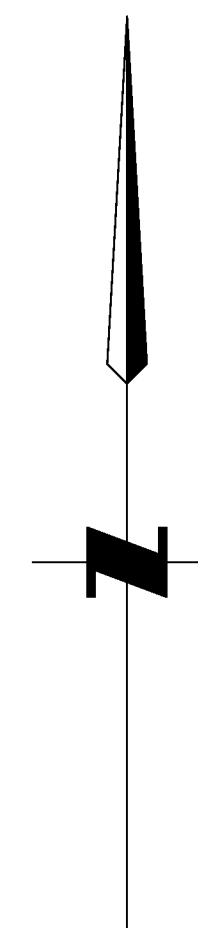


The intended plot size of this plan is 559mm in width by 864mm in height (D size)
when plotted at a scale of 1:300.

All distances are in metres and decimals thereof.

Grid bearings are derived from Plan EPP96993.

This plan shows horizontal ground-level distances unless otherwise
specified.



Book of Reference	
Description	Area (m ²)
Part of Lot 29, Plan EPP96993	41.9 m ²
Part of Lot 30, Plan EPP96993	48.0 m ²
Part of Lot 31, Plan EPP96993	48.0 m ²
Part of Lot 32, Plan EPP96993	48.0 m ²
Part of Lot 33, Plan EPP96993	48.0 m ²
Part of Lot 34, Plan EPP96993	48.0 m ²
Part of Lot 35, Plan EPP96993	48.0 m ²
Part of Lot 36, Plan EPP96993	48.0 m ²
Part of Lot 37, Plan EPP96993	48.0 m ²
Part of Lot 38, Plan EPP96993	48.0 m ²
Part of Lot 39, Plan EPP96993	48.0 m ²
Total Area	521.9 m²

CPG File No.: SD100485
This plan is based on the following Land Title and
Survey Authority of BC records:
Plan EPP96993
Scott Maguire, BCLS 903
24th day of June, 2020
This plan lies within the Regional District of Fraser-Fort George

File: 19007-EASE-R2
KOHLER LAND SURVEYING INC.
1638 Lyon Street South
Prince George, BC V2N 1T3
Tel: (250) 614-9703