

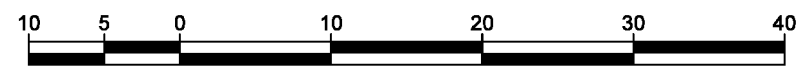
REFERENCE PLAN OF EASEMENT OVER PART OF PARCEL A (BEING A CONSOLIDATION OF LOTS A AND B, SEE BB1267286), DISTRICT LOT 4221, CARIBOO DISTRICT, PLAN PGP36337.

PLAN EPP98525

PURSUANT TO SECTION 99(1)(e) OF THE LAND TITLE ACT. FOR EASEMENT PURPOSES

THIS PLAN LIES WITHIN INTEGRATED SURVEY AREA No. 39 PRINCE GEORGE, BC, NAD83 (CSRS) 4.0.0.BC.1

BCGS 93G.097



THE INTENDED PLOT SIZE OF THIS PLAN IS 560mm IN WIDTH BY 432mm IN HEIGHT (C SIZE) WHEN PLOTTED AT A SCALE OF 1:500.

ALL DISTANCES ARE IN METRES AND DECIMALS THEREOF.

GRID BEARINGS ARE DERIVED FROM OBSERVATIONS BETWEEN GEODETIC CONTROL MONUMENTS 86H1775 AND 86H1759.

THE UTM COORDINATES AND ESTIMATED ABSOLUTE ACCURACY ACHIEVED HAVE BEEN DERIVED FROM MASCOT PUBLISHED COORDINATES AND STANDARD DEVIATIONS FOR GEODETIC CONTROL MONUMENT 86H1775.

THIS PLAN SHOWS HORIZONTAL GROUND-LEVEL DISTANCES UNLESS OTHERWISE SPECIFIED. TO COMPUTE GRID DISTANCES, MULTIPLY GROUND-LEVEL DISTANCES BY THE COMBINED FACTOR OF 0.9995090 WHICH HAS BEEN DERIVED FROM CONTROL MONUMENT 86H1775.

NOTE: THIS PLAN SHOWS ONE OR MORE WITNESS POSTS WHICH ARE NOT SET ON THE TRUE CORNER(S). SOME POSTS AND LINES ARE EXAGGERATED FOR CLARITY.

LEGEND

SYMBOLS	DESCRIPTION
FOUND	PLACED
	CONTROL MONUMENT
	STANDARD IRON POST
EAA	ESTIMATED ABSOLUTE ACCURACY

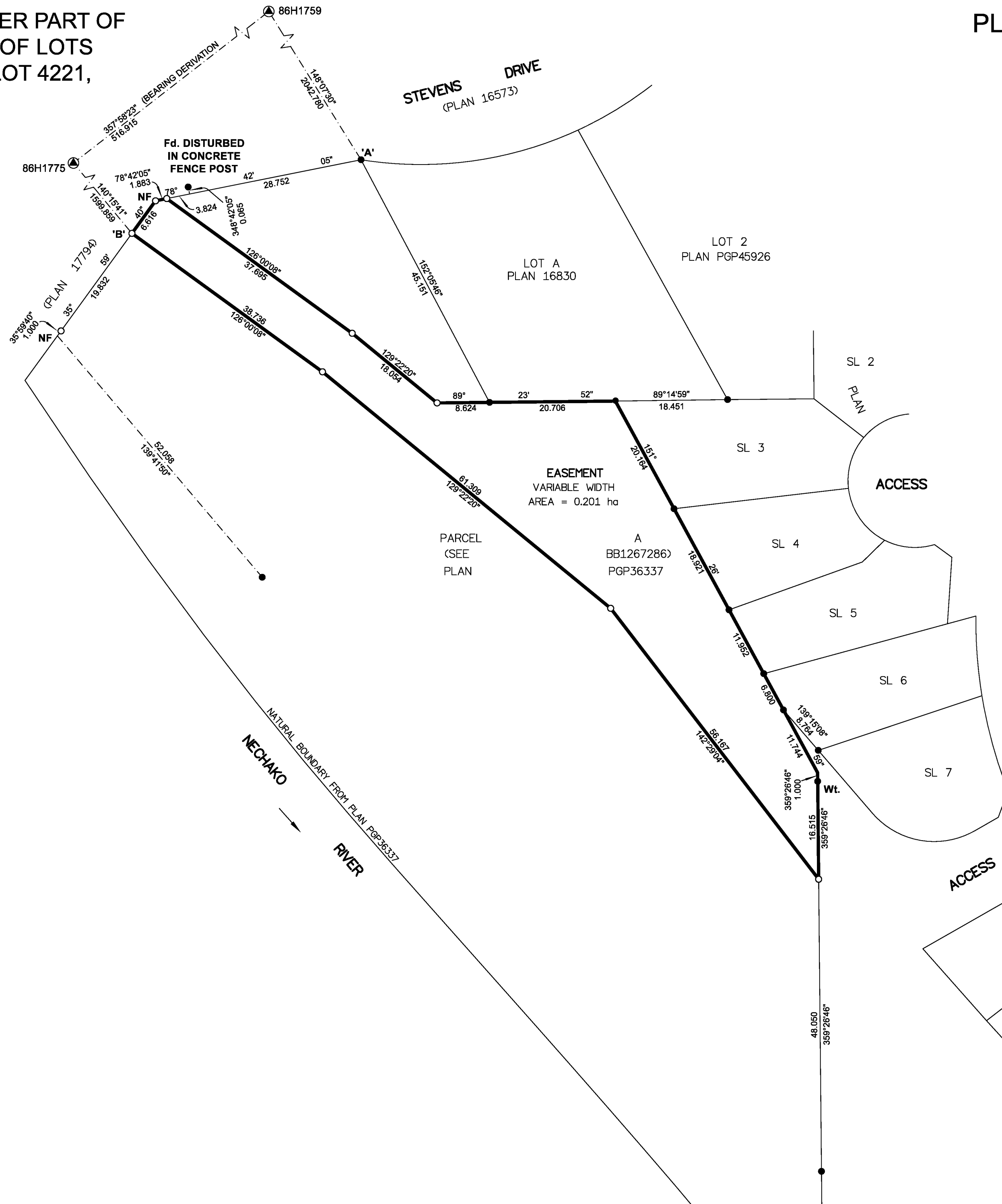
GEOREFERENCING POSITIONS			
UTM COORDINATES,			
ZONE 10, NAD 83 (CSRS), 4.0.0.BC.1			
STATION	NORTHING	EASTING	EAA
Fd. IP 'A'	5977127.54	513279.46	0.09
Pl. IP 'B'	5977115.44	513241.80	0.09



INSPECTED UNDER THE LAND TITLE ACT ON THE 3rd DAY OF NOVEMBER, 2020.

THE FIELD SURVEY REPRESENTED BY THIS PLAN WAS COMPLETED ON THE 10th DAY OF DECEMBER, 2019
SHAUNA C. GOERTZEN, BCLS 798

THIS PLAN LIES WITHIN THE REGIONAL DISTRICT OF FRASER-FORT GEORGE.



McElhanney
 McELHANNEY ASSOCIATES
 LAND SURVEYING LTD.
 Suite 12
 556 North Nechako Road
 Prince George BC
 Canada V2K 1A1
 Tel 250 561 2229
 File No. 2341-6708-E