

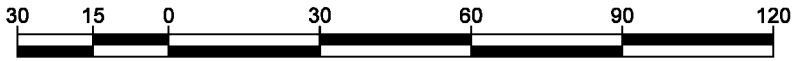
STATUTORY RIGHT OF WAY PLAN OVER PART OF LOT 1, DISTRICT LOT 2431, CARIBOO DISTRICT, PLAN 23057.

PLAN EPP98510

PURSUANT TO SECTION 113 OF THE LAND TITLE ACT.

THIS PLAN LIES WITHIN INTEGRATED SURVEY AREA
No. 39 PRINCE GEORGE, BC, NAD83 (CSRS) 4.0.0.BC.1

BCGS 93J.006



THE INTENDED PLOT SIZE OF THIS PLAN IS 280mm IN WIDTH BY 432mm IN HEIGHT (B SIZE) WHEN PLOTTED AT A SCALE OF 1:1500.

ALL DISTANCES ARE IN METRES AND DECIMALS THEREOF.

GRID BEARINGS ARE DERIVED FROM GNSS OBSERVATIONS AND ARE REFERRED TO THE CENTRAL MERIDIAN OF UTM ZONE 10.

THE UTM COORDINATES AND ESTIMATED ABSOLUTE ACCURACY ACHIEVED HAVE BEEN DERIVED FROM PRINCE GEORGE ACTIVE CONTROL POINT 106526.

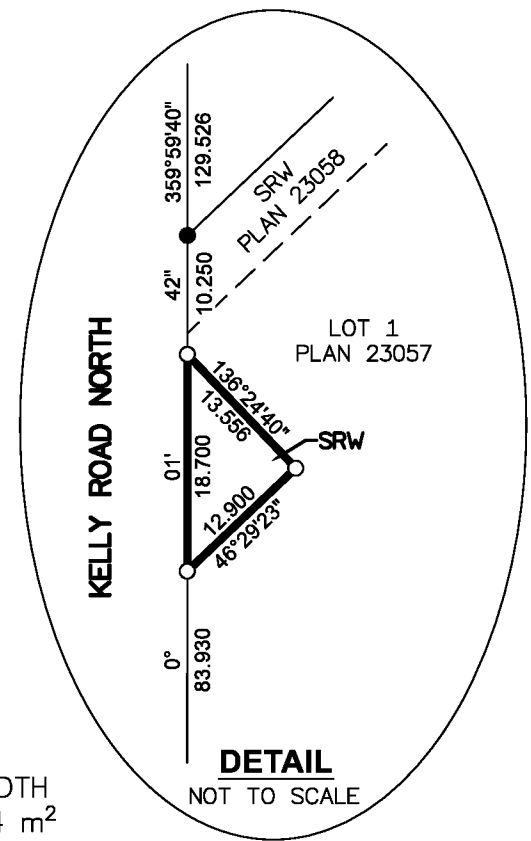
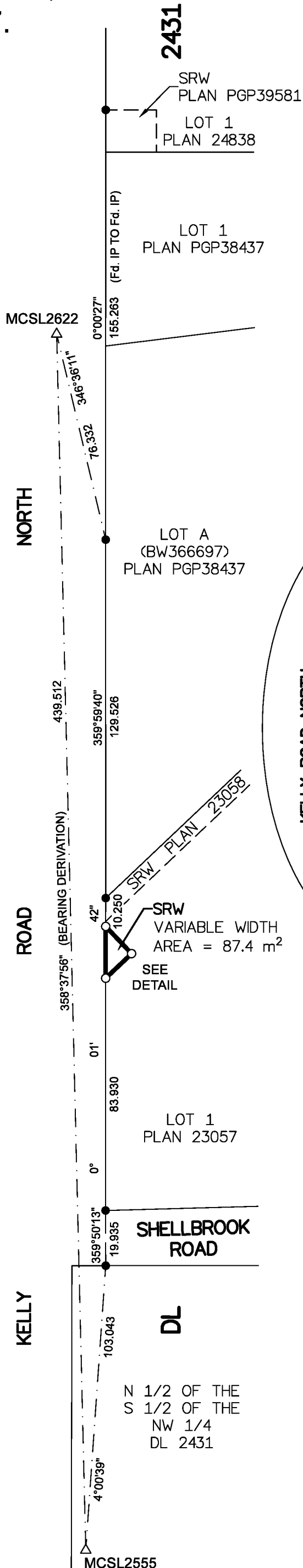
THIS PLAN SHOWS HORIZONTAL GROUND-LEVEL DISTANCES UNLESS OTHERWISE SPECIFIED. TO COMPUTE GRID DISTANCES, MULTIPLY GROUND-LEVEL DISTANCES BY THE AVERAGE COMBINED FACTOR OF 0.9994897. THE AVERAGE COMBINED FACTOR HAS BEEN DETERMINED BASED ON AN AVERAGE ELLIPSOIDAL ELEVATION OF 718.68 METRES.

LEGEND

SYMBOLS		DESCRIPTION
FOUND	PLACED	
●	○	STANDARD IRON POST
	△	TRAVERSE HUB
EAA		ESTIMATED ABSOLUTE ACCURACY

GEOREFERENCING POSITIONS UTM COORDINATES, ZONE 10, NAD 83 (CSRS), 4.0.0.BC.1			
STATION	NORTHING	EASTING	EAA
MCSL2622	5987873.64	513021.58	0.05
MCSL2555	5987434.48	513032.06	0.05

BOOK OF REFERENCE		
PID	DESCRIPTION	AREA
008-640-076	LOT 1, DL 2431, CARIBOO DISTRICT, PLAN 23057.	87.4 m ²



THE FIELD SURVEY REPRESENTED BY THIS PLAN WAS COMPLETED
ON THE 13th DAY OF NOVEMBER, 2019
SHAUNA C. GOERTZEN, BCLS 798

THIS PLAN LIES WITHIN THE REGIONAL DISTRICT OF FRASER-FORT GEORGE.

McElhanney
McELHANNEY ASSOCIATES
LAND SURVEYING LTD.
Suite 12
556 North Nechako Road
Prince George BC
Canada V2K 1A1
Tel 250 561 2229

File No. 2341-6726-SRW