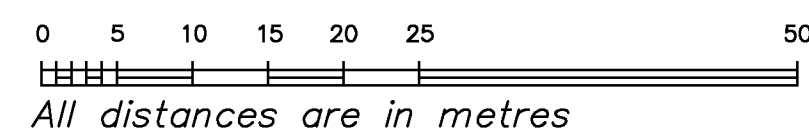
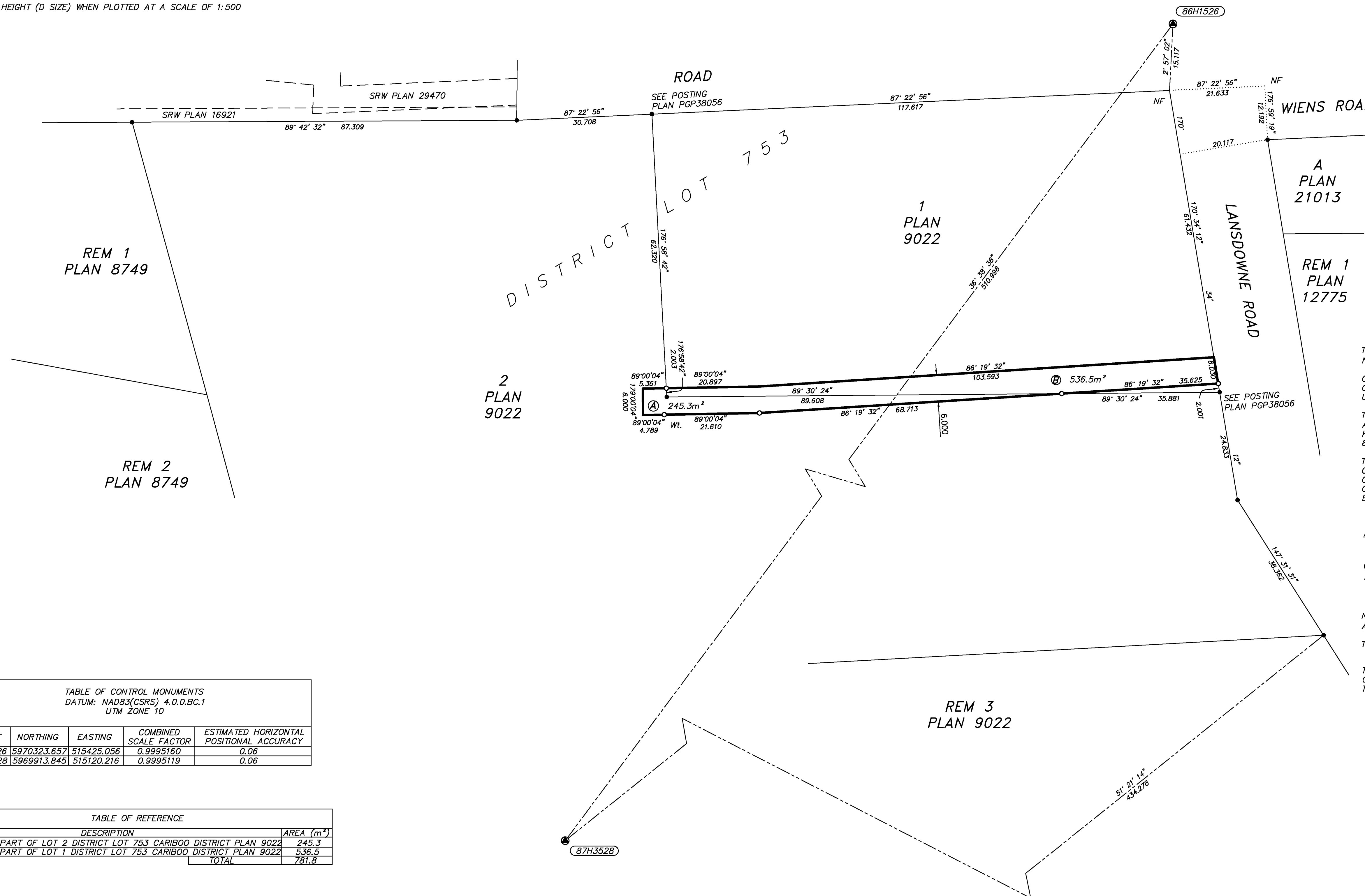


STATUTORY RIGHT OF WAY PLAN
OVER PART OF
LOTS 1 AND 2 DISTRICT LOT 753
CARIBOO DISTRICT PLAN 9022
PURSUANT TO SECTION 113 OF THE LAND TITLE ACT

BCGS 93G.087



THE INTENDED PLOT SIZE OF THIS PLAN IS 864mm IN WIDTH BY 560mm IN HEIGHT (D SIZE) WHEN PLOTTED AT A SCALE OF 1:500



THIS PLAN LIES WITHIN INTEGRATED SURVEY AREA NO. 39 PRINCE GEORGE NAD83(CSRS) 4.0.0.BC.1

GRID BEARINGS ARE DERIVED FROM OBSERVATIONS BETWEEN GEODETIC CONTROL MONUMENTS AND ARE REFERRED TO THE CENTRAL MERIDIAN OF UTM ZONE 10.

THE UTM COORDINATES AND ESTIMATED ABSOLUTE ACCURACY ACHIEVED ARE DERIVED FROM MASCOT PUBLISHED COORDINATES AND REAL-TIME KINEMATIC GNSS OBSERVATIONS TO GEODETIC CONTROL MONUMENTS 86H1526 AND 87H3528.

THIS PLAN SHOWS HORIZONTAL GROUND LEVEL DISTANCES, UNLESS OTHERWISE SPECIFIED. TO COMPUTE GRID DISTANCES, MULTIPLY GROUND LEVEL DISTANCES BY THE AVERAGE COMBINED FACTOR OF 0.9995127. THE AVERAGE COMBINED FACTOR HAS BEEN DETERMINED BASED ON PUBLISHED CONTROL MONUMENT 86H1526.

LEGEND

-STANDARD IRON POST FOUND
-STANDARD IRON POST PLACED
- ⊙.....GEODETIC CONTROL MONUMENT
- NF.....DENOTES NOTHING FOUND
- Wt.....DENOTES WITNESS

NOTE: THIS PLAN SHOWS ONE OR MORE WITNESS POSTS WHICH ARE NOT SET ON THE TRUE CORNER(S).

THIS PLAN LIES WITHIN THE FRASER-FORT GEORGE REGIONAL DISTRICT.

THE FIELD SURVEY REPRESENTED BY THIS PLAN WAS COMPLETED ON THE 21st DAY OF DECEMBER, 2019 TIMOTHY ERICKSON, BCLS #1007

POINT	NORTHING	EASTING	COMBINED SCALE FACTOR	ESTIMATED HORIZONTAL POSITIONAL ACCURACY
86H1526	5970323.657	515425.056	0.9995160	0.06
87H3528	5969913.845	515120.216	0.9995119	0.06

AREA	DESCRIPTION	AREA (m ²)
A	PART OF LOT 2 DISTRICT LOT 753 CARIBOO DISTRICT PLAN 9022	245.3
B	PART OF LOT 1 DISTRICT LOT 753 CARIBOO DISTRICT PLAN 9022	536.5
	TOTAL	781.8

Allnorth
Land Surveyors
#301-7 ST. PAUL STREET WEST,
KAMLOOPS, BC, V2C 1E9
TEL: 250-374-5331 FAX: 250-374-5332
DRAWN BY: TE
DRAWING NO: 19LS0008-BG133.dwg
FILE NO: 19LS0008-BG133
FB: LL P: --