

Reference Plan of:
1: Lots 5 & 6, Block 227, District Lot 343, Cariboo District, Plan 1268;
2: Closed Lane in Block 227, District Lot 343, Plan 1268 as shown on Plan EPP97638

PURSUANT TO SECTION 100(1)(b) OF THE LAND TITLE ACT.

Integrated survey area No. 39 Prince George, BC,
 NAD83 (CSRS) 4.0.0.BC.1

BCGS 93G.097



The intended plot size of this plan is 864mm in width by 559mm in height (D size) when plotted at a scale of 1:400.

All distances are in metres and decimals thereof.

Grid bearings are derived from observations between geodetic control monuments 85H1086 and 85H1077.

The UTM coordinates and estimated absolute accuracy achieved have been derived from masco published coordinates and standard deviations for geodetic control monuments 85H1086 and 85H1077.

This plan shows horizontal ground-level distances unless otherwise specified. To compute grid distances, multiply ground-level distances by the average combined factor of 0.9995155 which has been derived from control monument 85H1086.

Note:
 This plan shows one or more witness posts which are not set on the true corner(s).

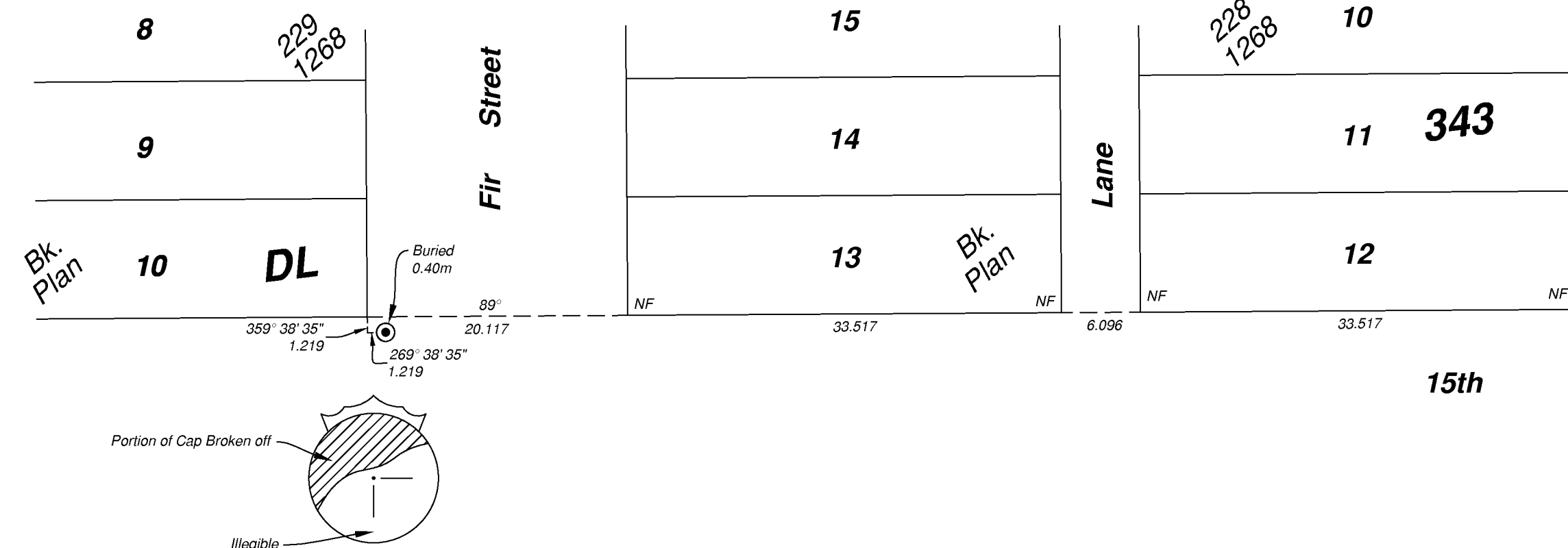
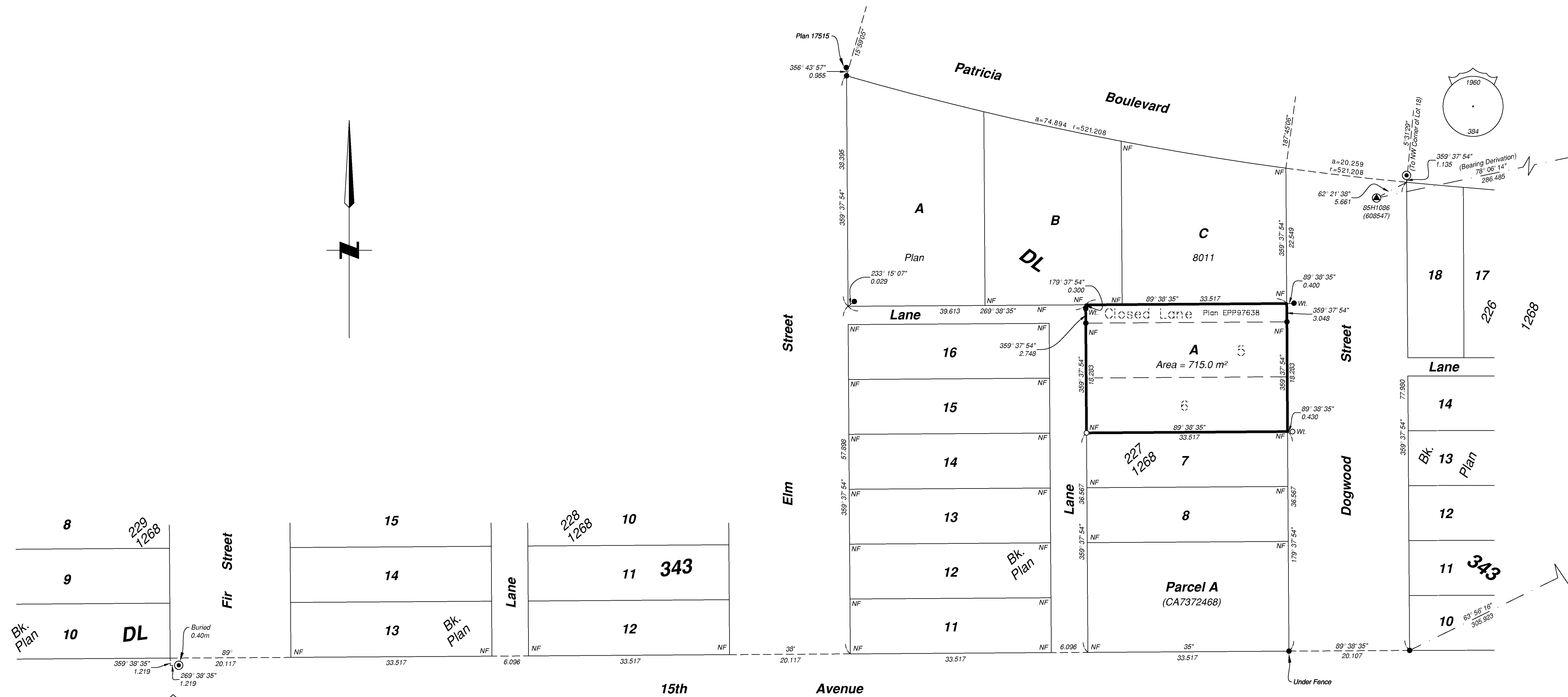
Some posts are exaggerated for clarity.

Guard stakes are set at every post set unless otherwise noted.

Legend

- | Symbols | Description |
|------------------------|-----------------------------|
| Found | Placed |
| Control Monument | Standard Iron Post |
| Standard Concrete Post | Combined Scale Factor |
| CSF | Estimated Absolute Accuracy |
| EAA | Block |
| Bk. | |

Georeferencing Positions				
UTM Coordinates, Zone 10, NAD 83 (CSRS), 4.0.0.BC.1				
Station	Northing	Easting	EAA	CSF
85H1086	5973679.87	517494.41	0.10	0.9995155
85H1077	5973738.90	517774.61	0.10	0.9995157



The field survey represented by this plan was completed on the 23rd day of October, 2019
 Albert Koehler, BCLS 974
 This plan lies within the Regional District of Fraser-Fort George

File: 19093-CONS
KOEHLER LAND SURVEYING INC.
 1698 Lyon Street South
 Prince George, BC V2N 1T3
 Tel: (250) 614-9703