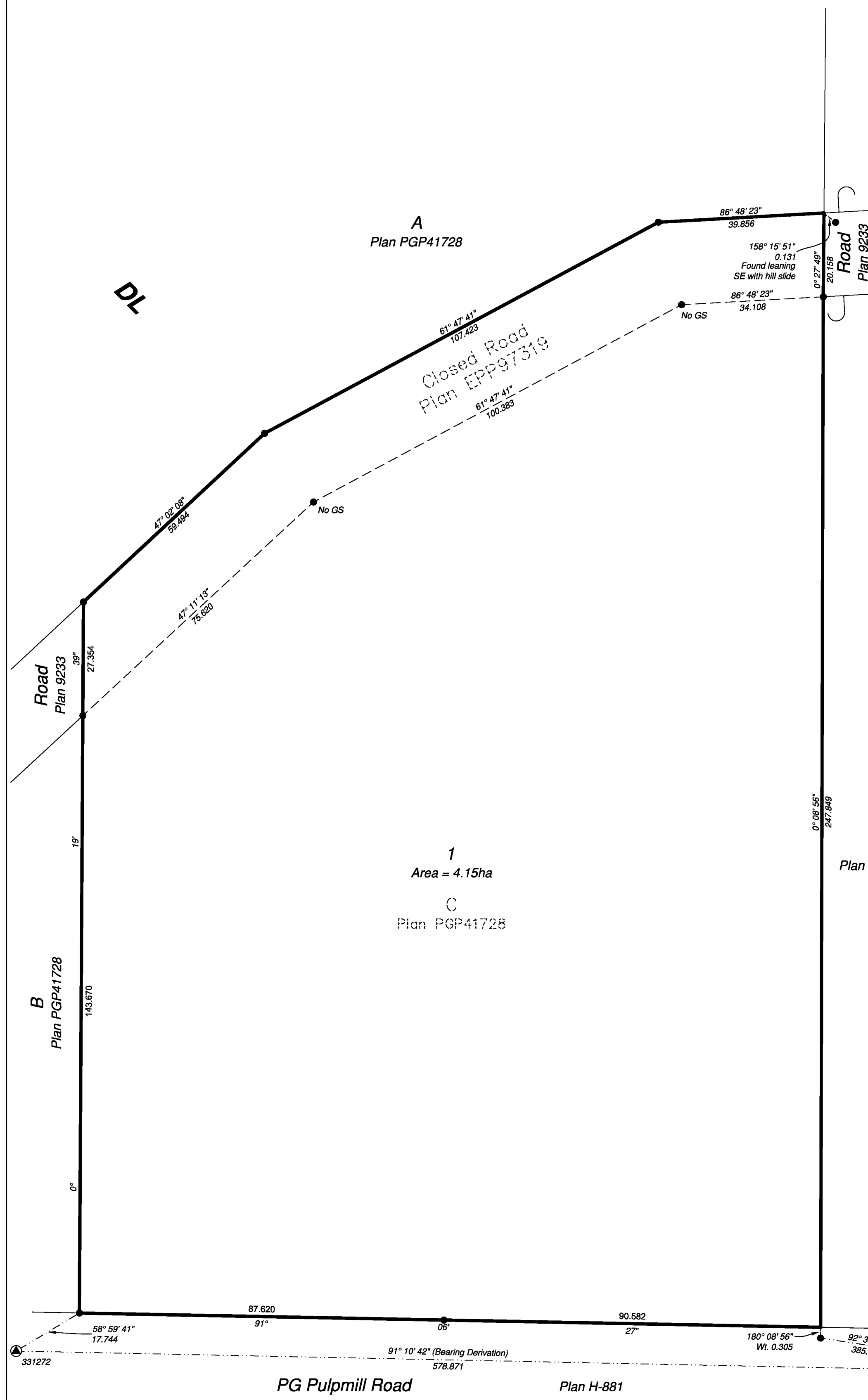


**PLAN EPP97320**



**Reference Plan of Lot C, District Lot 823, Cariboo District, Plan PGP41728 and that part of Closed Road in District Lot 823, Cariboo District, as shown on Plan EPP97319.**

Pursuant to Section 100(1)(b) of the Land Title Act.  
Integrated survey area No. 39 Prince George, BC,  
NAD83 (CSRS) 4.0.0.BC.1  
BCGS 93G.097



The intended plot size of this plan is 432mm in width by 559mm in height (C size) when plotted at a scale of 1:750.

All distances are in metres and decimals thereof.

Grid bearings are derived from observations between geodetic control monuments 331272 and 167767.

The UTM coordinates and estimated absolute accuracy achieved are derived from mascot published coordinates and standard deviations for geodetic control monuments 331272 and 167767.

This plan shows horizontal ground-level distances unless otherwise specified. To compute grid distances, multiply ground-level distances by the average combined factor of 0.9995164 which has been derived from control monument 331272.

Note:  
This plan shows one or more witness posts which are not set on the true corner(s).

Some posts are exaggerated for clarity.  
Wooden guard stakes found at every IP except where noted.

**Legend**

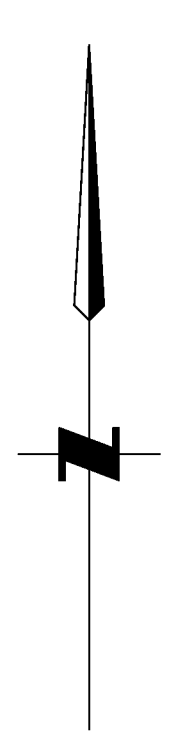
Symbols	Description
Found	
	Control Monument
	Standard Iron Post
	Wooden Guard Stake
CSF	Combined Scale Factor
EAA	Estimated Absolute Accuracy

**A**  
Plan BCP9130

**1**  
Area = 4.15ha  
**C**  
Plan PGP41728

Georeferencing Positions				
UTM Coordinates, Zone 10, NAD 83 (CSRS), 4.0.0.BC.1				
Station	Northing	Easting	EAA	CSF
331272	5975733.74	517364.08	0.10	0.9995164
167767	5975721.84	517942.54	0.10	0.9995168

**823**



**PG Pulpmill Road**

Plan H-881

The field survey represented by this plan was completed on the 2nd day of October, 2019.

Scott Maguire, BCLS 903

This plan lies within the Regional District of Fraser-Fort George

File: 19114-CON

**KOEHLER LAND SURVEYING INC.**  
1698 Lyon Street South  
Prince George, BC V2N 1T3  
Tel: (250) 614-9703