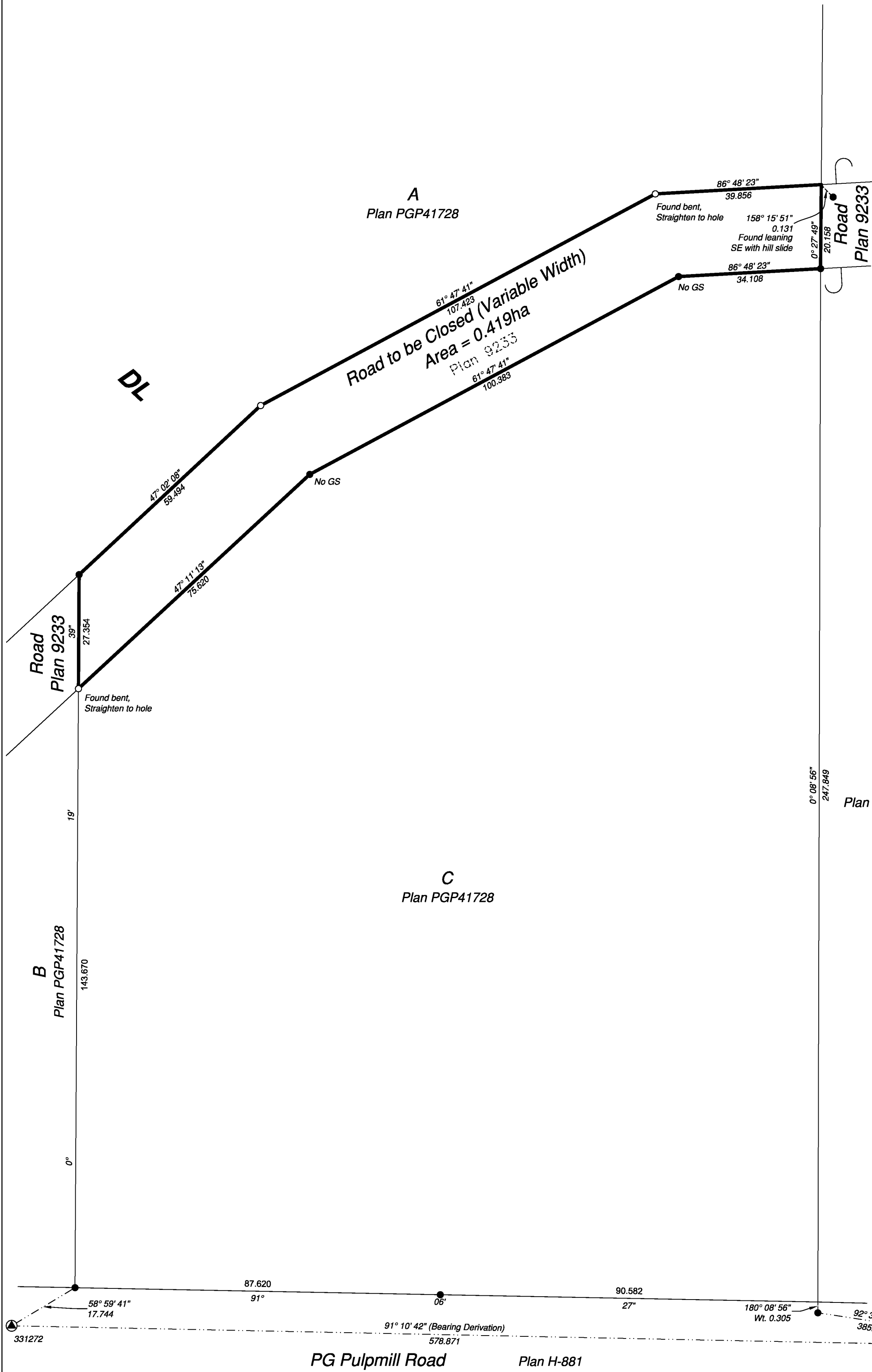


PLAN EPP97319



Reference Plan to Accompany By-law No. 9069 (City of Prince George) to close a portion of Road shown dedicated on Plan 9233, District Lot 823, Cariboo District.

Pursuant to Section 120 of the Land Title Act and Section 40 of the Community Charter.
 Integrated survey area No. 39 Prince George, BC,
 NAD83 (CSRS) 4.0.0.BC.1
 BCGS 93G.097



The intended plot size of this plan is 432mm in width by 559mm in height (C size) when plotted at a scale of 1:750.

All distances are in metres and decimals thereof.

Grid bearings are derived from observations between geodetic control monuments 331272 and 167767.

The UTM coordinates and estimated absolute accuracy achieved are derived from mascot published coordinates and standard deviations for geodetic control monuments 331272 and 167767.

This plan shows horizontal ground-level distances unless otherwise specified. To compute grid distances, multiply ground-level distances by the average combined factor of 0.9995164 which has been derived from control monument 331272.

Note:
 This plan shows one or more witness posts which are not set on the true corner(s).

Some posts are exaggerated for clarity.

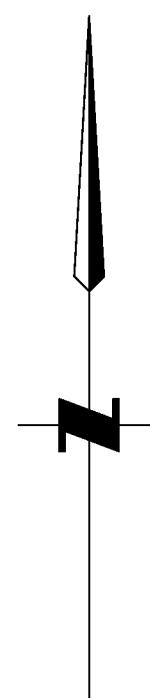
Wooden guard stakes were placed at all IP's on this plan unless otherwise noted.

Legend

Symbols	Description
Found Placed	
Control Monument	Control Monument
Standard Iron Post	Standard Iron Post
Wooden Guard Stakes	Wooden Guard Stakes
Combined Scale Factor	Combined Scale Factor
Estimated Absolute Accuracy	Estimated Absolute Accuracy

A
 Plan BCP9130

Georeferencing Positions				
UTM Coordinates, Zone 10, NAD 83 (CSRS), 4.0.0.BC.1				
Station	Northing	Easting	EAHA	CSF
331272	5975733.74	517364.08	0.10	0.9995164
167767	5975721.84	517942.54	0.10	0.9995168



823

The field survey represented by this plan was completed on the 2nd day of October, 2019.

Scott Maguire, BCLS 903

This plan lies within the Regional District of Fraser-Fort George

File: 19114-RC

KOEHLER LAND SURVEYING INC.
 1698 Lyon Street South
 Prince George, BC V2N 1T3
 Tel: (250) 614-9703