

**PLAN EPP97268**

CORRECTED THIS 2ND DAY OF FEBRUARY, 2021. SEE CA8749733.

L. BLASCHUCK/RR

*Rem. DL 2014*

**STATUTORY RIGHT OF WAY PLAN  
OVER PART OF DISTRICT LOT 2014,  
CARIBOO DISTRICT, EXCEPT PLANS  
29514, EPP5390, EPP16518, EPP53901,  
AND EPP96993**

PURSUANT TO SECTION 113 OF THE LAND TITLE ACT.

Integrated survey area No. 39 Prince George, BC,  
NAD83 (CSRS) 4.0.0.BC.1

BCGS 93G.087



The intended plot size of this plan is 280mm in width by 432mm in height (B size) when plotted at a scale of 1:400.

All distances are in metres and decimals thereof.

Grid bearings are derived from Plan EPP96993 and are referred to the central meridian of UTM Zone 10 (123° West Longitude)

The UTM coordinates and estimated absolute accuracy achieved have been derived from ties to found iron posts set on Plan EPP96993.

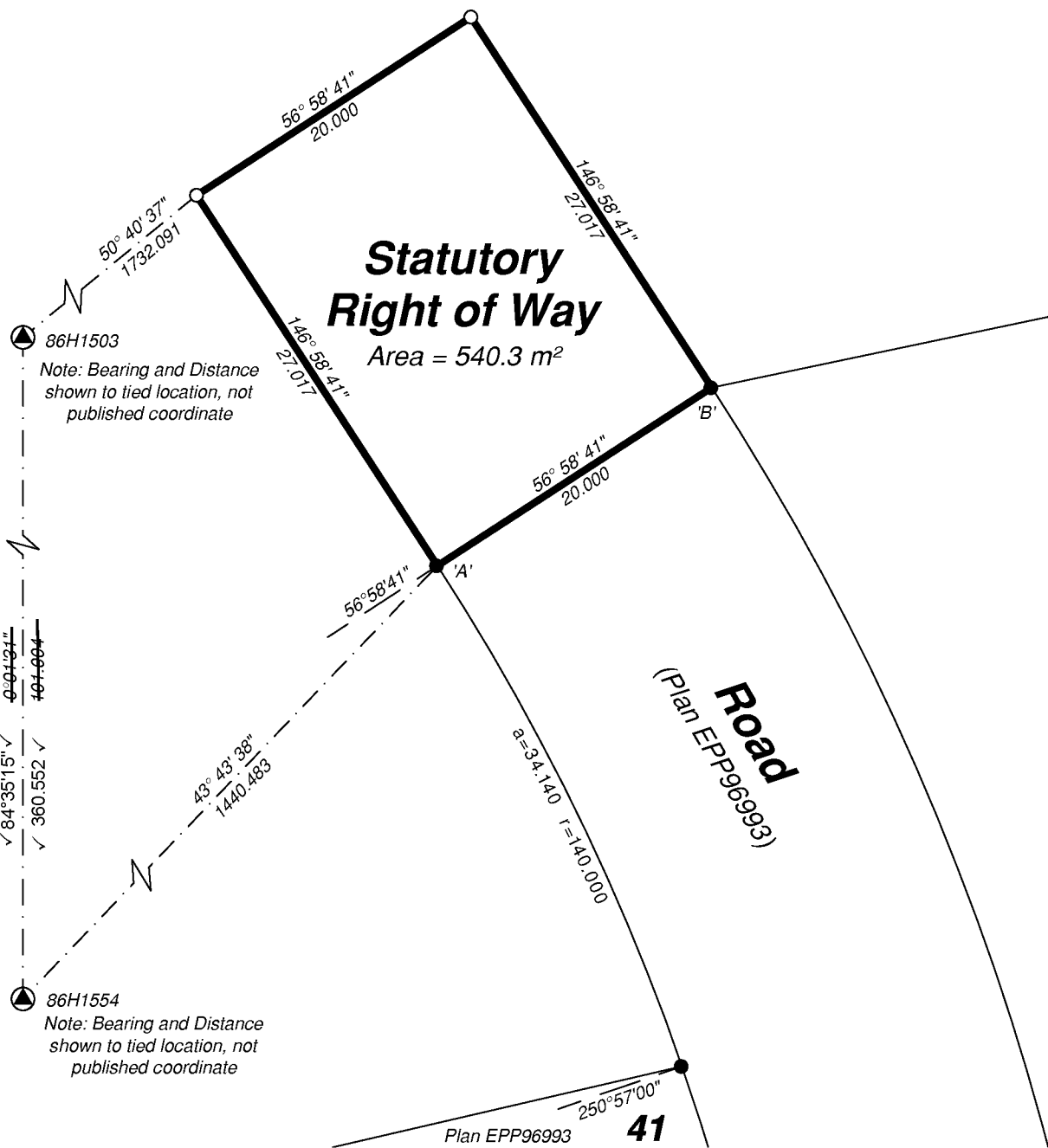
This plan shows horizontal ground-level distances unless otherwise specified. To compute grid distances, multiply ground-level distances by the average combined factor of 0.999516 which has been derived from found iron post 'A', placed on Plan EPP96993.

Inspected under the Land Title Act on 25 day of June, 2020

The field survey represented by this plan was completed on the 26th day of September, 2019

Albert Koehler, BCLS 974

This plan lies within the Regional District of Fraser-Fort George



**49**  
Plan EPP96993

**Legend**

| Symbols |        | Description                 |
|---------|--------|-----------------------------|
| Found   | Placed |                             |
| ▲       |        | Control Monument            |
| ●       | ○      | Standard Iron Post          |
| CSF     |        | Combined Scale Factor       |
| EAA     |        | Estimated Absolute Accuracy |

| Georeferencing Positions                        |            |           |      |          |
|---|------------|-----------|------|----------|
| UTM Coordinates, Zone 10, NAD 83 (CSRS), 2002.0 |            |           |      |          |
| Station   | Northing   | Easting   | EAA  | CSF      |
| A   | 5967805.23 | 516462.19 | 0.05 | 0.999516 |
| B   | 5967816.12 | 516478.95 | 0.05 | 0.999516 |

File: 19097-RW-R1

**KOEHLER LAND SURVEYING INC.**  
1698 Lyon Street South  
Prince George, BC V2N 1T3  
Tel: (250) 614-9703