

**PLAN EPP95918**

**SUBDIVISION PLAN OF LOT 7,  
DISTRICT LOT 2424, CARIBOO  
DISTRICT, PLAN 10628, EXCEPT  
PLAN 21005**

Integrated survey area No. 39 Prince George, BC,  
NAD83 (CSRS) 4.0.0.BC.1

BCGS 93J.006



The intended plot size of this plan is 280mm in width by 432mm in height (C size) when plotted at a scale of 1:750.

All distances are in metres and decimals thereof.

Grid bearings are derived from observations between geodetic control monuments 86H1632 and 86H1643 and are referred to the central meridian of UTM Zone 10.

The UTM coordinates and estimated absolute accuracy achieved have been derived from masco published coordinates and standard deviations for geodetic control monuments 86H1632 and 86H1643.

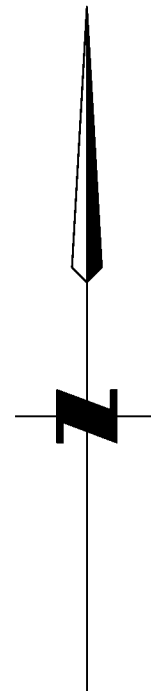
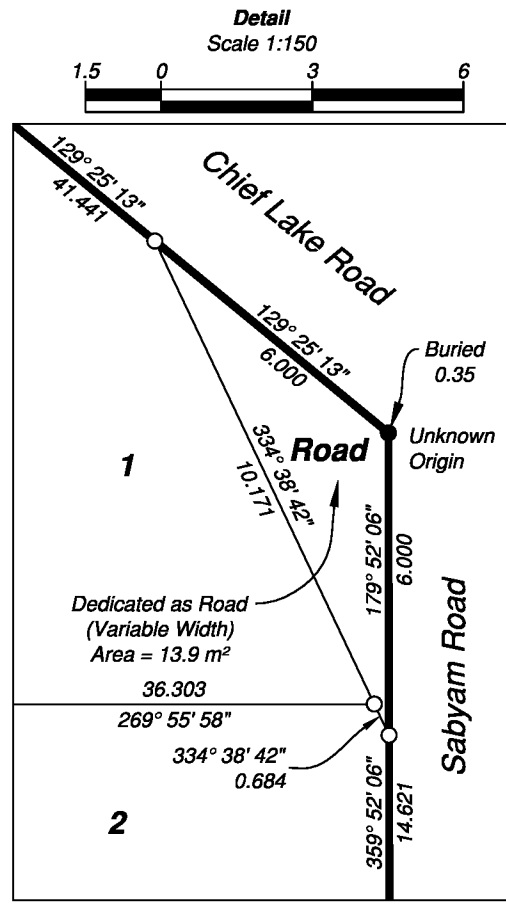
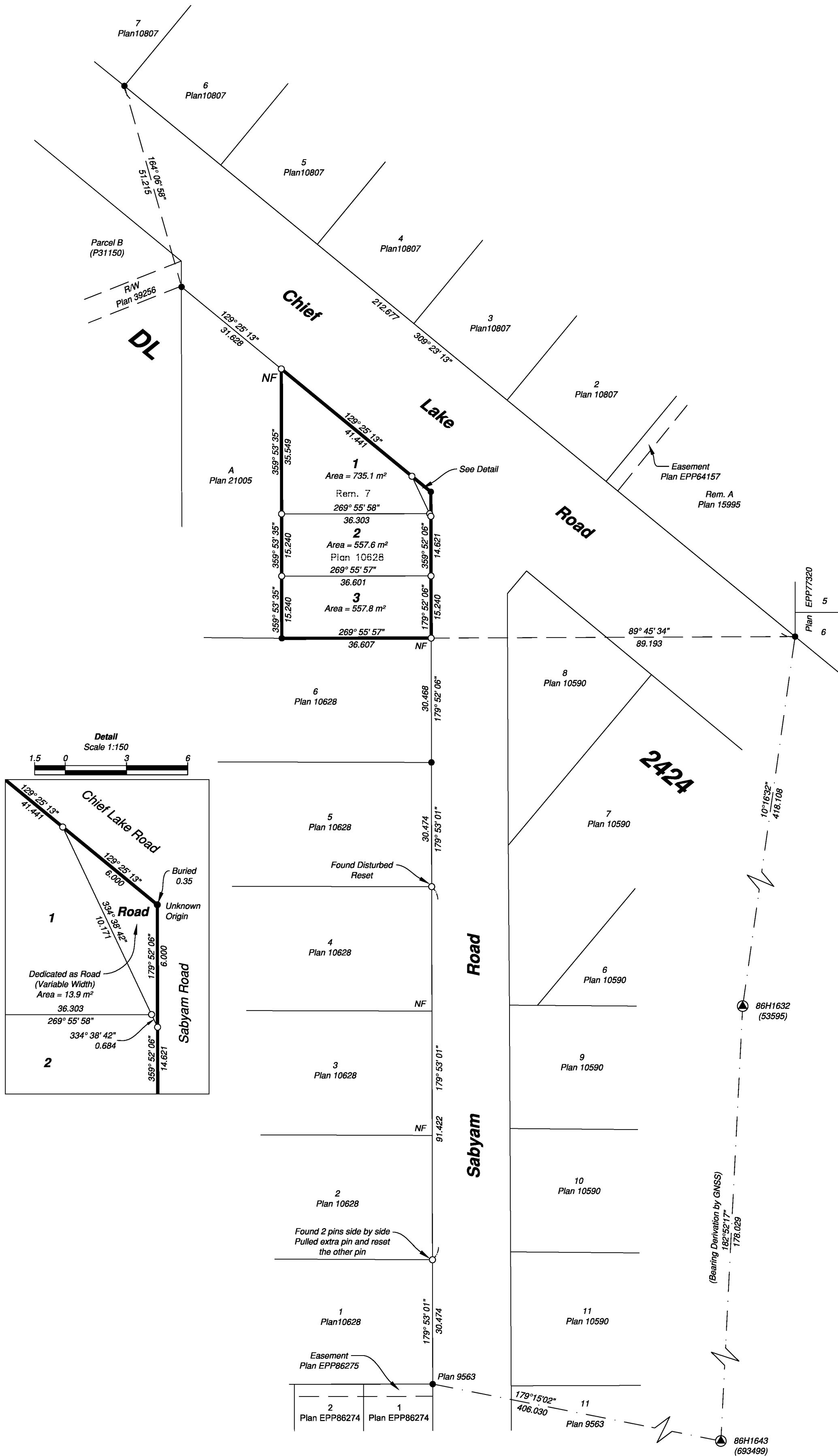
This plan shows horizontal ground-level distances unless otherwise specified. To compute grid distances, multiply ground-level distances by the average combined factor of 0.9994854 which has been derived from control monument 86H1632.

**Legend**

Symbols		Description
Found	Placed	
●	○	Control Monument
○	○	Standard Iron Post
CSF		Combined Scale Factor
EAA		Estimated Absolute Accuracy

Georeferencing Positions UTM Coordinates, Zone 10, NAD 83 (CSRS), 4.0.0.BC.1				
Station	Northing	Easting	EAA	CSF
86H1632	5983690.52	512764.56	0.10	0.9994854
86H1643	5983512.81	512755.64	0.10	0.9994857

Note: Wooden Guard Stakes set at each iron pin unless otherwise noted.



This plan lies within the jurisdiction of the approving officer for the City of Prince George.

CPG File No.: SD100595

The field survey represented by this plan was completed on the 21st day of July, 2019.

Albert Koehler, BCLS 974

This plan lies within the Regional District of Fraser-Fort George

File: 19087-SUBD

**KOEHLER LAND SURVEYING INC.**  
1698 Lyon Street South  
Prince George, BC V2N 1T3  
Tel: (250) 614-9703