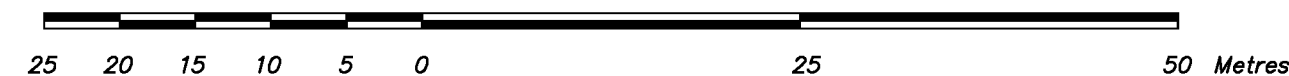


Rem A  
Plan BCP25328

**EXPLANATORY PLAN OF PART OF LOT 1, DISTRICT LOT 8180, CARIBOO DISTRICT, PLAN EPP95708.**

For Covenant Purposes  
Pursuant to Section 99(1)(e), Land Title Act.

**BCGS 93G.087**

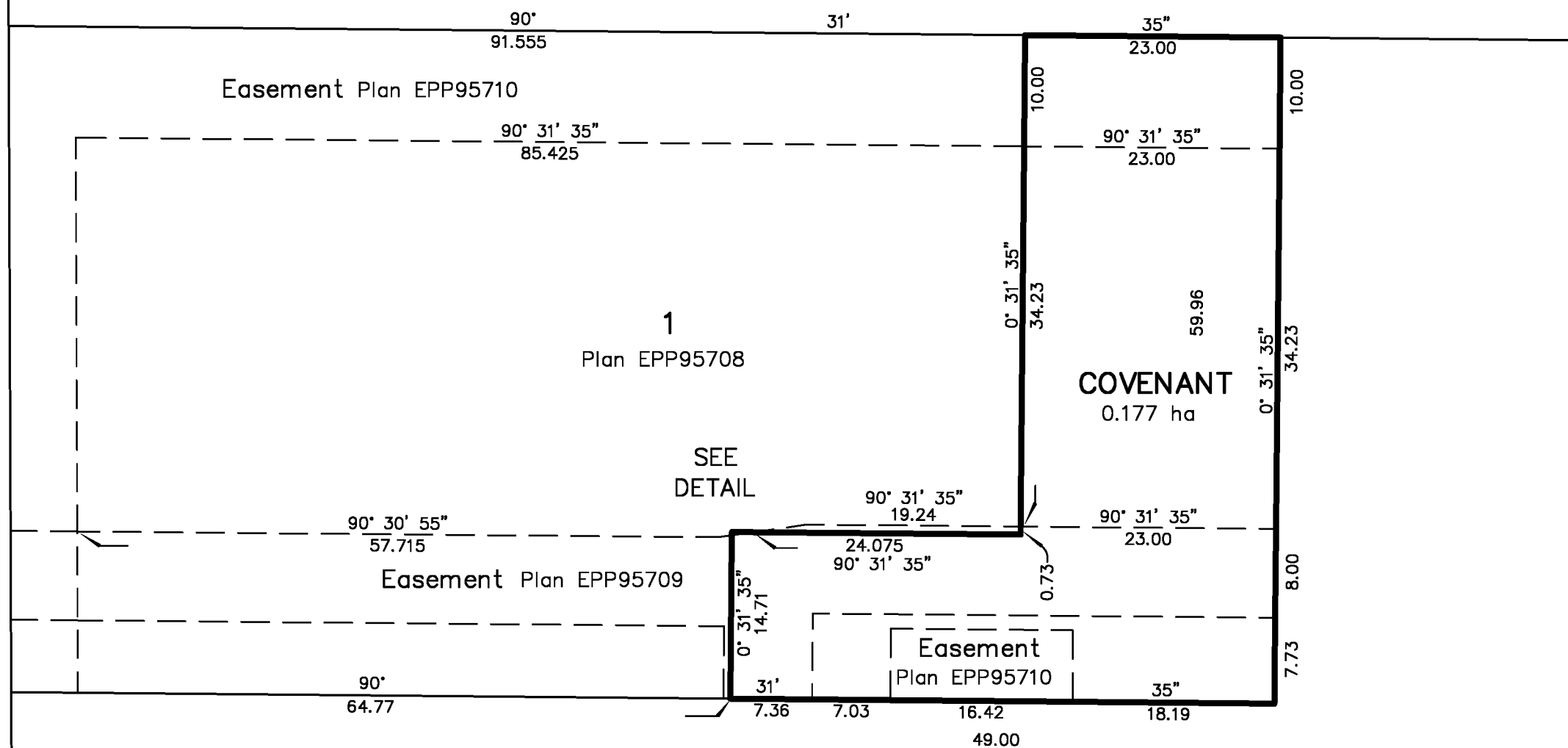


The intended plot size of this plan is 560mm in width by 432mm in height (C Size) when plotted at a scale of 1:500.

This plan lies within Integrated Survey Area No. 39, City of Prince George, NAD83 (CSRS) 4.0.0.BC.1

**LEGEND**

Bearings are grid derived from Plan EPP95708



Rem B  
Plan BCP25328

**D L 8 1 8 0**

This plan lies within the Regional District of Fraser-Fort George.

This plan is based on the following  
Land Title and Survey Authority of BC records:

- Plan EPP95708
- Plan EPP95709
- Plan EPP95710

Veronica Meister, BCLS 967  
19th day of February, 2020

**EXTON AND DODGE**

LAND SURVEYING INC.  
133 BORLAND STREET  
WILLIAMS LAKE, B.C.  
V2G 1R1  
(250) 392-7111

FILE No. 20657 Dwg. 4

Recplace Drive  
Plans BCP25328 and BCP25199