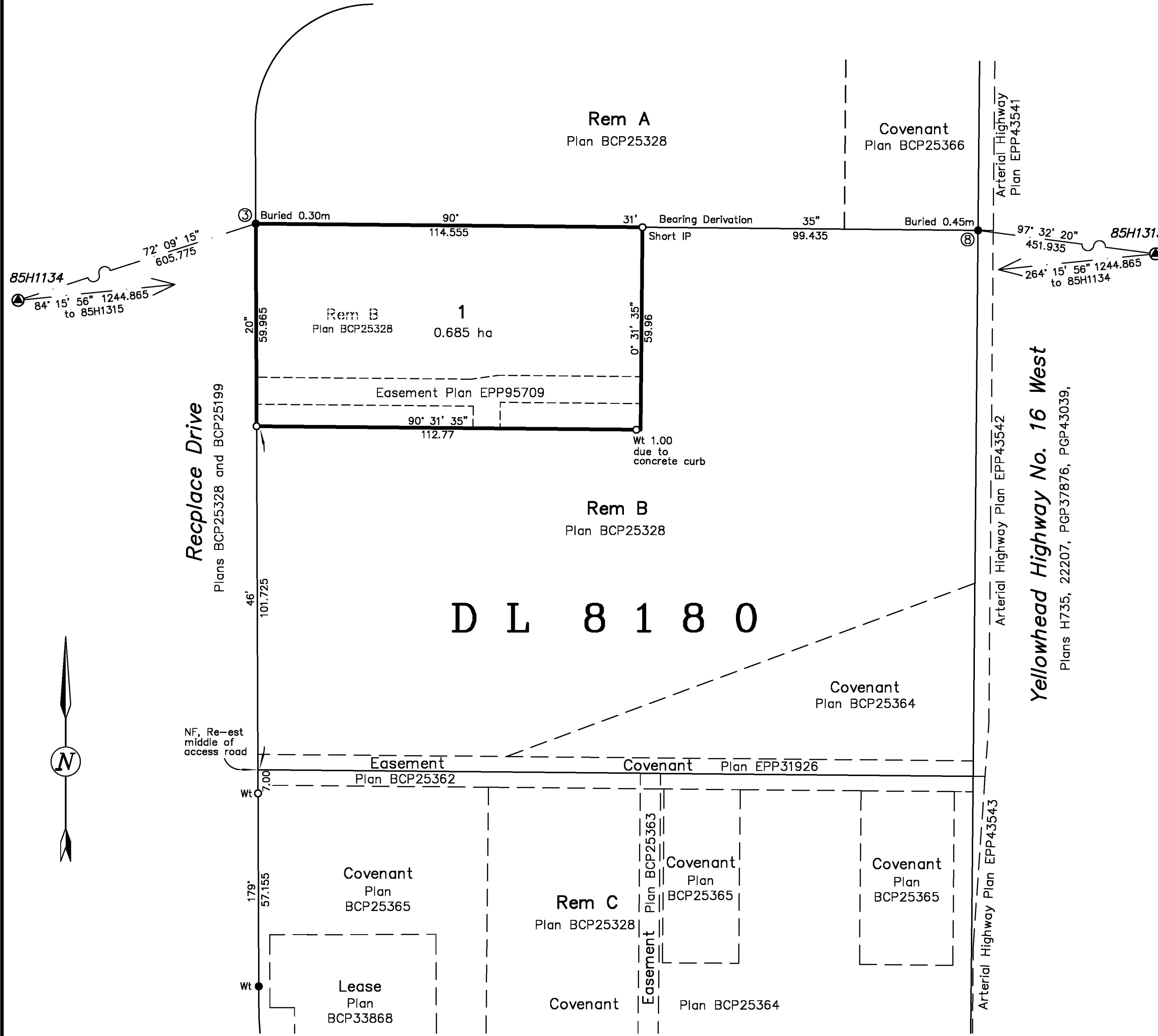


PLAN EPP95708



SUBDIVISION PLAN OF PART OF LOT B, DISTRICT LOT 8180, CARIBOO DISTRICT, PLAN BCP25328, EXCEPT PLAN EPP43542.

Pursuant to Section 67, Land Title Act.
BCGS 93G.087



The intended plot size of this plan is 560mm in width by 432mm in height (C Size) when plotted at a scale of 1:1000.

LEGEND

This plan lies within Integrated Survey Area No. 39, City of Prince George, NADB3 (CSRS) 4.0.0.BC.1

Grid bearings are derived from differential dual frequency GNSS observations and are referred to the central meridian of UTM Zone 10.

The UTM coordinates and estimated absolute accuracy achieved are derived from dual frequency GNSS observations to geodetic control monuments 85H1134 and 85H1315.

This plan shows horizontal ground level distances unless otherwise specified. To compute grid distances, multiply ground level distances by the average combined factor of 0.999513. The average combined factor has been determined based on an ellipsoidal elevation of 576 metres.

- ⊙ Control Monument Found.
- Standard Iron Post Found.
- Standard Iron Post Placed.
- Re-est Re-established.
- NF Nothing Found.

Note: This plan shows one or more witness posts which are not set on the true corner(s).

Concurrent registration of an Easement Plan pursuant to Section 99(1)(e) of the Land Title Act is a condition of approval for subdivision.

This plan lies within the jurisdiction of the Approving Officer for the City of Prince George.

This plan lies within the Regional District of Fraser – Fort George.

The field survey represented by this plan was completed on the 19th day of February, 2020.
Veronica Meister, BCLS 967



NADB3(CSRS)4.0.0.BC.1, UTM Zone 10 Coordinates			
LOCATION	NORTHING	EASTING	ABSOLUTE ACCURACY ACHIEVED
IP 3	5971477.39	515057.07	0.10
IP 8	5971475.43	515270.95	0.10

EXTON AND DODGE
LAND SURVEYING INC.
133 BORLAND STREET
WILLIAMS LAKE, B.C.
V2G 1R1
(250) 392-7111
FILE No. 20657 Dwg. 1