

# REFERENCE PLAN

PLAN EPP95574

Of Lots 1, 2, and 3 Block 35 District Lot 933 Cariboo District Plan 727, Except Plan 28793

Pursuant to Section 100(1)(b) of the Land Title Act.

Integrated Survey Area No. 39 Prince George, BC, NAD83 (CSRS) 4.0.0.BC.1

BCGS 93G.087

SCALE:



The intended plot size of this plan is 560mm in width by 432mm in height (C size) when plotted at a scale of 1:500.

### LEGEND:

Symbols Found	Description
●	Control Monument
○	Standard Iron Post
+	Unmarked measured point
CF	Combined Factor
EAA	Estimated Absolute Accuracy
No.	Number

### NOTES:

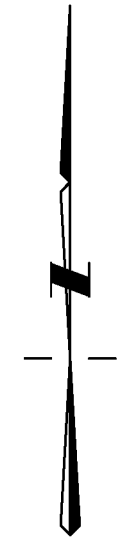
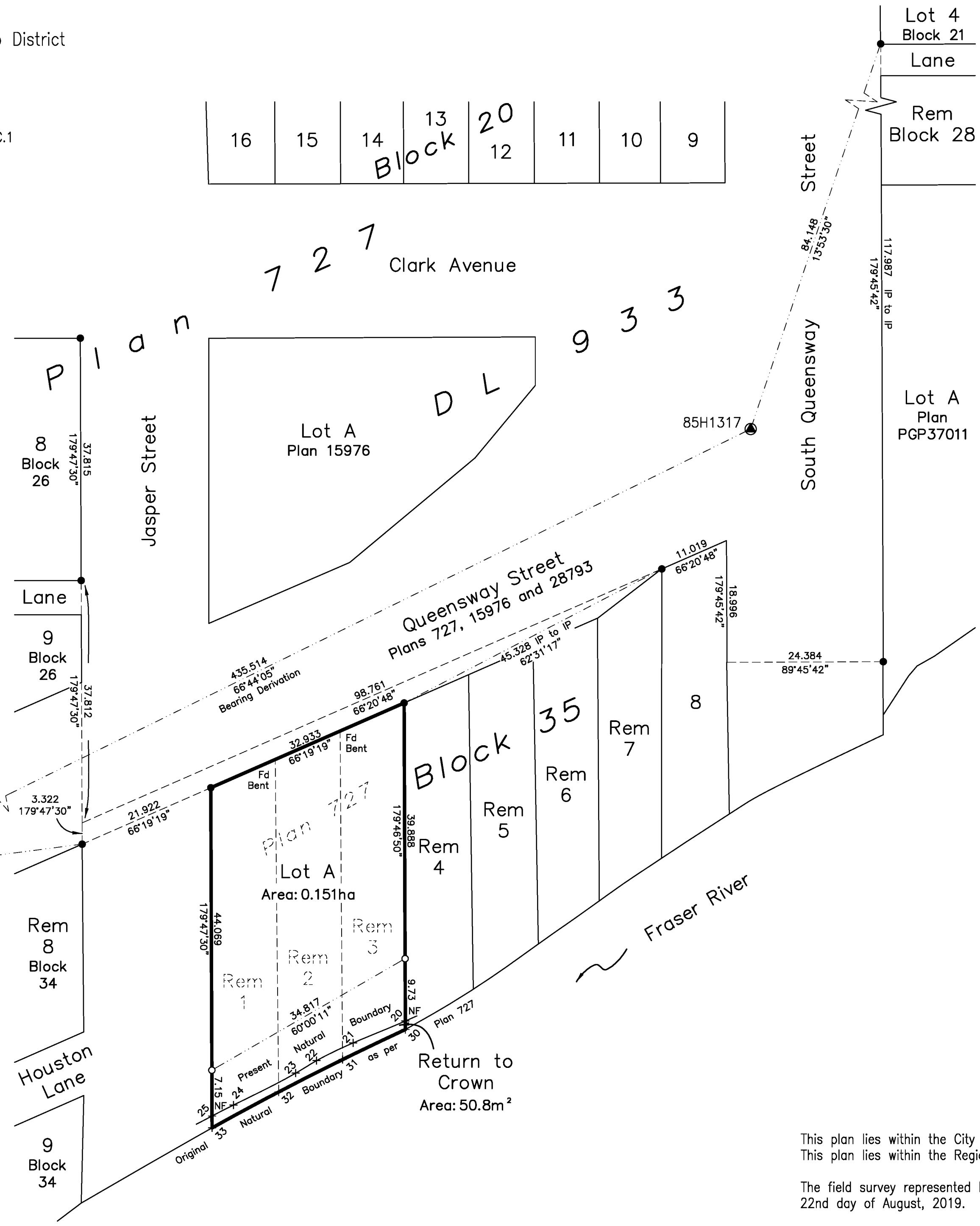
Grid bearings are derived from observations between geodetic control monuments 85H1317 and 85H1343.

The UTM coordinates and estimated horizontal positional accuracy achieved have been derived from MASCOT published coordinates and standard deviations for geodetic control monuments 85H1317 and 85H1343.

This plan shows horizontal ground-level distances, unless otherwise specified. To compute grid distances, multiply ground-level distances by the average combined factor of 0.9995163 which has been derived from control monument 85H1317.

### UTM PUBLISHED COORDINATES:

NAD 83 (CSRS) 4.0.0.BC.1, Zone 10				
Station	Northing	Easting	CF	EAA
85H1317	5971846.27	516989.74	0.999516	0.05
85H1343	5971674.33	516589.84	0.999514	0.05



Fraser River Present Natural Boundary NAD 83 (CSRS) 4.0.0.BC.1, Zone 10		
Point	Northing	Easting
20	5971754.0	516935.9
21	5971750.5	516927.7
22	5971747.8	516922.0
23	5971745.8	516918.8
24	5971740.9	516909.1
25	5971739.1	516905.7

Fraser River Original Natural Boundary NAD 83 (CSRS) 4.0.0.BC.1, Zone 10		
Point	Northing	Easting
30	5971752.6	516935.9
31	5971747.9	516926.1
32	5971742.9	516916.1
33	5971737.3	516905.7

This plan lies within the City of Prince George.  
This plan lies within the Regional District of Fraser-Fort George.

The field survey represented by this plan was completed on the 22nd day of August, 2019.

Gina MP Hidber, BCLS 871

**HBH** LAND SURVEYING INC.  
 Prince George: 203-1300 1st Ave. Prince George, BC V2L 2Y3 250.640.2287  
 Smithers: 3750 1st Ave. PO Box 536 Smithers, BC V0J 2N0 250.847.3808  
[www.HBHLandSurveying.com](http://www.HBHLandSurveying.com)

HBH File No. LUN1901