

EXPLANATORY PLAN

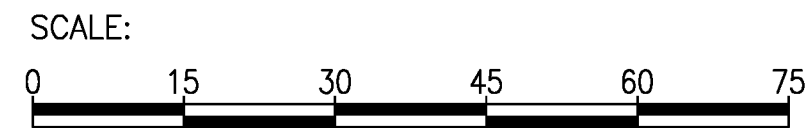
Over Part Of Lot B District Lot 8180 Cariboo
District Plan EPP96883

Pursuant to Section 99(1)(e) of the Land Title Act.

FOR COVENANT PURPOSES

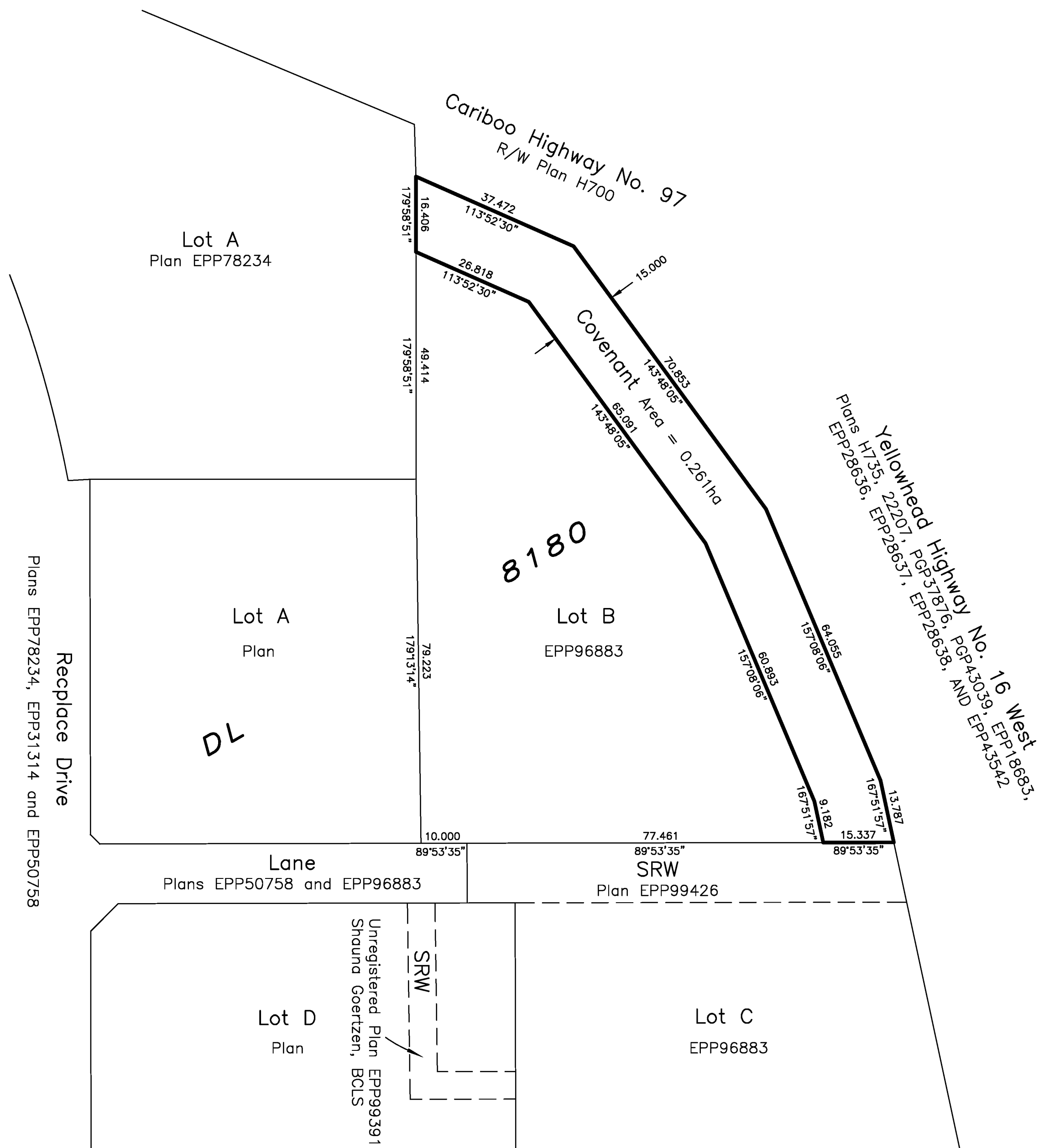
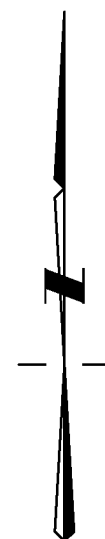
BCGS 93G.087

This plan lies within Integrated Survey Area No. 39,
Prince George, BC, NAD83 (CSRS) 4.0.0.BC.1



The intended plot size of this plan is 560mm in width by
432mm in height (C size) when plotted at a scale of 1:750.

LEGEND:
Distances shown are horizontal ground-level distances in metres
and decimals thereof and are derived from Plan EPP96883.
Bearings are grid and are derived from Plan EPP96883.



This plan is based on the following Land Title and Survey
Authority of BC records:
Plan EPP96883

Darren Kent, BCLS 904
17th day of April, 2020

This plan lies within the Regional District of Fraser-Fort George.



Prince George Smithers
203-1300 1st Ave. 3750 1st Ave. PO Box 536
Prince George, BC V2L 2Y3 Smithers, BC V0J 2N0
250.640.2287 250.847.3808

www.HBHLandSurveying.com

HBH File No. CPG1902-COV