

SUBDIVISION PLAN

PLAN EPP95567

Of Part of Lot 1 District Lot 748
Cariboo District Plan EPP60445 Except
Plan EPP99266

Pursuant to Section 67 of the Land Title Act.

Integrated Survey Area No. 39 Prince George, BC,
NAD83 (CSRS) 4.0.0.BC.1

BCGS 93G.087

SCALE:



The intended plot size of this plan is 560mm in height by
432mm in width (C size) when plotted at a scale of 1:2000.

Grid bearings are derived from observations between geodetic
control monuments 86H1758 and 86H1724 and are referred to
the central meridian of UTM Zone 10 North.

The UTM coordinates and estimated absolute accuracy
achieved are derived from the MASCOT published coordinates
and standard deviations for geodetic control monuments
86H1758 and 86H1724.

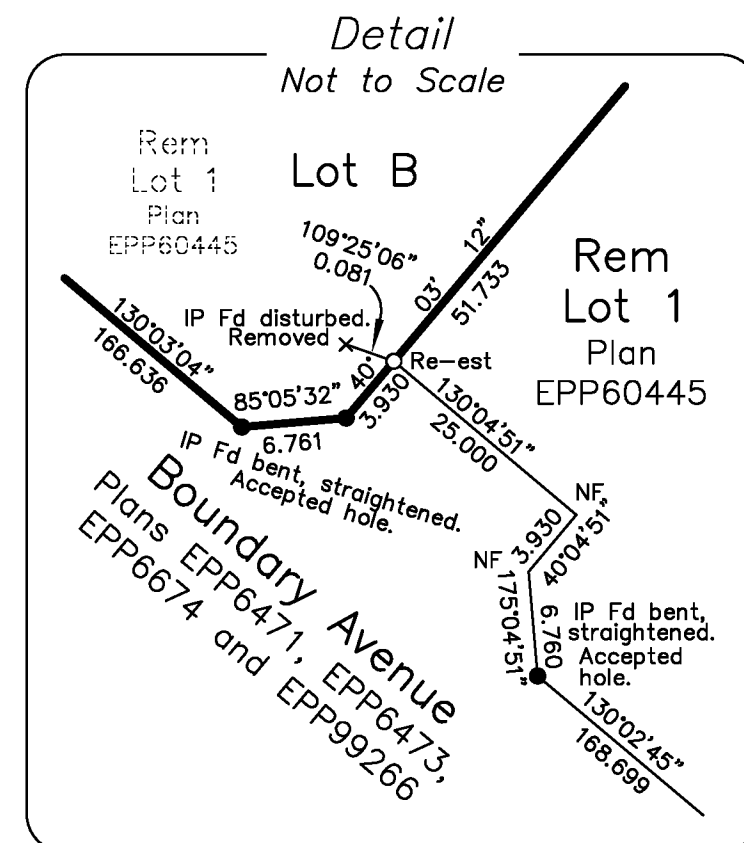
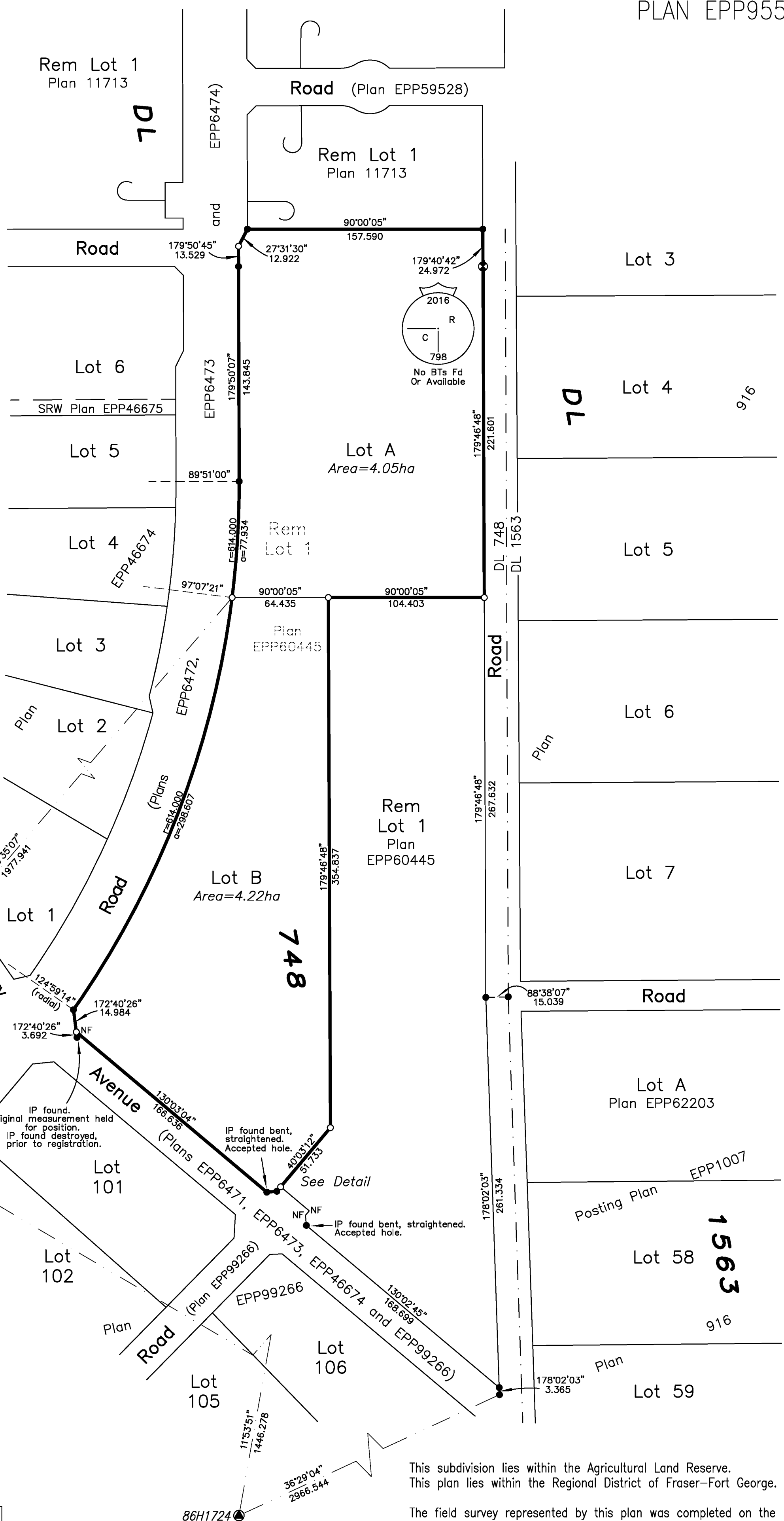
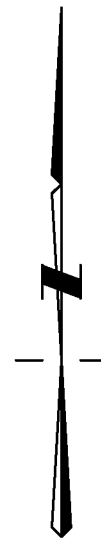
This plan shows horizontal ground-level distances, unless
otherwise specified. To compute grid distances, multiply
ground-level distances by the average combined factor of
0.9995011. The average combined factor has been
determined based on an ellipsoidal elevation of 657 metres.

LEGEND:

Symbols		Description
Found	Placed	
●	○	Standard Iron Post
⊙	○	Standard Capped Post
⊙	○	Control Monument
⊙	○	EAA
BT		Bearing Tree
Re-est		Re-established
x		Unmarked Measured Point

UTM Zone 10 Coordinates (Published)			
NAD83 (CSRS) 4.0.0.BC.1			
Station	Northing	Easting	EAA
86H1758	5966584.06	517870.59	0.13
86H1724	5965169.56	517572.57	0.15

This plan lies within the jurisdiction of the
Approving Officer for the City of Prince George.
File No. SD100615.



This subdivision lies within the Agricultural Land Reserve.
This plan lies within the Regional District of Fraser-Fort George.

The field survey represented by this plan was completed on the
12th day of May, 2021.

Darren Kent, BCLS 904

HBH
LAND SURVEYING INC.

Prince George
203-1300 1st Ave.
Prince George, BC V2L 2Y3
250.640.2287

Smithers
3750 1st Ave. PO Box 536
Smithers, BC V0J 2N0
250.847.3808

www.HBHLandSurveying.com